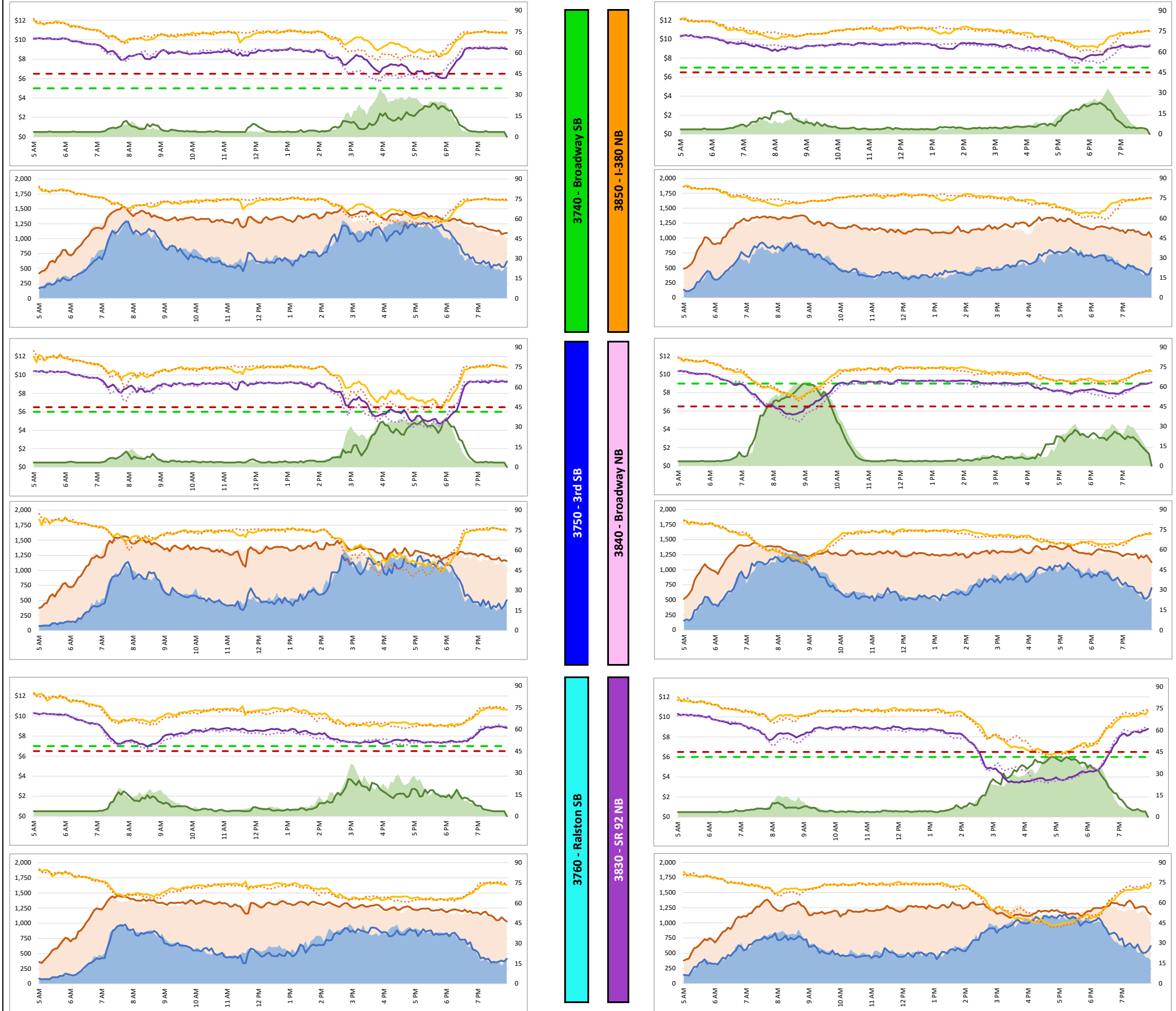
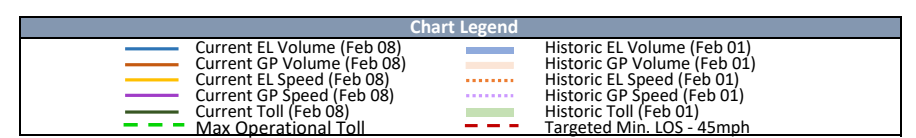
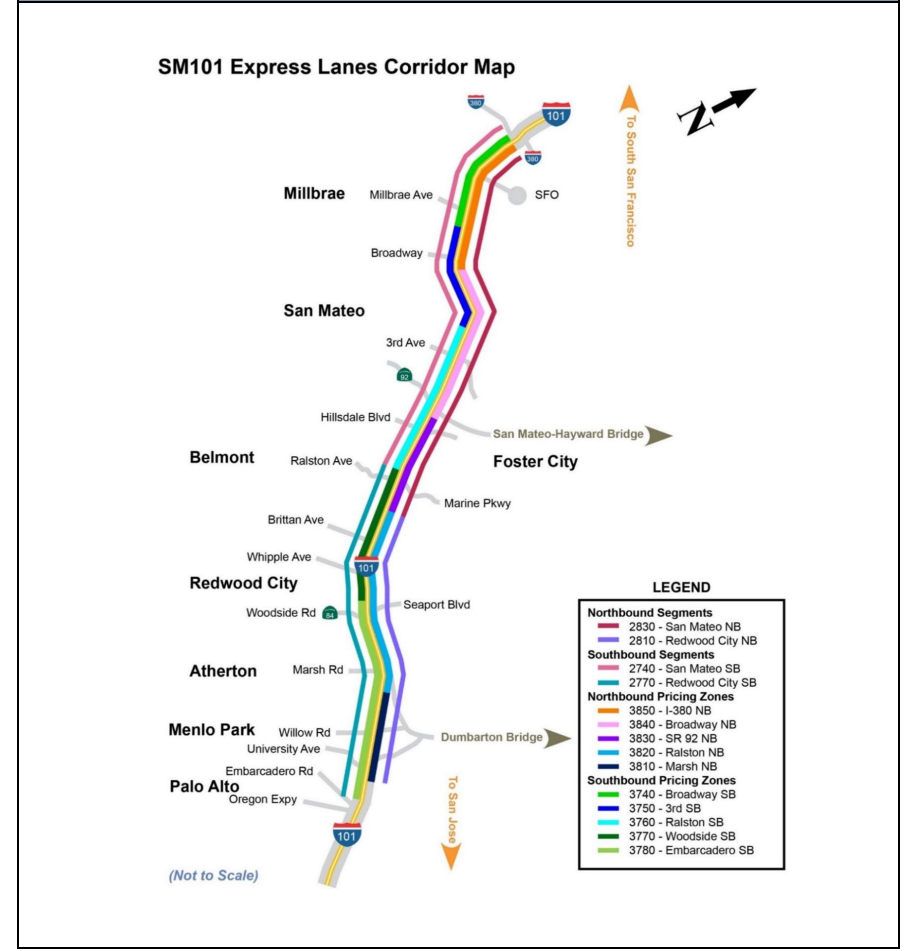


1. Lane Performance

Average Speeds, Volumes & Tolls - Current (Week of 9/16 - 9/20) vs Historic (Week of 9/9 - 9/13)

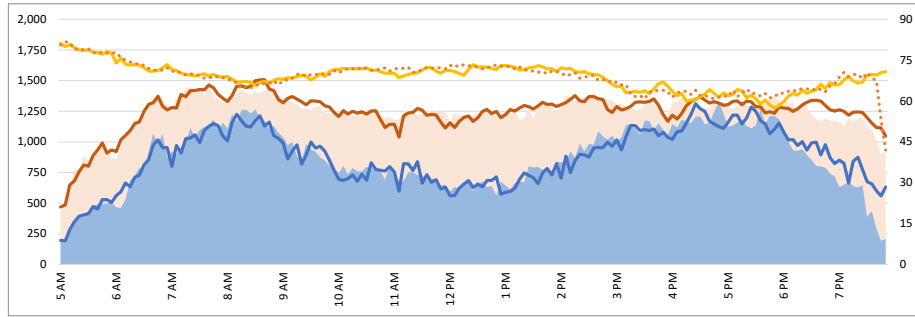
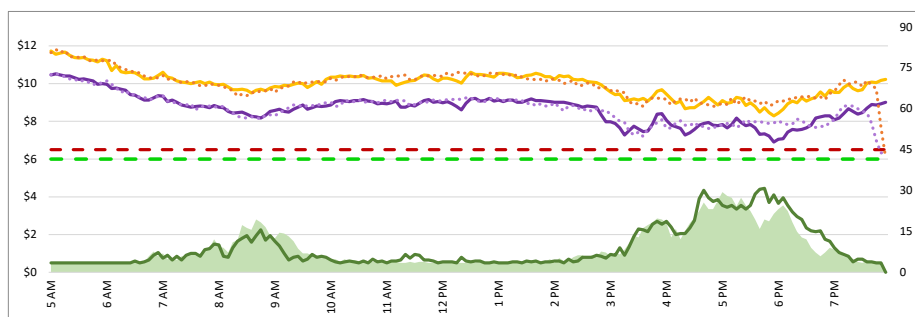
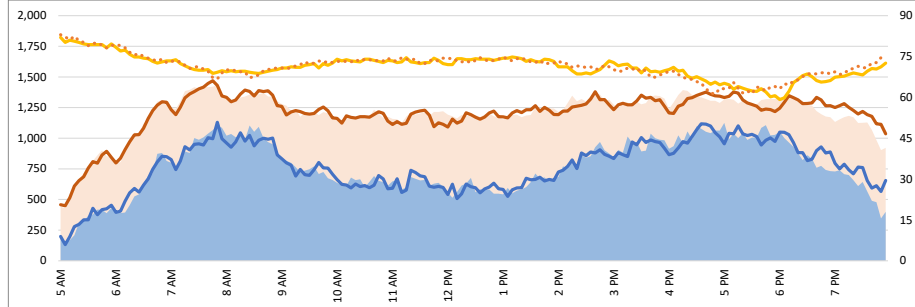
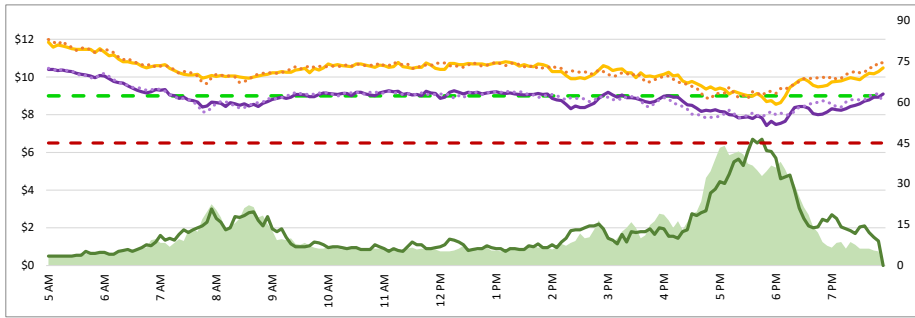
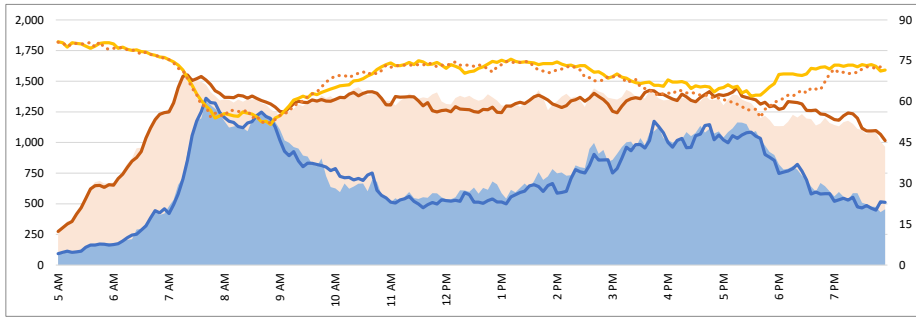
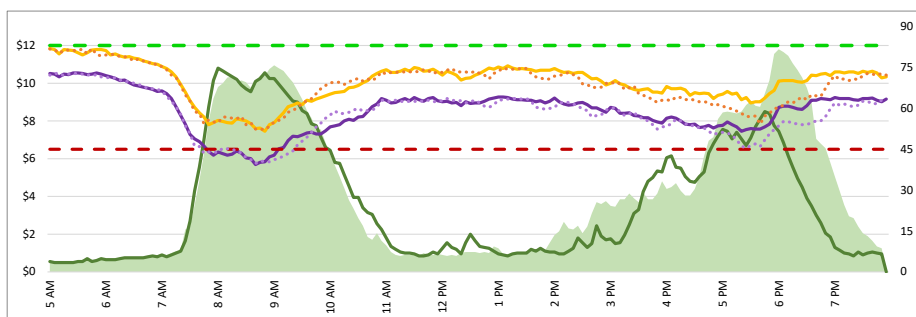
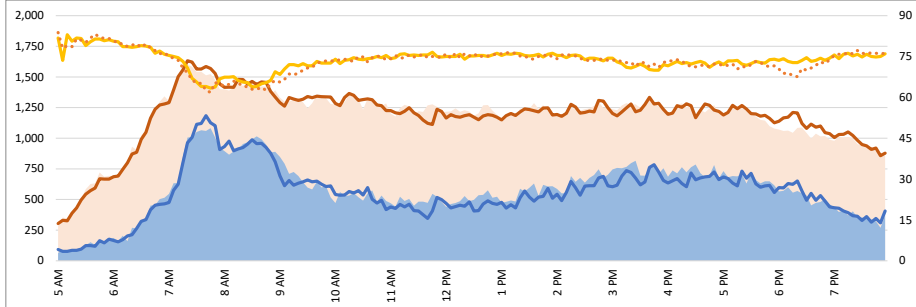
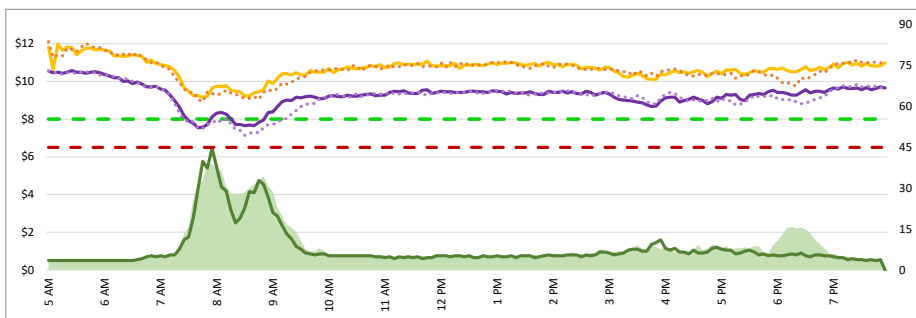


Map of SM101 Corridor (Not To Scale) DATA DATE: Week of 9/16 - 9/20



1. Lane Performance

Average Speeds, Volumes & Tolls - Current (Week of 9/16 - 9/20) vs Historic (Week of 9/9 - 9/13)



DATA DATE: Week of 9/16 - 9/20

Map of SM101 Corridor (Not To Scale)

SM101 Express Lanes Corridor Map

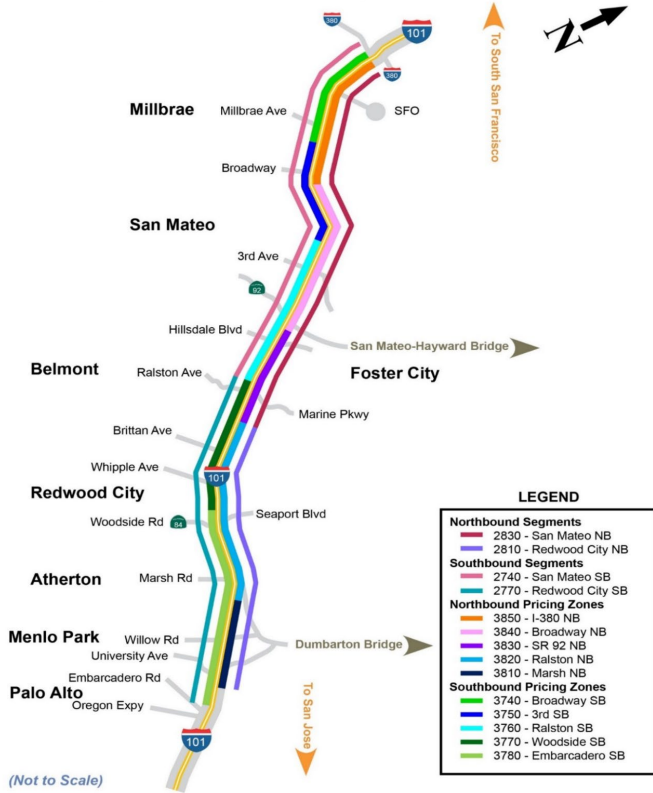


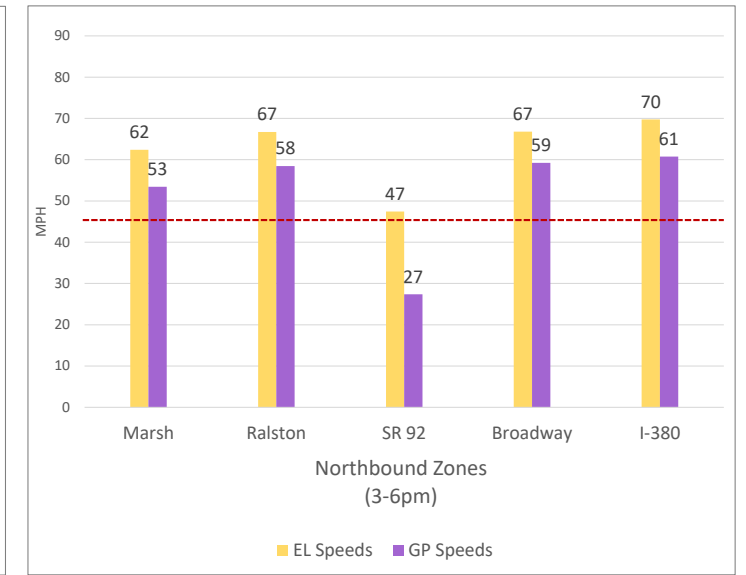
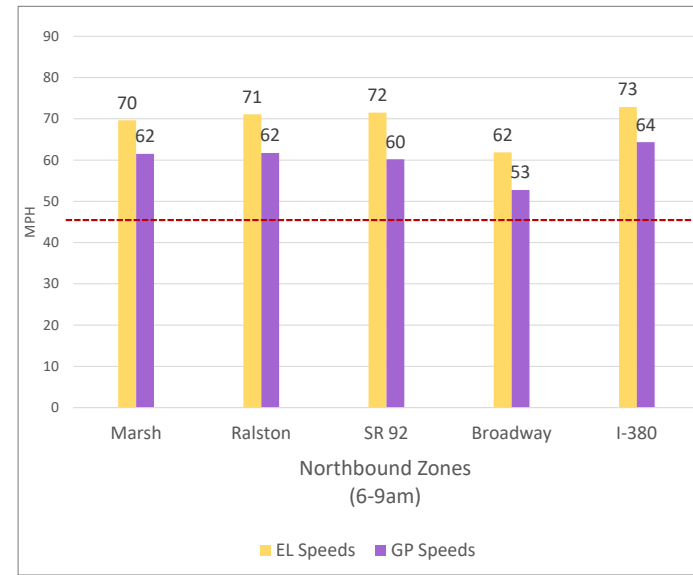
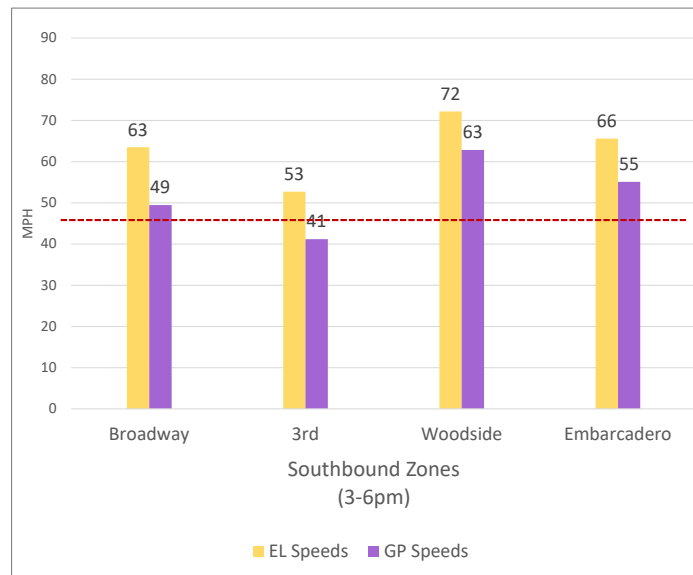
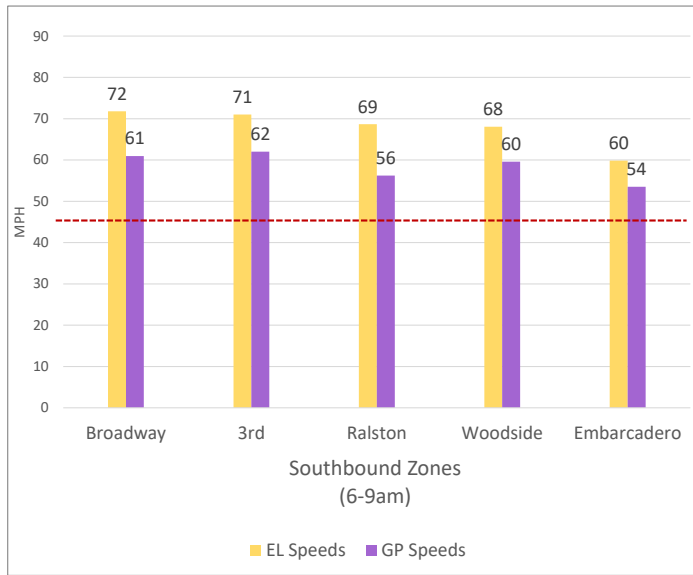
Chart Legend

—	Current EL Volume (Feb 08)	—	Historic EL Volume (Feb 01)
—	Current GP Volume (Feb 08)	—	Historic GP Volume (Feb 01)
—	Current EL Speed (Feb 08)	—	Historic EL Speed (Feb 01)
—	Current GP Speed (Feb 08)	—	Historic GP Speed (Feb 01)
—	Current Toll (Feb 08)	—	Historic Toll (Feb 01)
—	Max Operational Toll	—	Targeted Min. LOS - 45mph

DATA DATE: **Week of 9/16 - 9/20**

3. Toll System Performance

Speed Differential - Directional Peak Periods



-- Targeted Min. LOS - 45mph