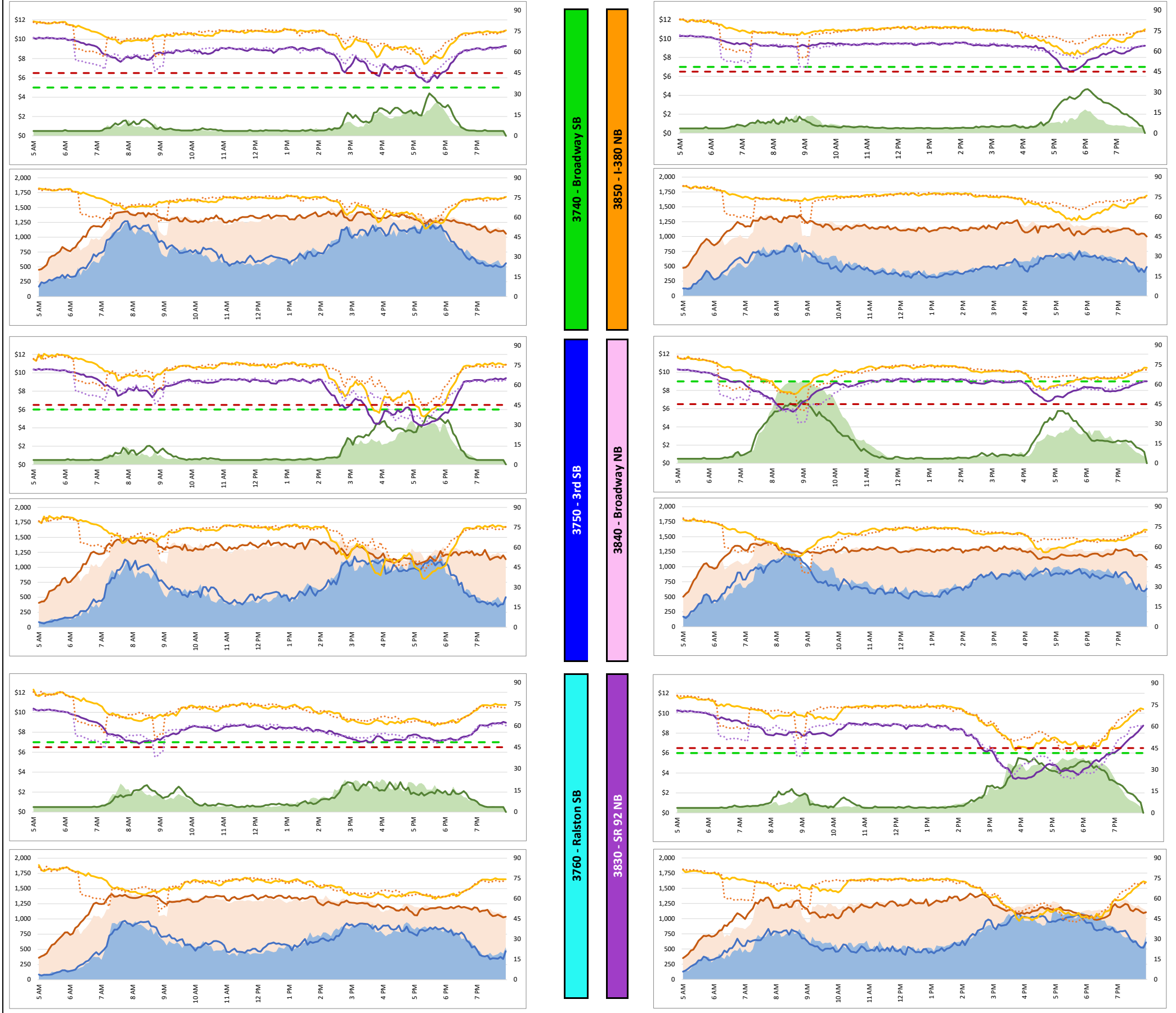


1. Lane Performance

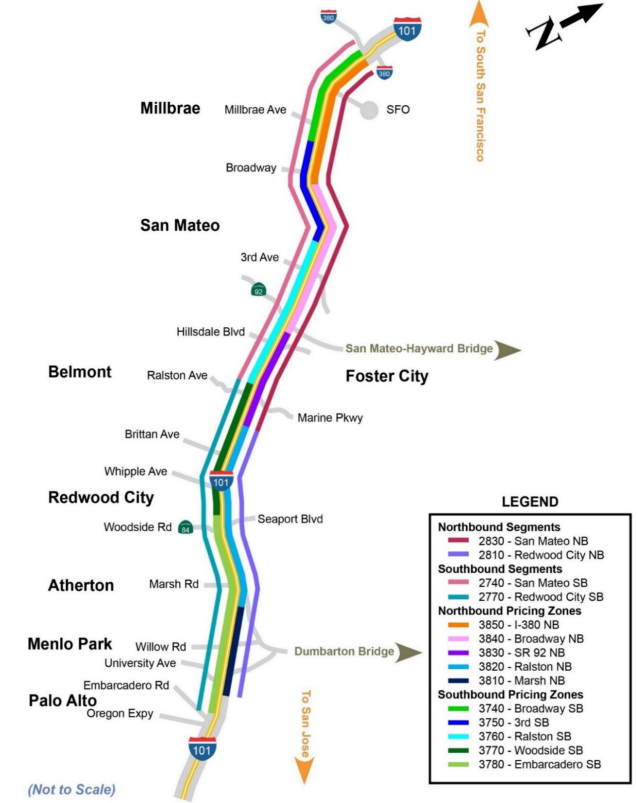
Average Speeds, Volumes & Tolls - Current (Week of 10/14 - 10/18) vs Historic (Week of 10/7 - 10/11)



DATA DATE: Week of 10/14 - 10/18

Map of SM101 Corridor (Not To Scale)

SM101 Express Lanes Corridor Map



(Not to Scale)

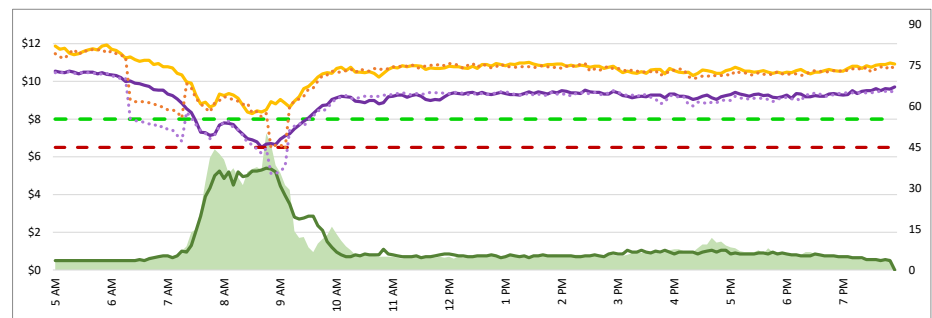
Chart Legend



DATA DATE: **Week of 10/14 - 10/18**

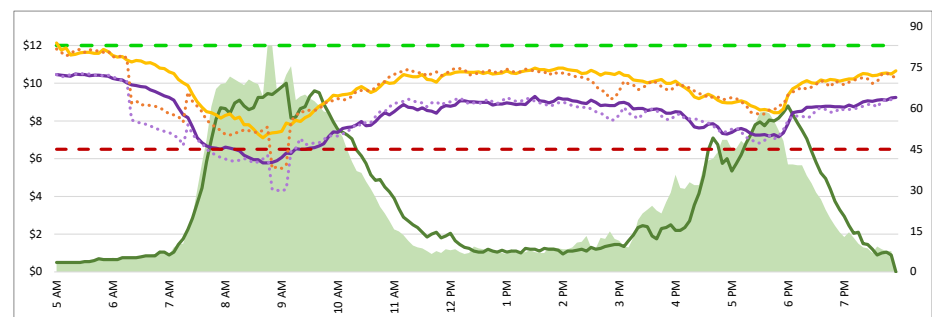
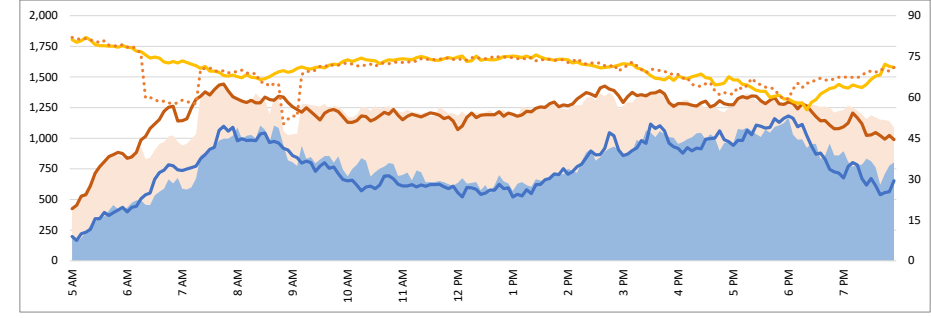
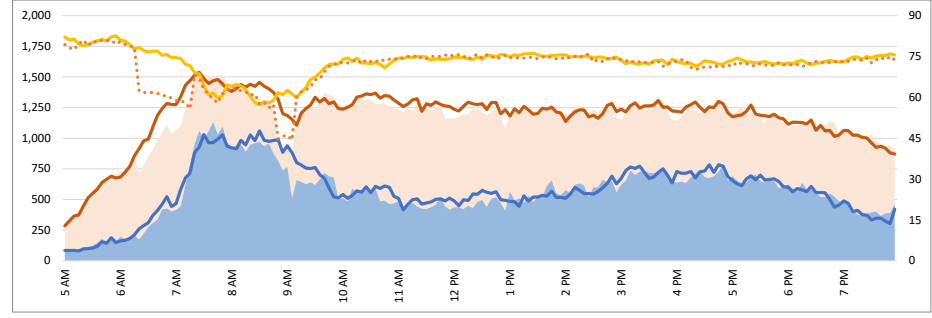
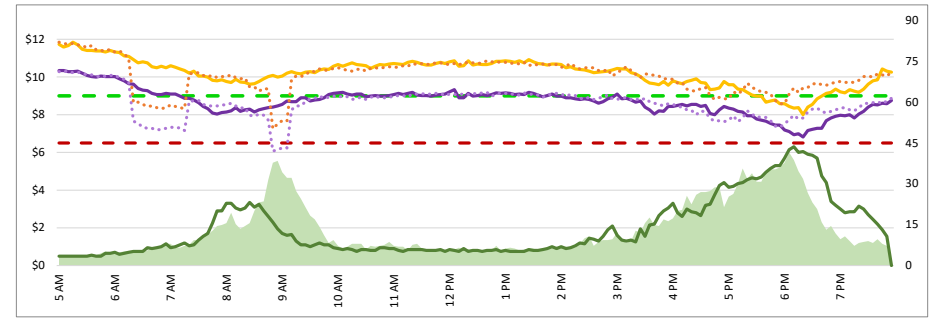
1. Lane Performance

Average Speeds, Volumes & Tolls - Current (Week of 10/14 - 10/18) vs Historic (Week of 10/7 - 10/11)



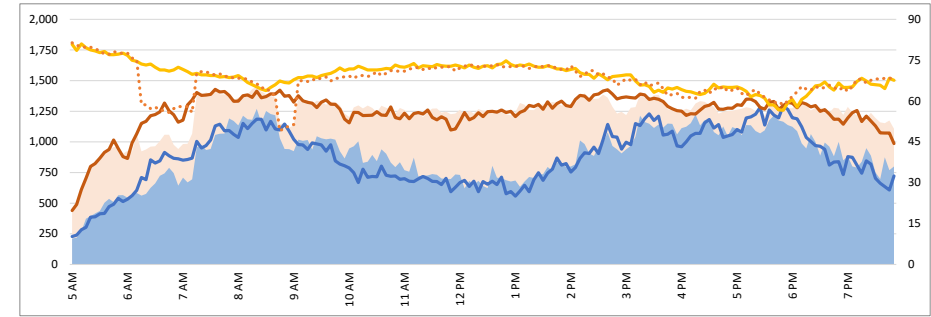
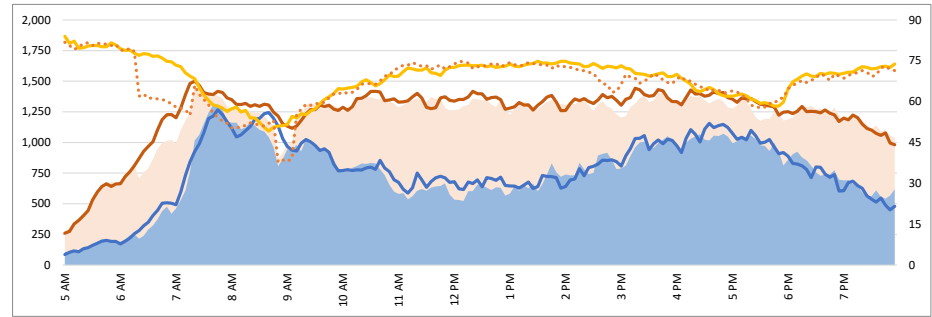
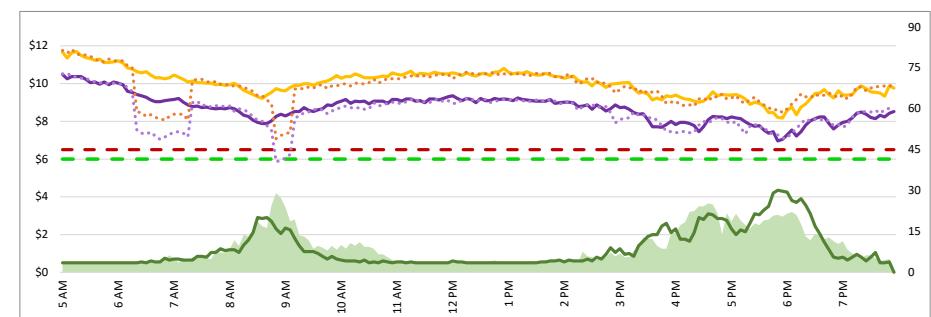
3770 - Woodside SB

3820 - Ralston NB



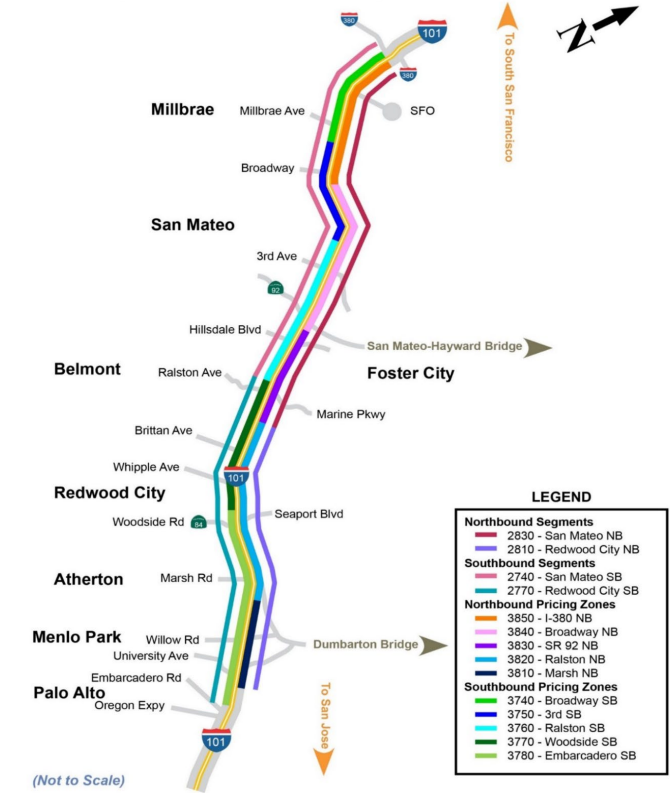
3780 - Embarcadero SB

3810 - Marsh NB



Map of SM101 Corridor (Not To Scale)

SM101 Express Lanes Corridor Map



- LEGEND**
- Northbound Segments**
 - 2830 - San Mateo NB
 - 2810 - Redwood City NB
 - Southbound Segments**
 - 2740 - San Mateo SB
 - 2770 - Redwood City SB
 - Northbound Pricing Zones**
 - 3850 - I-380 NB
 - 3840 - Broadway NB
 - 3830 - SR 92 NB
 - 3820 - Ralston NB
 - 3810 - Marsh NB
 - Southbound Pricing Zones**
 - 3740 - Broadway SB
 - 3750 - 3rd SB
 - 3760 - Ralston SB
 - 3770 - Woodside SB
 - 3780 - Embarcadero SB

(Not to Scale)

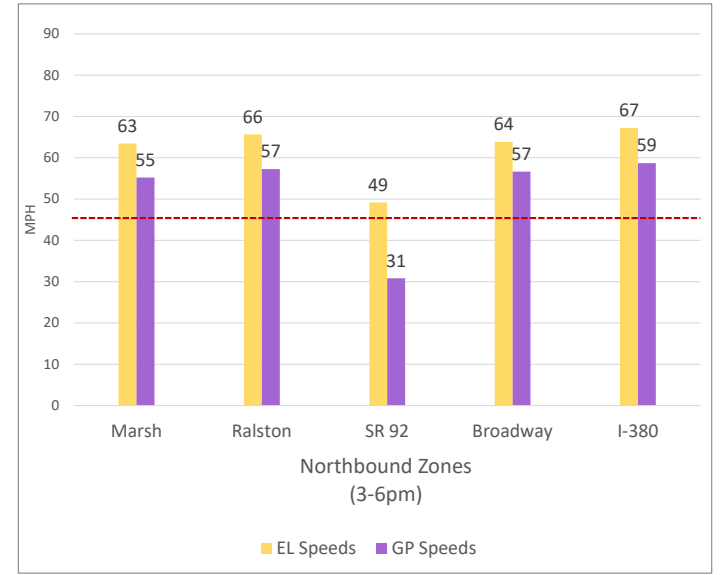
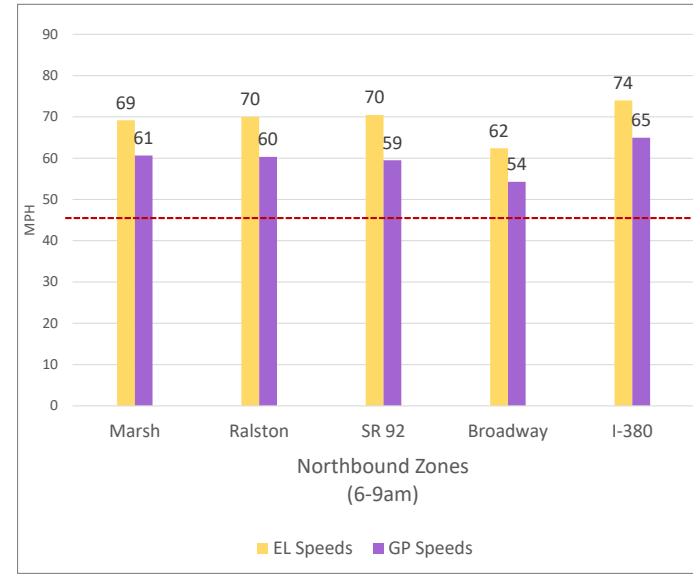
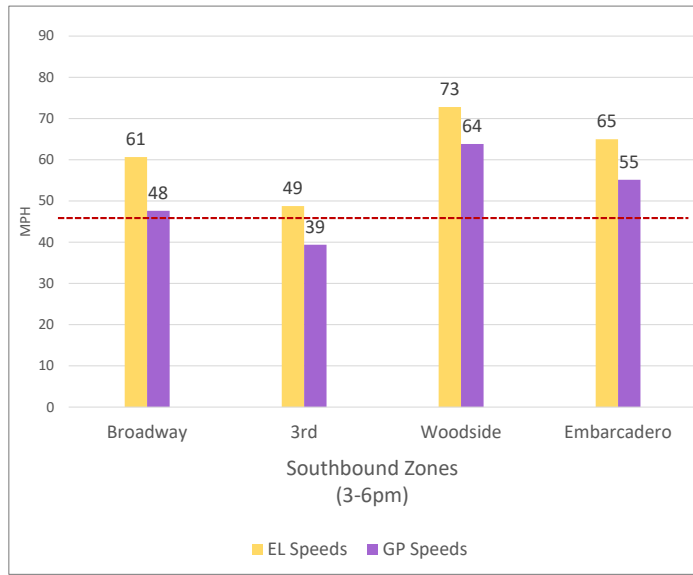
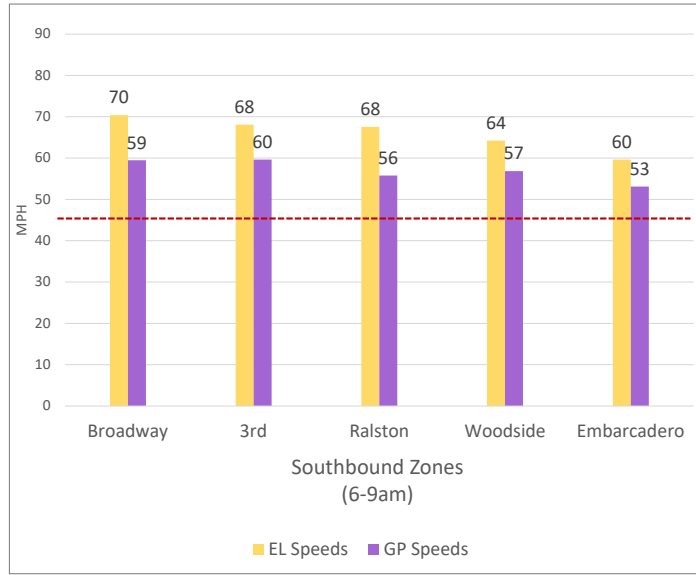
Chart Legend

- Current EL Volume (Feb 08)
- Current GP Volume (Feb 08)
- Current EL Speed (Feb 08)
- Current GP Speed (Feb 08)
- Current Toll (Feb 08)
- Max Operational Toll
- Historic EL Volume (Feb 01)
- Historic GP Volume (Feb 01)
- Historic EL Speed (Feb 01)
- Historic GP Speed (Feb 01)
- Historic Toll (Feb 01)
- Targeted Min. LOS - 45mph

DATA DATE: **Week of 10/14 - 10/18**

3. Toll System Performance

Speed Differential - Directional Peak Periods



-- Targeted Min. LOS - 45mph