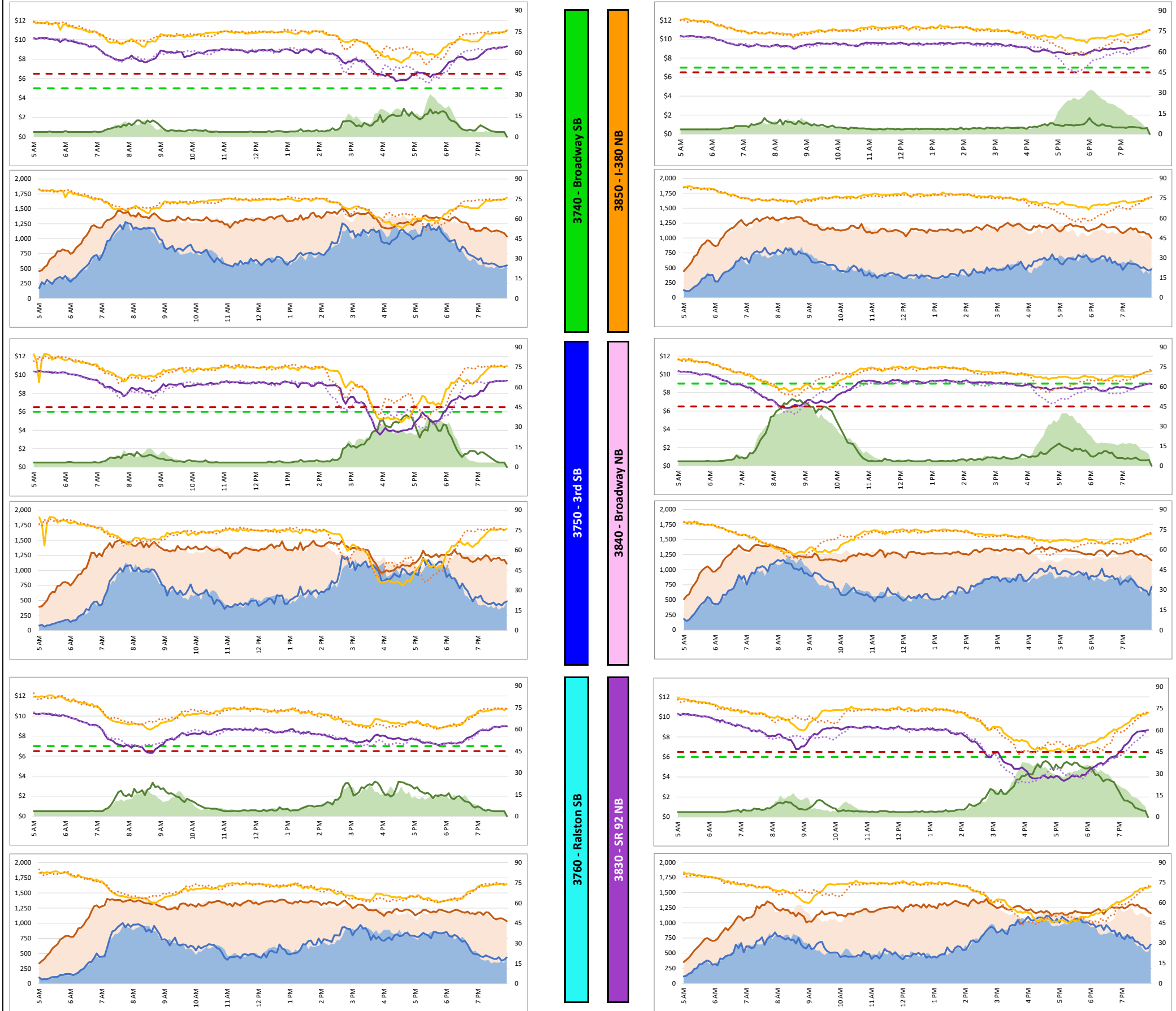


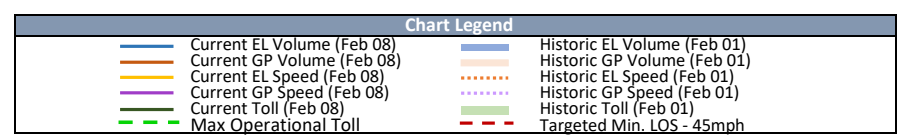
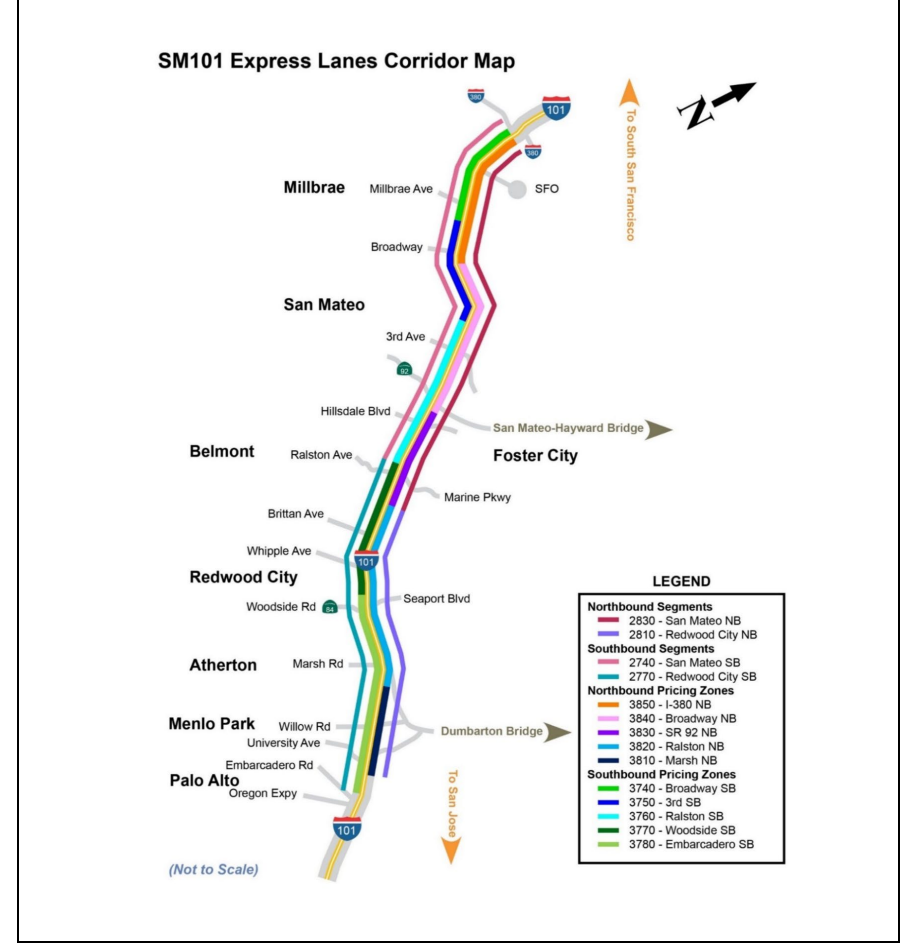
1. Lane Performance

Average Speeds, Volumes & Tolls - Current (Week of 10/21 - 10/25) vs Historic (Week of 10/14 - 10/18)



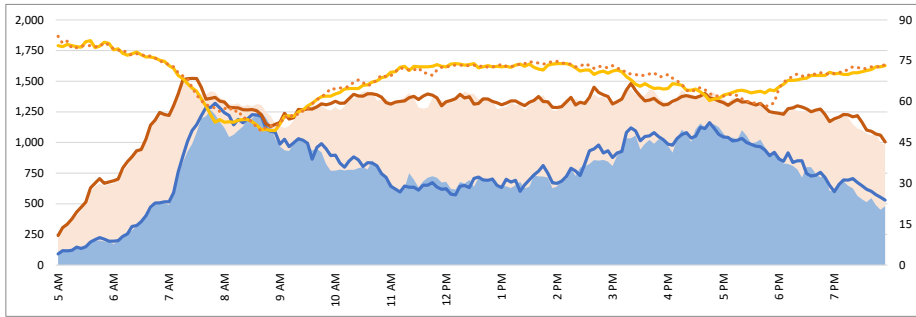
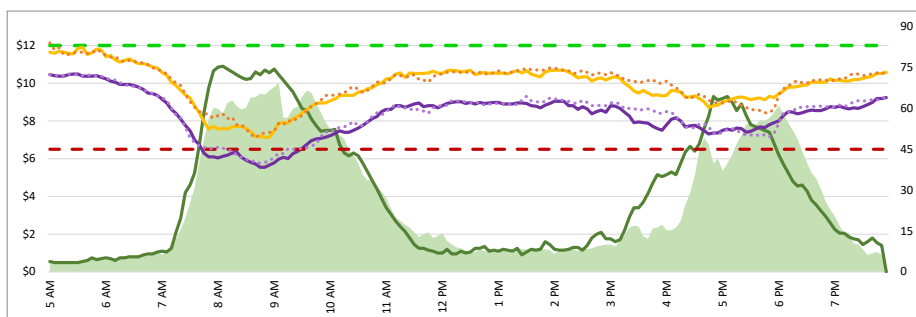
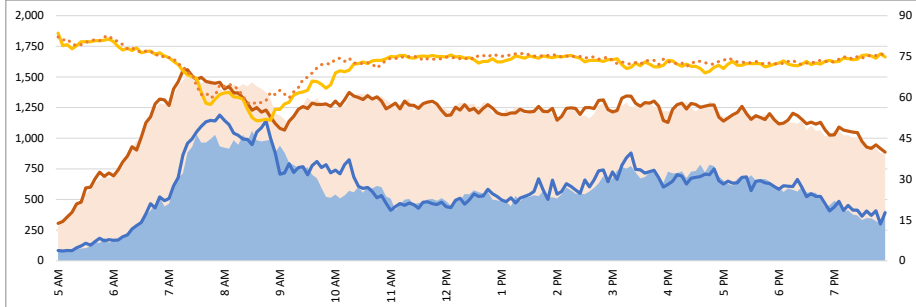
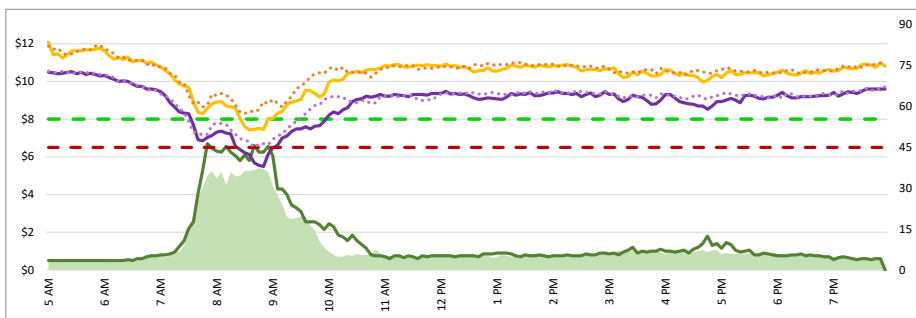
DATA DATE: Week of 10/21 - 10/25

Map of SM101 Corridor (Not To Scale)



1. Lane Performance

Average Speeds, Volumes & Tolls - Current (Week of 10/21 - 10/25) vs Historic (Week of 10/14 - 10/18)

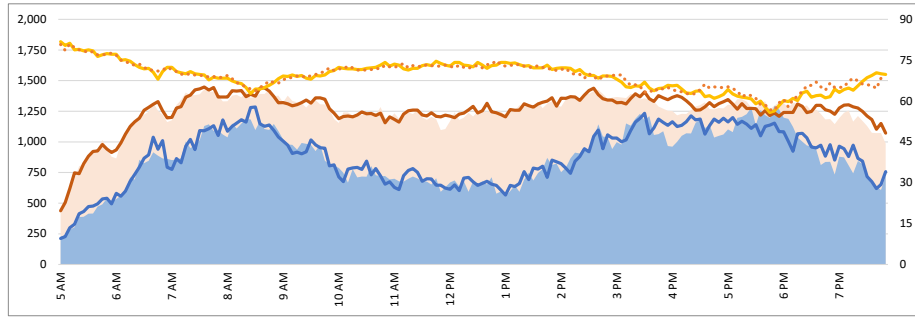
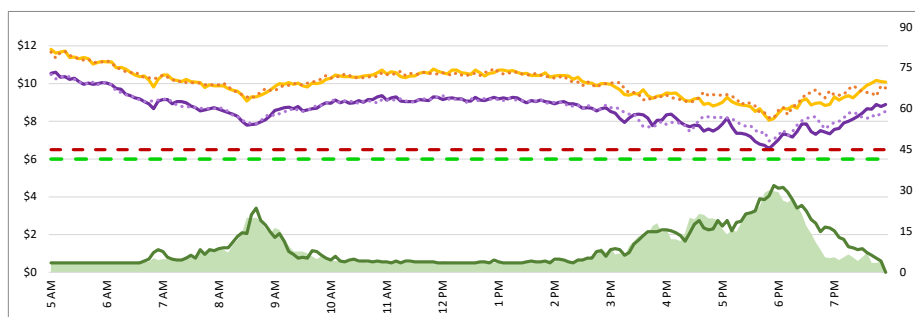
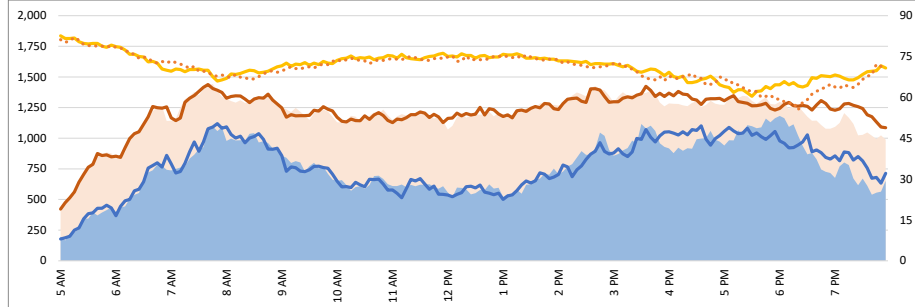
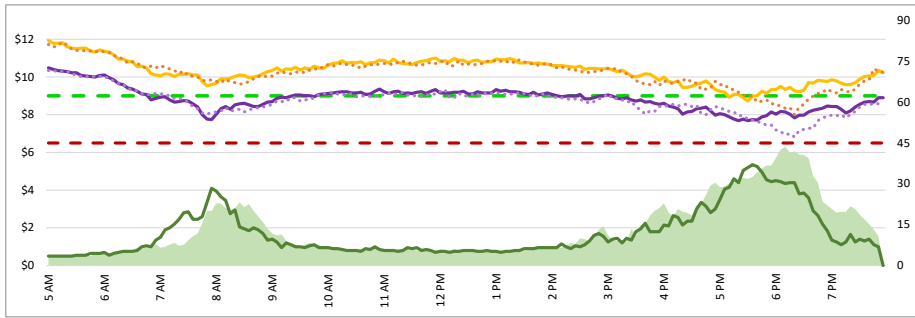


3770 - Woodside SB

3820 - Ralston NB

3780 - Embarcadero SB

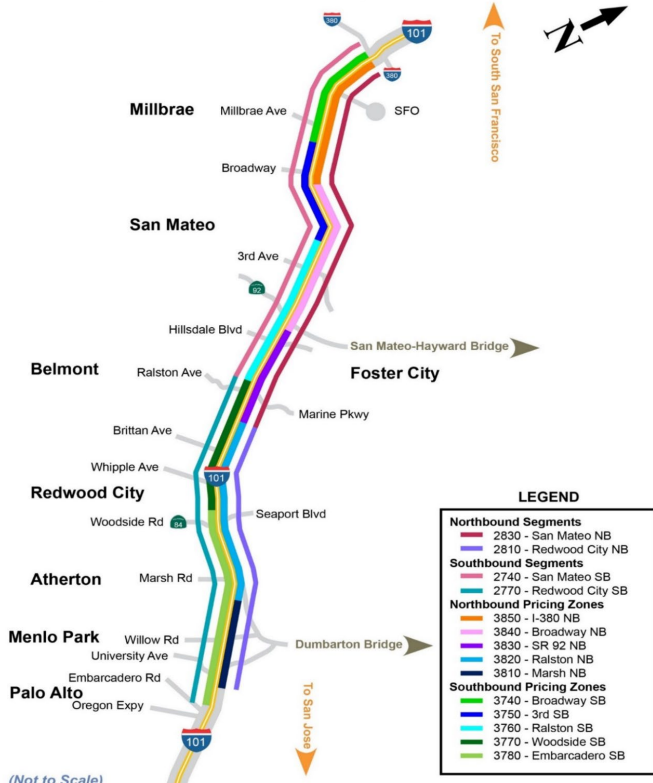
3810 - Marsh NB



DATA DATE: Week of 10/21 - 10/25

Map of SM101 Corridor (Not To Scale)

SM101 Express Lanes Corridor Map



(Not to Scale)

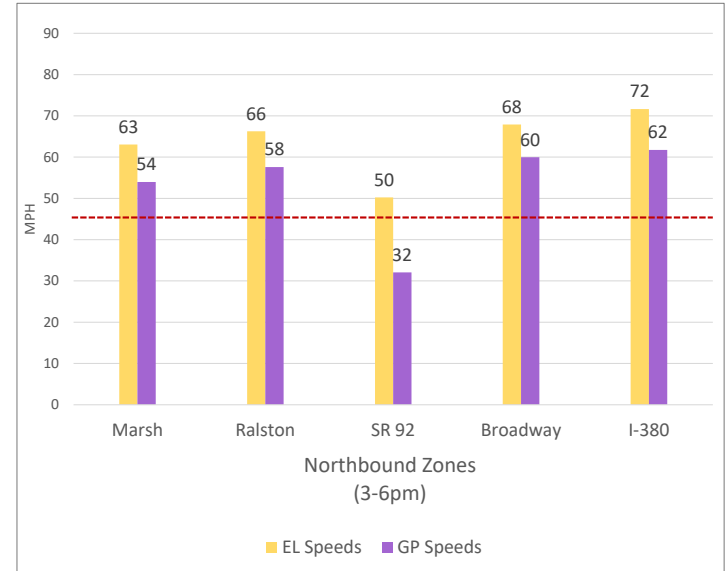
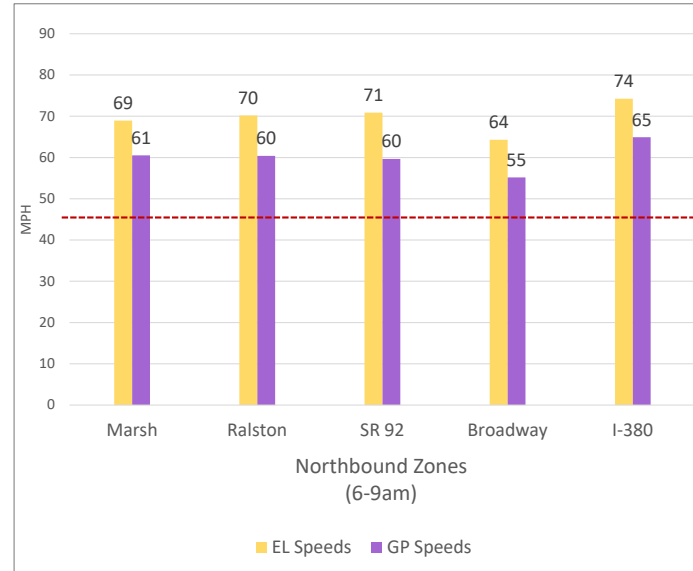
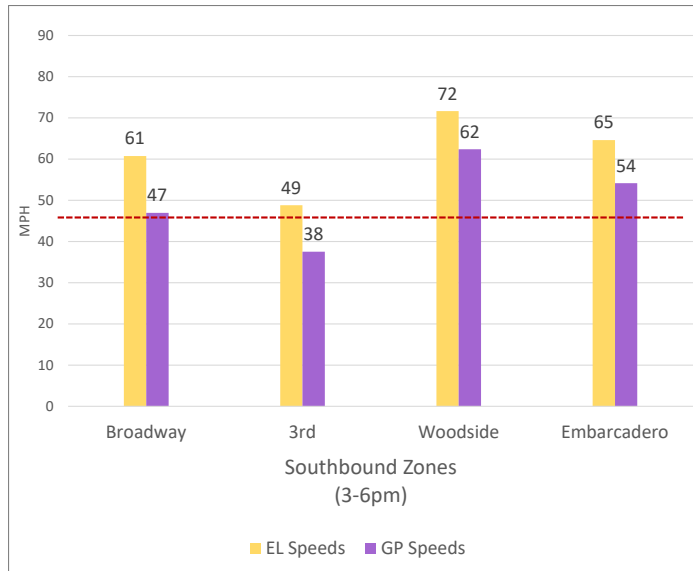
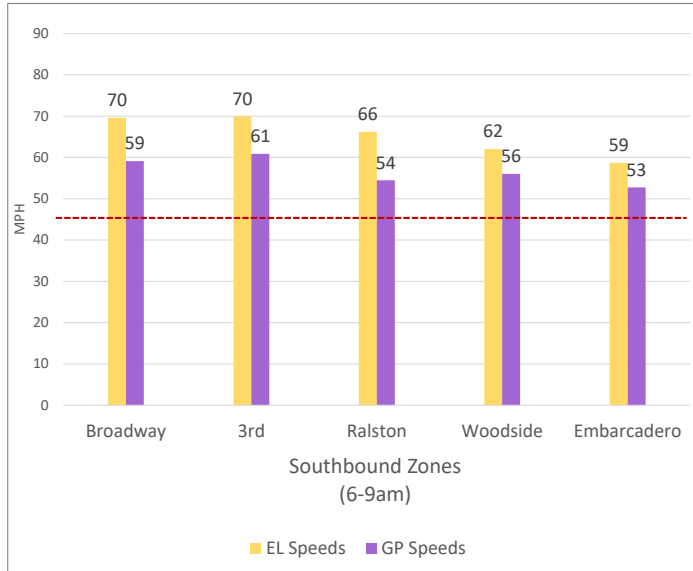
Chart Legend

- Current EL Volume (Feb 08)
- Current GP Volume (Feb 08)
- Current EL Speed (Feb 08)
- Current GP Speed (Feb 08)
- Current Toll (Feb 08)
- Max Operational Toll
- Historic EL Volume (Feb 01)
- Historic GP Volume (Feb 01)
- Historic EL Speed (Feb 01)
- Historic GP Speed (Feb 01)
- Historic Toll (Feb 01)
- Targeted Min. LOS - 45mph

DATA DATE: **Week of 10/21 - 10/25**

3. Toll System Performance

Speed Differential - Directional Peak Periods



- - Targeted Min. LOS - 45mph