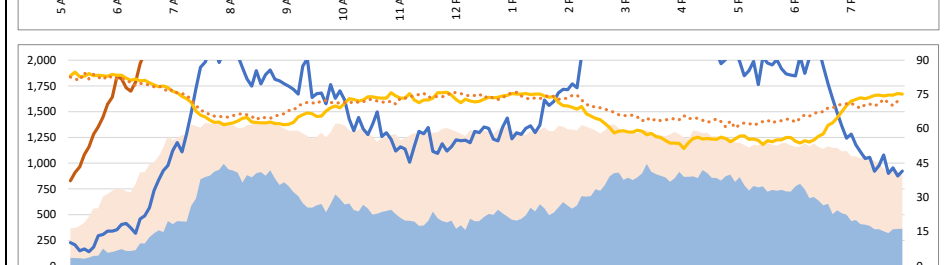
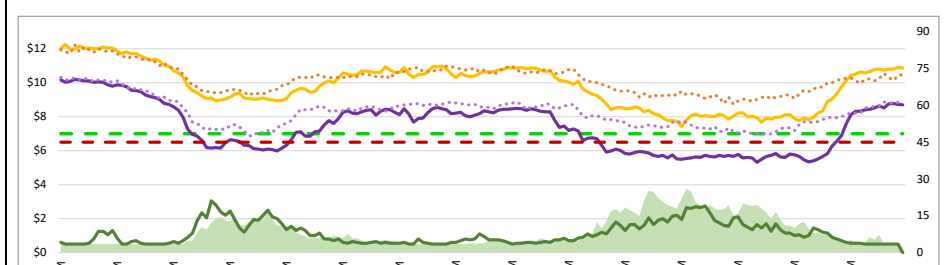
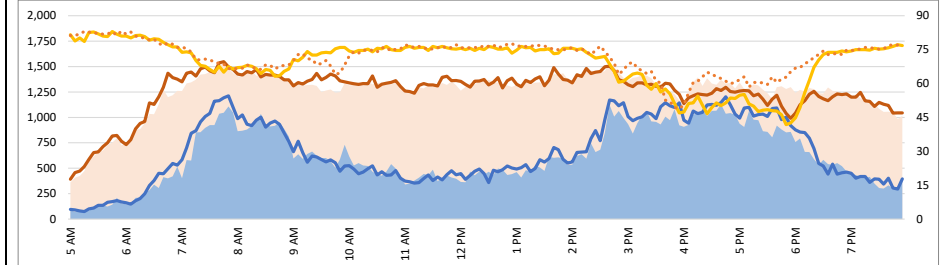
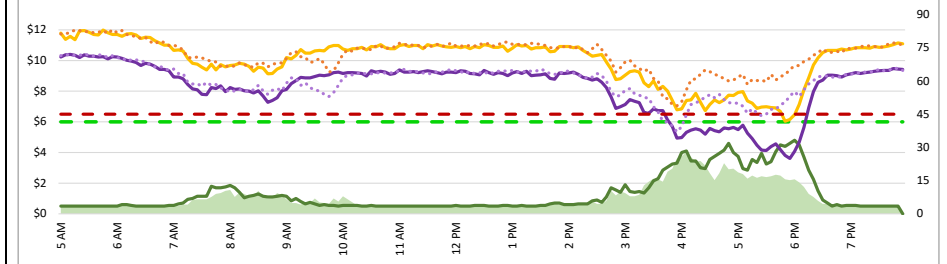
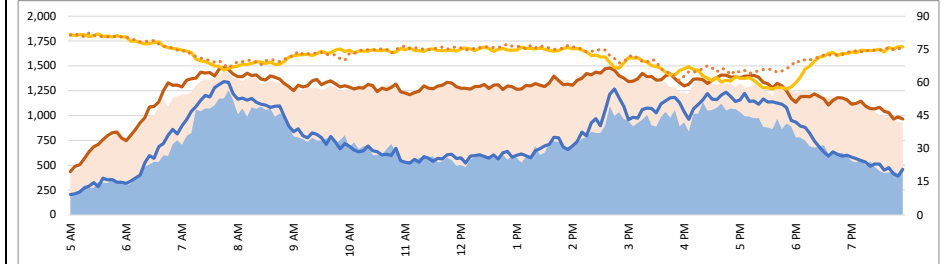
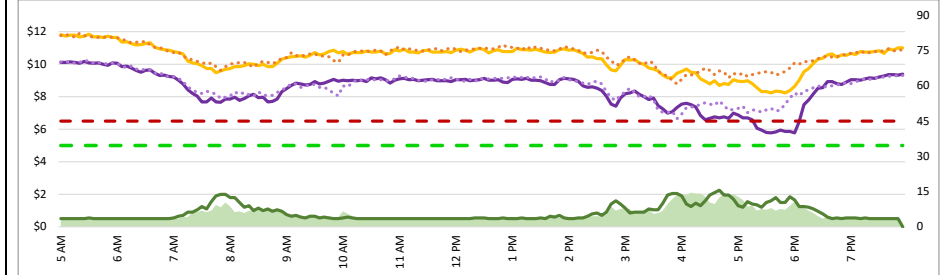


1. Lane Performance

Average Speeds, Volumes & Tolls - Current (Week of 11/4 - 11/8) vs Historic (Week of 10/28 - 11/1)



3740 - Broadway SB

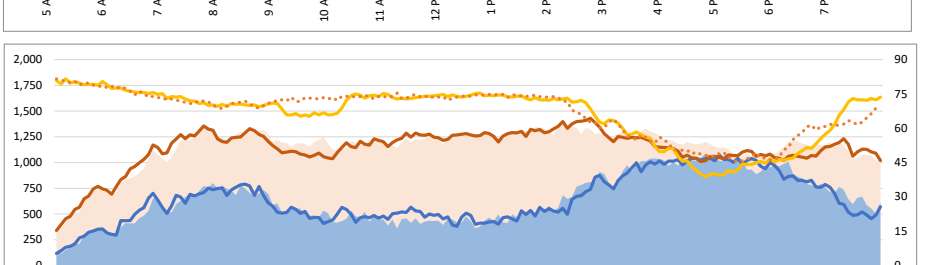
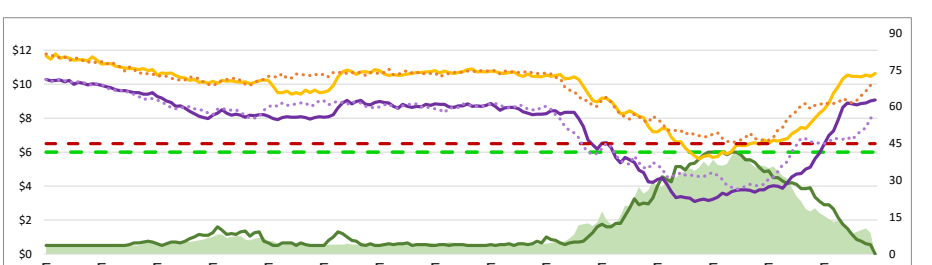
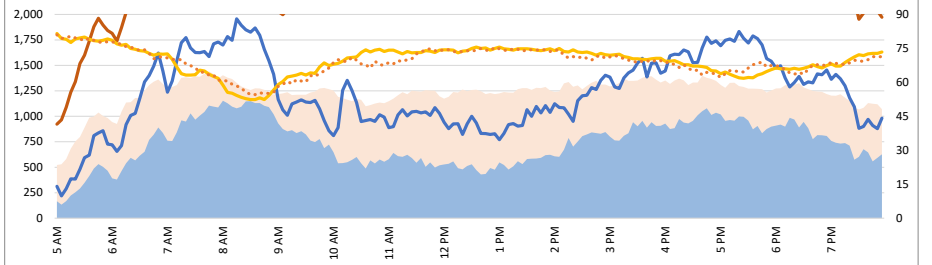
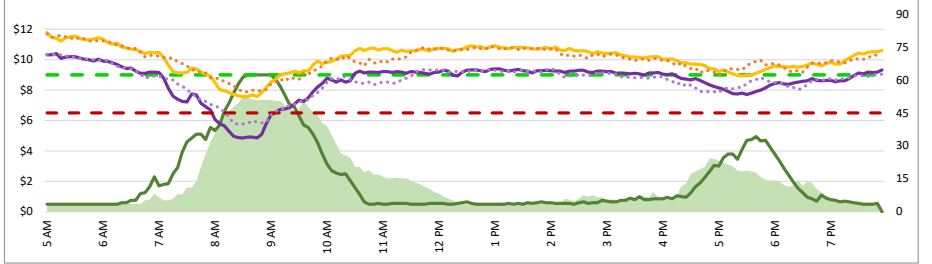
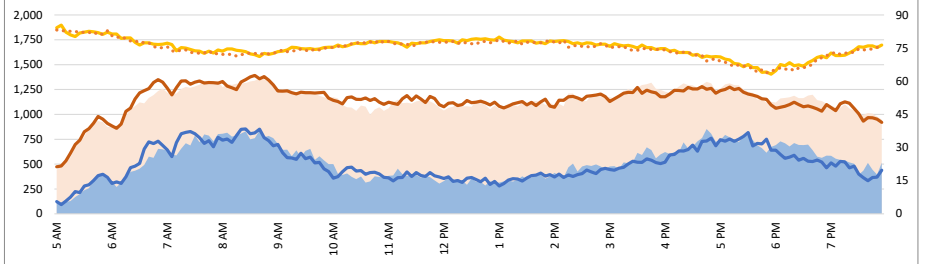
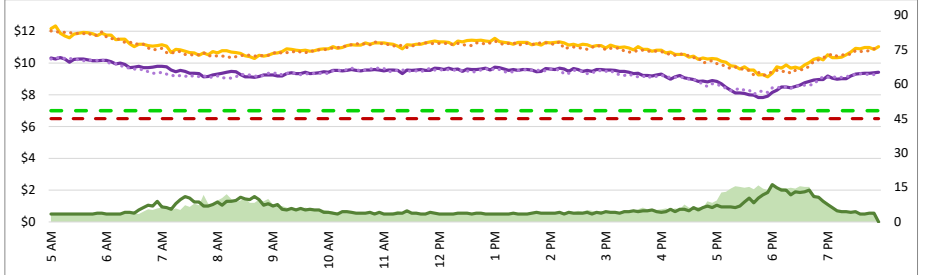
3850 - I-380 NB

3750 - 3rd SB

3840 - Broadway NB

3760 - Ralston SB

3830 - SR 92 NB



Map of SM101 Corridor (Not To Scale) DATA DATE: Week of 11/4 - 11/8

SM101 Express Lanes Corridor Map

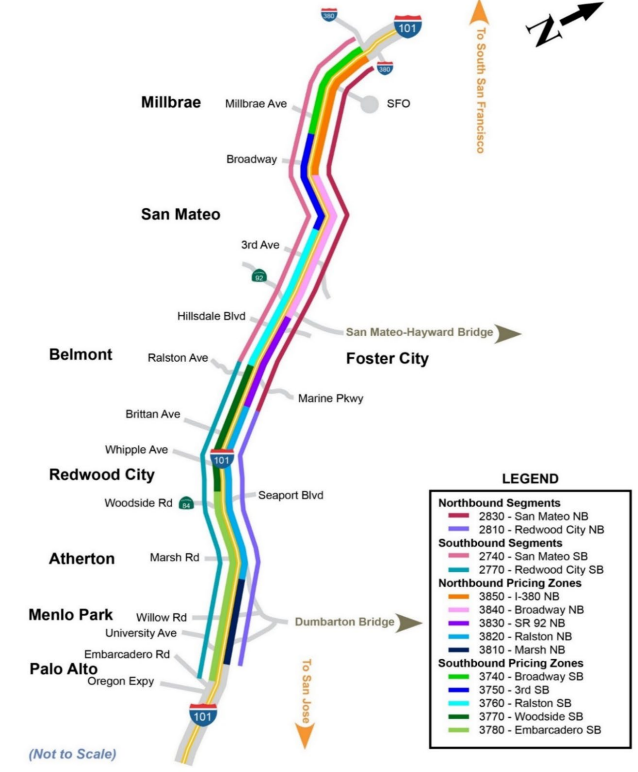
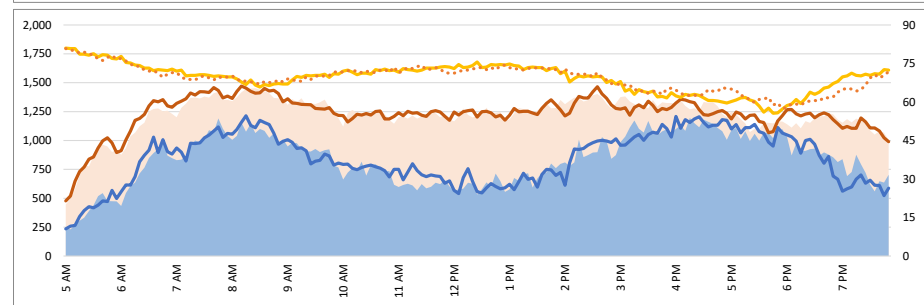
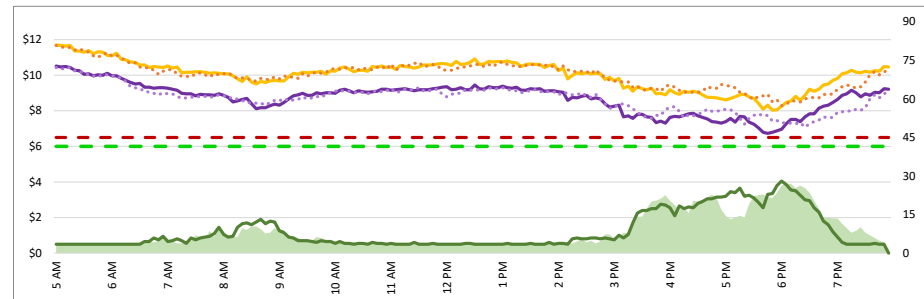
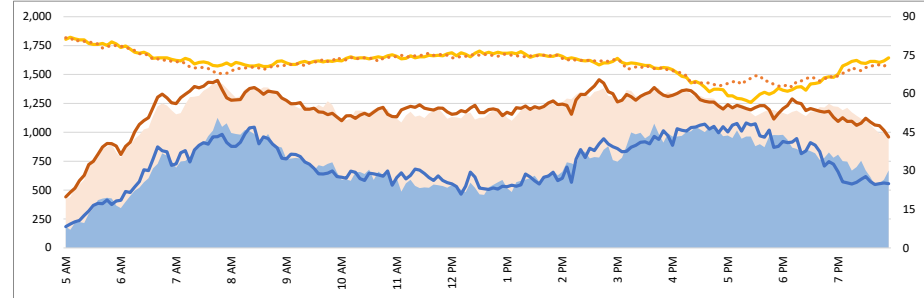
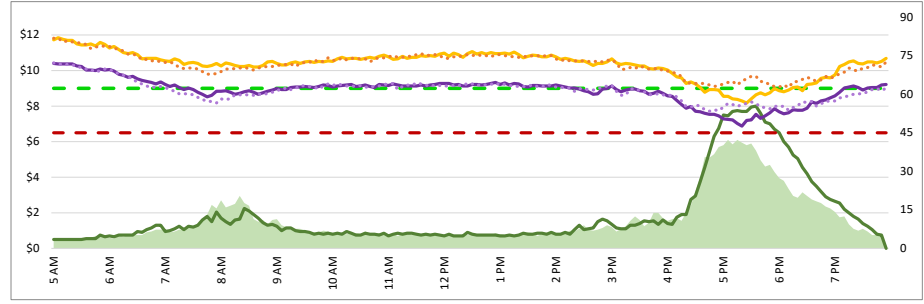
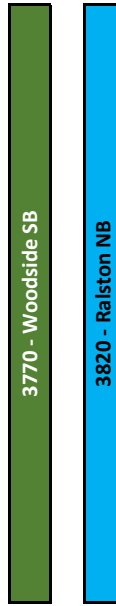
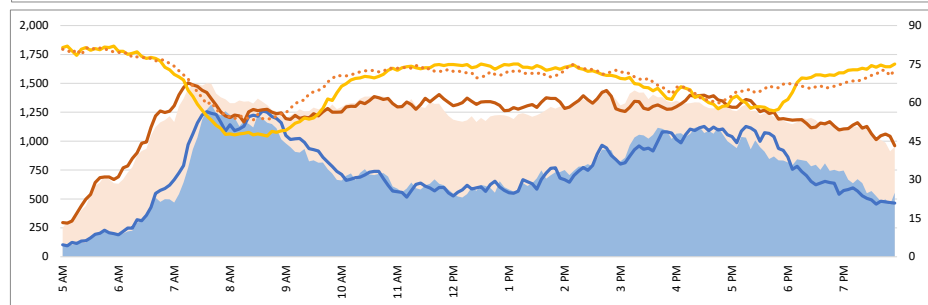
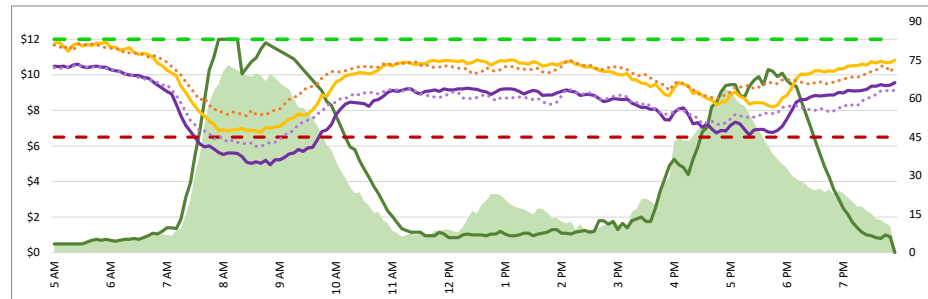
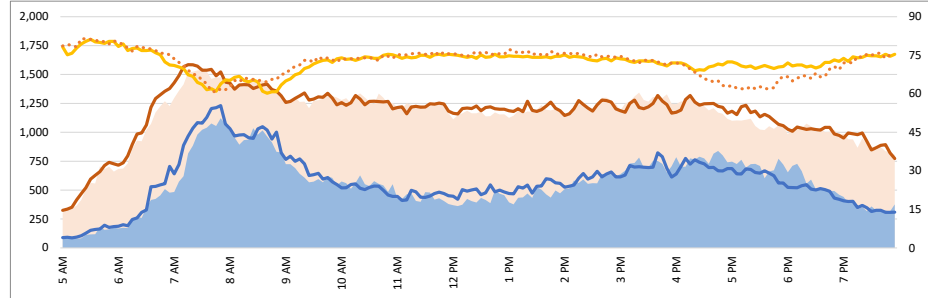
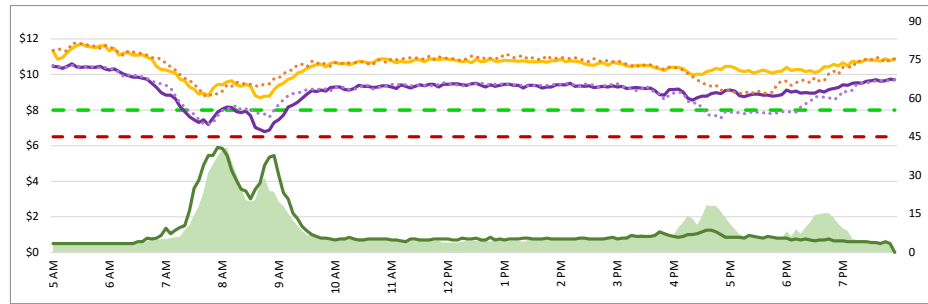


Chart Legend

— Current EL Volume (Feb 08)	— Historic EL Volume (Feb 01)
— Current GP Volume (Feb 08)	— Historic GP Volume (Feb 01)
— Current EL Speed (Feb 08)	— Historic EL Speed (Feb 01)
— Current GP Speed (Feb 08)	— Historic GP Speed (Feb 01)
— Current Toll (Feb 08)	— Historic Toll (Feb 01)
— Max Operational Toll	— Targeted Min. LOS - 45mph

1. Lane Performance

Average Speeds, Volumes & Tolls - Current (Week of 11/4 - 11/8) vs Historic (Week of 10/28 - 11/1)



DATA DATE: Week of 11/4 - 11/8

Map of SM101 Corridor (Not To Scale)

SM101 Express Lanes Corridor Map

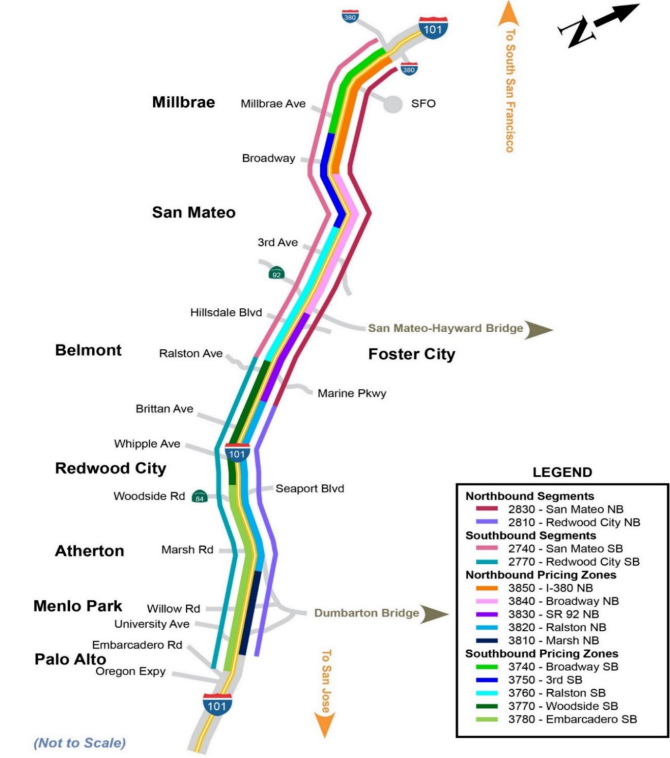


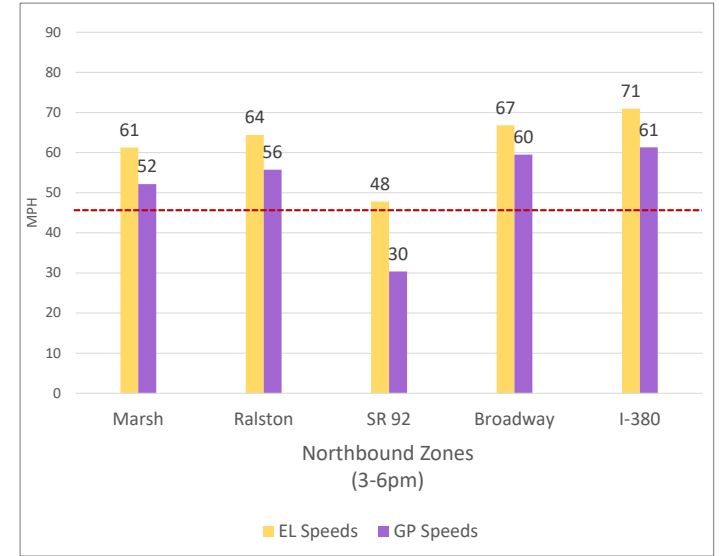
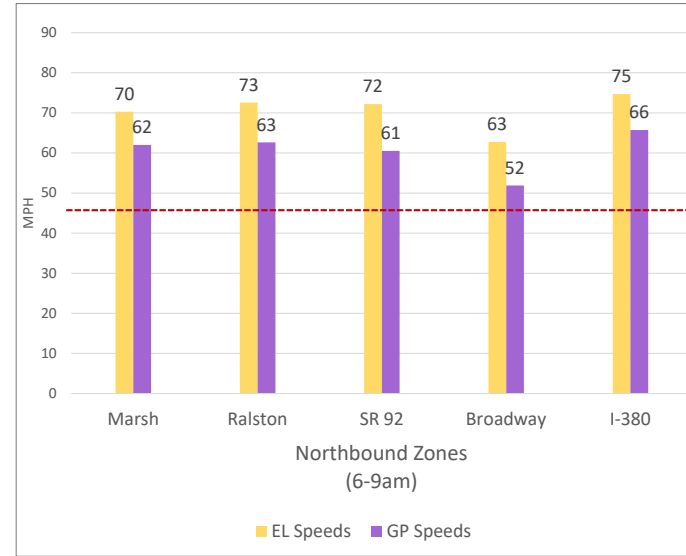
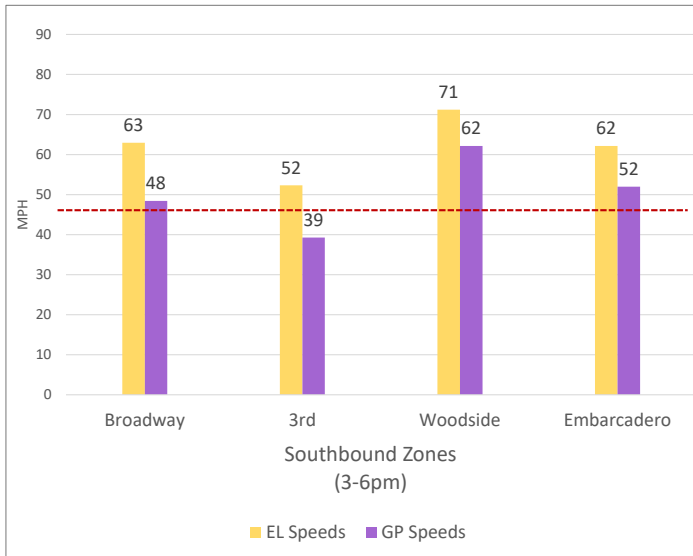
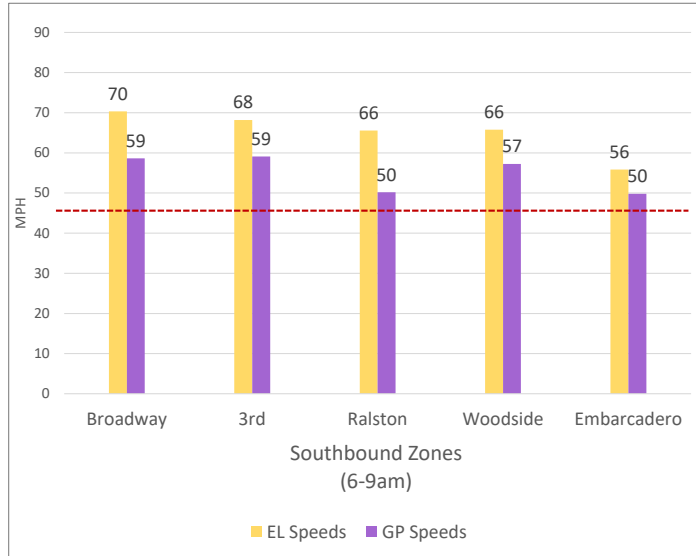
Chart Legend

- Current EL Volume (Feb 08)
- Current GP Volume (Feb 08)
- Current EL Speed (Feb 08)
- Current GP Speed (Feb 08)
- Current Toll (Feb 08)
- Historic EL Volume (Feb 01)
- Historic GP Volume (Feb 01)
- Historic EL Speed (Feb 01)
- Historic GP Speed (Feb 01)
- Historic Toll (Feb 01)
- Targeted Min. LOS - 45mph

DATA DATE: Week of 11/4 - 11/8

3. Toll System Performance

Speed Differential - Directional Peak Periods



-- Targeted Min. LOS - 45mph