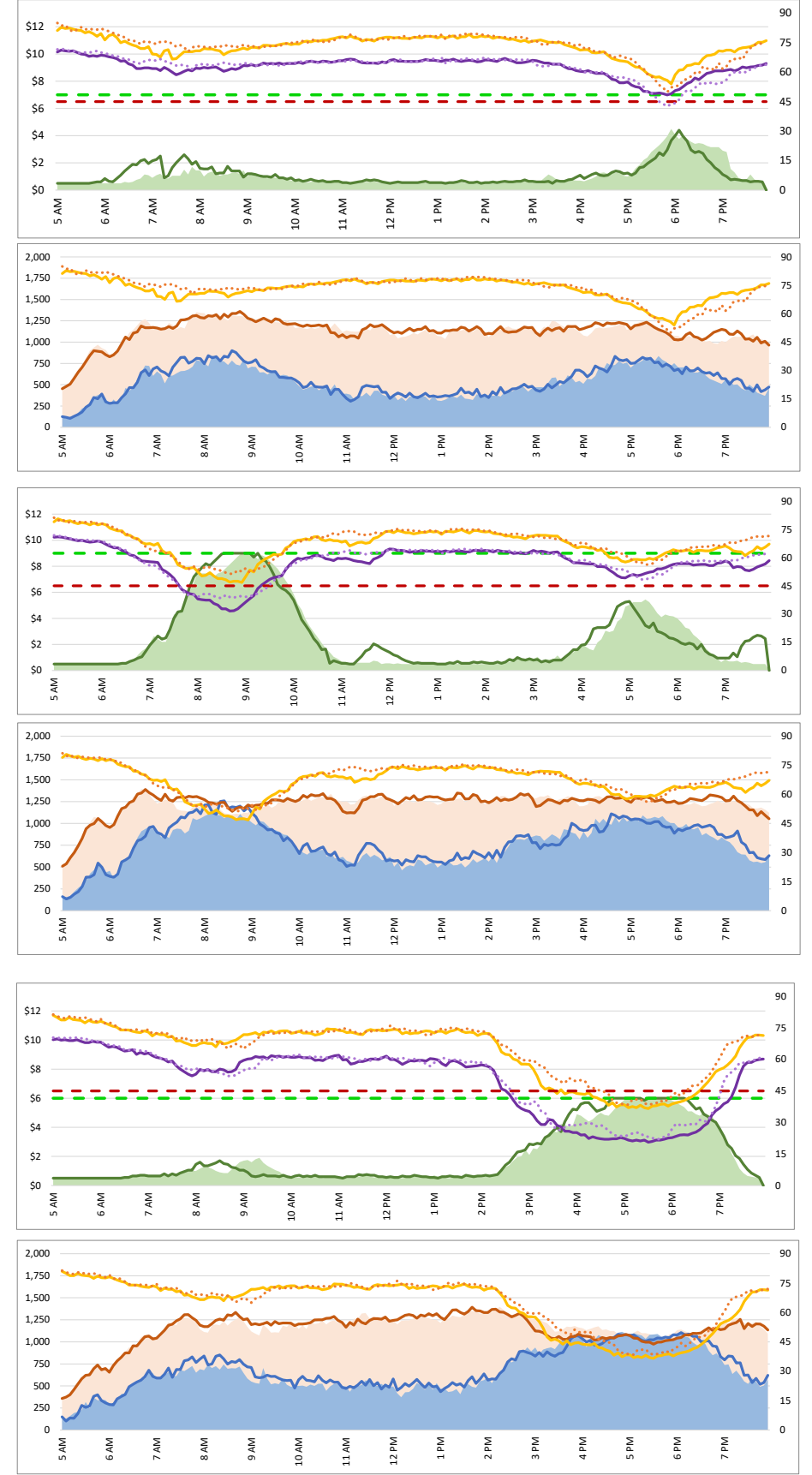
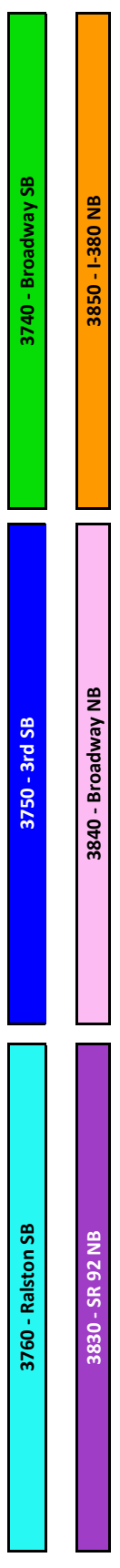
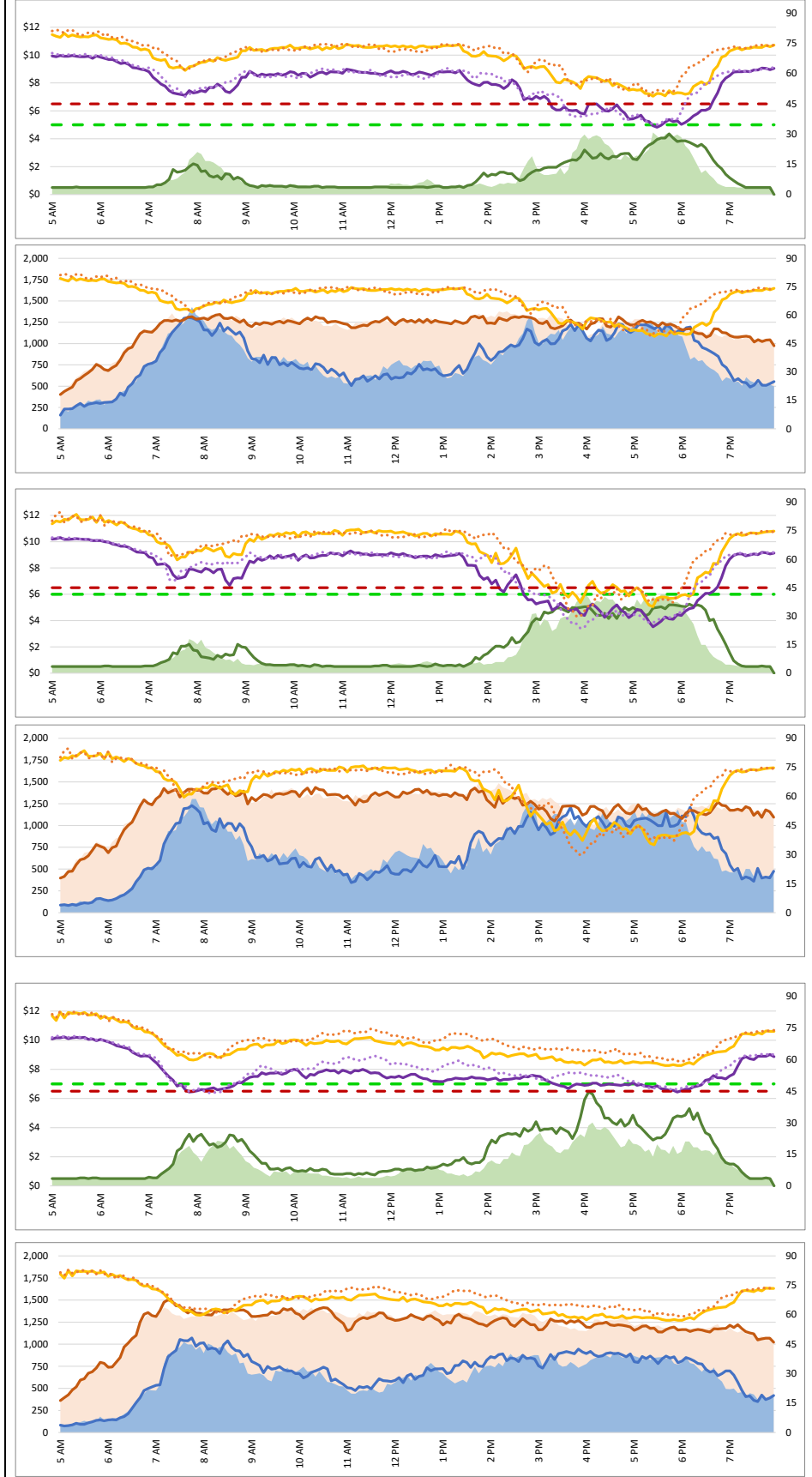
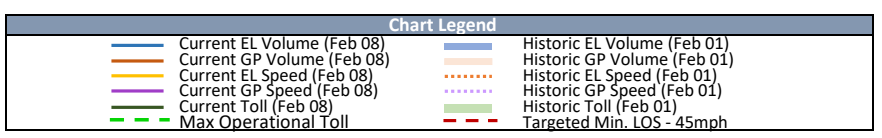
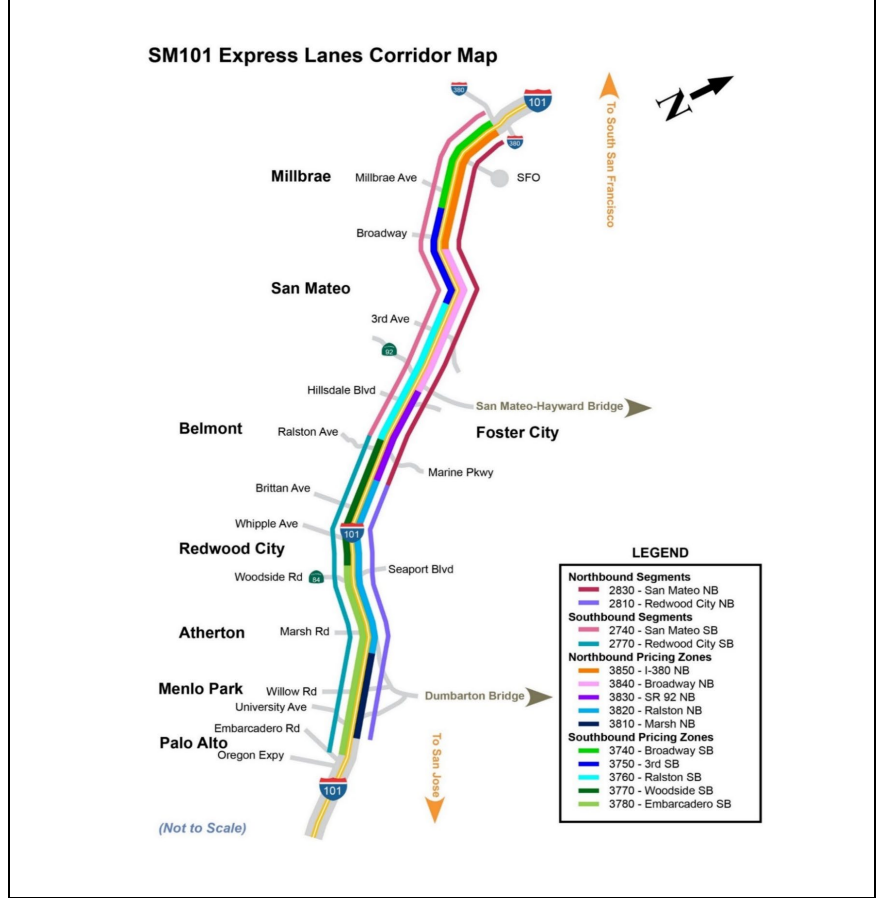


1. Lane Performance

Average Speeds, Volumes & Tolls - Current (Week of 12/9 - 12/13) vs Historic (Week of 12/2 - 12/6)

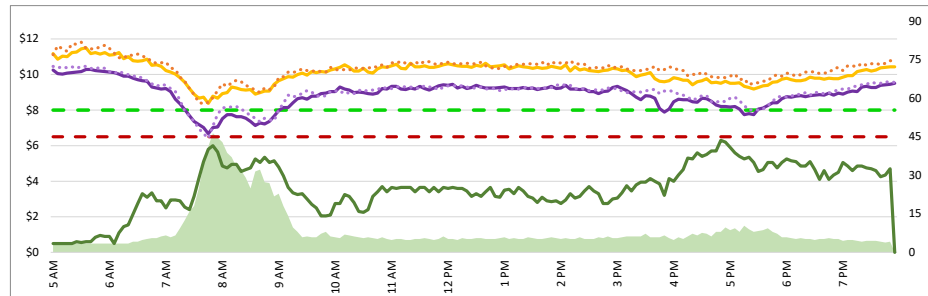


Map of SM101 Corridor (Not To Scale) DATA DATE: Week of 12/9 - 12/13



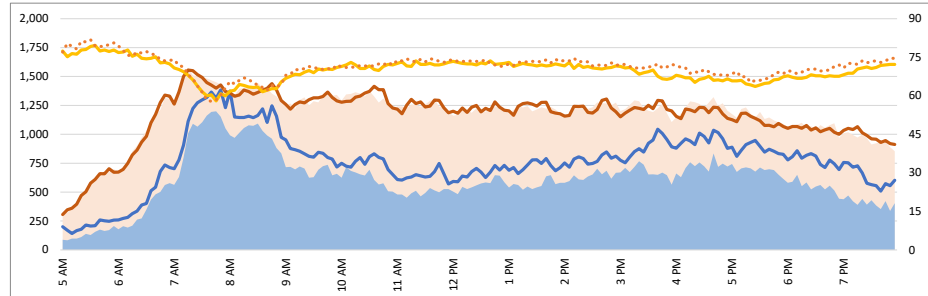
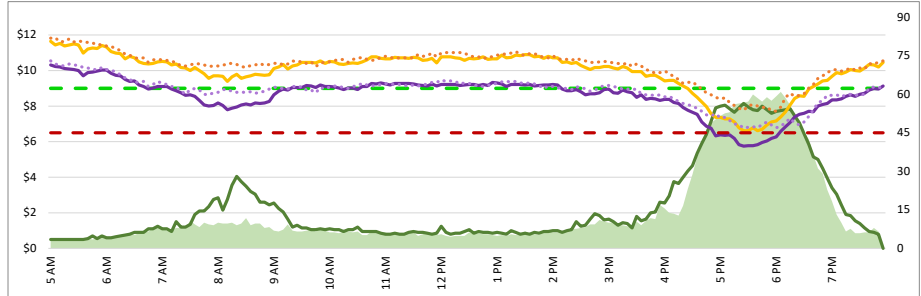
1. Lane Performance

Average Speeds, Volumes & Tolls - Current (Week of 12/9 - 12/13) vs Historic (Week of 12/2 - 12/6)



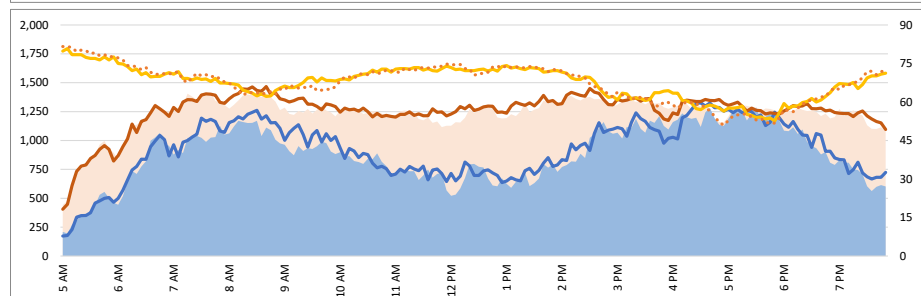
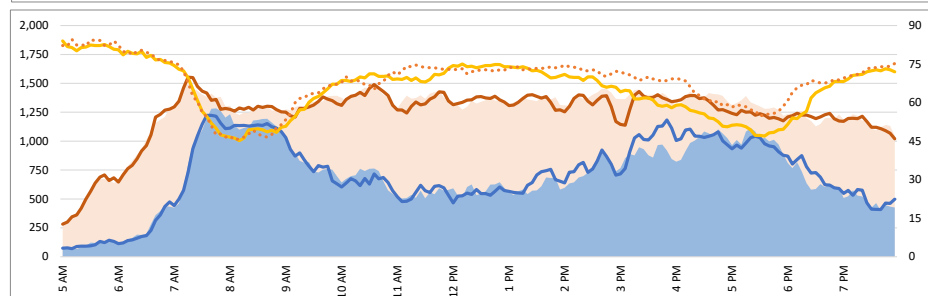
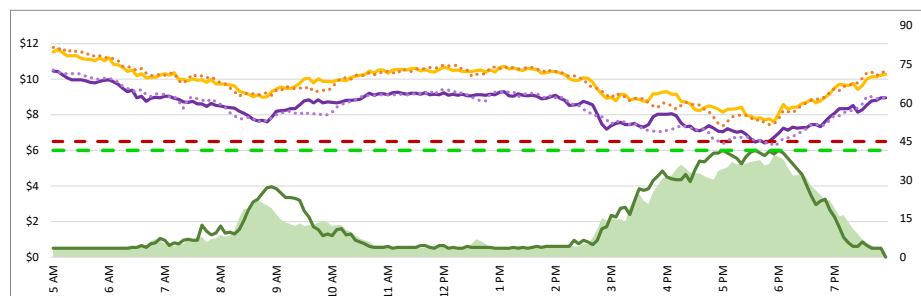
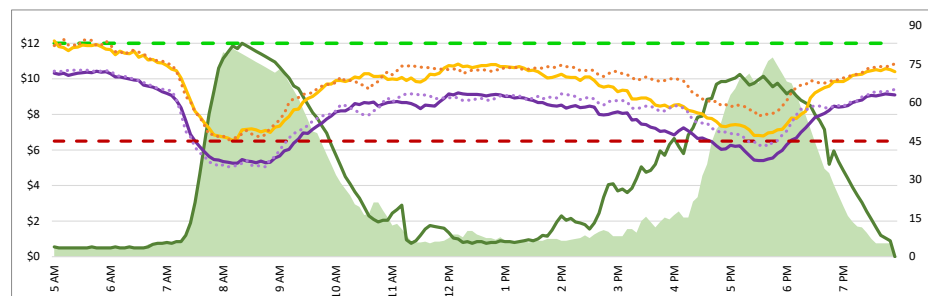
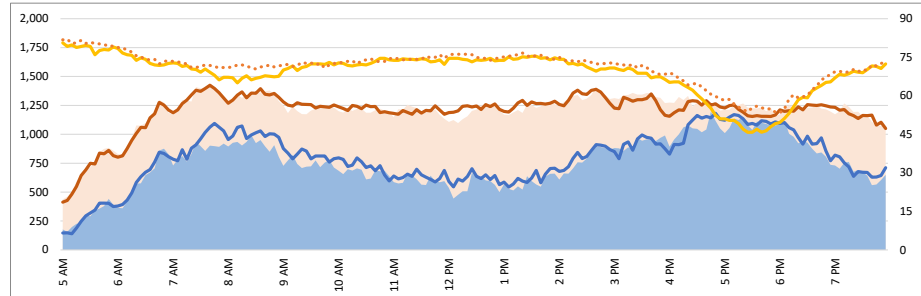
3770 - Woodside SB

3820 - Ralston NB



3780 - Embarcadero SB

3810 - Marsh NB



DATA DATE: Week of 12/9 - 12/13

Map of SM101 Corridor (Not To Scale)

SM101 Express Lanes Corridor Map

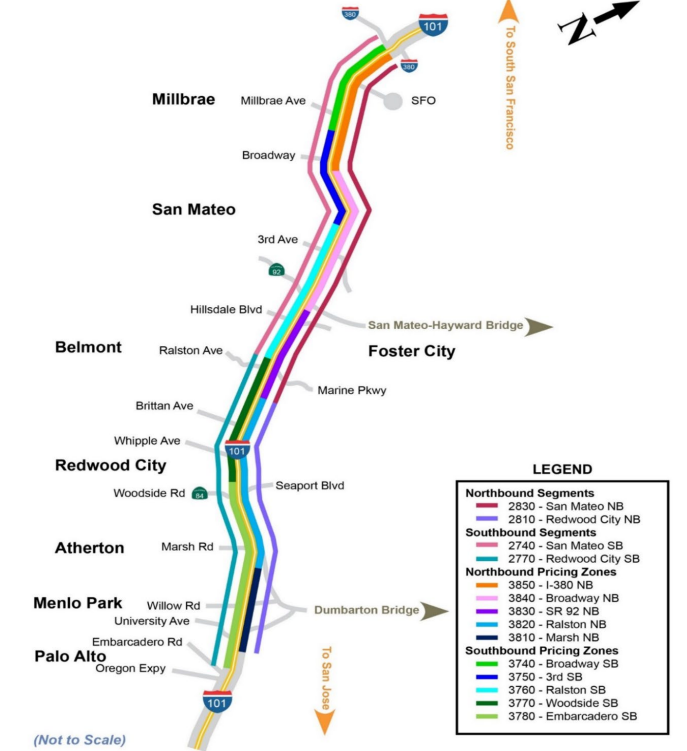


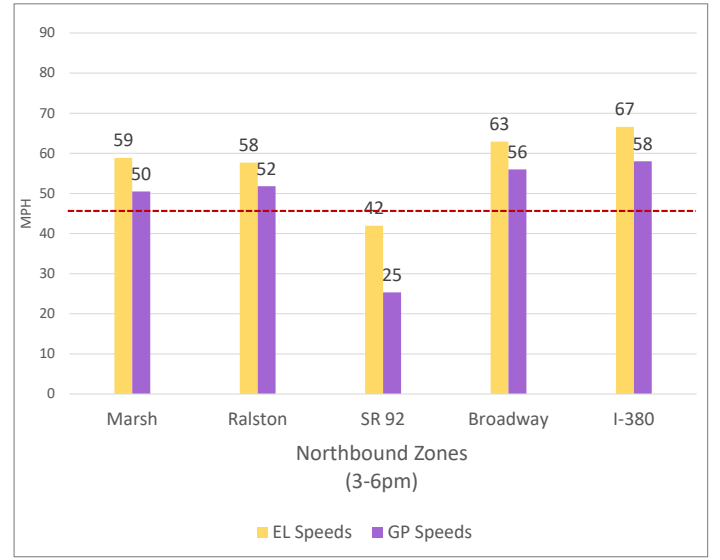
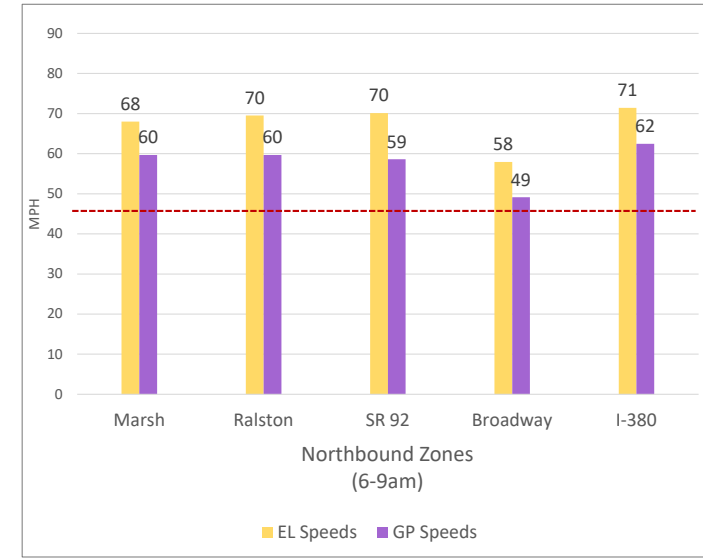
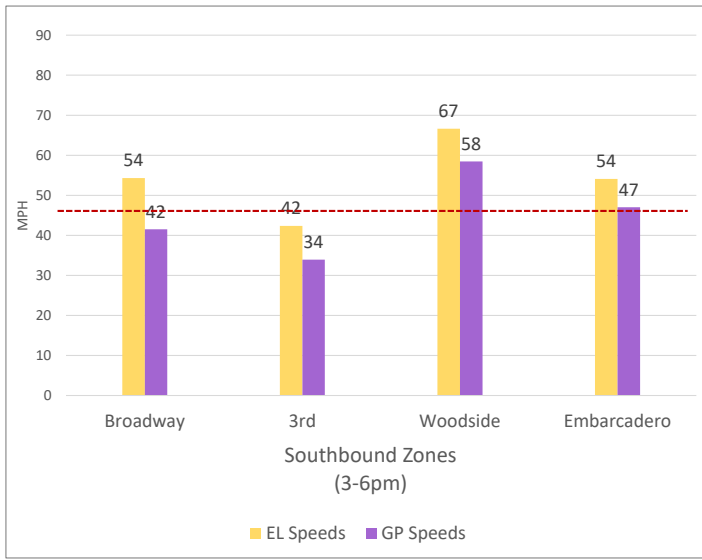
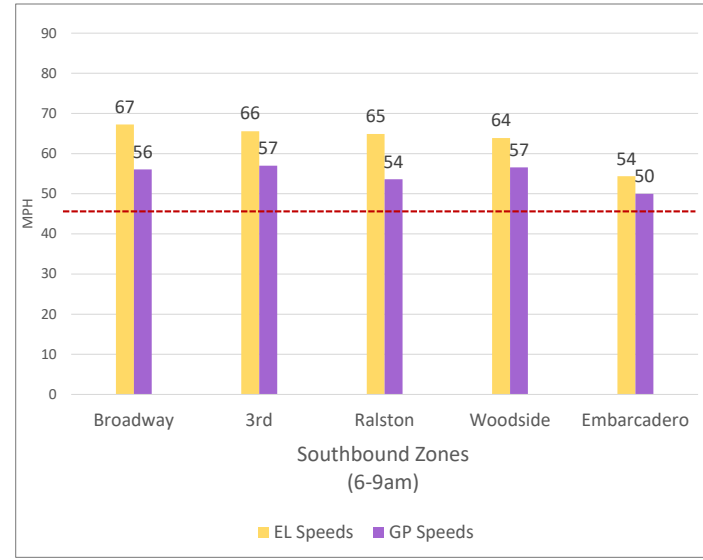
Chart Legend

- Current EL Volume (Feb 08)
- Current GP Volume (Feb 08)
- Current EL Speed (Feb 08)
- Current GP Speed (Feb 08)
- Current Toll (Feb 08)
- Max Operational Toll
- Historic EL Volume (Feb 01)
- Historic GP Volume (Feb 01)
- Historic EL Speed (Feb 01)
- Historic GP Speed (Feb 01)
- Historic Toll (Feb 01)
- Targeted Min. LOS - 45mph

DATA DATE: Week of 12/9 - 12/13

3. Toll System Performance

Speed Differential - Directional Peak Periods



-- Targeted Min. LOS - 45mph