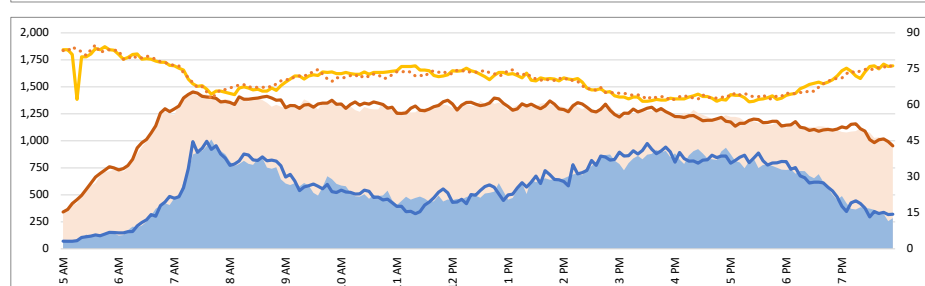
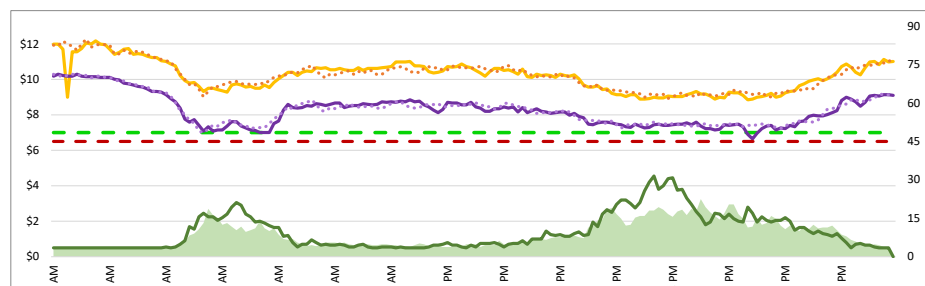
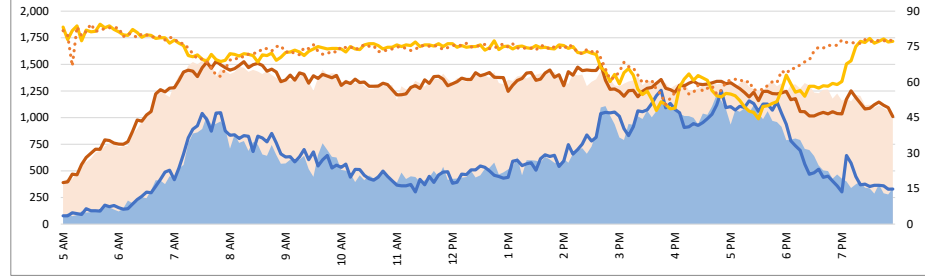
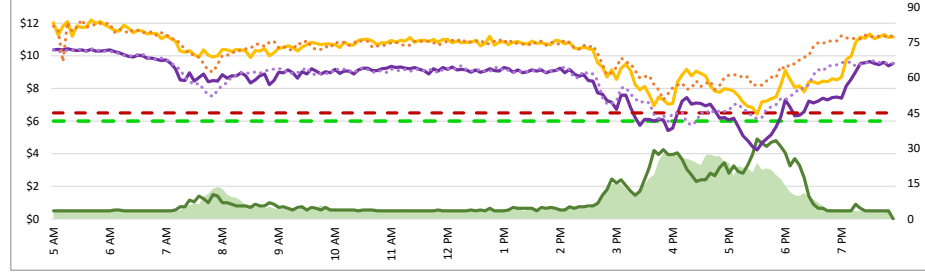
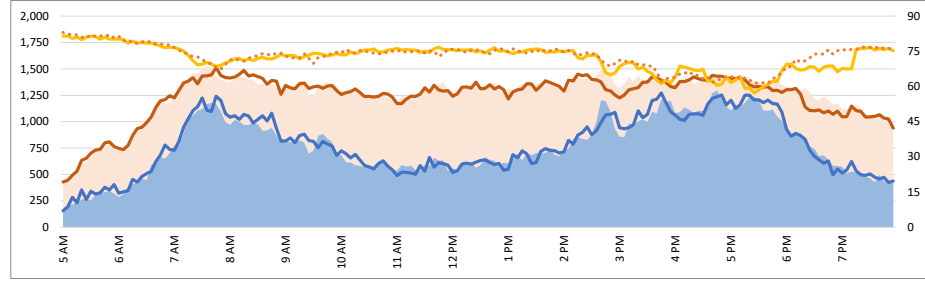
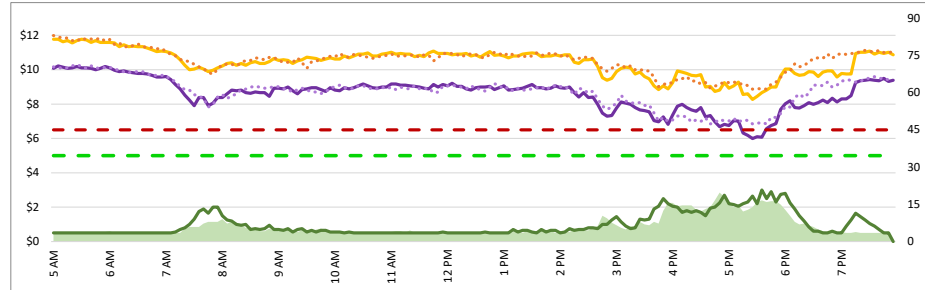


1. Lane Performance

Average Speeds, Volumes & Tolls - Current (Week of 9/2 - 9/6) vs Historic (Week of 8/26 - 8/30)



3740 - Broadway SB

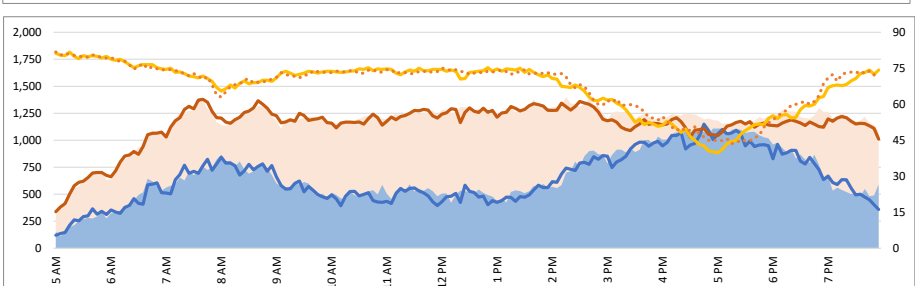
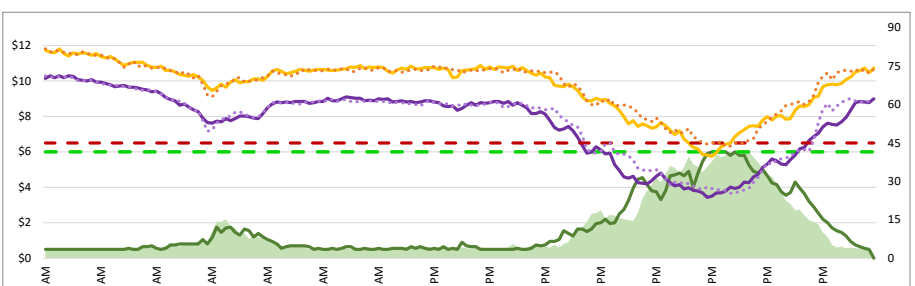
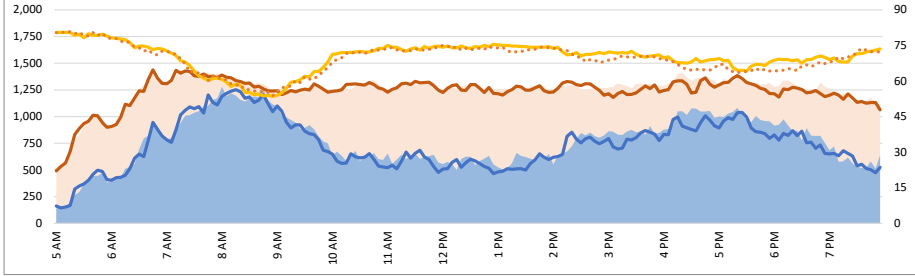
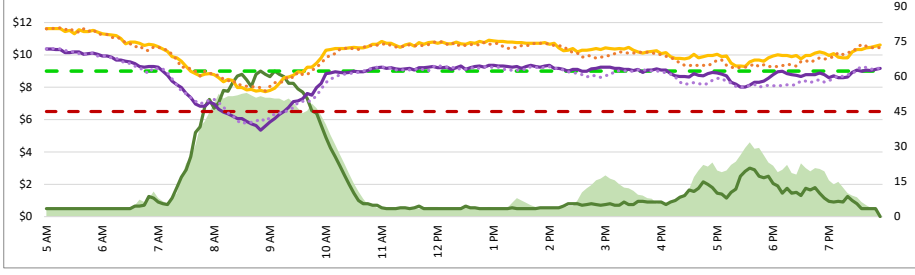
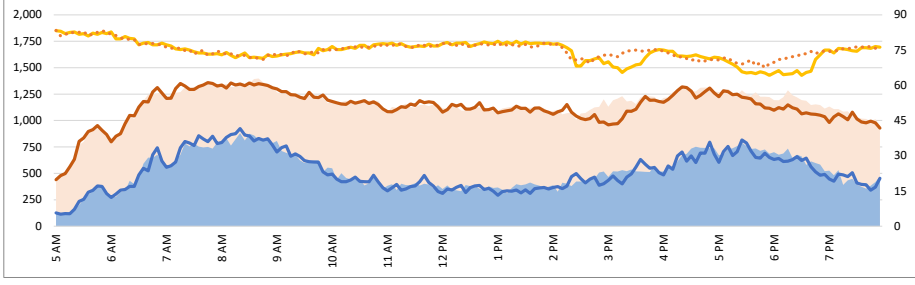
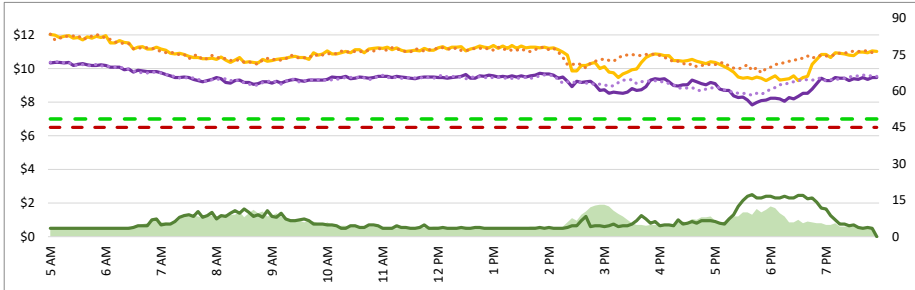
3850 - I-380 NB

3750 - 3rd SB

3840 - Broadway NB

3760 - Ralston SB

3830 - SR 92 NB



Map of SM101 Corridor (Not To Scale) DATA DATE: Week of 9/2 - 9/6

SM101 Express Lanes Corridor Map

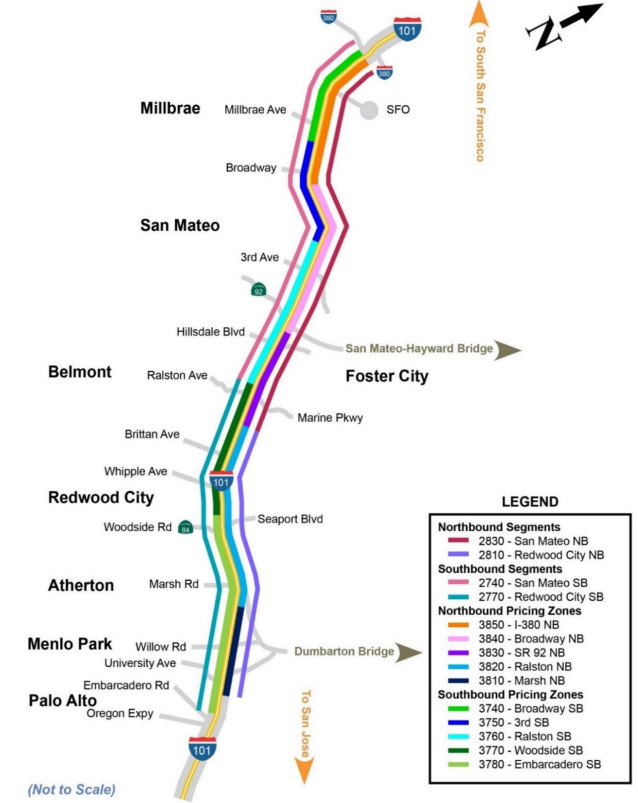
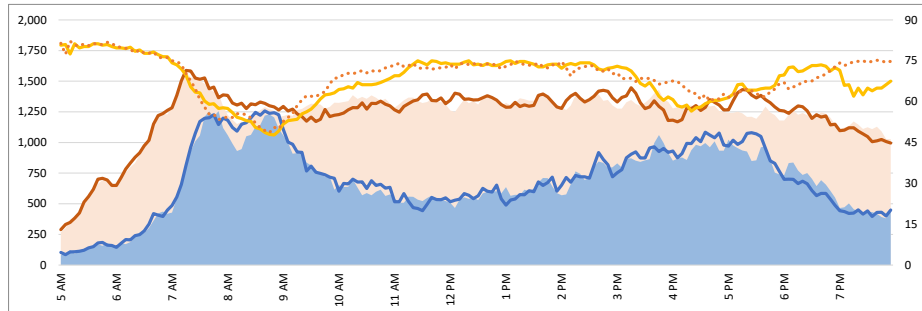
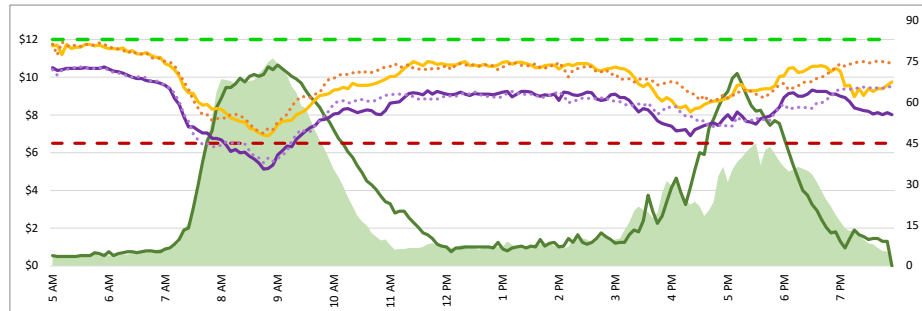
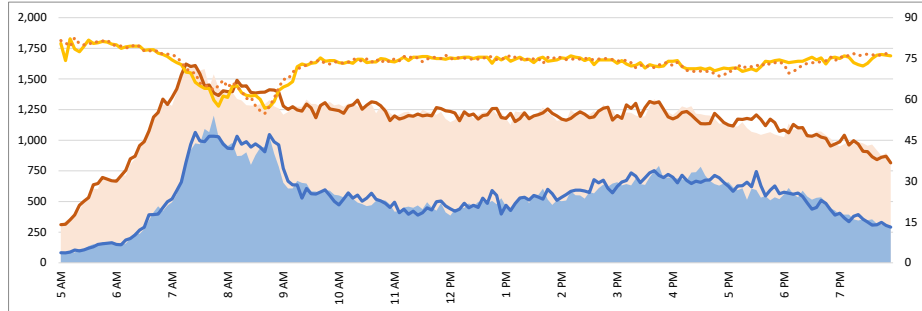
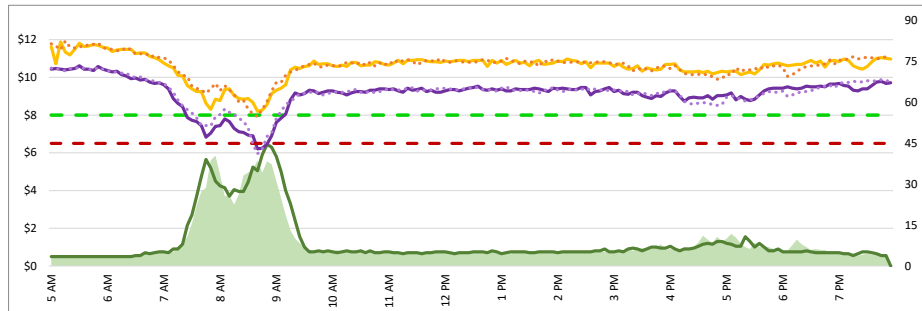


Chart Legend

Current EL Volume (Feb 08)	Historic EL Volume (Feb 01)
Current GP Volume (Feb 08)	Historic GP Volume (Feb 01)
Current EL Speed (Feb 08)	Historic EL Speed (Feb 01)
Current GP Speed (Feb 08)	Historic GP Speed (Feb 01)
Current Toll (Feb 08)	Historic Toll (Feb 01)
Max Operational Toll	Targeted Min. LOS - 45mph

1. Lane Performance

Average Speeds, Volumes & Tolls - Current (Week of 9/2 - 9/6) vs Historic (Week of 8/26 - 8/30)

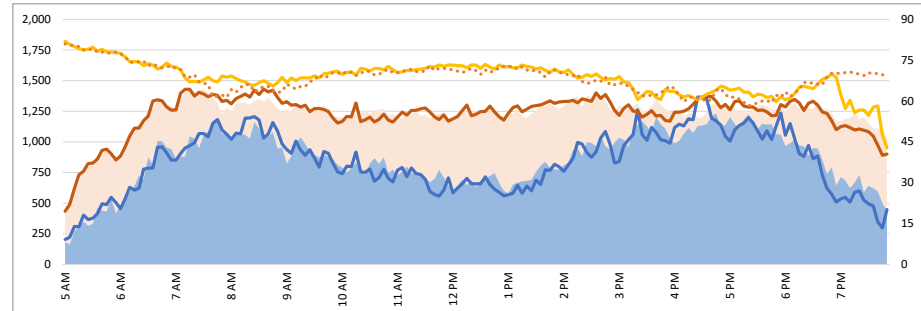
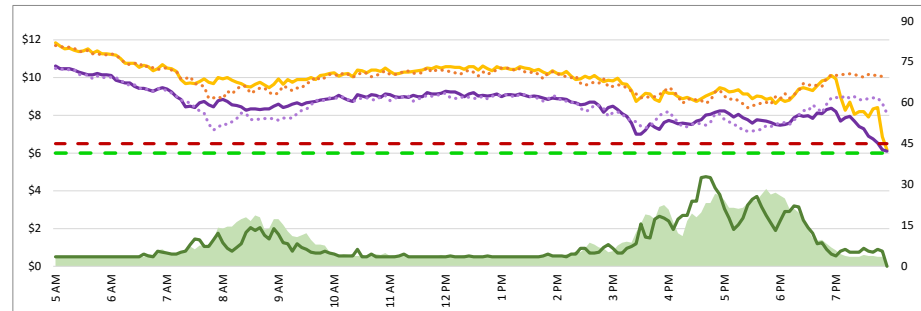
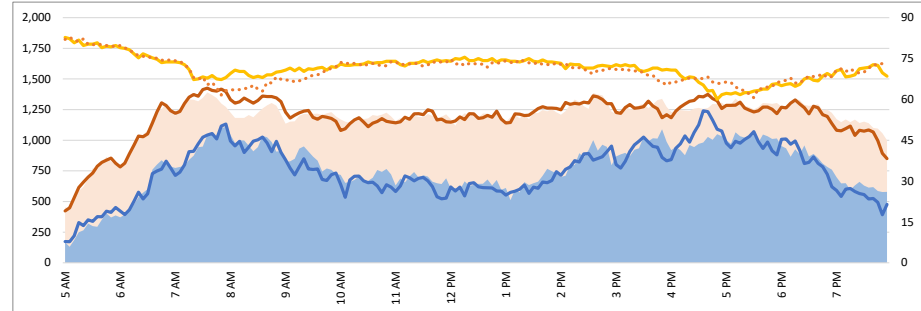
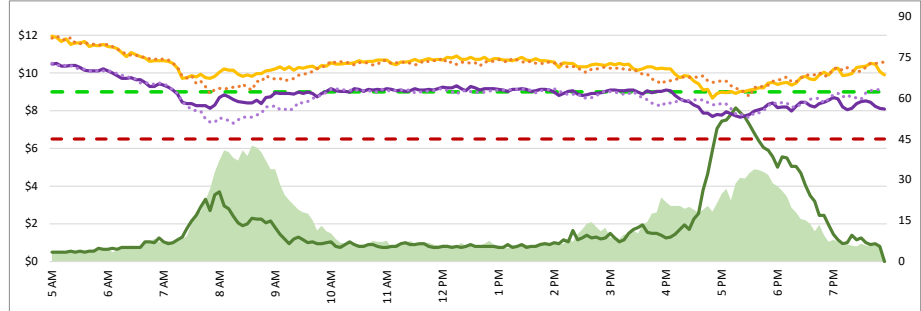


3770 - Woodside SB

3820 - Ralston NB

3780 - Embarcadero SB

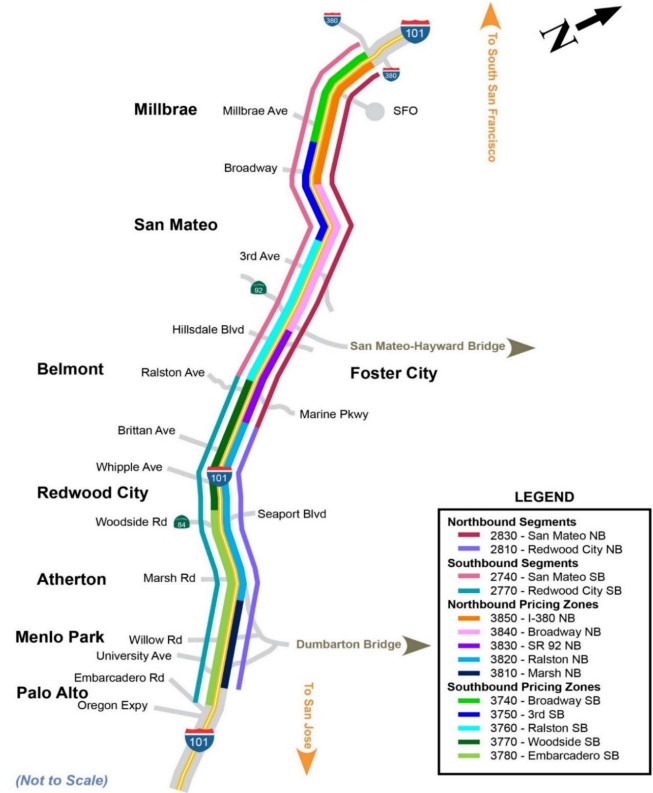
3810 - Marsh NB



DATA DATE: Week of 9/2 - 9/6

Map of SM101 Corridor (Not To Scale)

SM101 Express Lanes Corridor Map



**LEGEND**

<span style="color: red;">—</span>	2830 - San Mateo NB
<span style="color: blue;">—</span>	2810 - Redwood City NB
<span style="color: green;">—</span>	2740 - San Mateo SB
<span style="color: orange;">—</span>	2770 - Redwood City SB
<span style="color: yellow;">—</span>	3850 - I-380 NB
<span style="color: purple;">—</span>	3840 - Broadway NB
<span style="color: brown;">—</span>	3830 - SR 92 NB
<span style="color: pink;">—</span>	3820 - Ralston NB
<span style="color: grey;">—</span>	3810 - Marsh NB
<span style="color: lightgreen;">—</span>	3740 - Broadway SB
<span style="color: lightblue;">—</span>	3750 - 3rd SB
<span style="color: lightorange;">—</span>	3760 - Ralston SB
<span style="color: lightyellow;">—</span>	3770 - Woodside SB
<span style="color: lightpurple;">—</span>	3780 - Embarcadero SB

(Not to Scale)

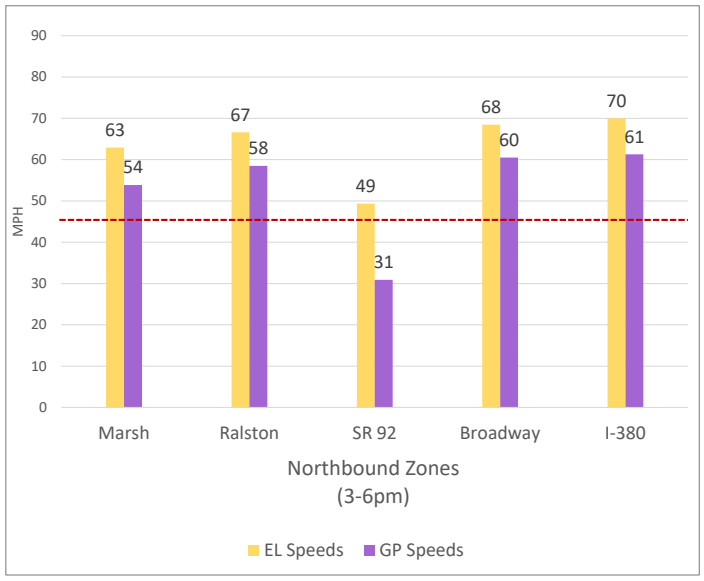
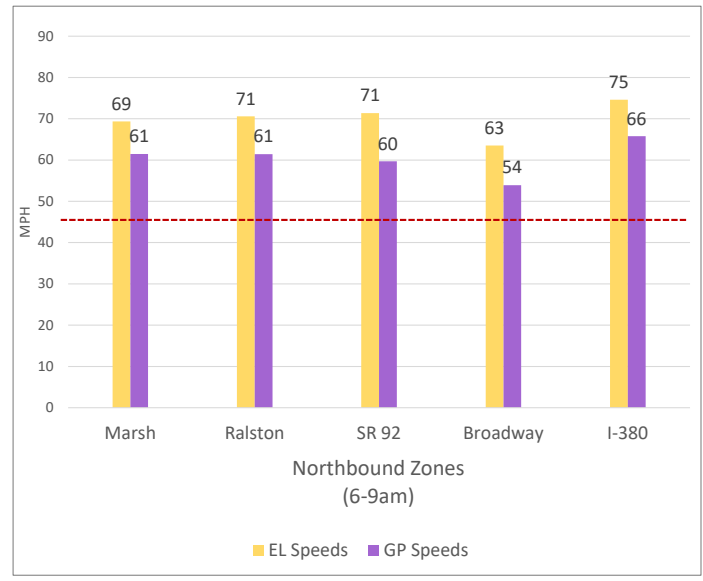
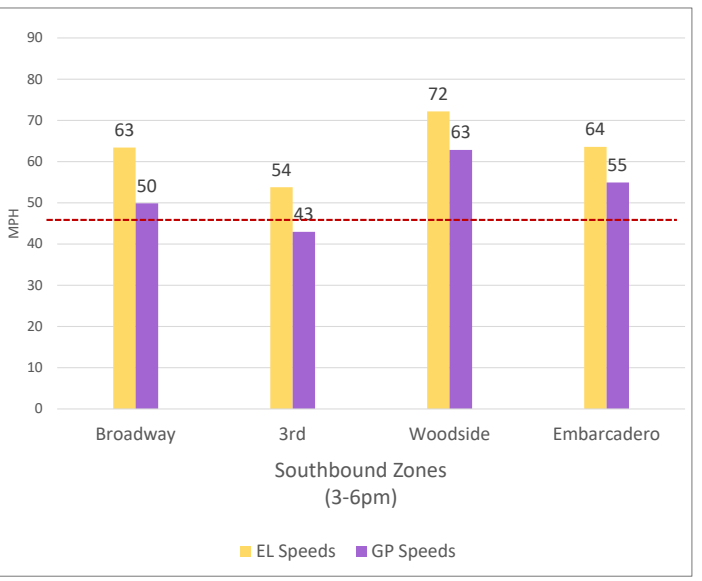
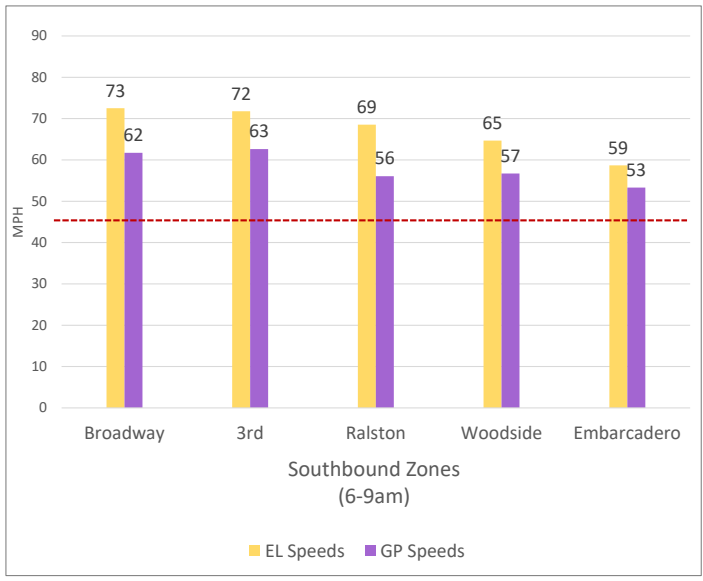
Chart Legend

<span style="color: blue;">—</span>	Current EL Volume (Feb 08)	<span style="color: blue;">—</span>	Historic EL Volume (Feb 01)
<span style="color: orange;">—</span>	Current GP Volume (Feb 08)	<span style="color: orange;">—</span>	Historic GP Volume (Feb 01)
<span style="color: yellow;">—</span>	Current EL Speed (Feb 08)	<span style="color: yellow;">—</span>	Historic EL Speed (Feb 01)
<span style="color: purple;">—</span>	Current GP Speed (Feb 08)	<span style="color: purple;">—</span>	Historic GP Speed (Feb 01)
<span style="color: green;">—</span>	Current Toll (Feb 08)	<span style="color: green;">—</span>	Historic Toll (Feb 01)
<span style="color: red;">- - -</span>	Max Operational Toll	<span style="color: red;">- - -</span>	Targeted Min. LOS - 45mph

DATA DATE: Week of 9/2 - 9/6

3. Toll System Performance

Speed Differential - Directional Peak Periods



-- Targeted Min. LOS - 45mph