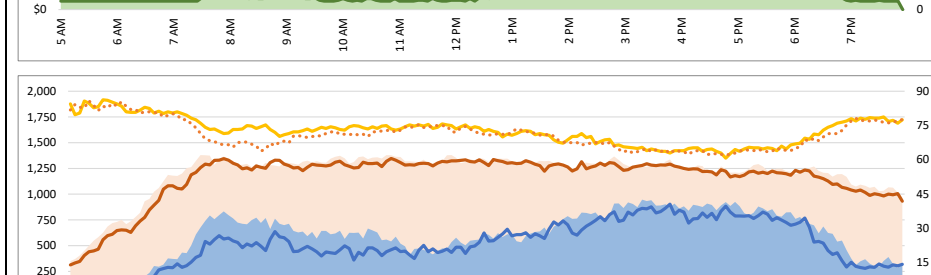
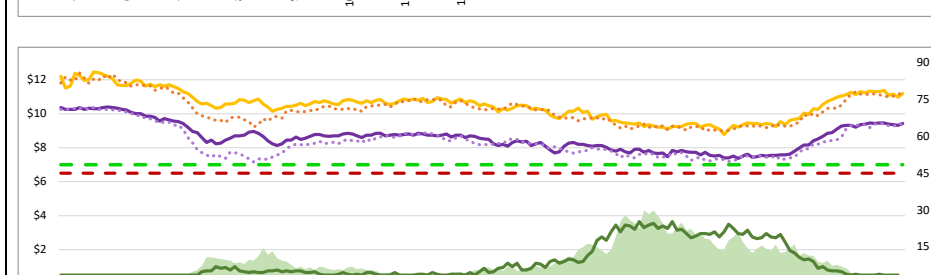
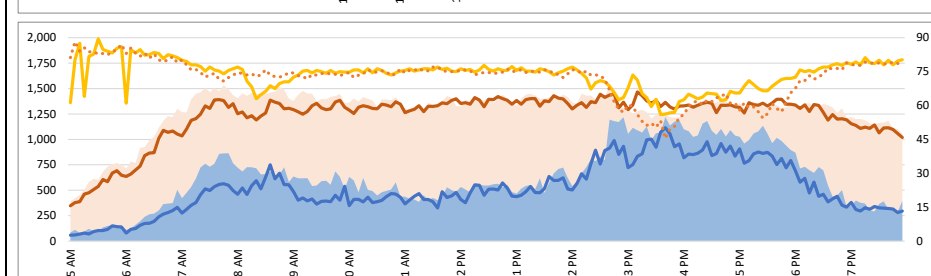
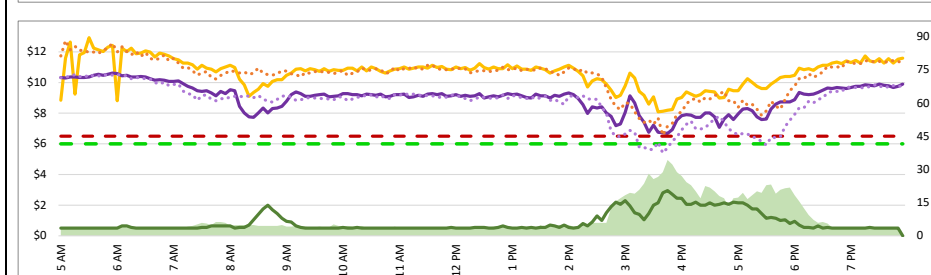
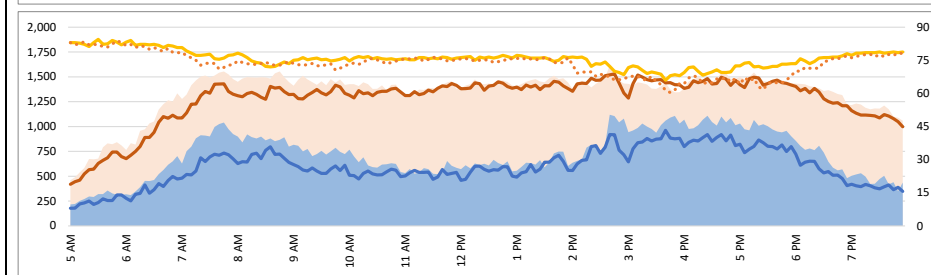
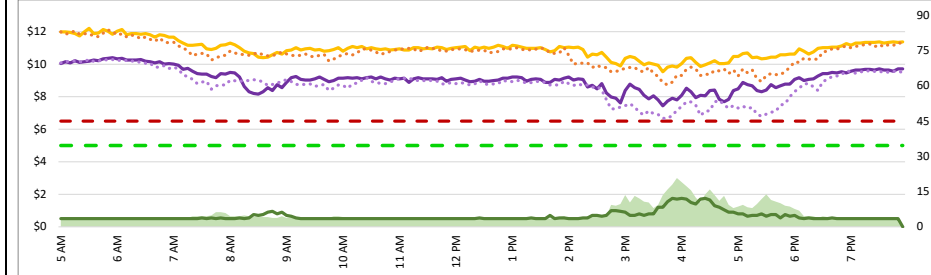


1. Lane Performance

Average Speeds, Volumes & Tolls - Current (Week of 7/1 - 7/5) vs Historic (Week of 6/24 - 6/28)



3740 - Broadway SB

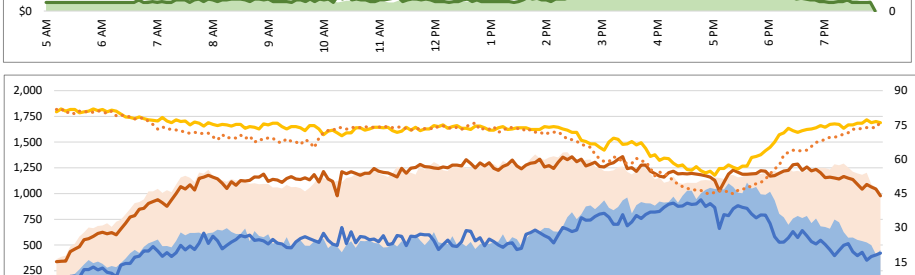
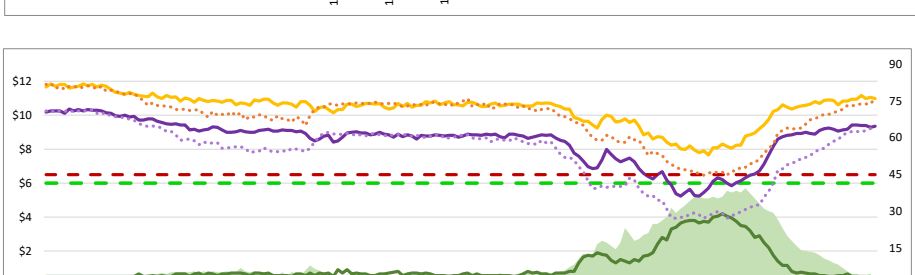
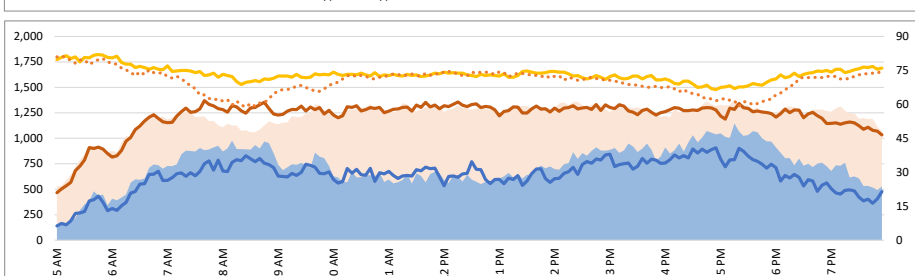
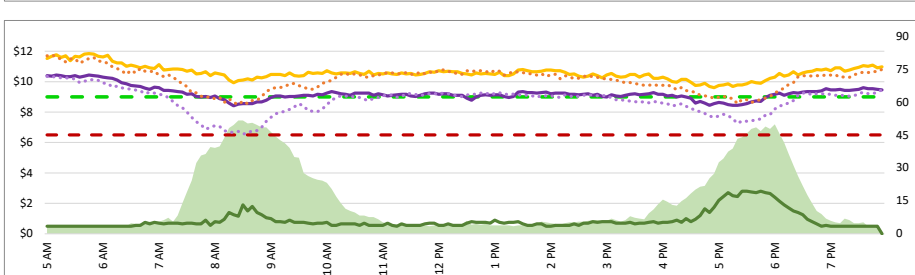
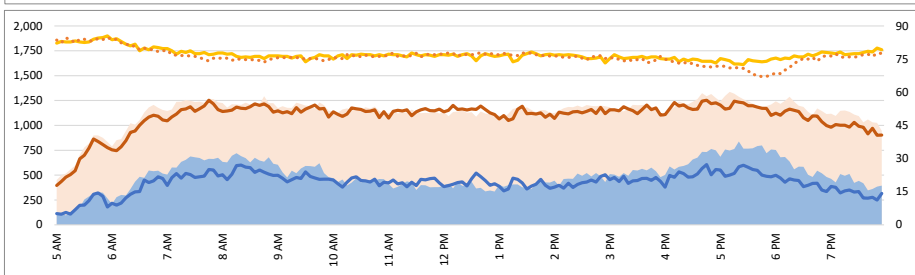
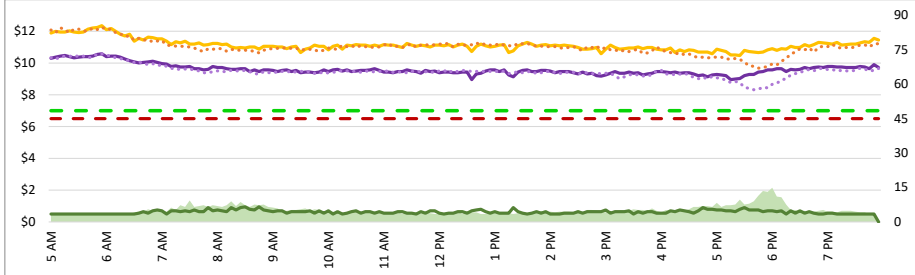
3850 - I-380 NB

3750 - 3rd SB

3840 - Broadway NB

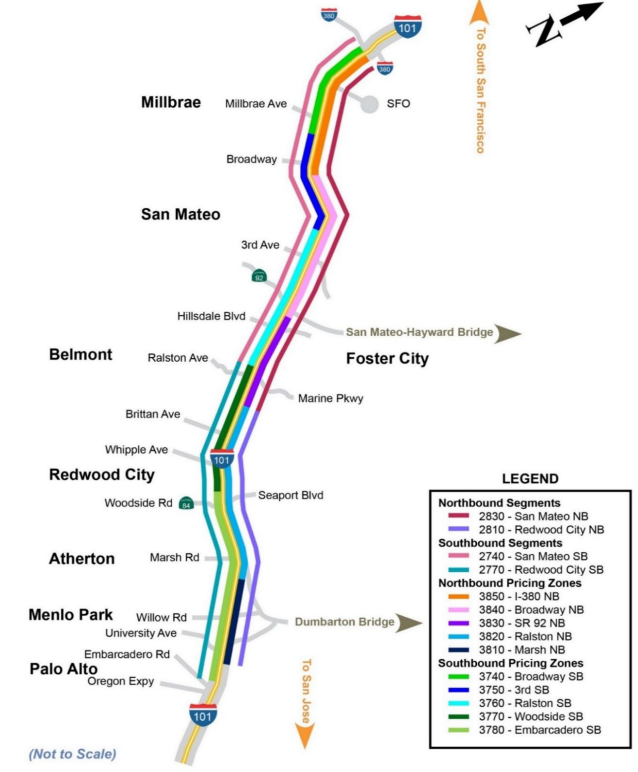
3760 - Ralston SB

3830 - SR 92 NB



Map of SM101 Corridor (Not To Scale) DATA DATE: Week of 7/1 - 7/5

SM101 Express Lanes Corridor Map



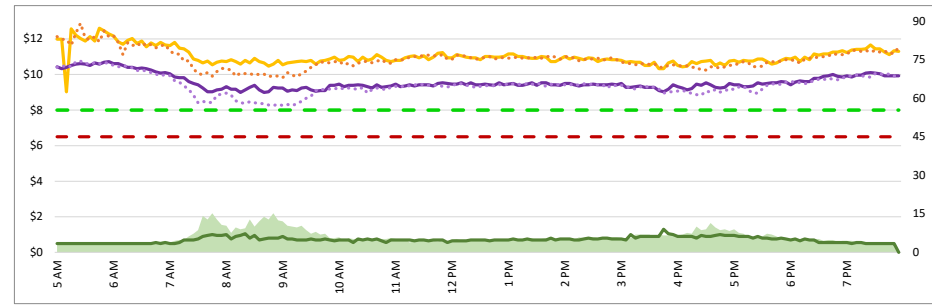
- LEGEND**
- Northbound Segments**
    - 2830 - San Mateo NB
    - 2810 - Redwood City NB
  - Southbound Segments**
    - 2740 - San Mateo SB
    - 2770 - Redwood City SB
  - Northbound Pricing Zones**
    - 3850 - I-380 NB
    - 3840 - Broadway NB
    - 3830 - SR 92 NB
    - 3820 - Ralston NB
    - 3810 - Marsh NB
  - Southbound Pricing Zones**
    - 3740 - Broadway SB
    - 3750 - 3rd SB
    - 3760 - Ralston SB
    - 3770 - Woodside SB
    - 3780 - Embarcadero SB

Chart Legend

- Current EL Volume (Feb 08)
- Current GP Volume (Feb 08)
- Current EL Speed (Feb 08)
- Current GP Speed (Feb 08)
- Current Toll (Feb 08)
- Max Operational Toll
- Historic EL Volume (Feb 01)
- Historic GP Volume (Feb 01)
- Historic EL Speed (Feb 01)
- Historic GP Speed (Feb 01)
- Historic Toll (Feb 01)
- Targeted Min. LOS - 45mph

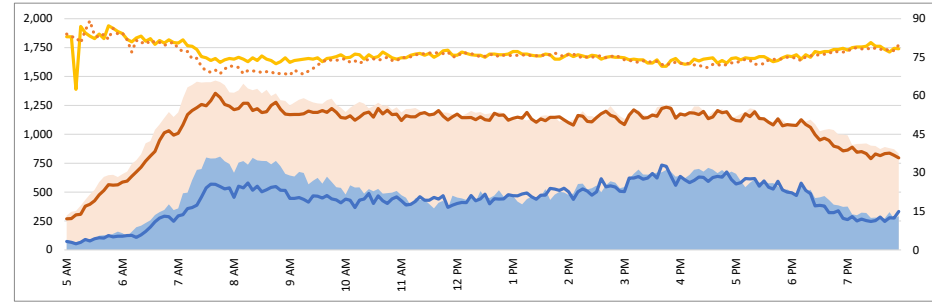
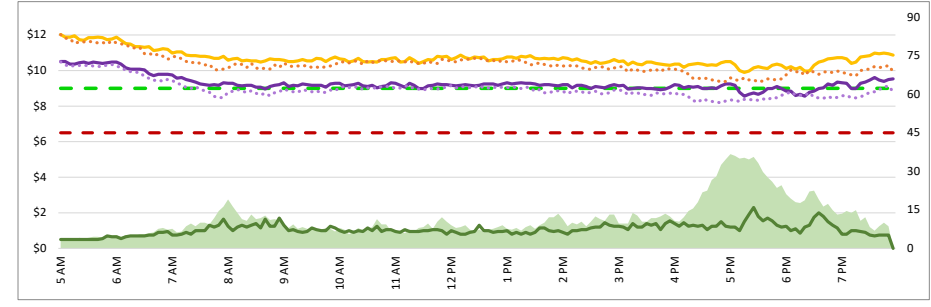
1. Lane Performance

Average Speeds, Volumes & Tolls - Current (Week of 7/1 - 7/5) vs Historic (Week of 6/24 - 6/28)



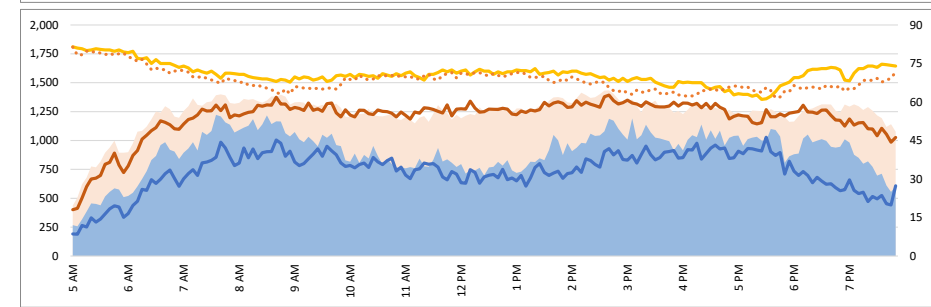
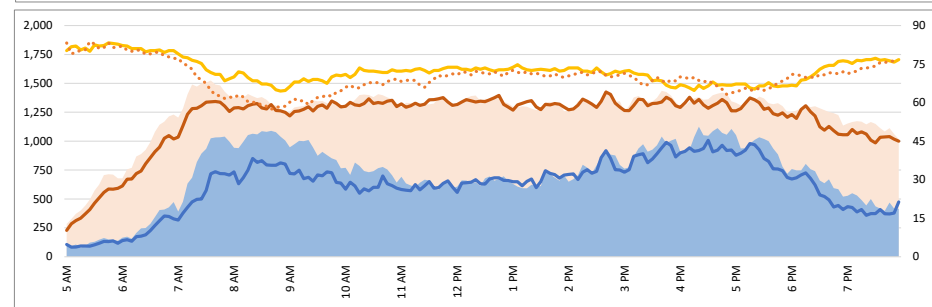
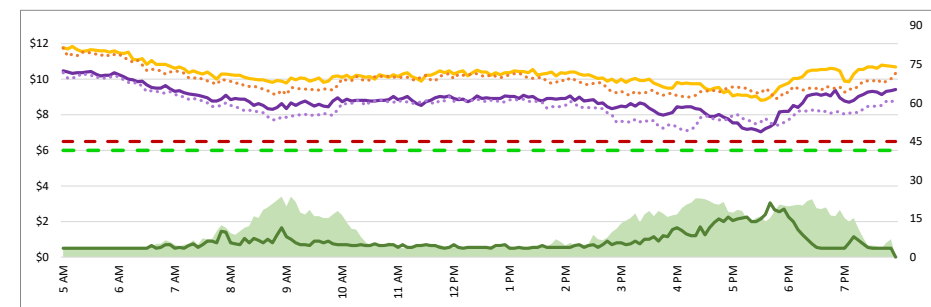
3770 - Woodside SB

3820 - Ralston NB



3780 - Embarcadero SB

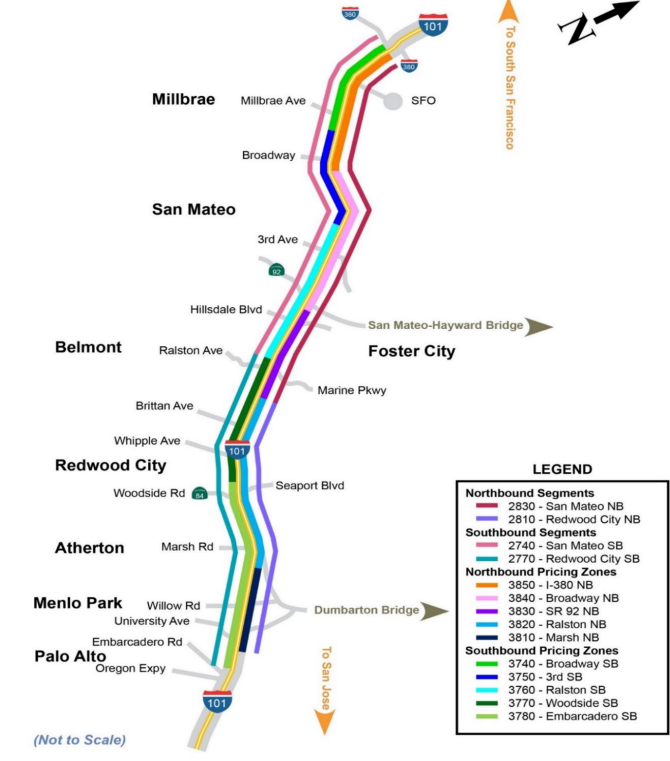
3810 - Marsh NB



DATA DATE: Week of 7/1 - 7/5

Map of SM101 Corridor (Not To Scale)

SM101 Express Lanes Corridor Map



(Not to Scale)

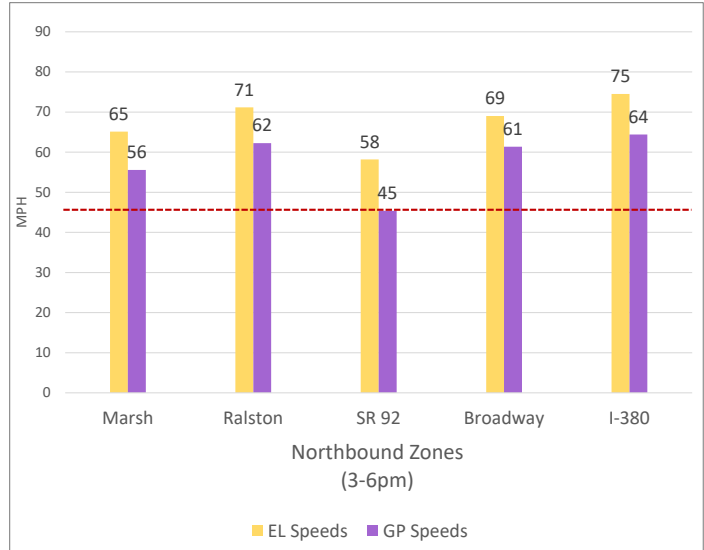
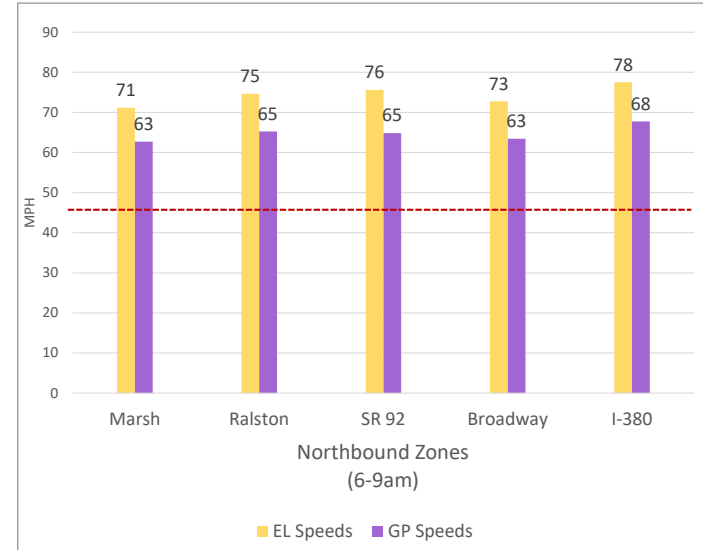
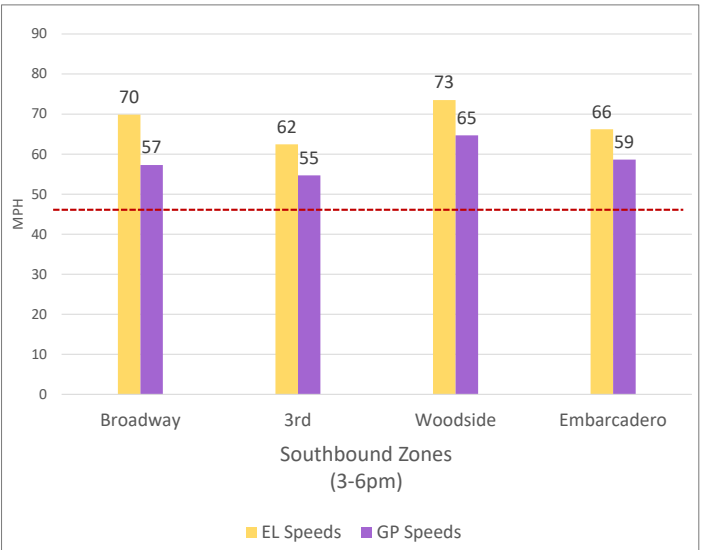
Chart Legend

- Current EL Volume (Feb 08)
- Current GP Volume (Feb 08)
- Current EL Speed (Feb 08)
- Current GP Speed (Feb 08)
- Current Toll (Feb 08)
- - - Max Operational Toll
- Historic EL Volume (Feb 01)
- Historic GP Volume (Feb 01)
- Historic EL Speed (Feb 01)
- Historic GP Speed (Feb 01)
- Historic Toll (Feb 01)
- - - Targeted Min. LOS - 45mph

DATA DATE: **Week of 7/1 - 7/5**

3. Toll System Performance

Speed Differential - Directional Peak Periods



- - Targeted Min. LOS - 45mph