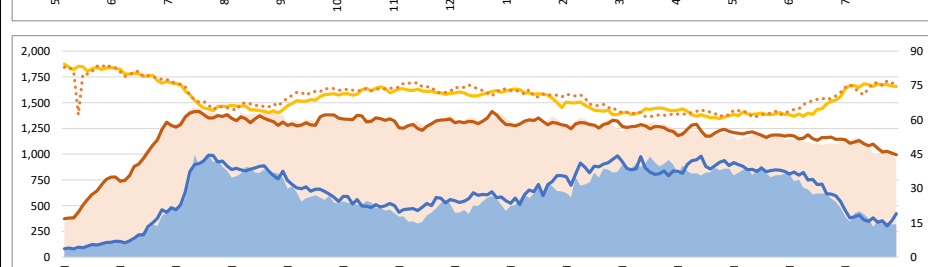
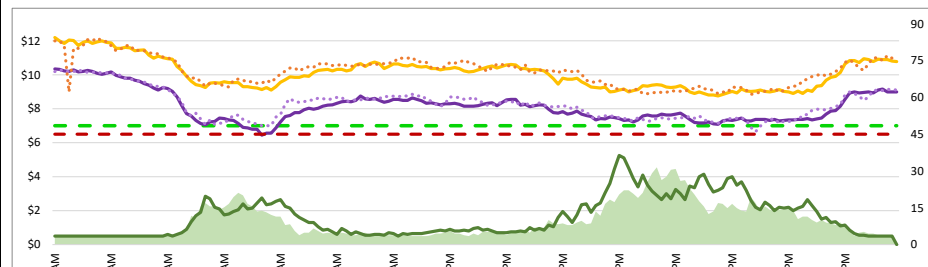
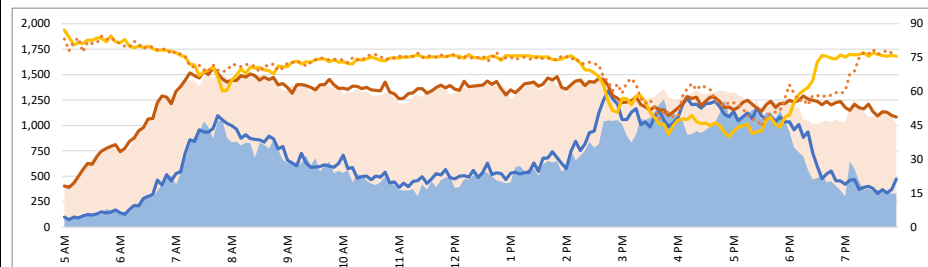
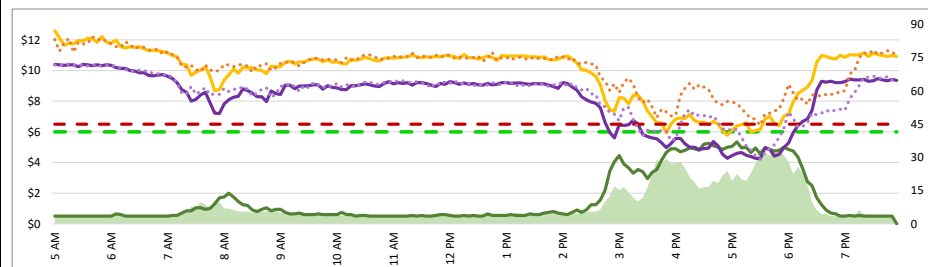
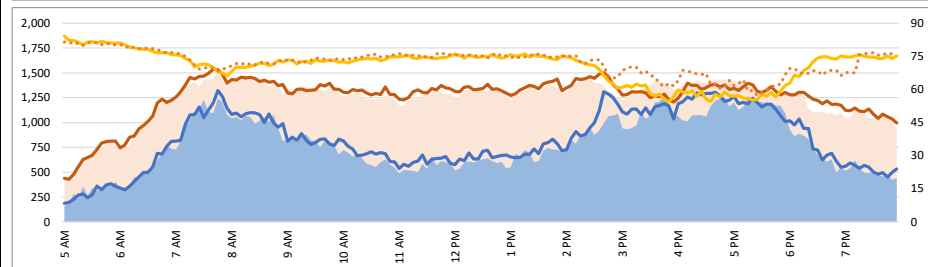
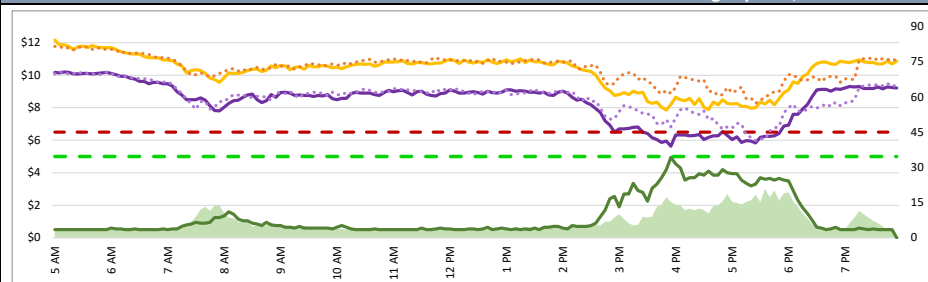


1. Lane Performance

Average Speeds, Volumes & Tolls - Current (Week of 9/9 - 9/13) vs Historic (Week of 9/2 - 9/6)



3740 - Broadway SB

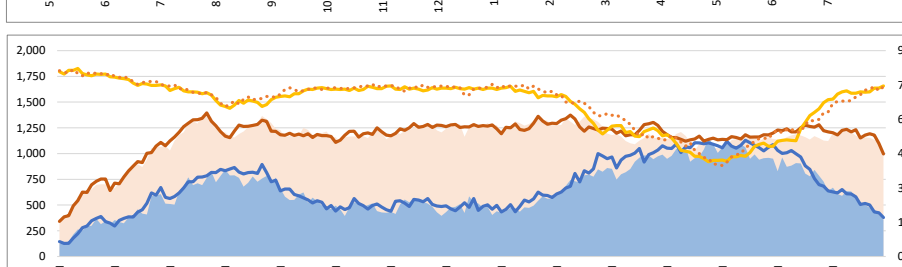
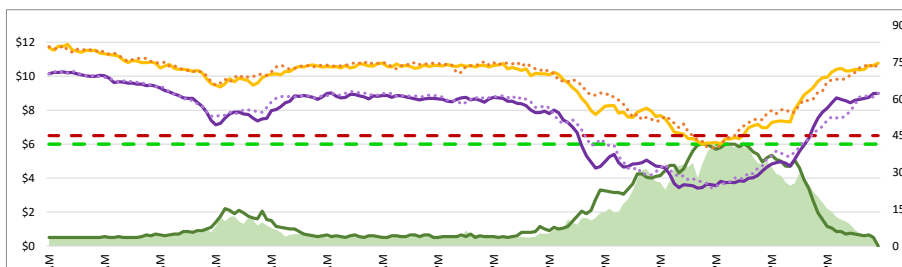
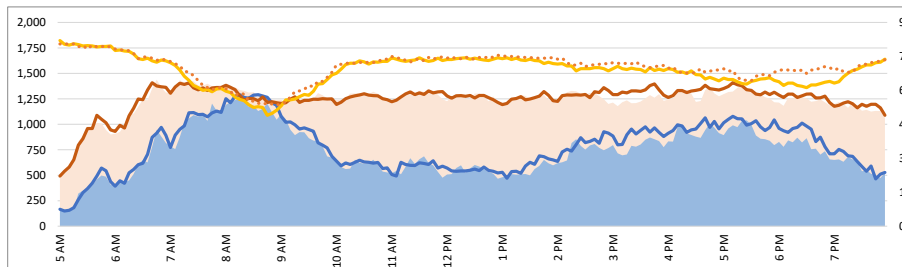
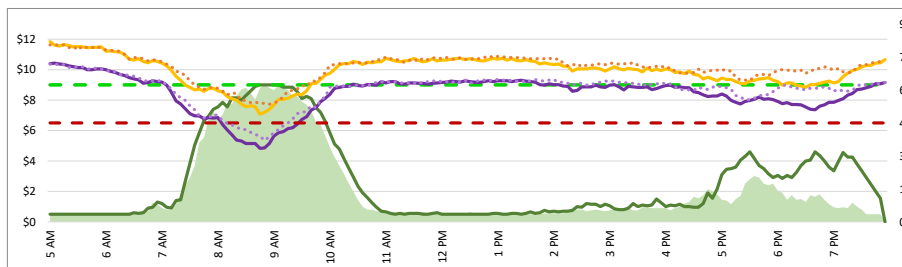
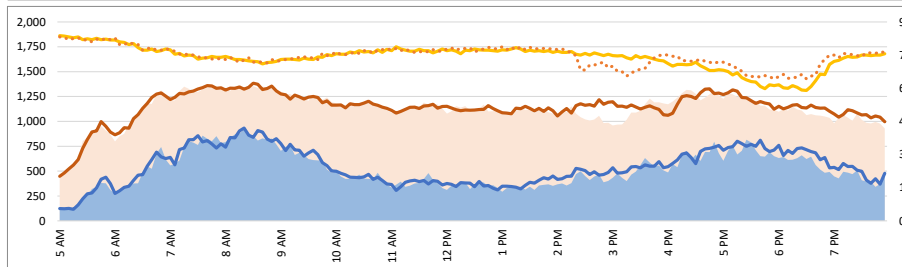
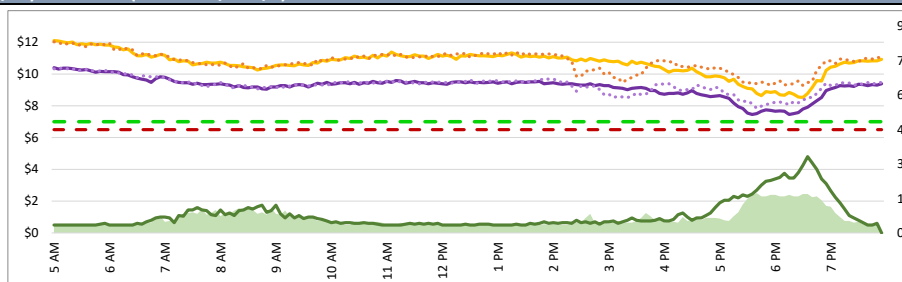
3850 - I-380 NB

3750 - 3rd SB

3840 - Broadway NB

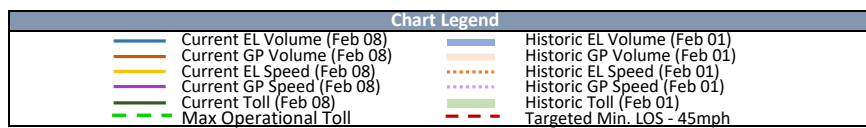
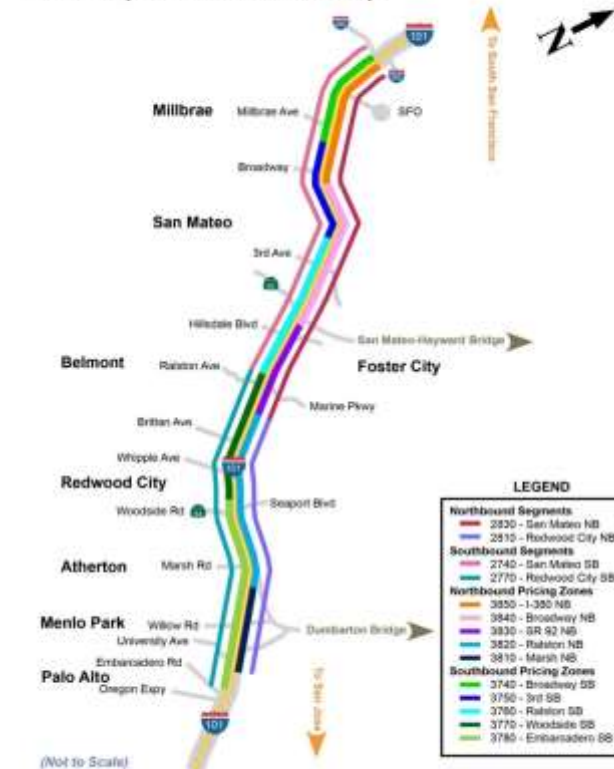
3760 - Ralston SB

3830 - SR 92 NB



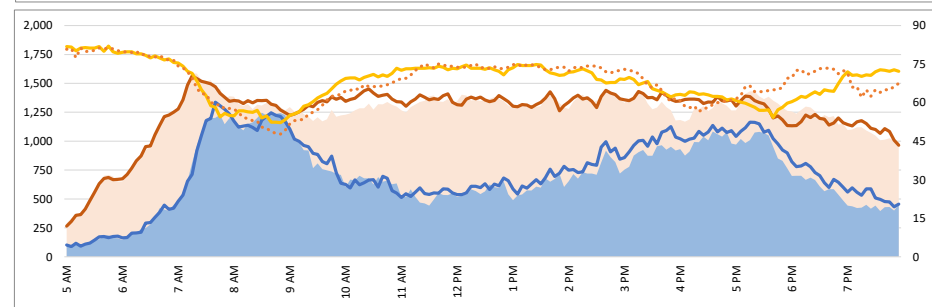
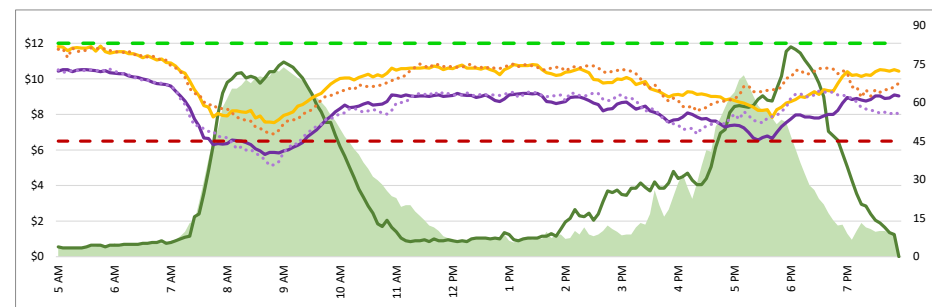
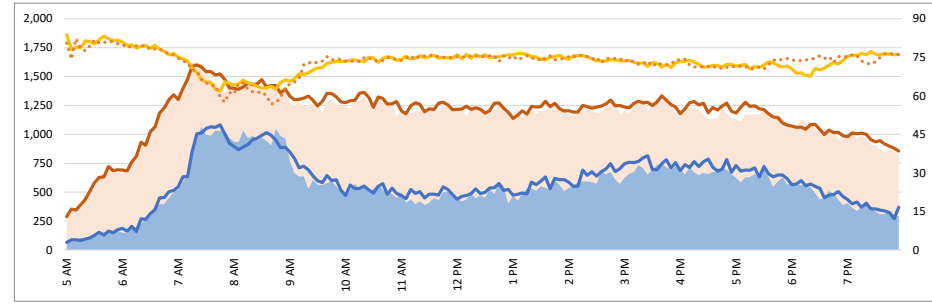
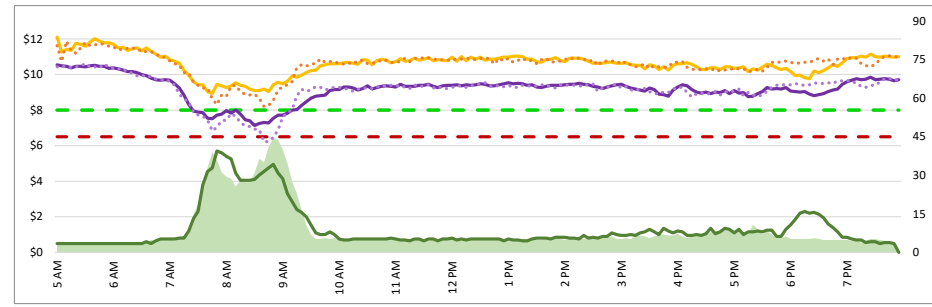
Map of SM101 Corridor (Not To Scale) DATA DATE: Week of 9/9 - 9/13

SM101 Express Lanes Corridor Map



1. Lane Performance

Average Speeds, Volumes & Tolls - Current (Week of 9/9 - 9/13) vs Historic (Week of 9/2 - 9/6)

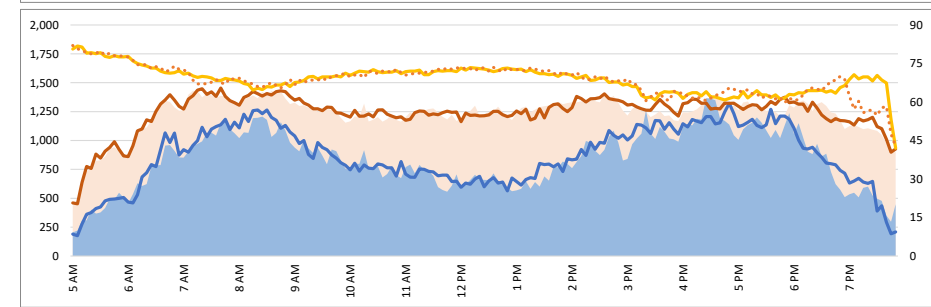
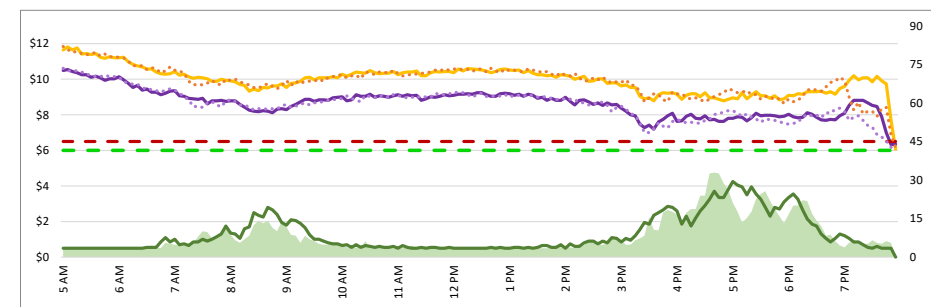
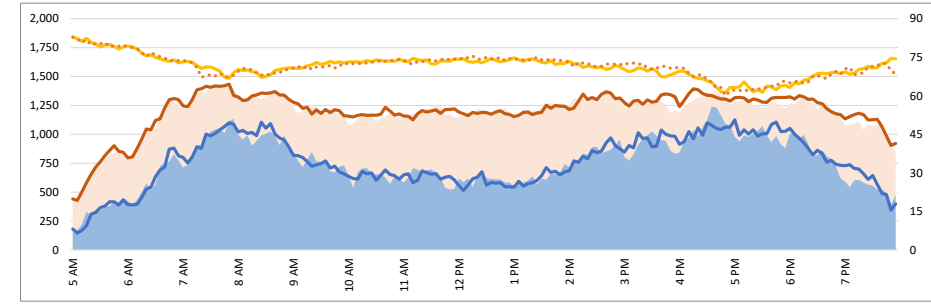
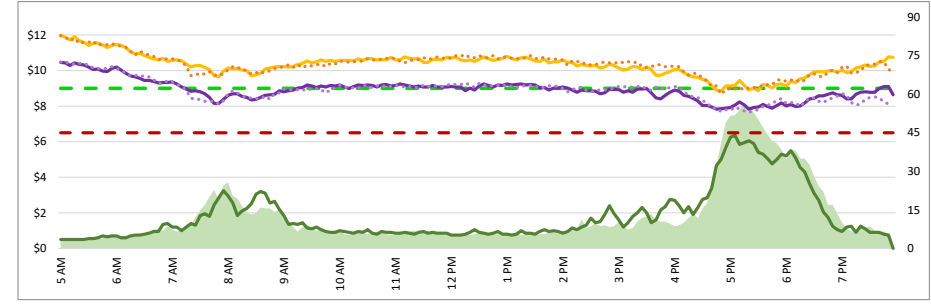


3770 - Woodside SB

3820 - Ralston NB

3780 - Embarcadero SB

3810 - Marsh NB



Map of SM101 Corridor (Not To Scale) DATA DATE: Week of 9/9 - 9/13

SM101 Express Lanes Corridor Map



**LEGEND**

<span style="color: red;">—</span>	2830 - San Mateo NB	<span style="color: blue;">—</span>	3850 - 380 NB
<span style="color: blue;">—</span>	2810 - Redwood City NB	<span style="color: orange;">—</span>	3840 - Broadway NB
<span style="color: green;">—</span>	2770 - Redwood City SB	<span style="color: purple;">—</span>	3830 - SR 92 NB
<span style="color: orange;">—</span>	3850 - 380 NB	<span style="color: green;">—</span>	3820 - Ralston NB
<span style="color: purple;">—</span>	3830 - SR 92 NB	<span style="color: red;">—</span>	3810 - Marsh NB
<span style="color: green;">—</span>	3820 - Ralston NB	<span style="color: blue;">—</span>	3790 - 3rd SB
<span style="color: red;">—</span>	3810 - Marsh NB	<span style="color: orange;">—</span>	3780 - Embarcadero SB
<span style="color: blue;">—</span>	3790 - 3rd SB	<span style="color: purple;">—</span>	3770 - Woodside SB
<span style="color: orange;">—</span>	3780 - Embarcadero SB	<span style="color: green;">—</span>	3760 - Embarcadero SB

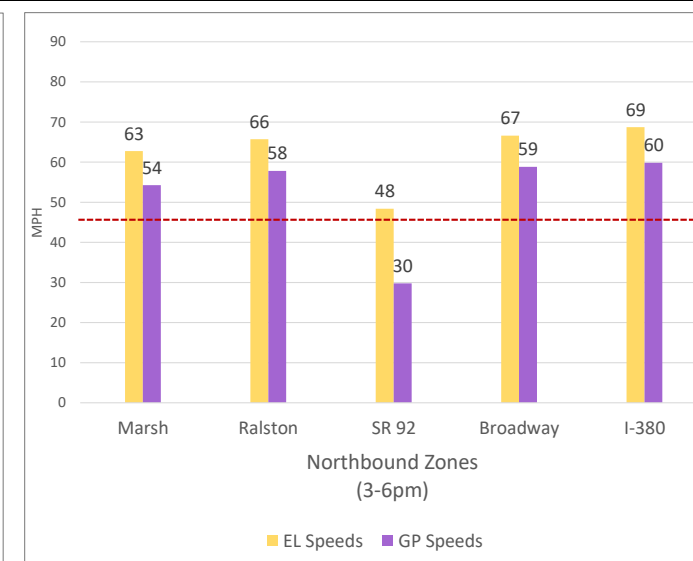
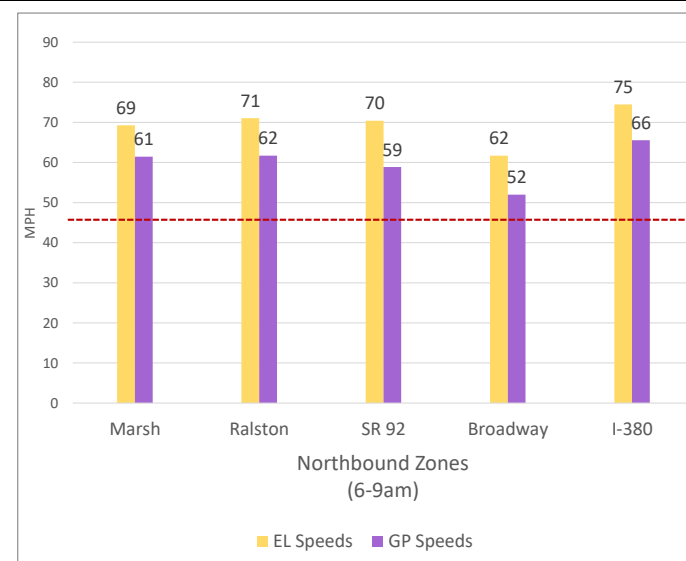
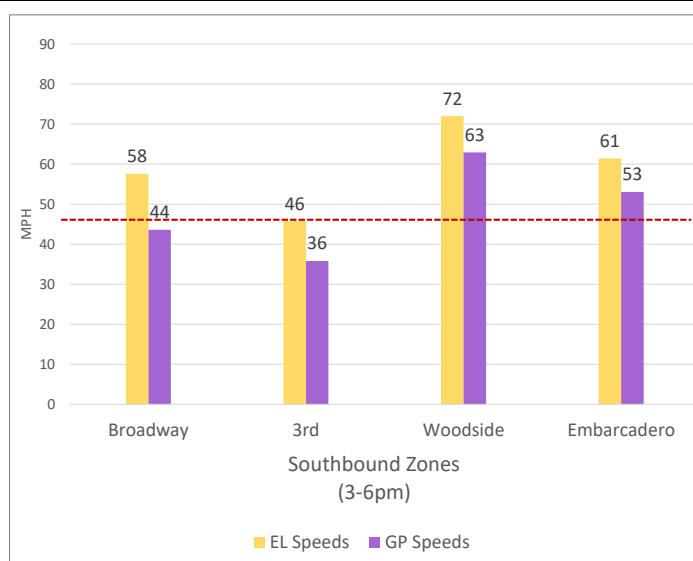
**Chart Legend**

<span style="color: blue;">—</span>	Current EL Volume (Feb 08)	<span style="color: blue;">—</span>	Historic EL Volume (Feb 01)
<span style="color: orange;">—</span>	Current GP Volume (Feb 08)	<span style="color: orange;">—</span>	Historic GP Volume (Feb 01)
<span style="color: purple;">—</span>	Current EL Speed (Feb 08)	<span style="color: purple;">—</span>	Historic EL Speed (Feb 01)
<span style="color: green;">—</span>	Current GP Speed (Feb 08)	<span style="color: green;">—</span>	Historic GP Speed (Feb 01)
<span style="color: red;">—</span>	Current Toll (Feb 08)	<span style="color: red;">—</span>	Historic Toll (Feb 01)
<span style="color: green;">—</span>	Max Operational Toll	<span style="color: red;">—</span>	Targeted Min. LOS - 45mph

DATA DATE: **Week of 9/9 - 9/13**

3. Toll System Performance

Speed Differential - Directional Peak Periods



-- Targeted Min. LOS - 45mph