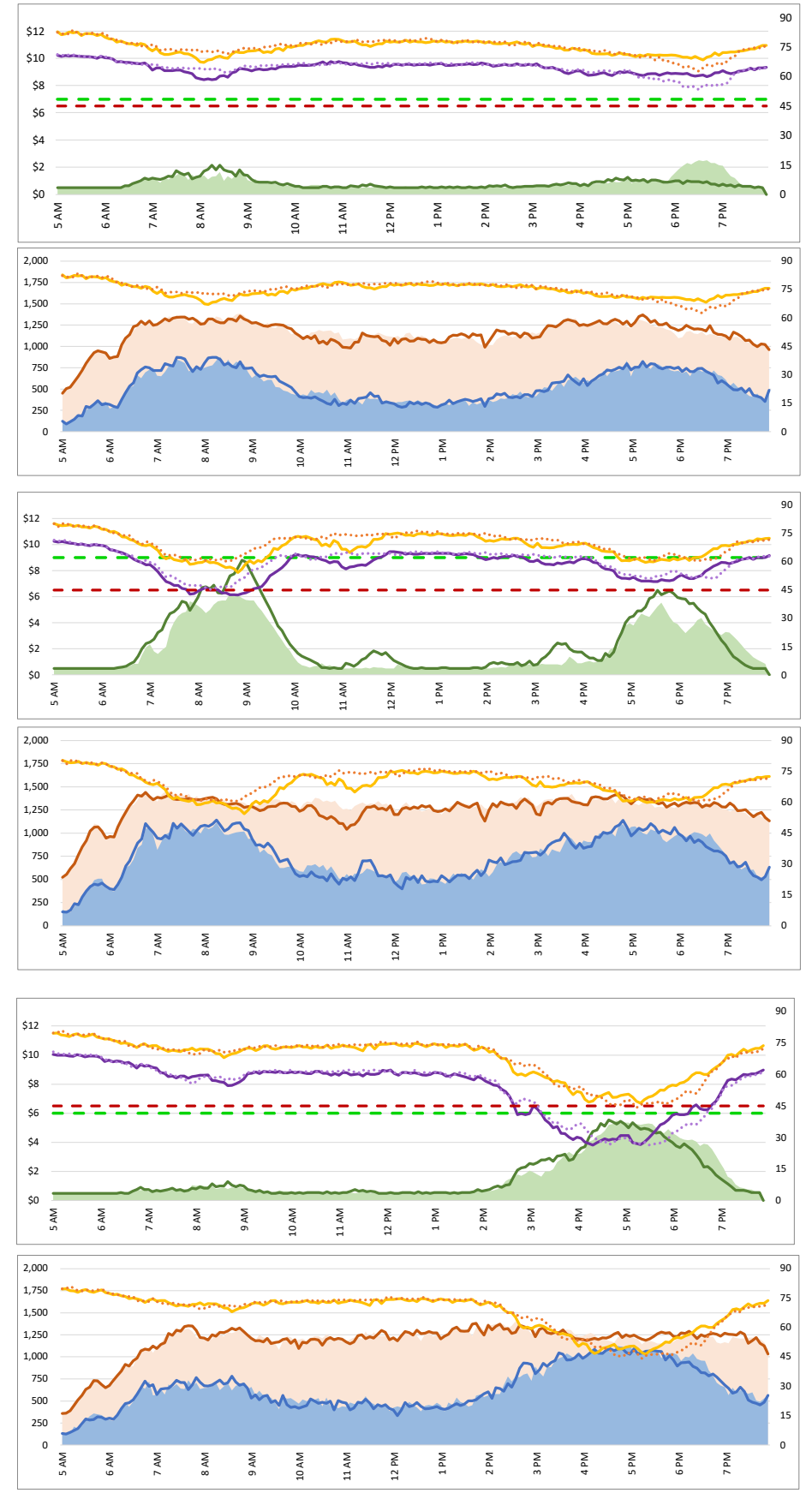
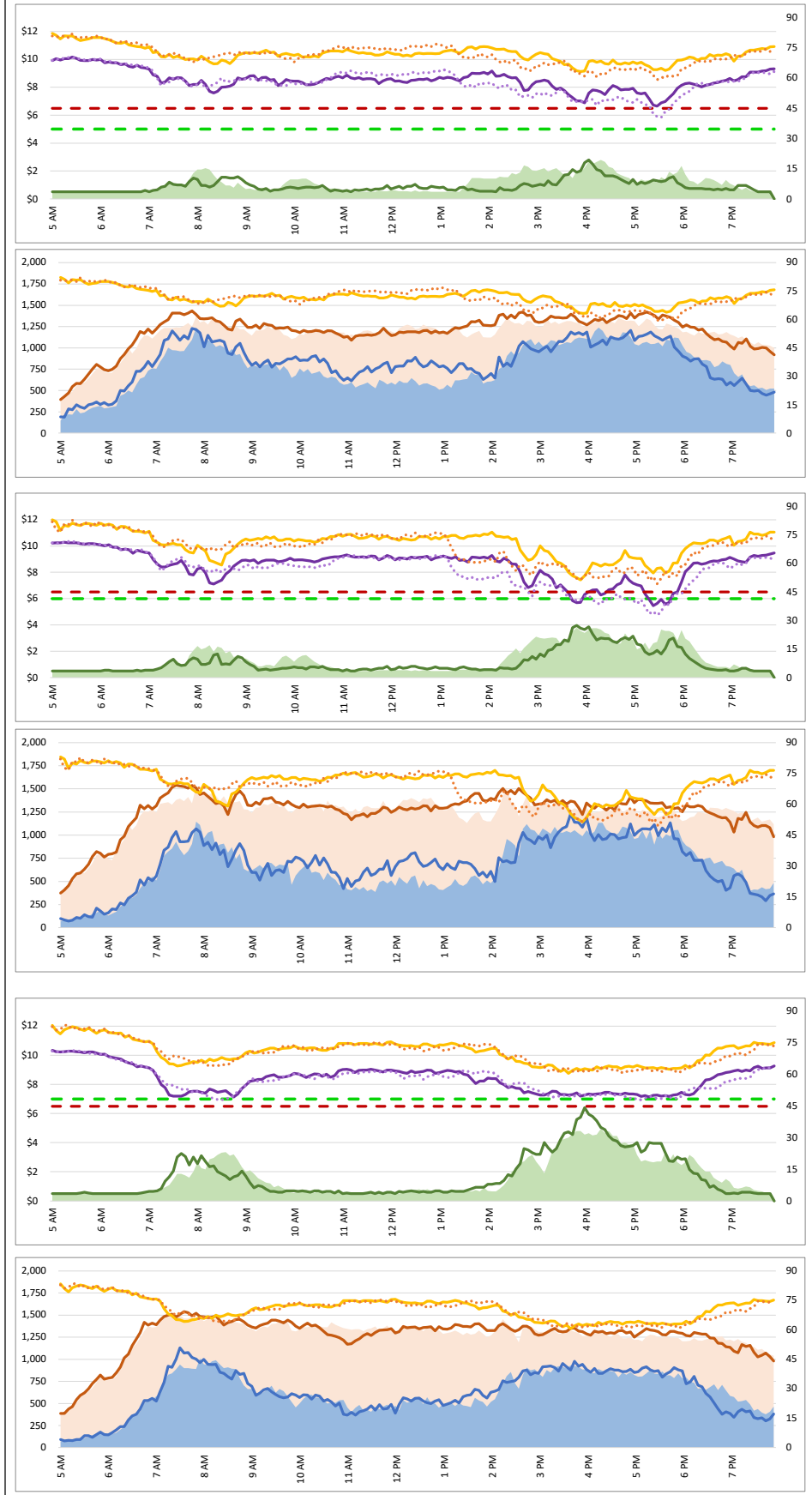


DATA DATE: **Week of 3/3 - 3/7**

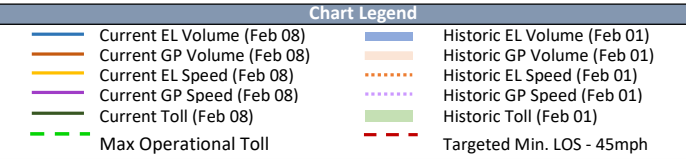
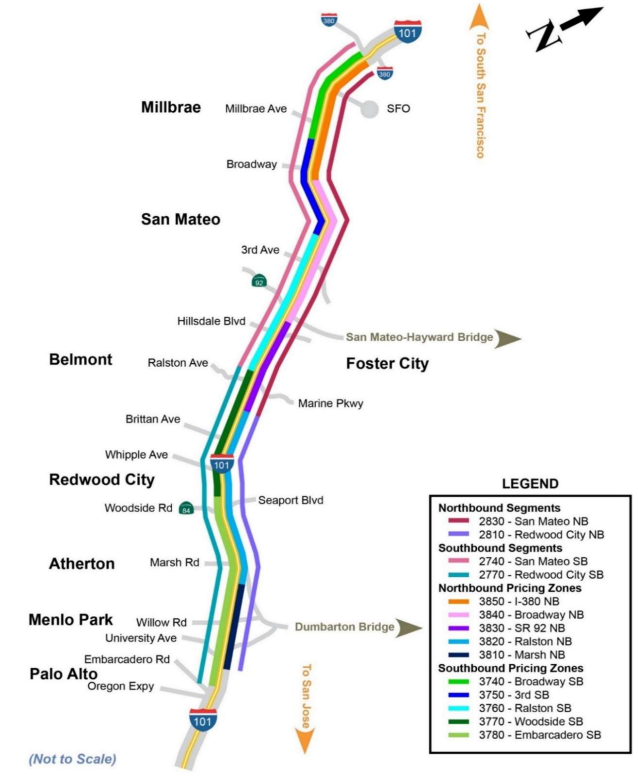
1. Lane Performance

Average Speeds, Volumes & Tolls - Current (Week of 3/3 - 3/7) vs Historic (Week of 2/24 - 2/28)



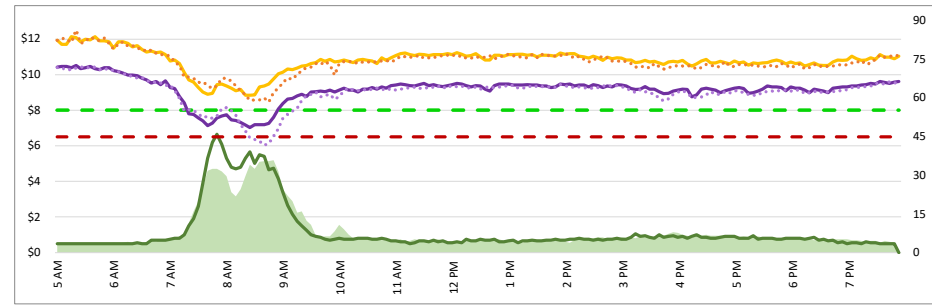
Map of SM101 Corridor (Not To Scale)

SM101 Express Lanes Corridor Map



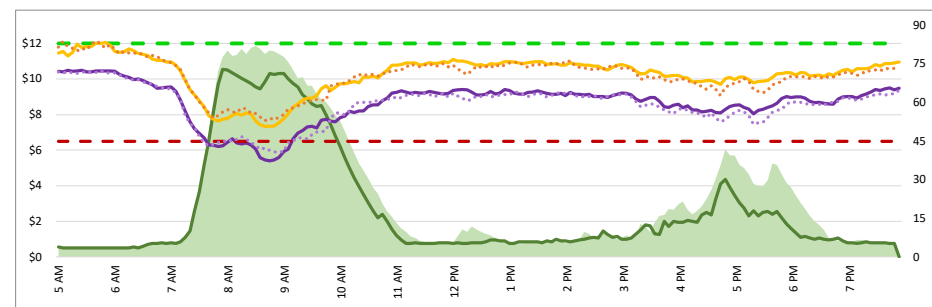
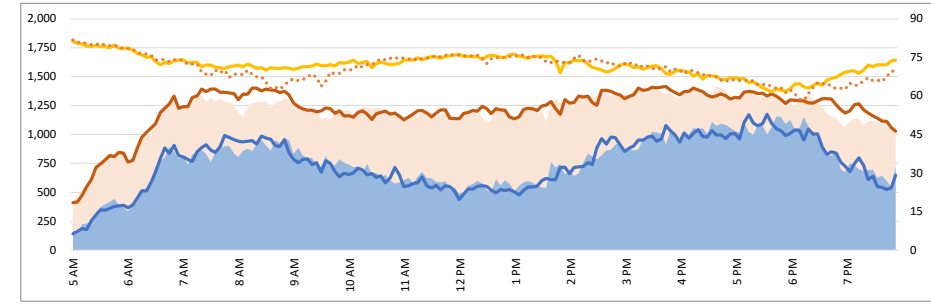
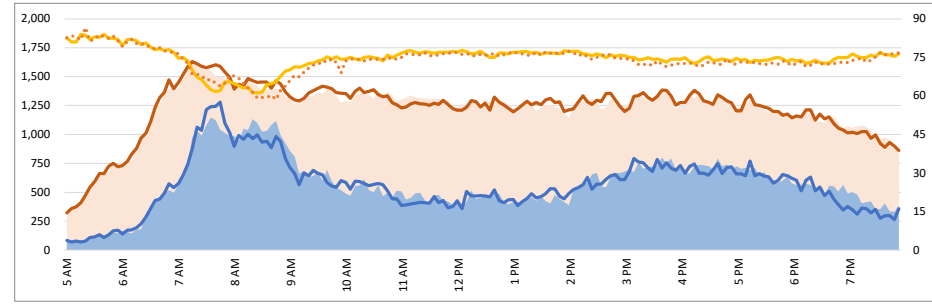
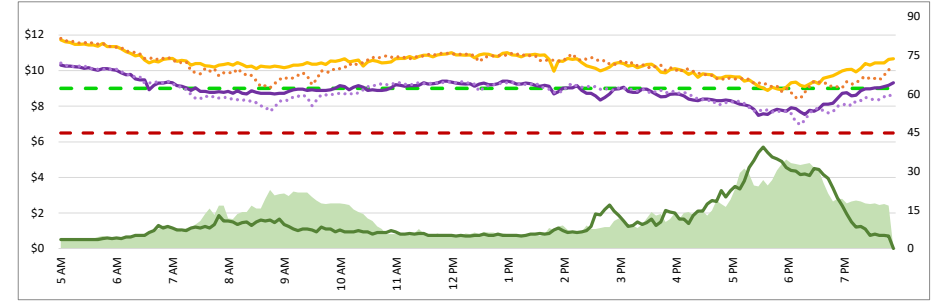
1. Lane Performance

Average Speeds, Volumes & Tolls - Current (Week of 3/3 - 3/7) vs Historic (Week of 2/24 - 2/28)



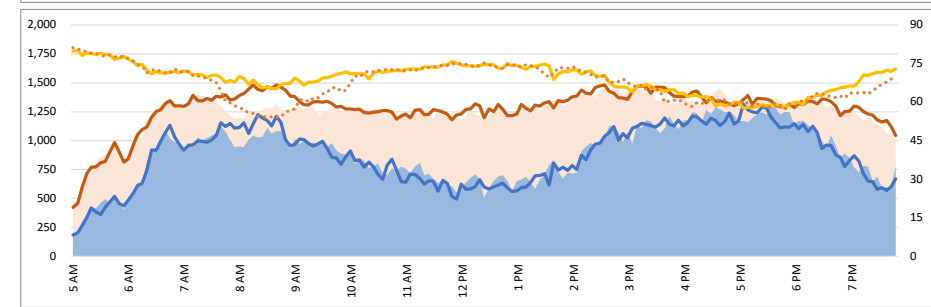
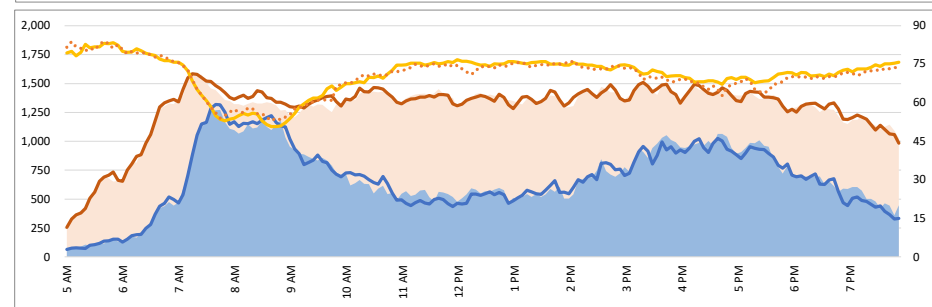
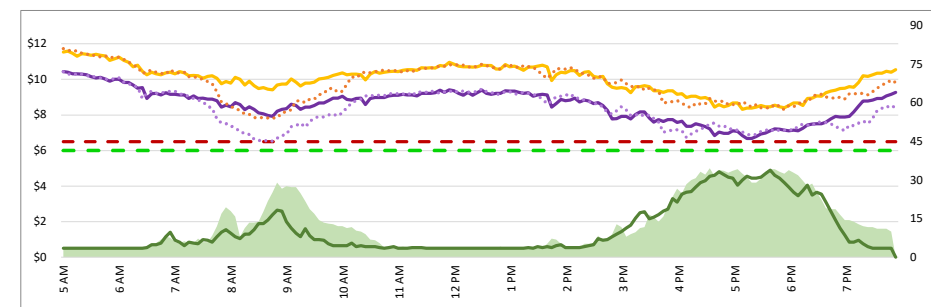
3770 - Woodside SB

3820 - Ralston NB



3780 - Embarcadero SB

3810 - Marsh NB



DATA DATE: Week of 3/3 - 3/7

Map of SM101 Corridor (Not To Scale)

SM101 Express Lanes Corridor Map

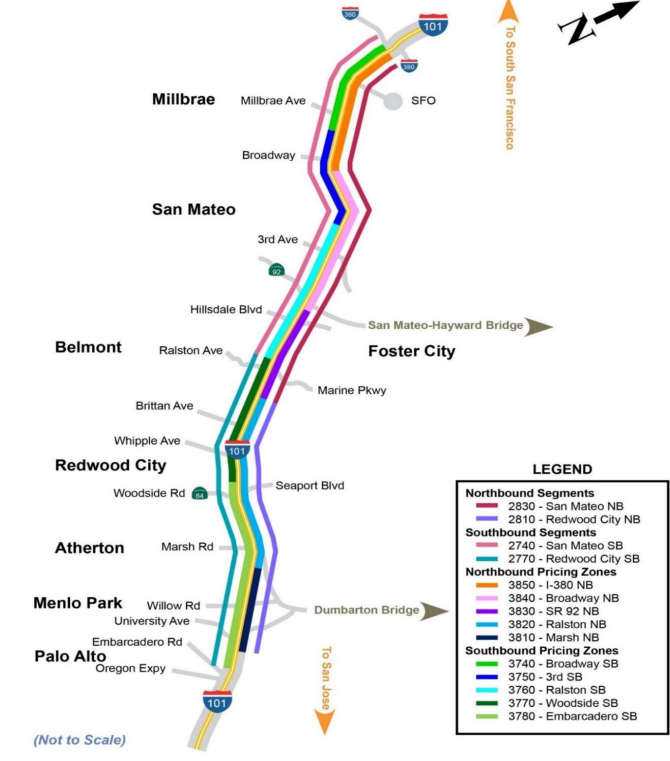


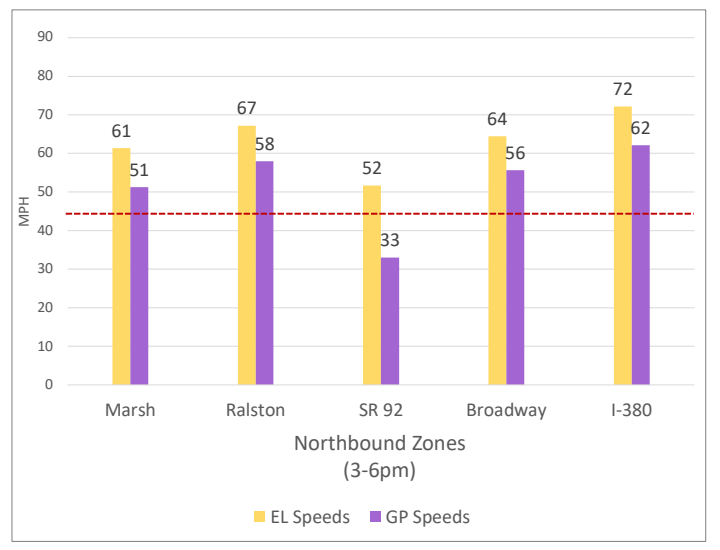
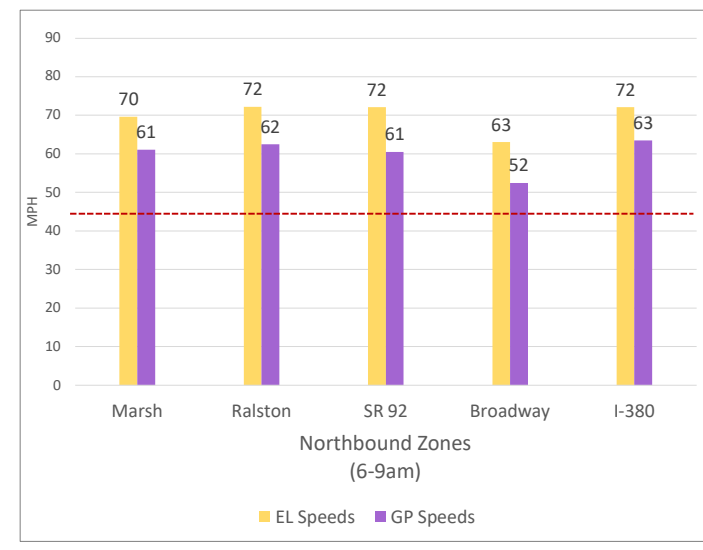
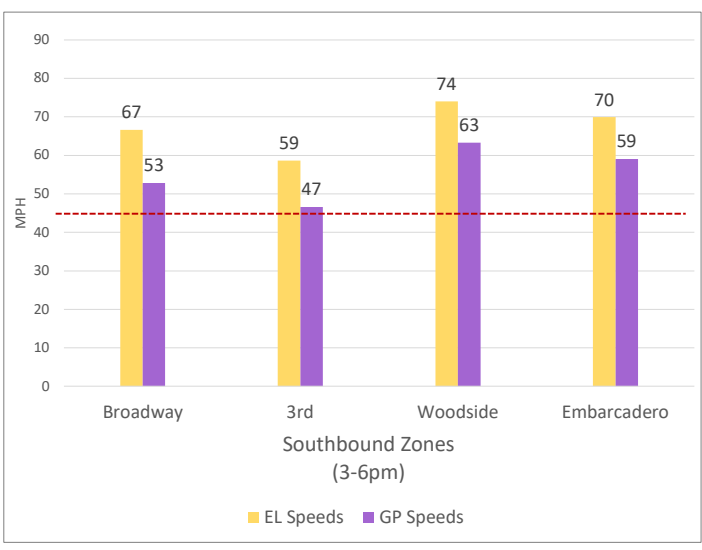
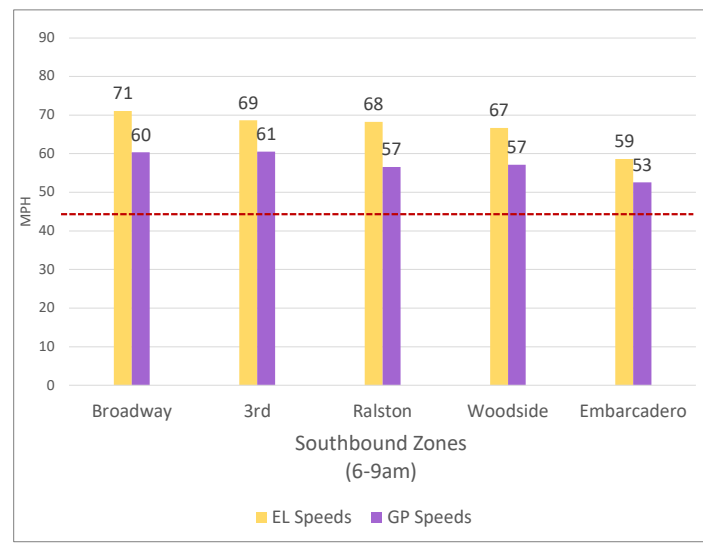
Chart Legend

— Current EL Volume (Feb 08)	— Historic EL Volume (Feb 01)
— Current GP Volume (Feb 08)	— Historic GP Volume (Feb 01)
— Current EL Speed (Feb 08)	— Historic EL Speed (Feb 01)
— Current GP Speed (Feb 08)	— Historic GP Speed (Feb 01)
— Current Toll (Feb 08)	— Historic Toll (Feb 01)
— Max Operational Toll	— Targeted Min. LOS - 45mph

DATA DATE: **Week of 3/3 - 3/7**

2. Toll System Performance

Speed Differential - Directional Peak Periods



- - Targeted Min. LOS - 45mph