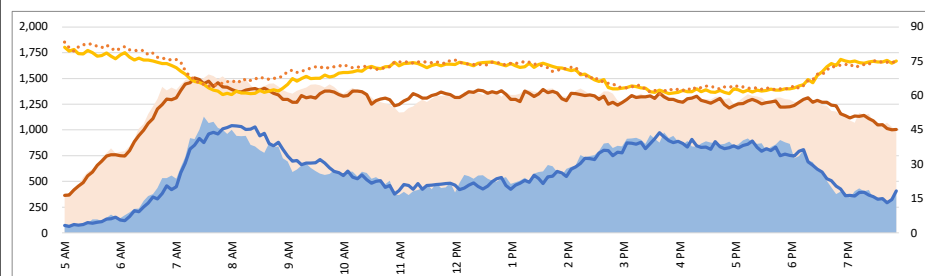
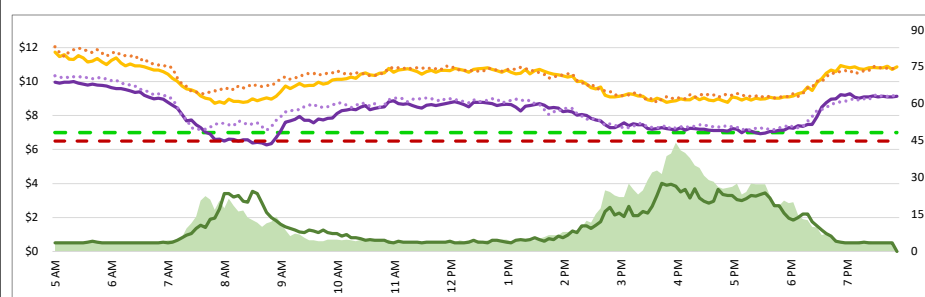
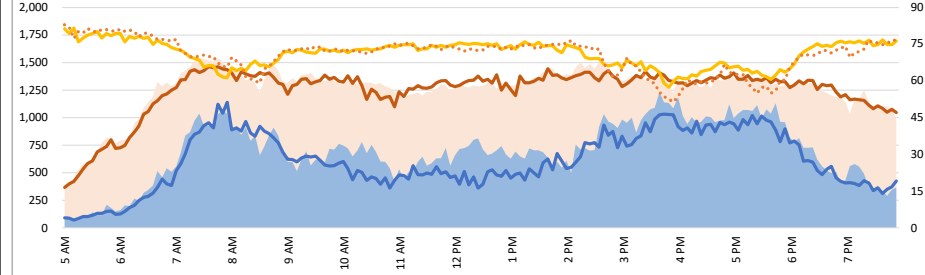
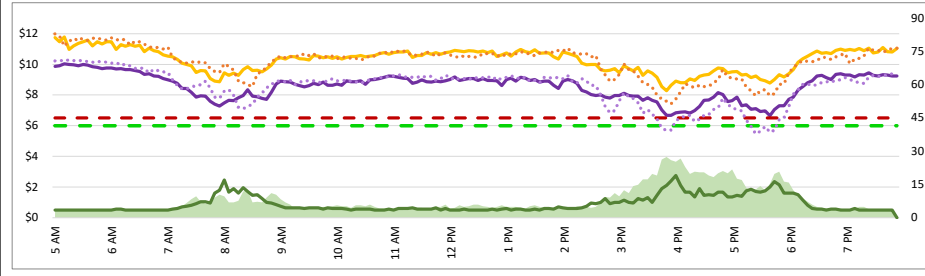
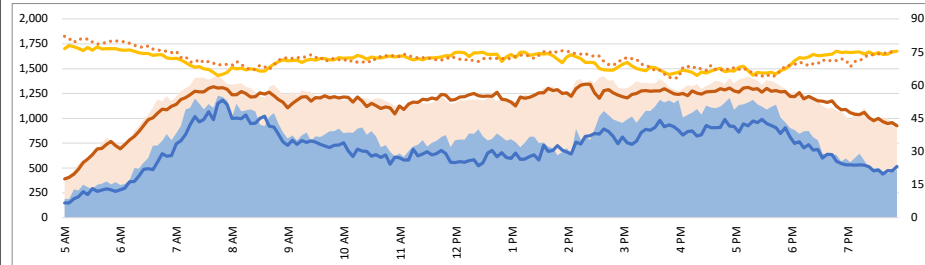
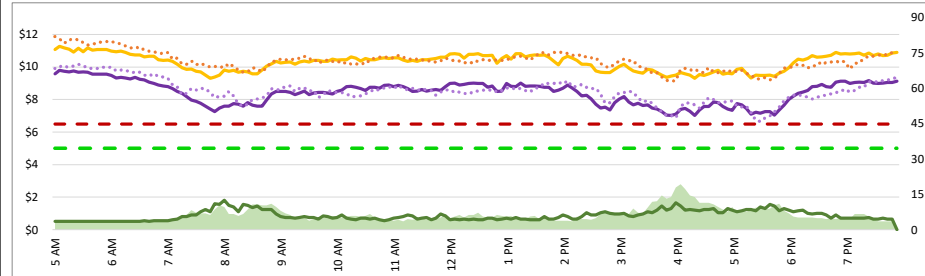


1. Lane Performance

Average Speeds, Volumes & Tolls - Current (Week of 3/10 - 3/14) vs Historic (Week of 3/3 - 3/7)

DATA DATE: Week of 3/10 - 3/14



3740 - Broadway SB

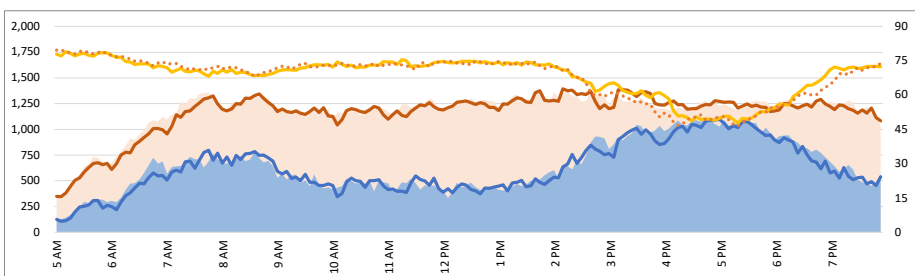
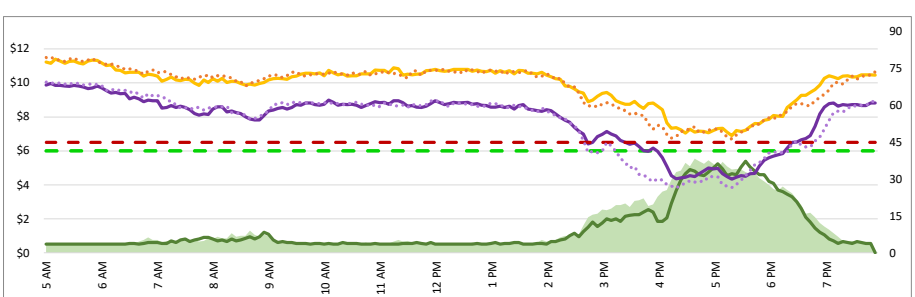
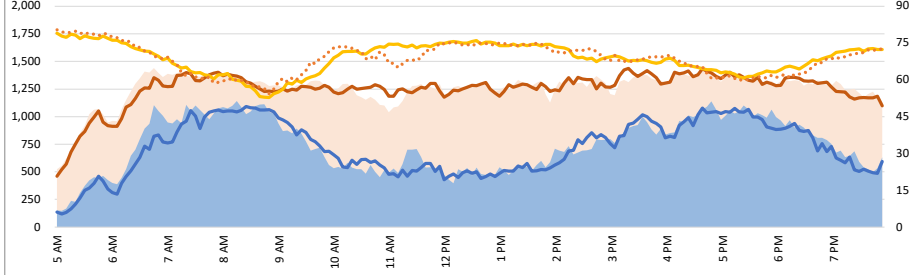
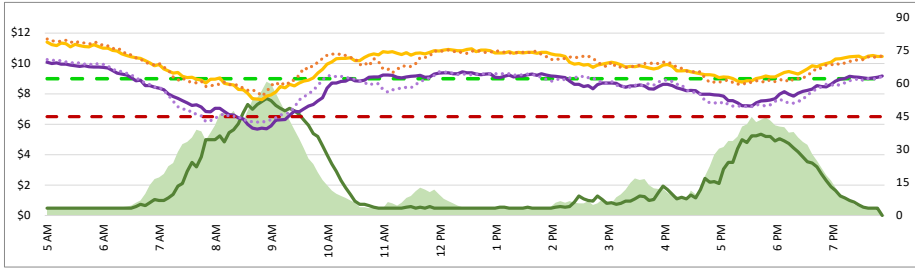
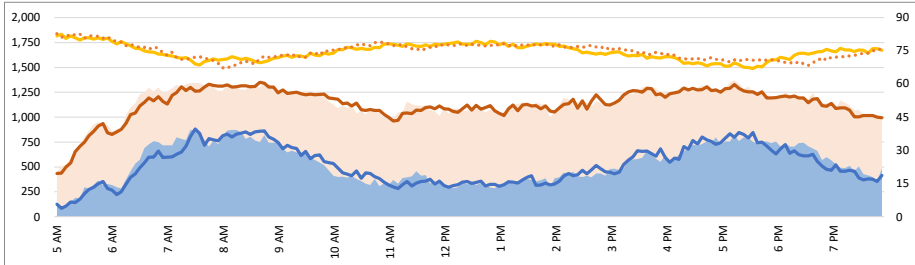
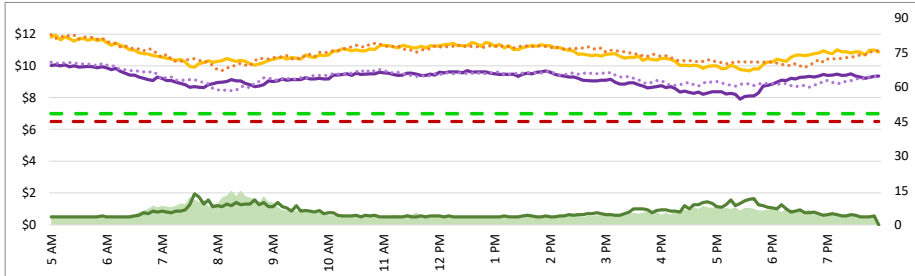
3850 - I-380 NB

3750 - 3rd SB

3840 - Broadway NB

3760 - Ralston SB

3830 - SR 92 NB



Map of SM101 Corridor (Not To Scale)

SM101 Express Lanes Corridor Map

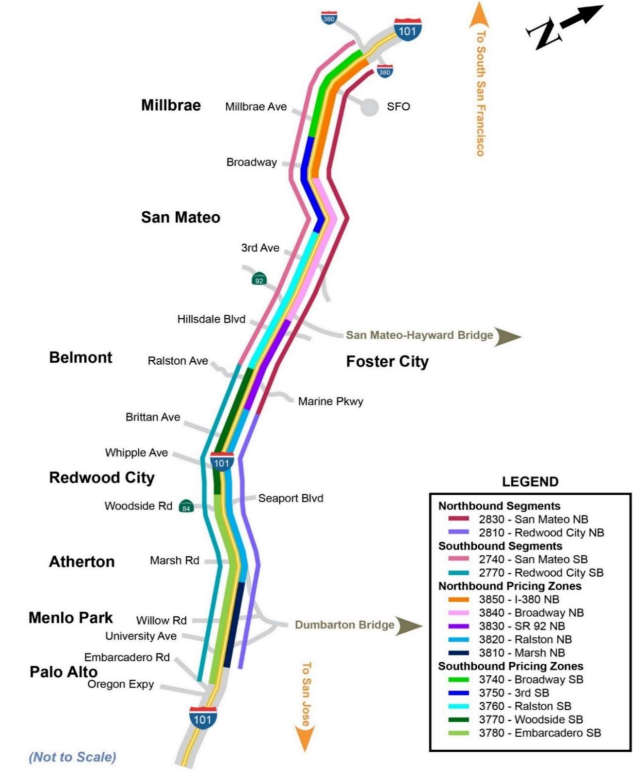
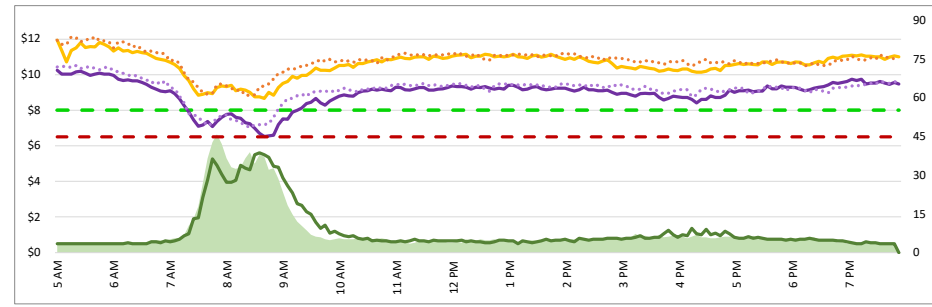


Chart Legend

Current EL Volume (Feb 08)	Historic EL Volume (Feb 01)
Current GP Volume (Feb 08)	Historic GP Volume (Feb 01)
Current EL Speed (Feb 08)	Historic EL Speed (Feb 01)
Current GP Speed (Feb 08)	Historic GP Speed (Feb 01)
Current Toll (Feb 08)	Historic Toll (Feb 01)
Max Operational Toll	Targeted Min. LOS - 45mph

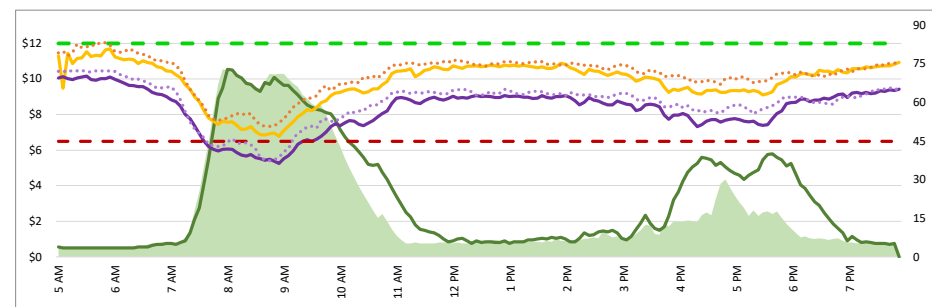
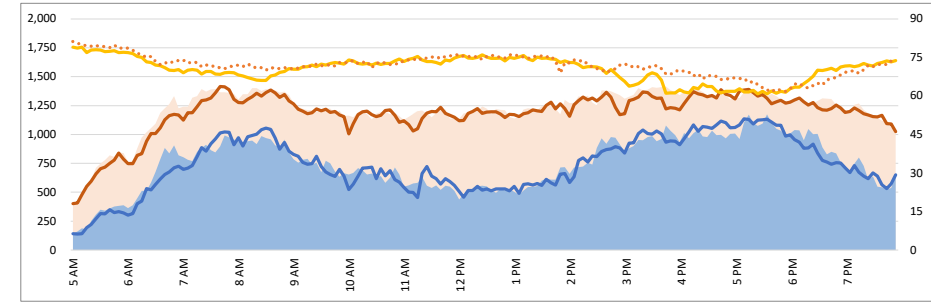
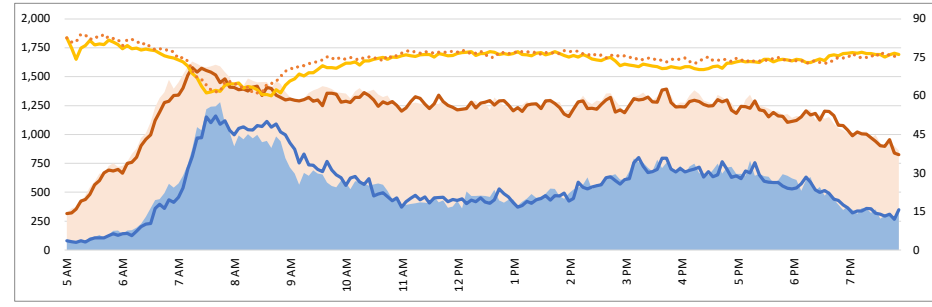
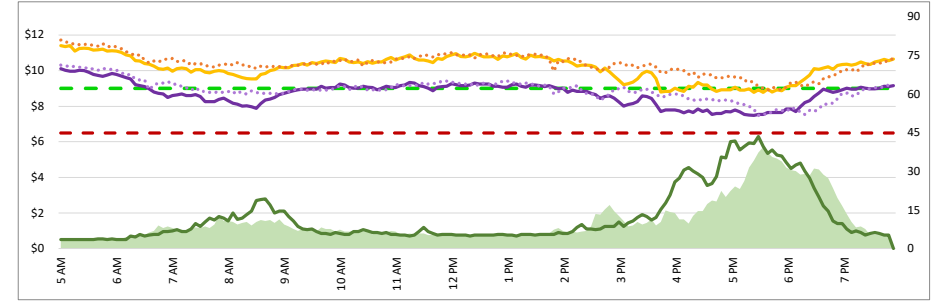
1. Lane Performance

Average Speeds, Volumes & Tolls - Current (Week of 3/10 - 3/14) vs Historic (Week of 3/3 - 3/7)



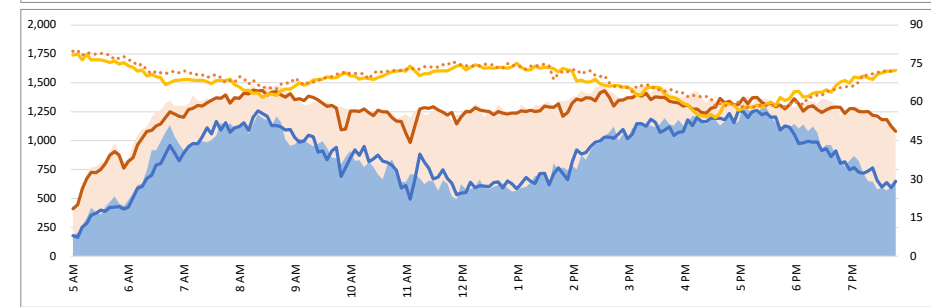
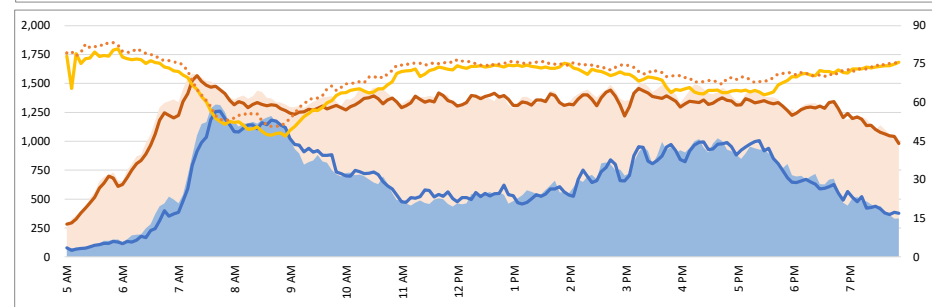
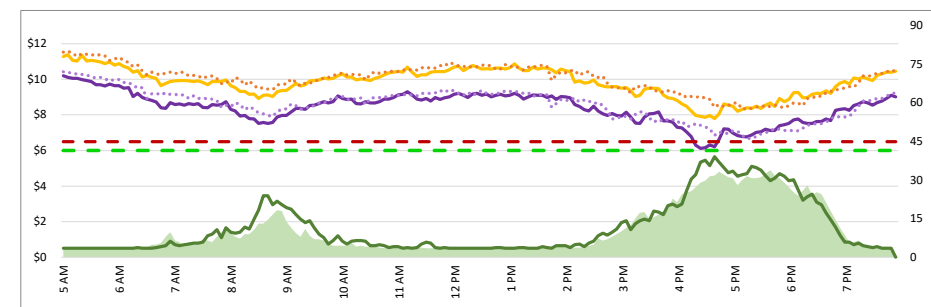
3770 - Woodside SB

3820 - Ralston NB



3780 - Embarcadero SB

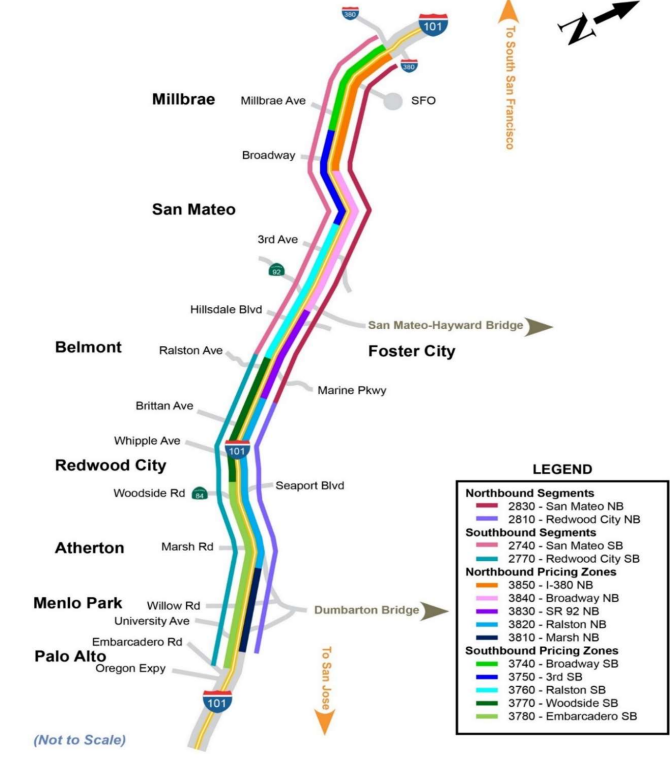
3810 - Marsh NB



DATA DATE: Week of 3/10 - 3/14

Map of SM101 Corridor (Not To Scale)

SM101 Express Lanes Corridor Map



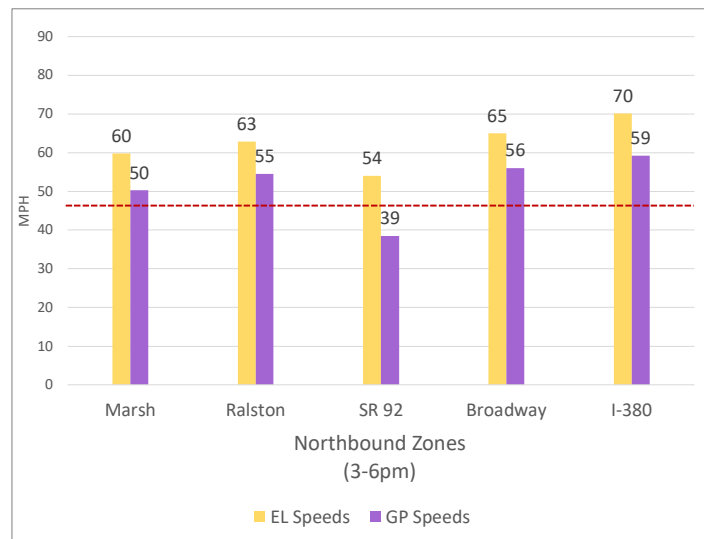
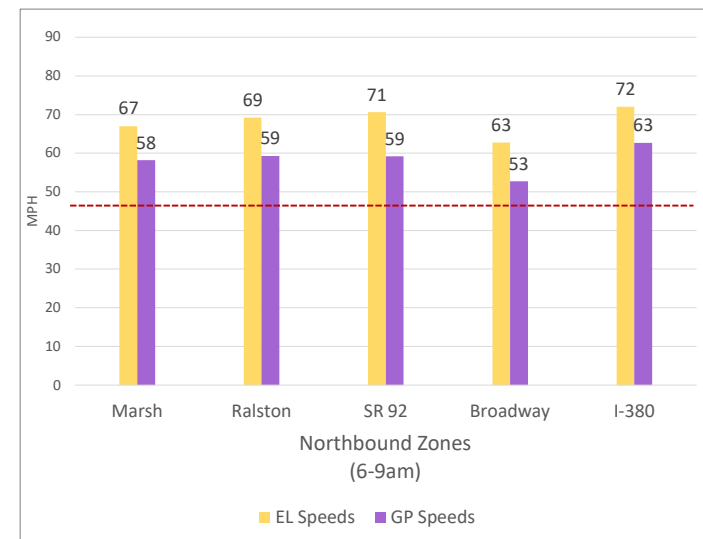
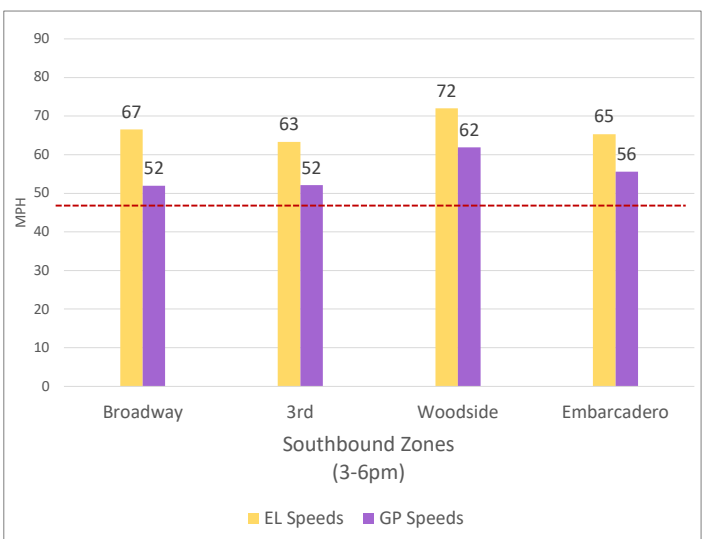
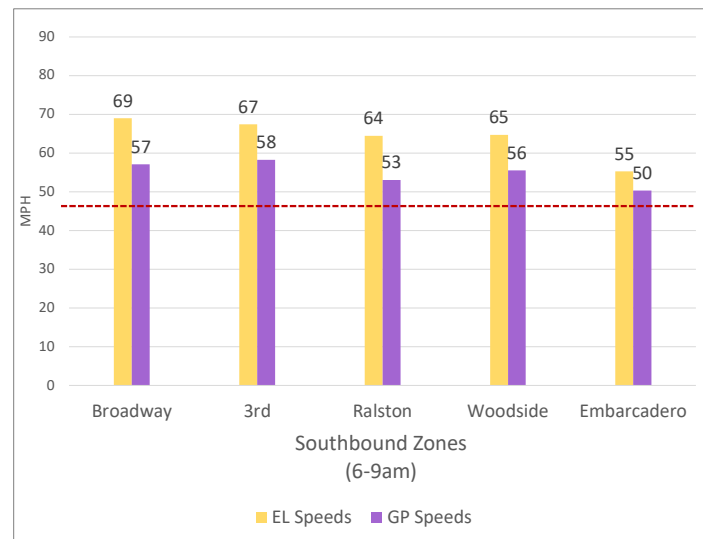
- LEGEND**
- Northbound Segments**
 - 2830 - San Mateo NB
 - 2810 - Redwood City NB
 - Southbound Segments**
 - 2740 - San Mateo SB
 - 2770 - Redwood City SB
 - Northbound Pricing Zones**
 - 3850 - I-380 NB
 - 3840 - Broadway NB
 - 3830 - SR 92 NB
 - 3820 - Ralston NB
 - 3810 - Marsh NB
 - Southbound Pricing Zones**
 - 3740 - Broadway SB
 - 3750 - 3rd SB
 - 3760 - Ralston SB
 - 3770 - Woodside SB
 - 3780 - Embarcadero SB

- Chart Legend**
- Current EL Volume (Feb 08)
 - Historic EL Volume (Feb 01)
 - Current GP Volume (Feb 08)
 - Historic GP Volume (Feb 01)
 - Current EL Speed (Feb 08)
 - Historic EL Speed (Feb 01)
 - Current GP Speed (Feb 08)
 - Historic GP Speed (Feb 01)
 - Current Toll (Feb 08)
 - Historic Toll (Feb 01)
 - Max Operational Toll
 - Targeted Min. LOS - 45mph

DATA DATE: **Week of 3/10 - 3/14**

2. Toll System Performance

Speed Differential - Directional Peak Periods



--- Targeted Min. LOS - 45mph