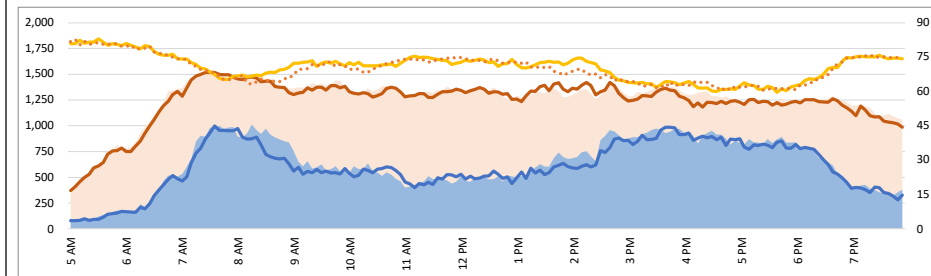
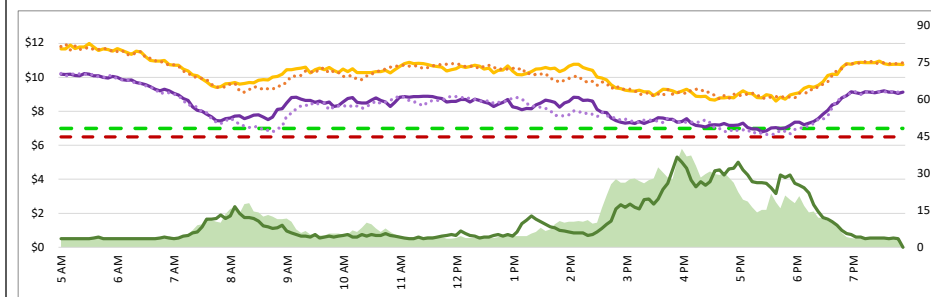
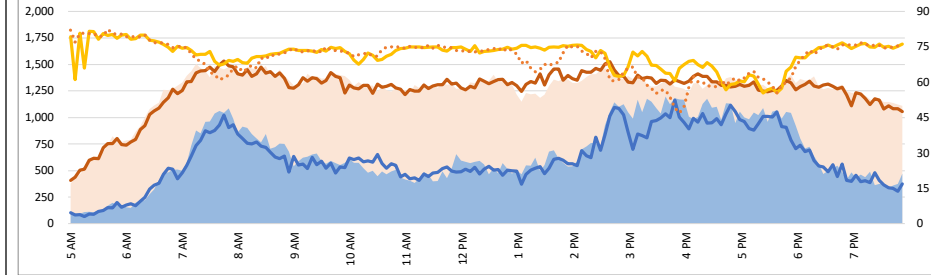
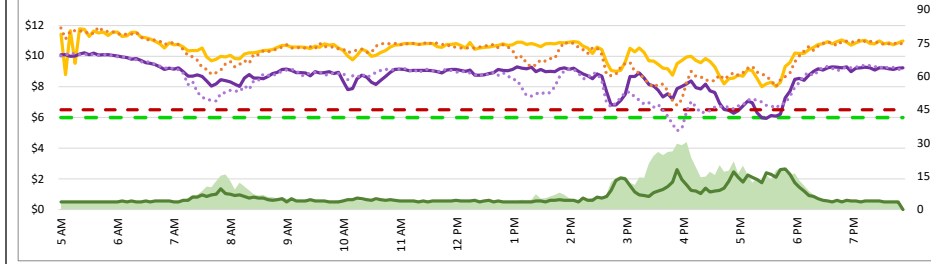
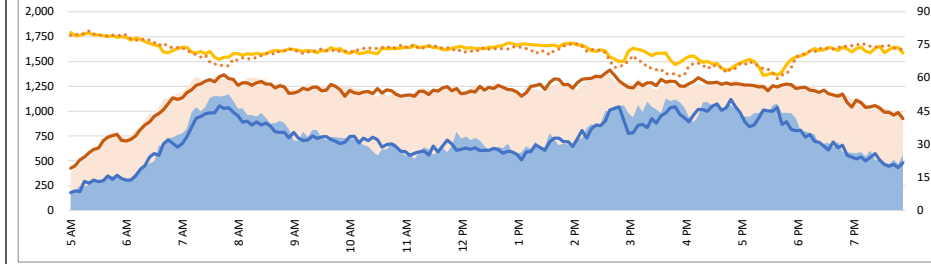
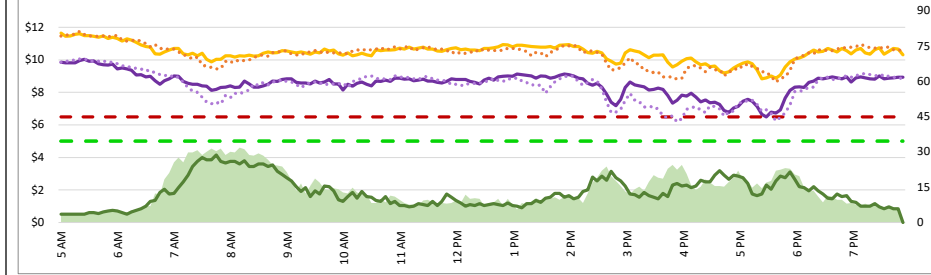


1. Lane Performance

Average Speeds, Volumes & Tolls - Current (Week of 3/31 - 4/4) vs Historic (Week of 3/24 - 3/28)



3740 - Broadway SB

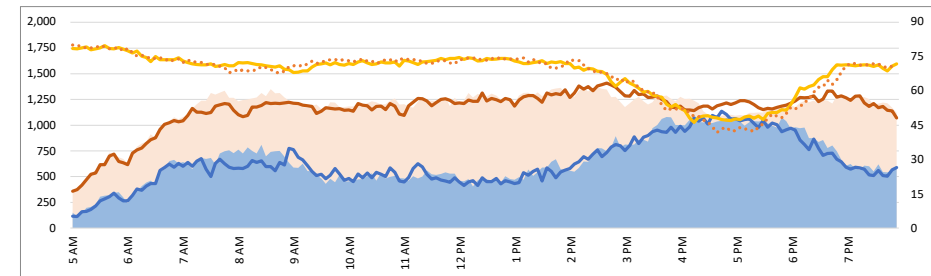
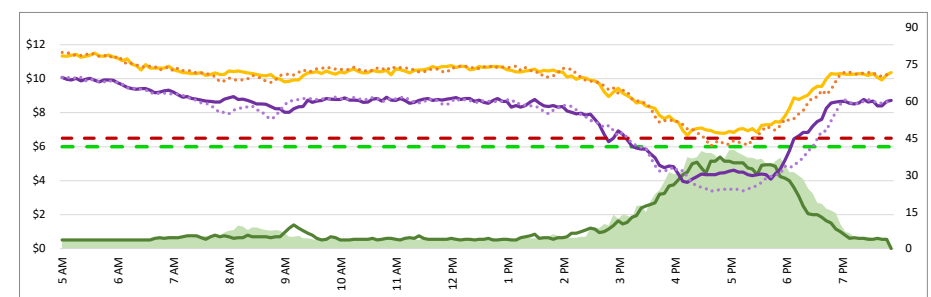
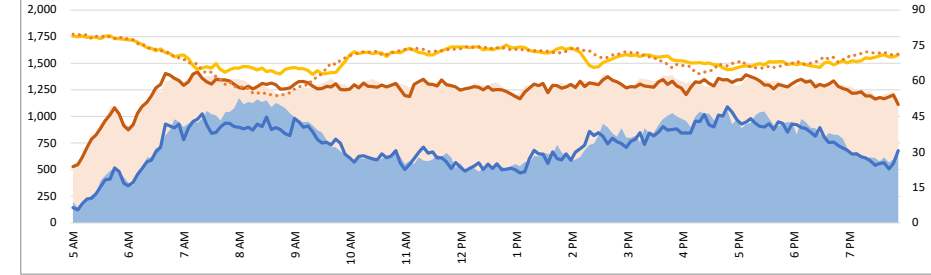
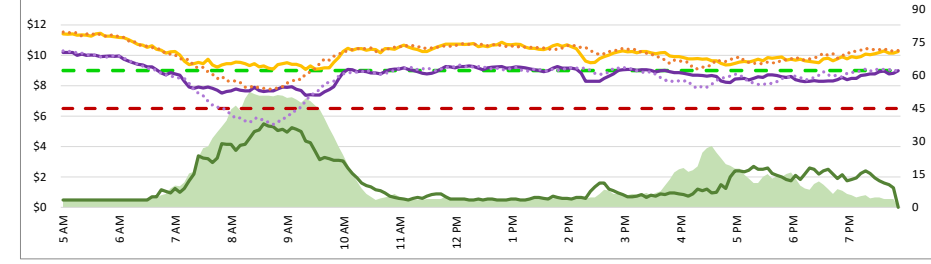
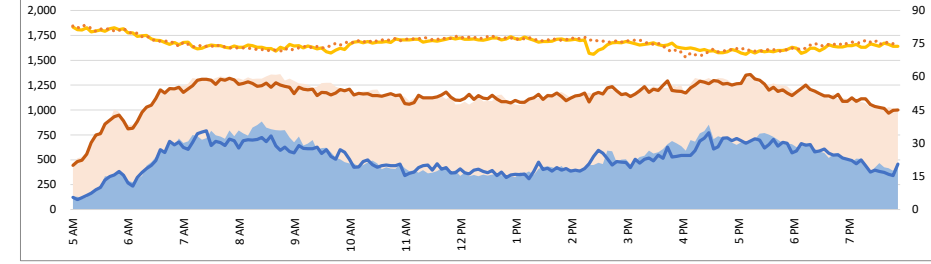
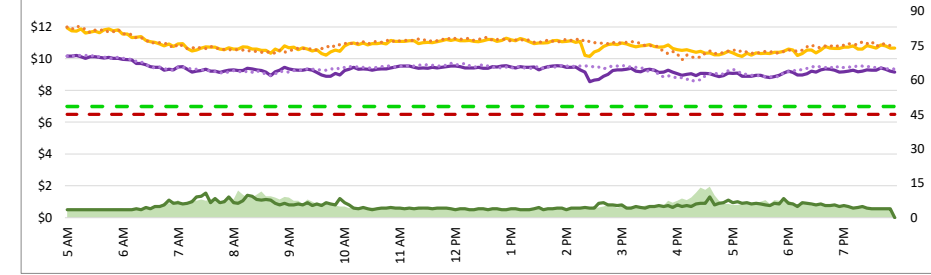
3750 - 3rd SB

3760 - Ralston SB

3850 - I-380 NB

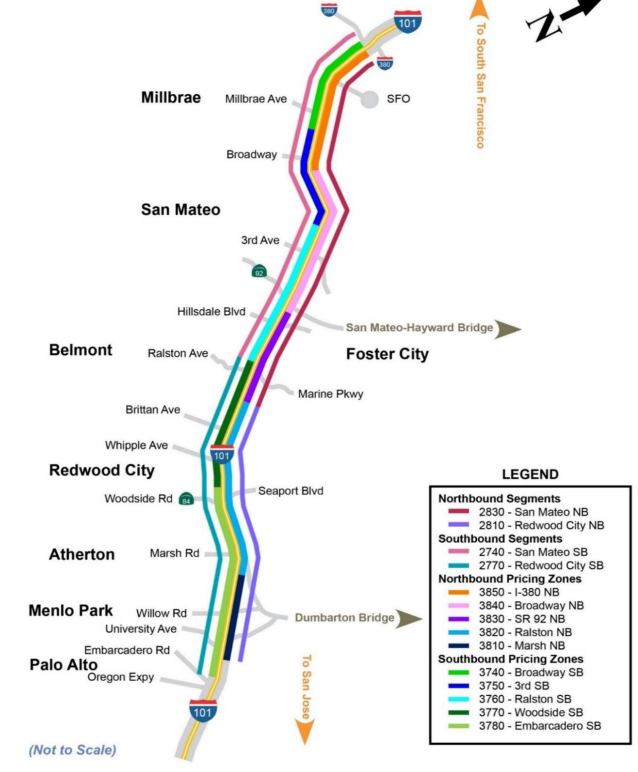
3840 - Broadway NB

3830 - SR 92 NB



Map of SM101 Corridor (Not To Scale) DATA DATE: Week of 3/31 - 4/4

SM101 Express Lanes Corridor Map



LEGEND

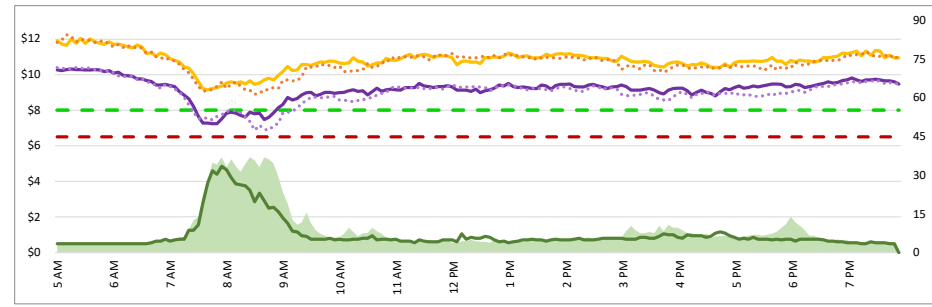
—	2830 - San Mateo NB
—	2810 - Redwood City NB
—	2740 - San Mateo SB
—	2770 - Redwood City SB
—	3850 - I-380 NB
—	3840 - Broadway NB
—	3830 - SR 92 NB
—	3820 - Ralston NB
—	3810 - Marsh NB
—	3740 - Broadway SB
—	3750 - 3rd SB
—	3760 - Ralston SB
—	3770 - Woodside SB
—	3780 - Embarcadero SB

Chart Legend

—	Current EL Volume (Feb 08)	—	Historic EL Volume (Feb 01)
—	Current GP Volume (Feb 08)	—	Historic GP Volume (Feb 01)
—	Current EL Speed (Feb 08)	—	Historic EL Speed (Feb 01)
—	Current GP Speed (Feb 08)	—	Historic GP Speed (Feb 01)
—	Current Toll (Feb 08)	—	Historic Toll (Feb 01)
- - -	Max Operational Toll	- - -	Targeted Min. LOS - 45mph

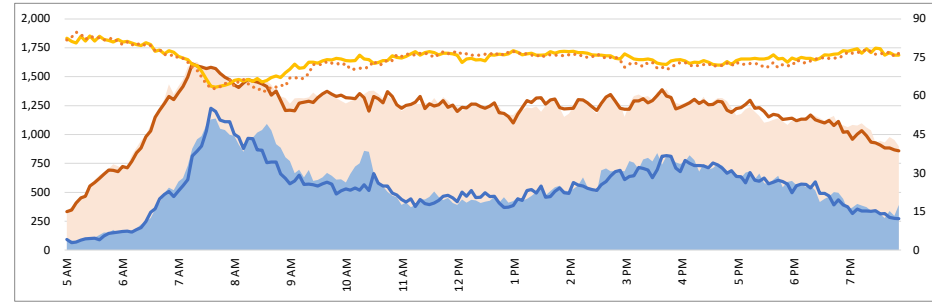
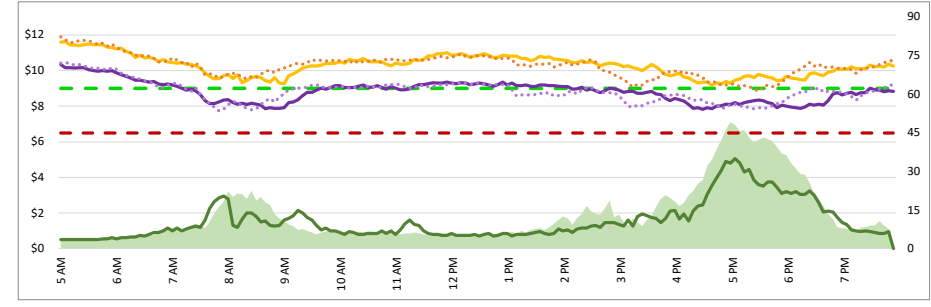
1. Lane Performance

Average Speeds, Volumes & Tolls - Current (Week of 3/31 - 4/4) vs Historic (Week of 3/24 - 3/28)



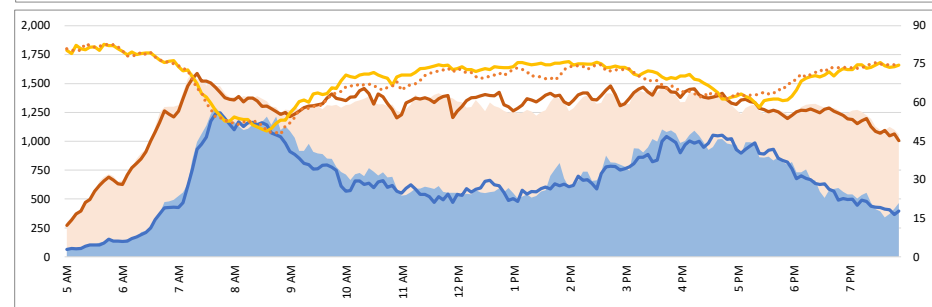
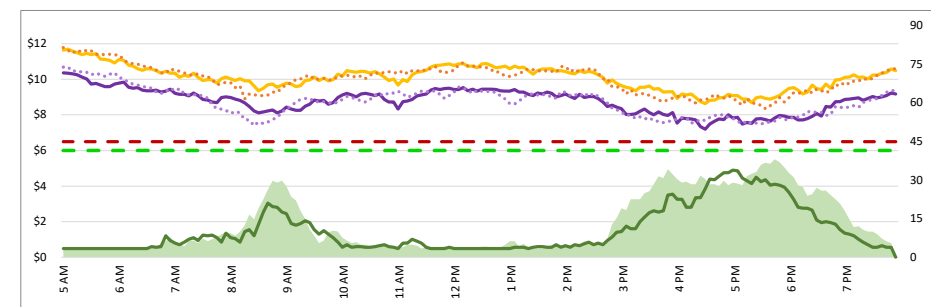
3770 - Woodside SB

3820 - Ralston NB



3780 - Embarcadero SB

3810 - Marsh NB



DATA DATE: Week of 3/31 - 4/4

Map of SM101 Corridor (Not To Scale)

SM101 Express Lanes Corridor Map

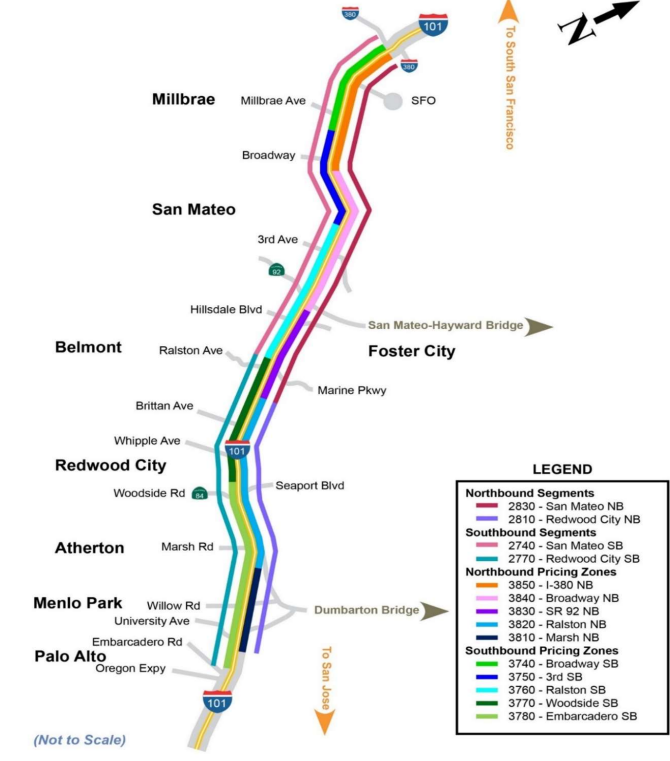


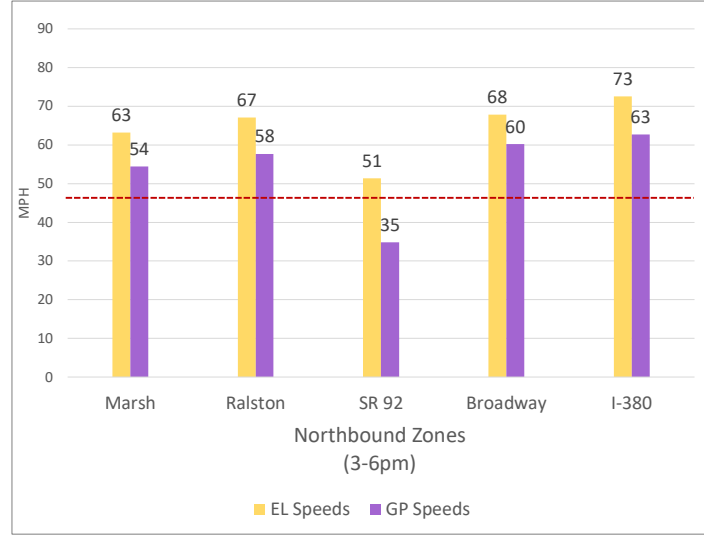
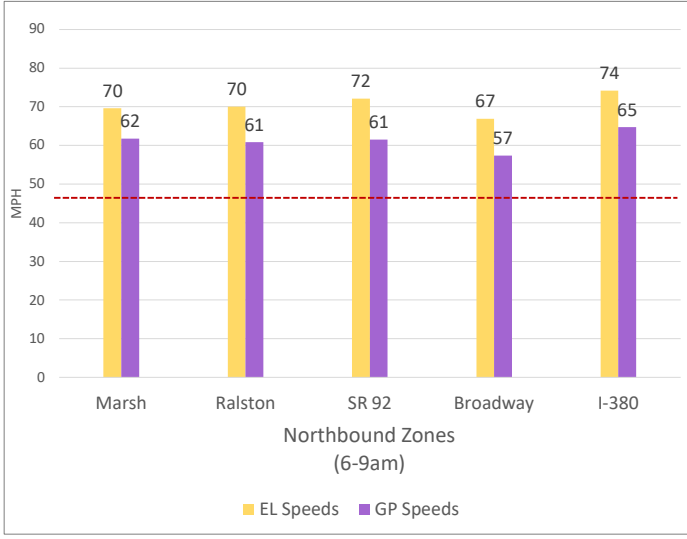
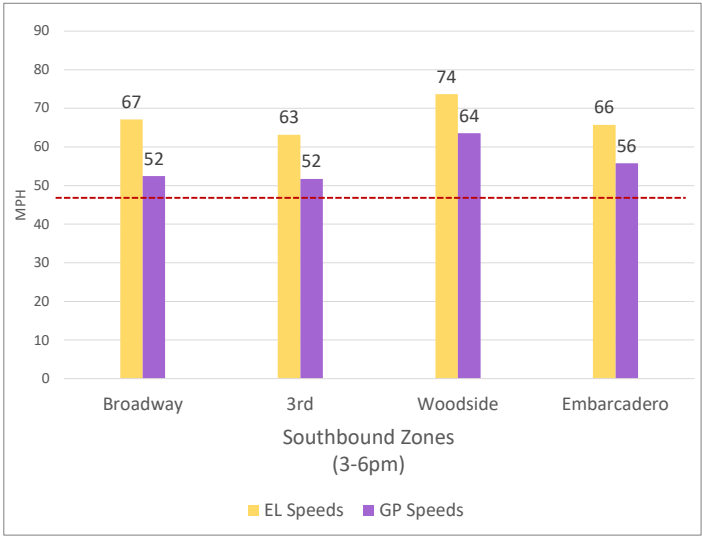
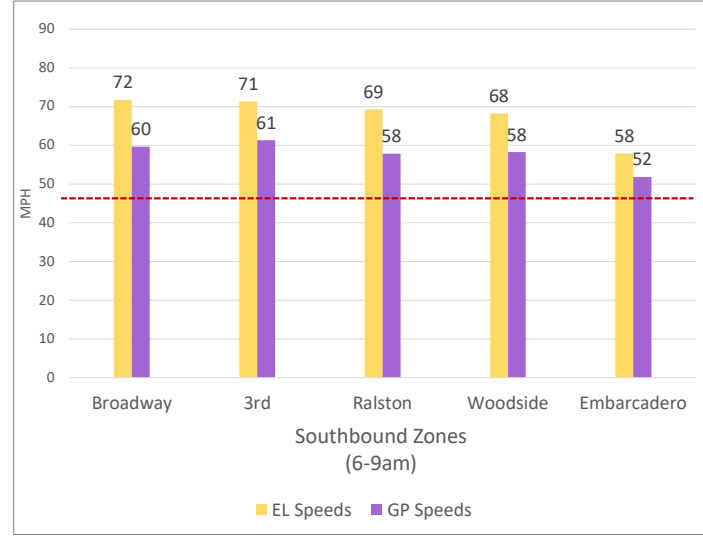
Chart Legend

— Current EL Volume (Feb 08)	— Historic EL Volume (Feb 01)
— Current GP Volume (Feb 08)	— Historic GP Volume (Feb 01)
— Current EL Speed (Feb 08)	— Historic EL Speed (Feb 01)
— Current GP Speed (Feb 08)	— Historic GP Speed (Feb 01)
— Current Toll (Feb 08)	— Historic Toll (Feb 01)
— Max Operational Toll	— Targeted Min. LOS - 45mph

DATA DATE: Week of 3/31 - 4/4

2. Toll System Performance

Speed Differential - Directional Peak Periods



--- Targeted Min. LOS - 45mph