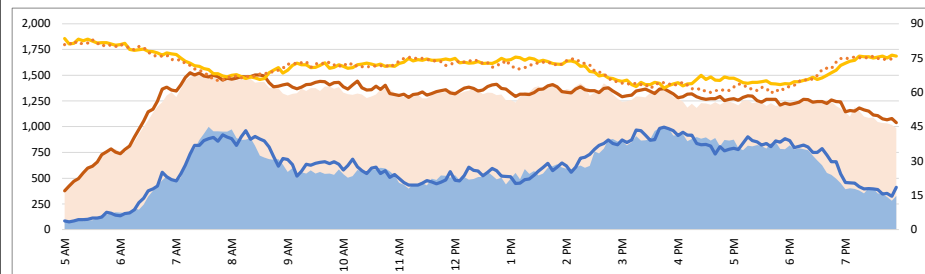
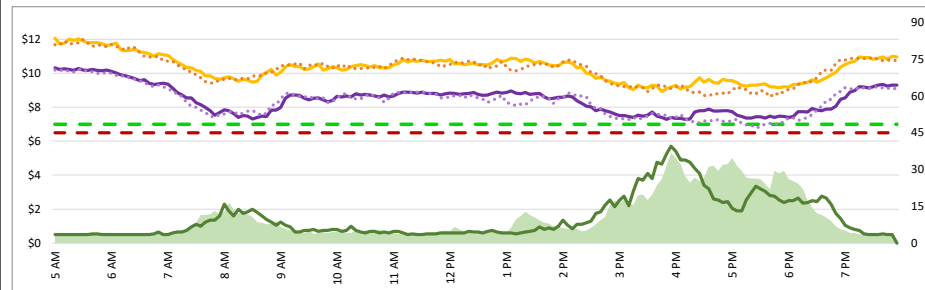
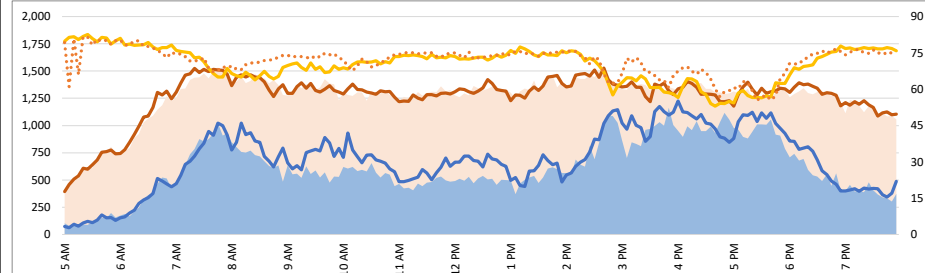
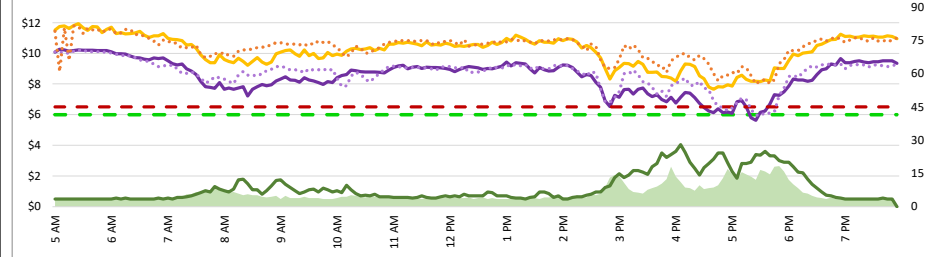
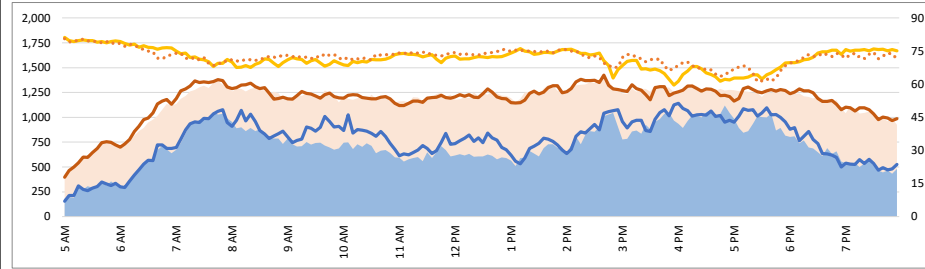
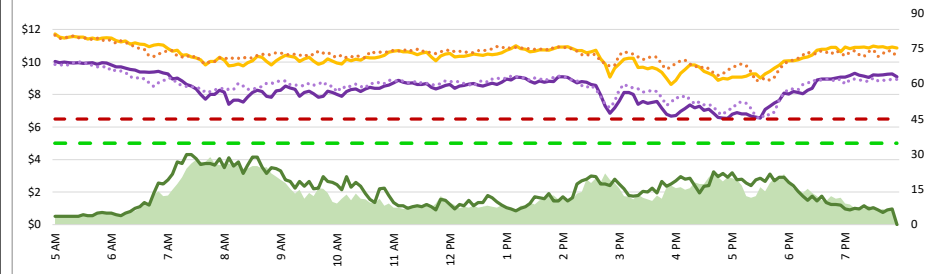


1. Lane Performance

Average Speeds, Volumes & Tolls - Current (Week of 4/7 - 4/11) vs Historic (Week of 3/31 - 4/4)



3740 - Broadway SB

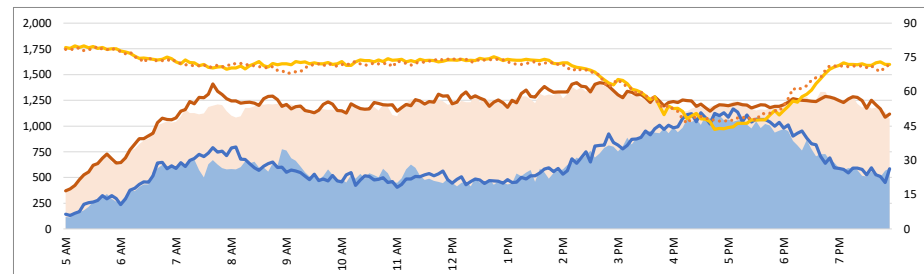
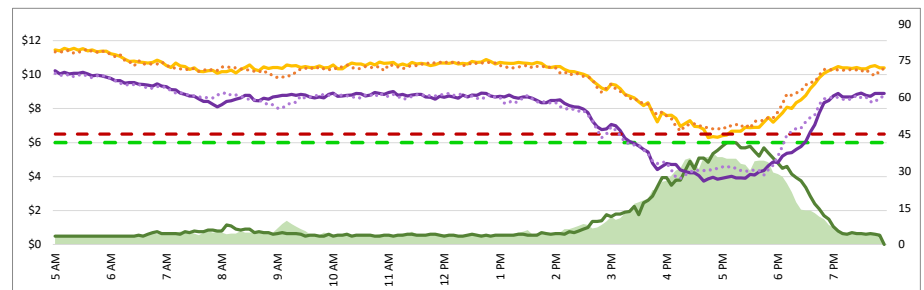
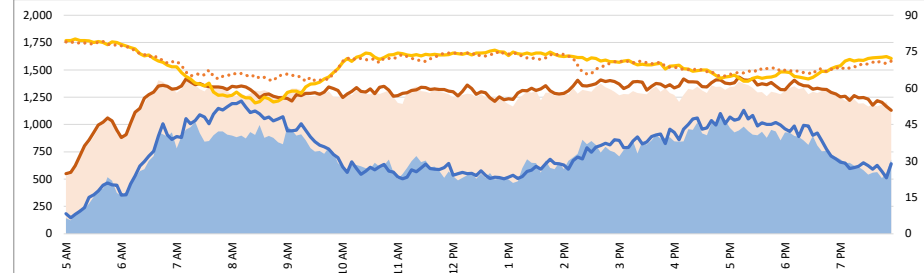
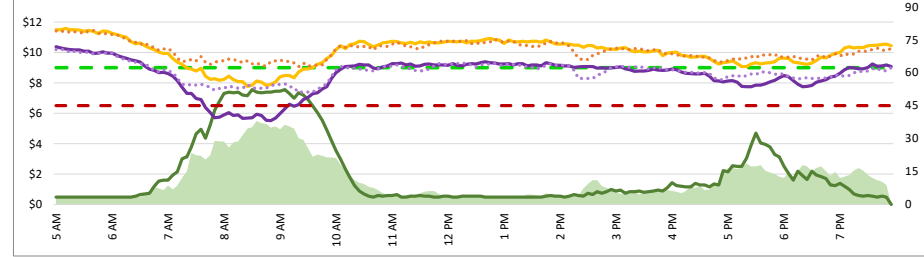
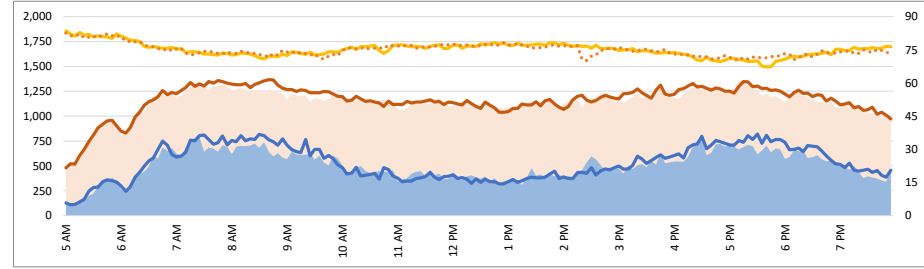
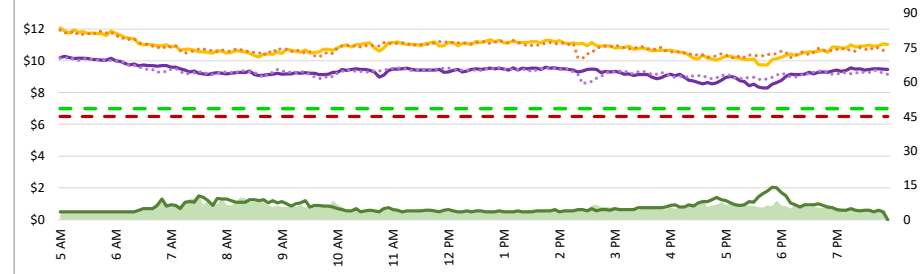
3850 - I-380 NB

3750 - 3rd SB

3840 - Broadway NB

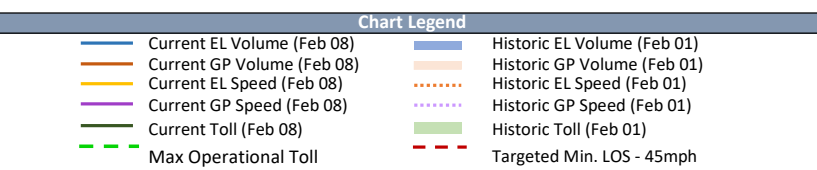
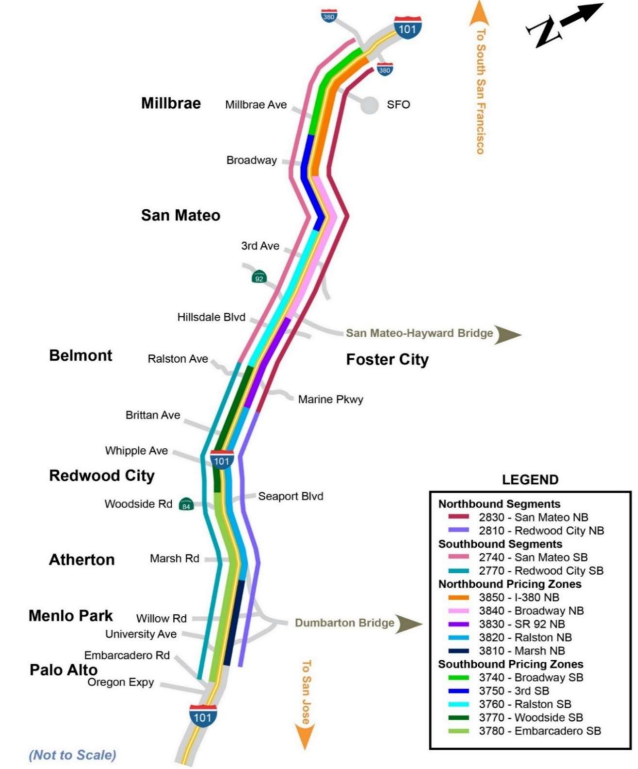
3760 - Ralston SB

3830 - SR 92 NB



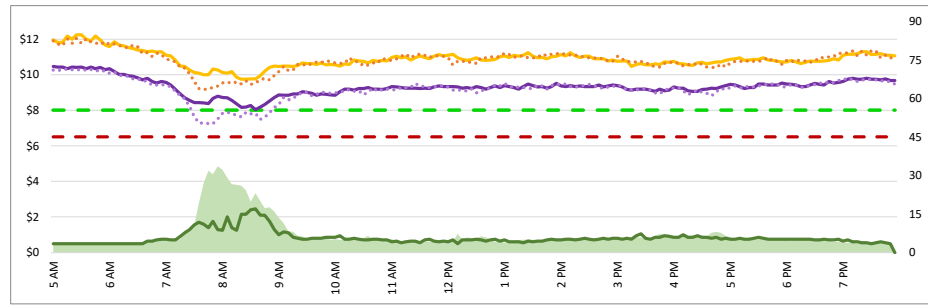
Map of SM101 Corridor (Not To Scale) DATA DATE: Week of 4/7 - 4/11

SM101 Express Lanes Corridor Map



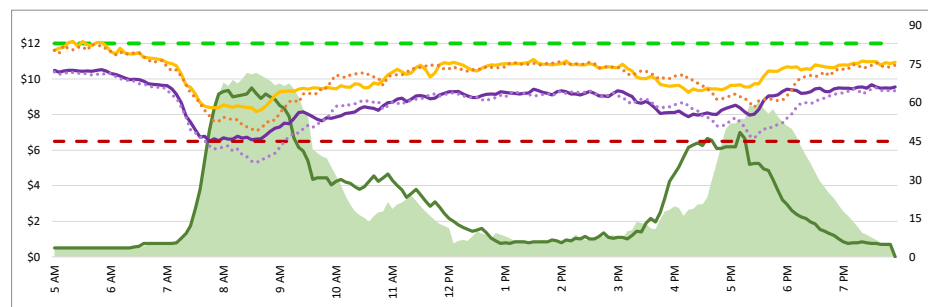
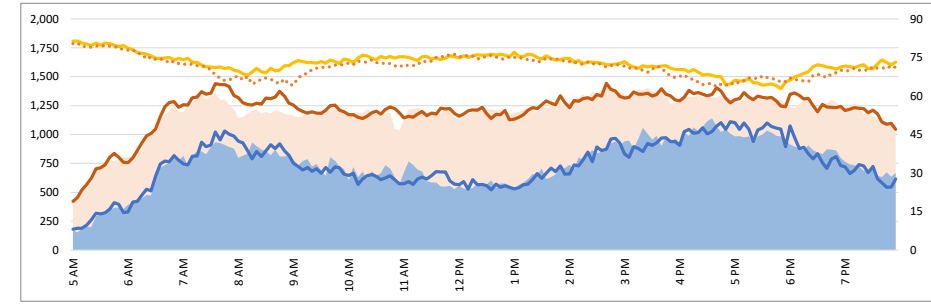
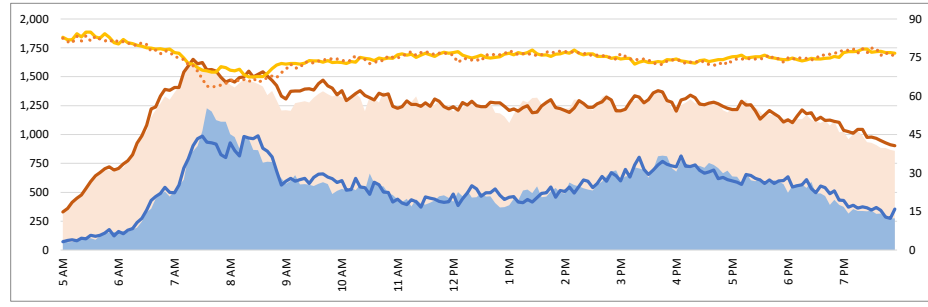
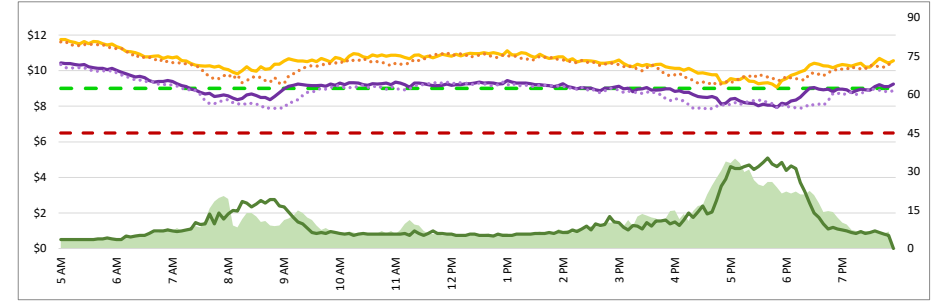
1. Lane Performance

Average Speeds, Volumes & Tolls - Current (Week of 4/7 - 4/11) vs Historic (Week of 3/31 - 4/4)



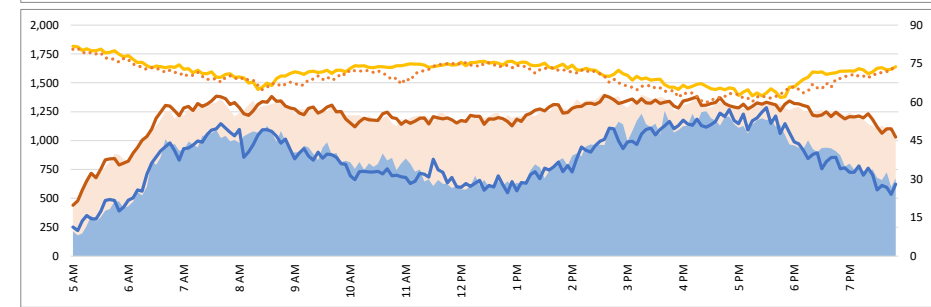
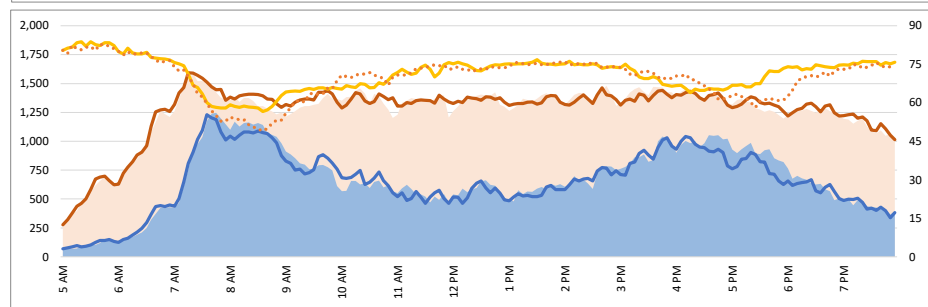
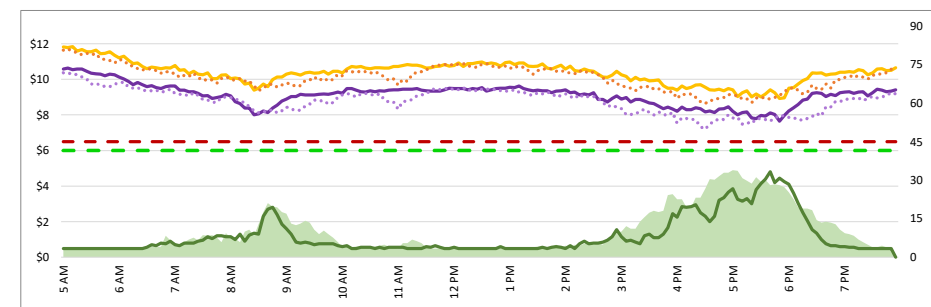
3770 - Woodside SB

3820 - Ralston NB



3780 - Embarcadero SB

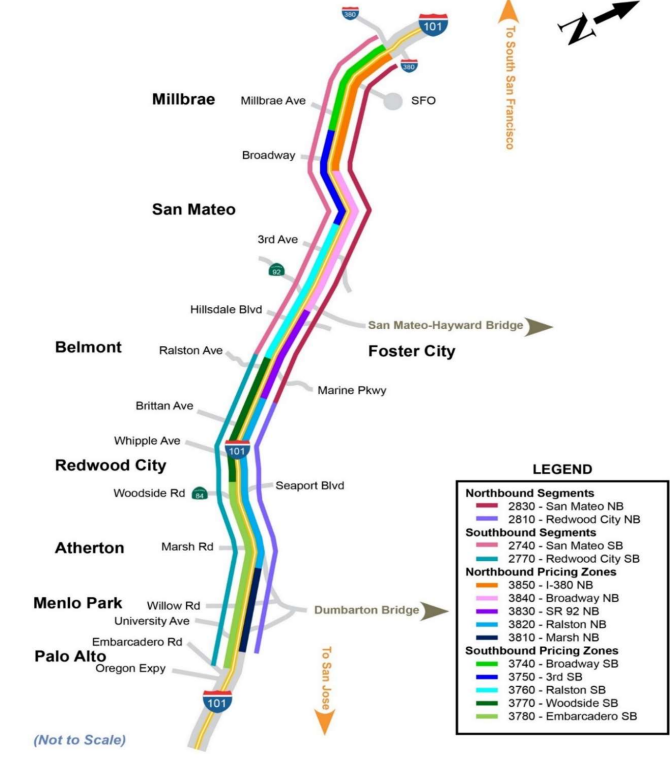
3810 - Marsh NB



DATA DATE: Week of 4/7 - 4/11

Map of SM101 Corridor (Not To Scale)

SM101 Express Lanes Corridor Map



- LEGEND**
- Northbound Segments**
 - 2830 - San Mateo NB
 - 2810 - Redwood City NB
 - Southbound Segments**
 - 2740 - San Mateo SB
 - 2770 - Redwood City SB
 - Northbound Pricing Zones**
 - 3850 - I-380 NB
 - 3840 - Broadway NB
 - 3830 - SR 92 NB
 - 3820 - Ralston NB
 - 3810 - Marsh NB
 - Southbound Pricing Zones**
 - 3740 - Broadway SB
 - 3750 - 3rd SB
 - 3760 - Ralston SB
 - 3770 - Woodside SB
 - 3780 - Embarcadero SB

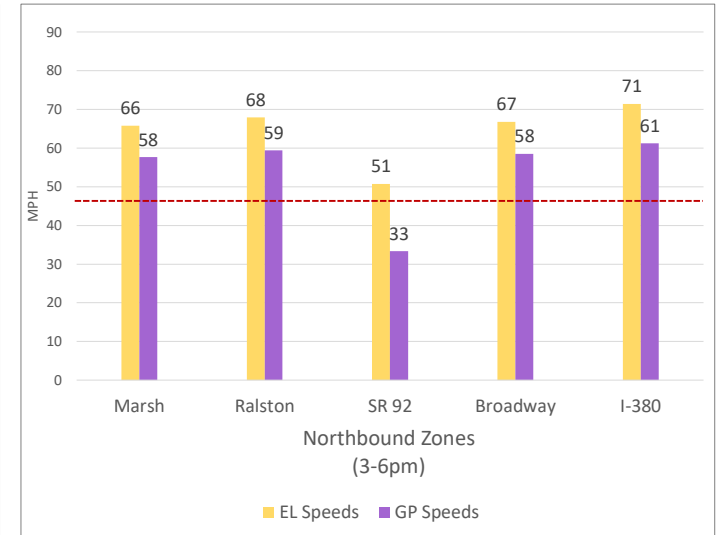
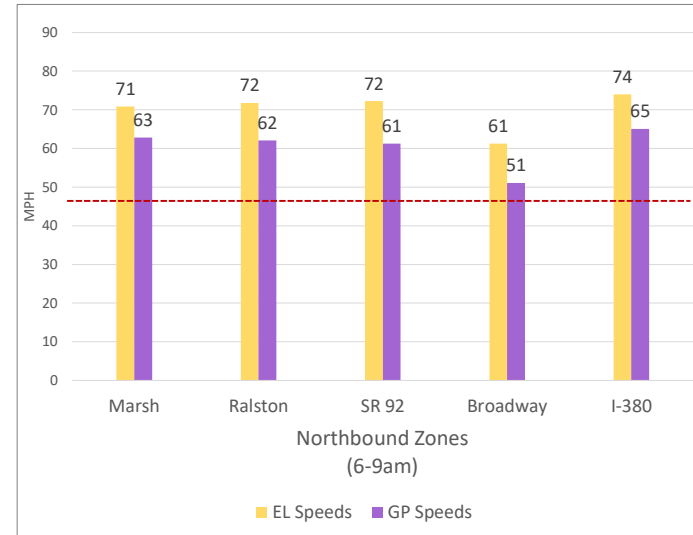
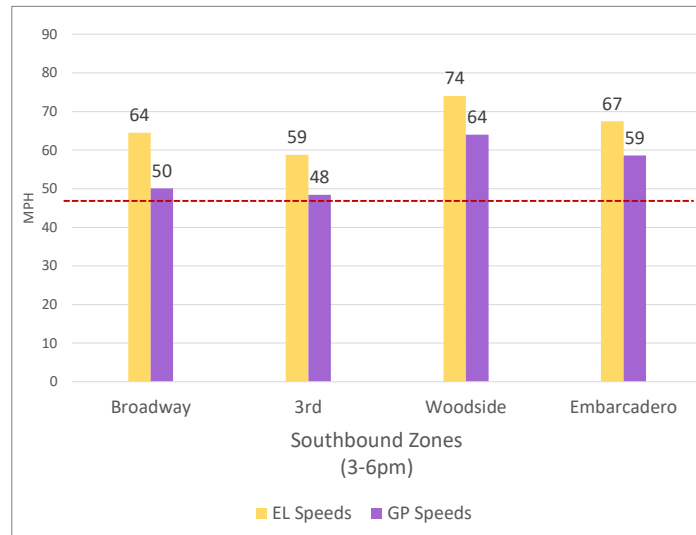
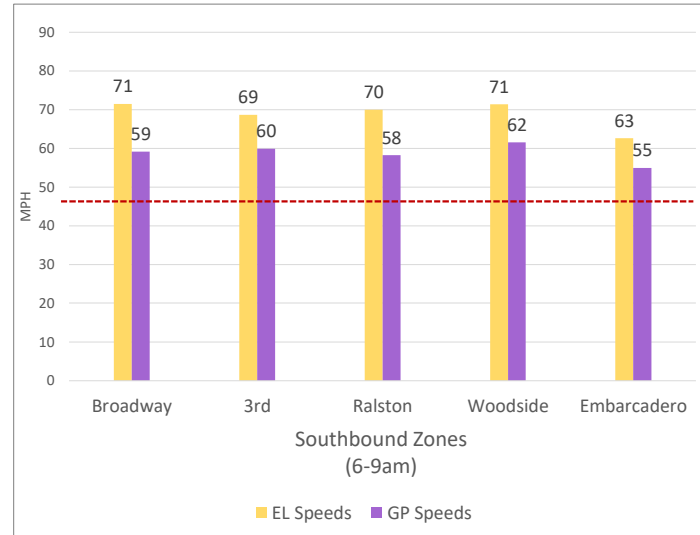
Chart Legend

- Current EL Volume (Feb 08)
- Current GP Volume (Feb 08)
- Current EL Speed (Feb 08)
- Current GP Speed (Feb 08)
- Current Toll (Feb 08)
- Max Operational Toll
- Historic EL Volume (Feb 01)
- Historic GP Volume (Feb 01)
- Historic EL Speed (Feb 01)
- Historic GP Speed (Feb 01)
- Historic Toll (Feb 01)
- Targeted Min. LOS - 45mph

DATA DATE: **Week of 4/7 - 4/11**

2. Toll System Performance

Speed Differential - Directional Peak Periods



Targeted Min. LOS - 45mph