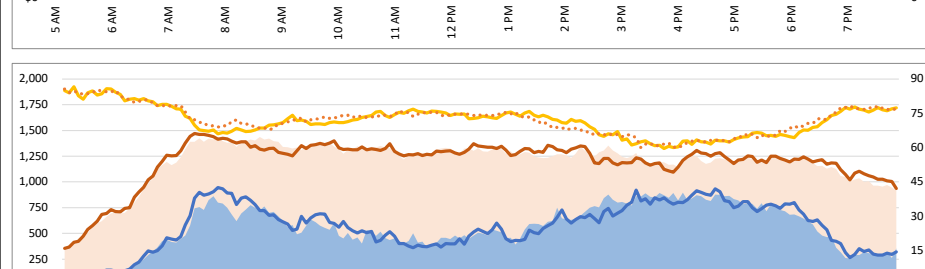
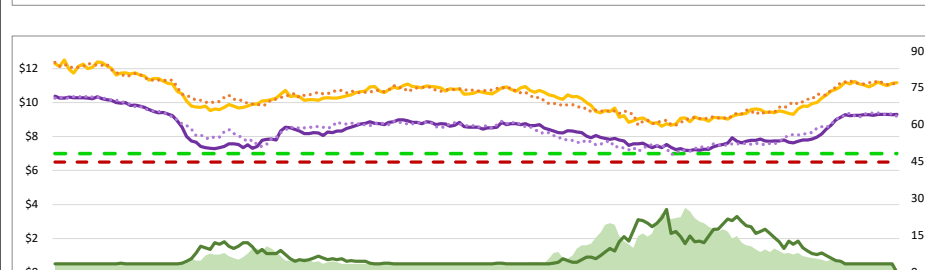
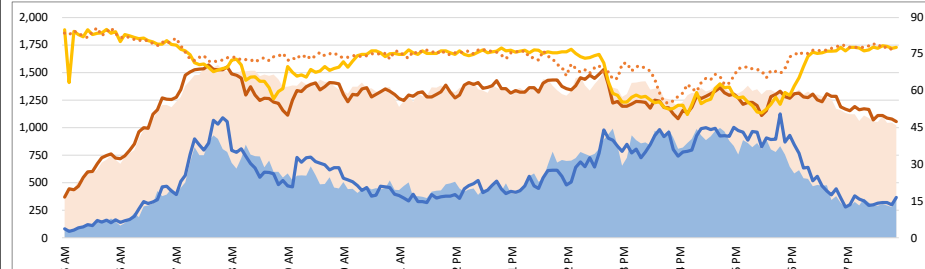
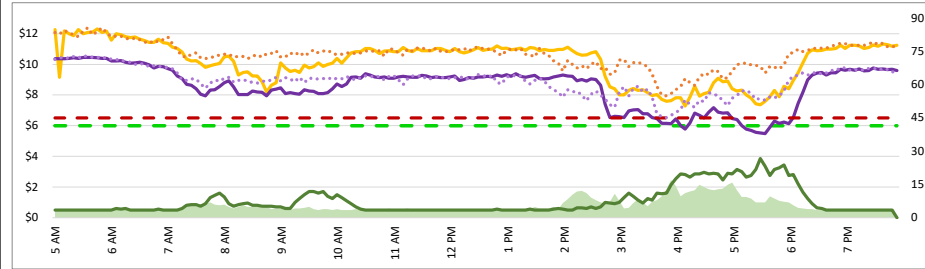
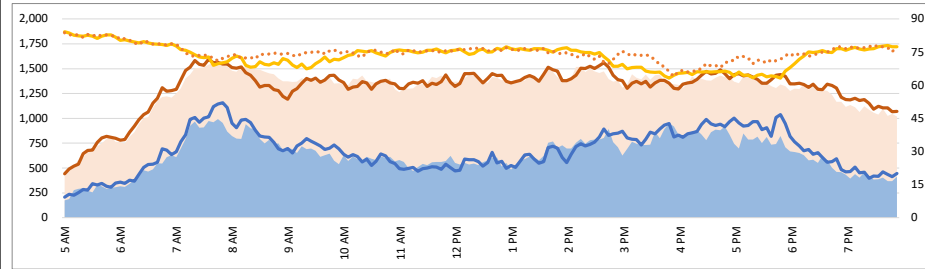
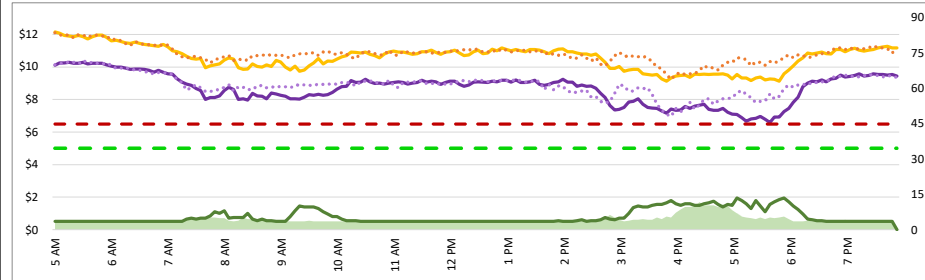


1. Lane Performance

Average Speeds, Volumes & Tolls - Current (Week of 4/15 - 4/19) vs Historic (Week of 4/8 - 4/12)



3740 - Broadway SB

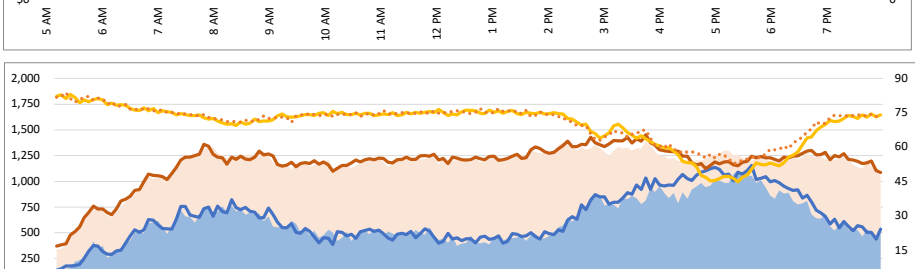
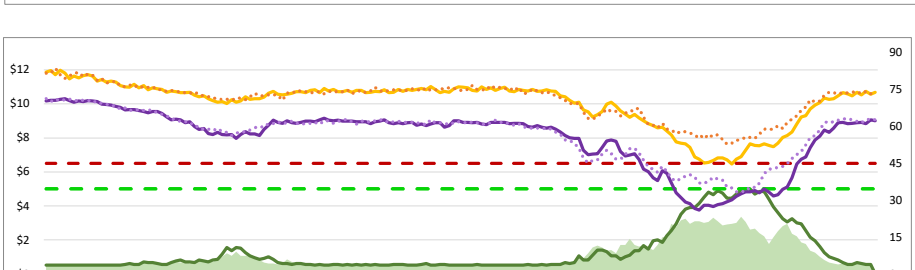
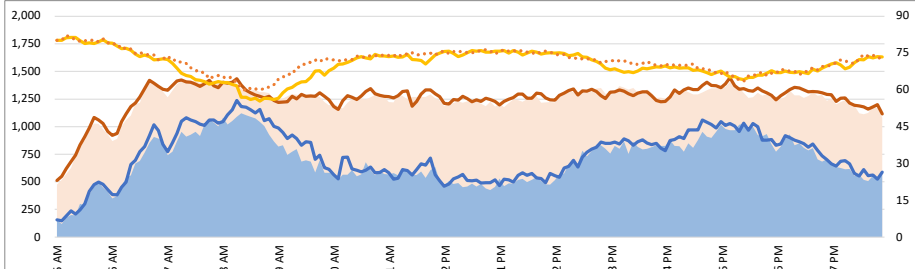
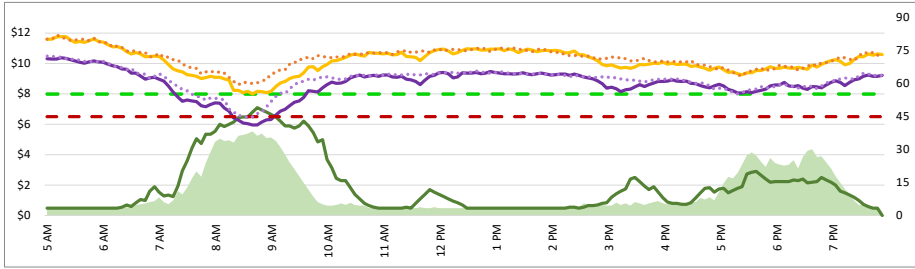
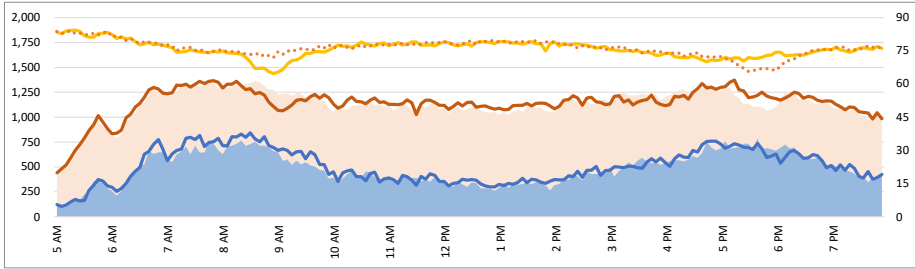
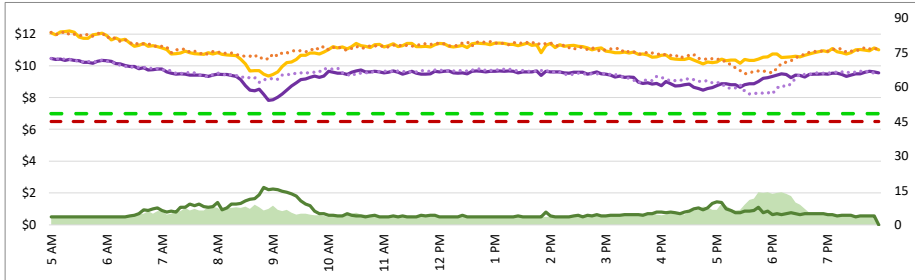
3850 - I-380 NB

3750 - 3rd SB

3840 - Broadway NB

3760 - Ralston SB

3830 - SR 92 NB



Map of SM101 Corridor (Not To Scale) DATA DATE: Week of 4/15 - 4/19

SM101 Express Lanes Corridor Map

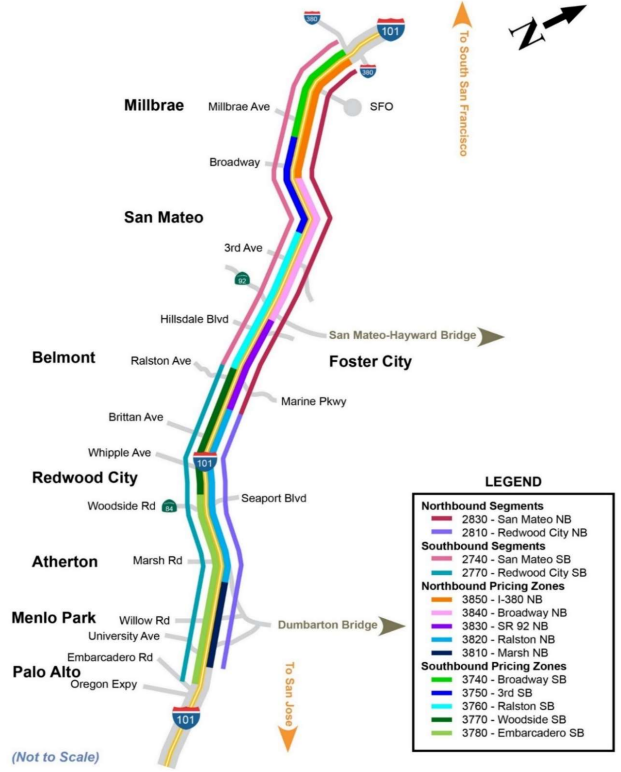
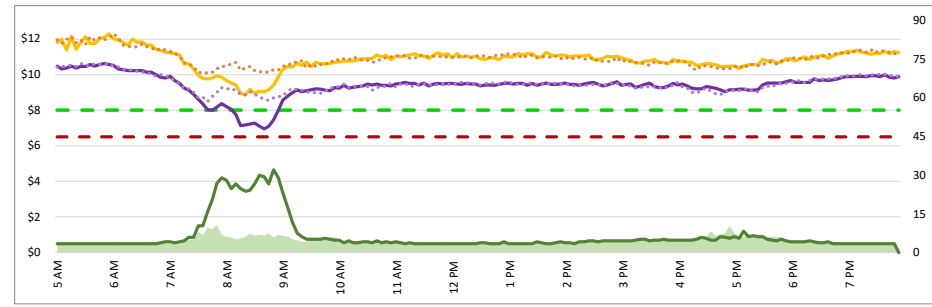


Chart Legend

— Current EL Volume (Feb 08)	— Historic EL Volume (Feb 01)
— Current GP Volume (Feb 08)	— Historic GP Volume (Feb 01)
— Current EL Speed (Feb 08)	— Historic EL Speed (Feb 01)
— Current GP Speed (Feb 08)	— Historic GP Speed (Feb 01)
— Current Toll (Feb 08)	— Historic Toll (Feb 01)
— Max Operational Toll	— Targeted Min. LOS - 45mph

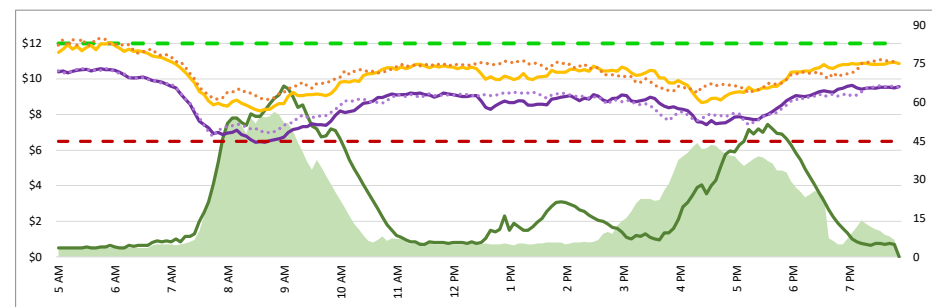
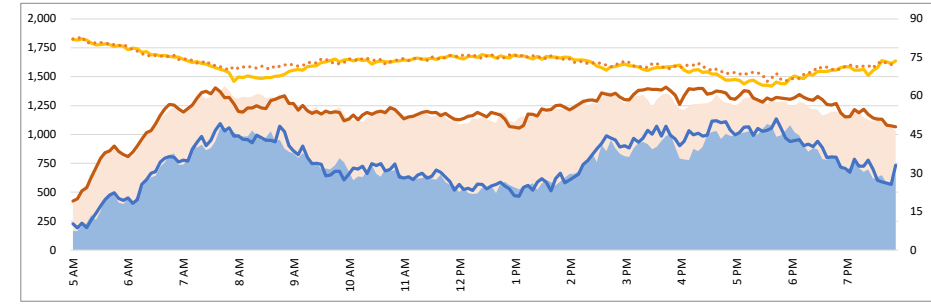
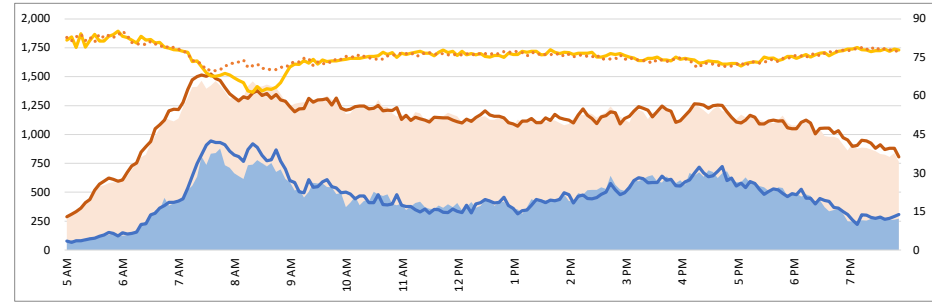
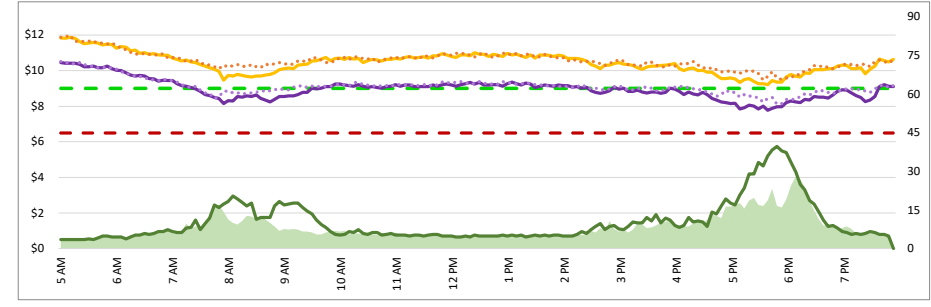
1. Lane Performance

Average Speeds, Volumes & Tolls - Current (Week of 4/15 - 4/19) vs Historic (Week of 4/8 - 4/12)



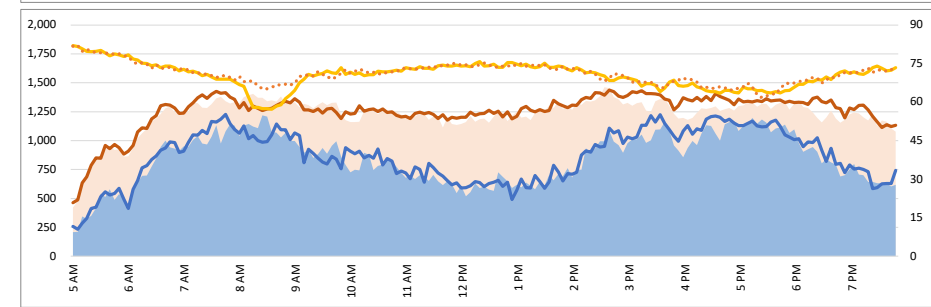
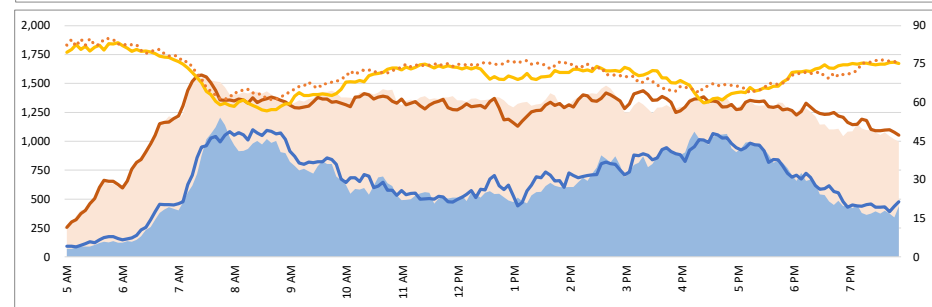
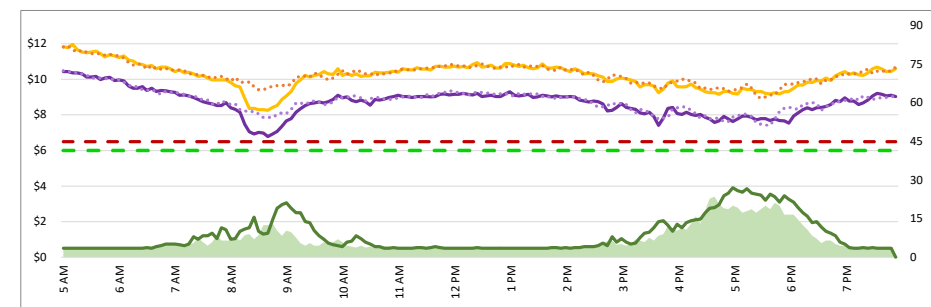
3770 - Woodside SB

3820 - Ralston NB



3780 - Embarcadero SB

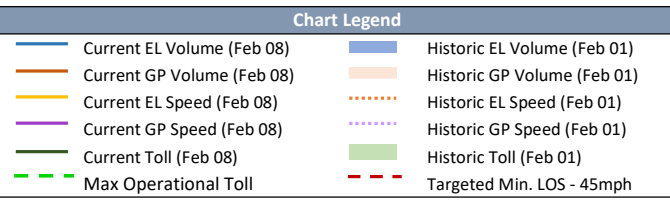
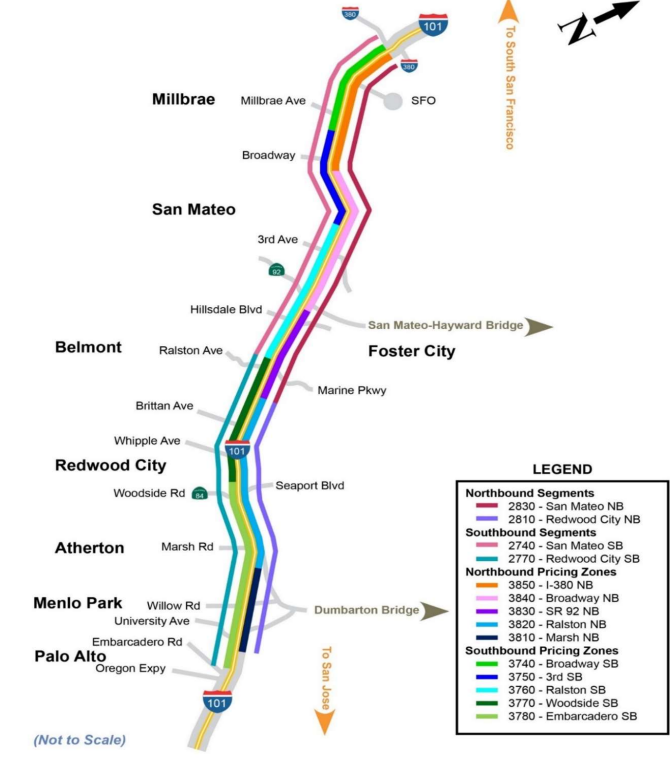
3810 - Marsh NB



DATA DATE: Week of 4/15 - 4/19

Map of SM101 Corridor (Not To Scale)

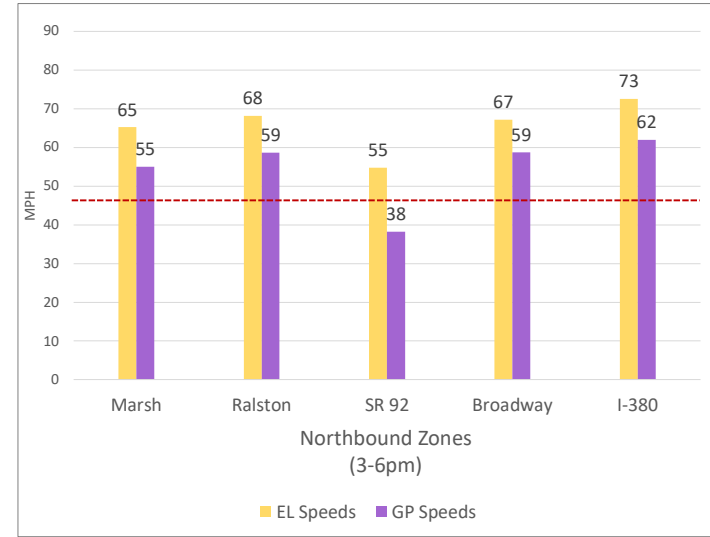
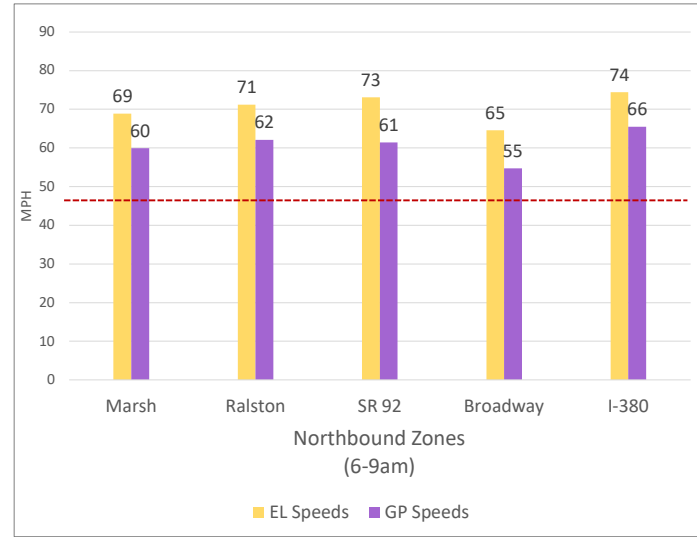
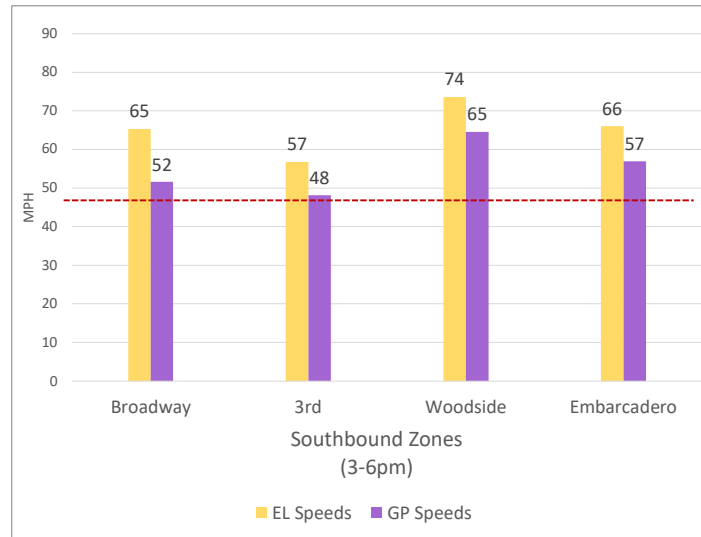
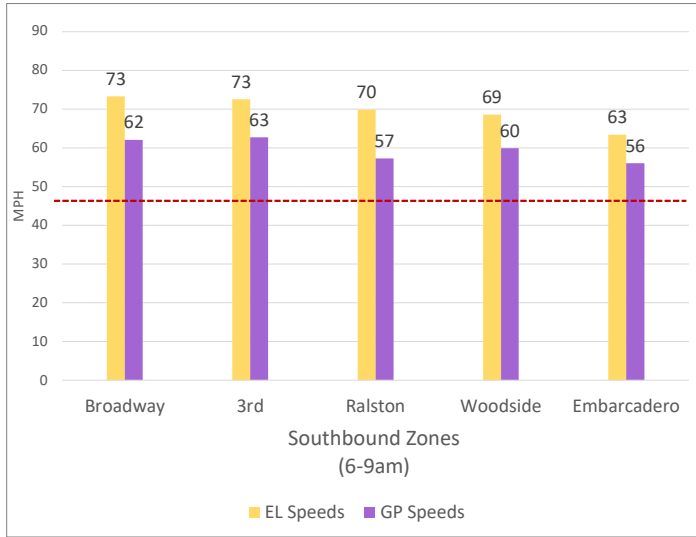
SM101 Express Lanes Corridor Map



DATA DATE: **Week of 4/15 - 4/19**

2. Toll System Performance

Speed Differential - Directional Peak Periods



--- Targeted Min. LOS - 45mph