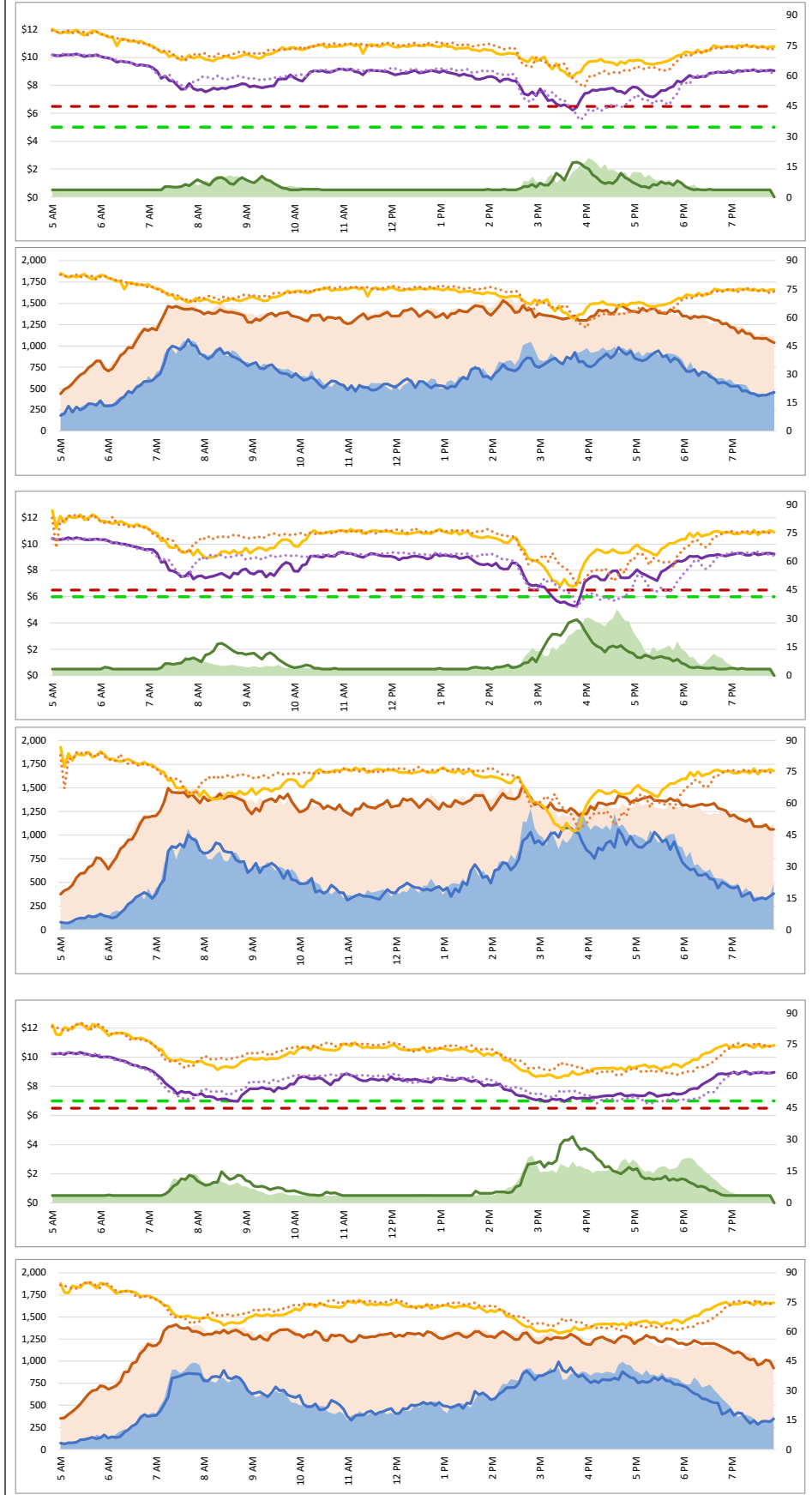


1. Lane Performance

Average Speeds, Volumes & Tolls - Current (Week of 3/25 - 3/29) vs Historic (Week of 3/18 - 3/22)



3740 - Broadway SB

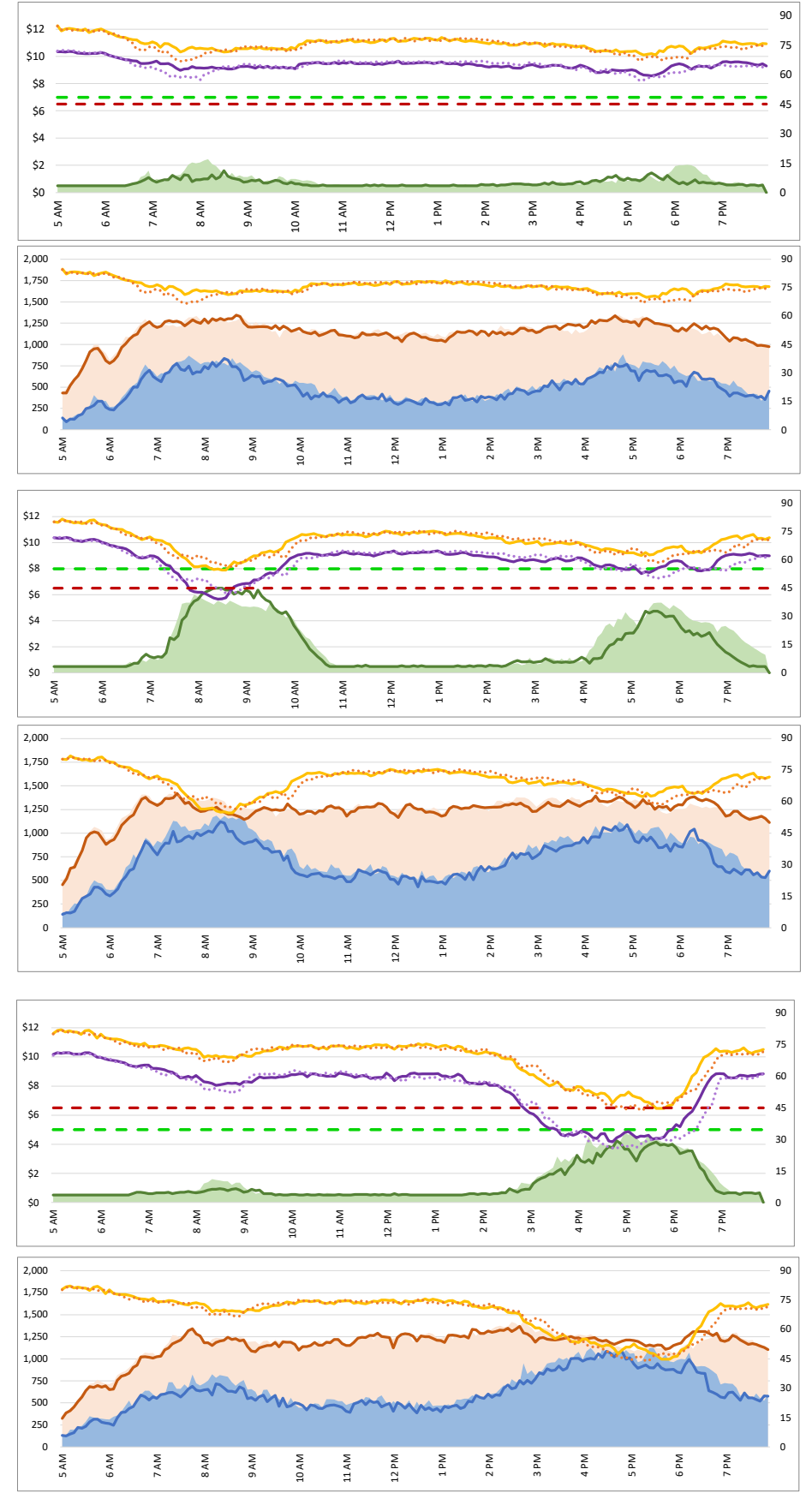
3850 - I-380 NB

3750 - 3rd SB

3840 - Broadway NB

3760 - Ralston SB

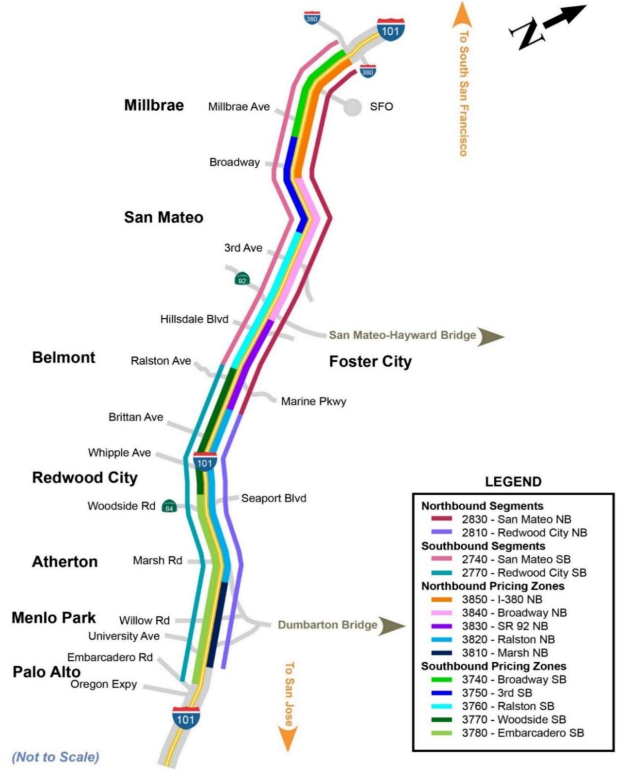
3830 - SR 92 NB



DATA DATE: Week of 3/25 - 3/29

Map of SM101 Corridor (Not To Scale)

SM101 Express Lanes Corridor Map

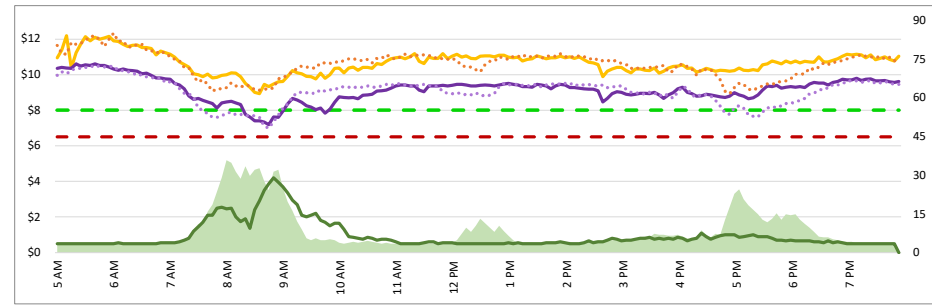


- LEGEND**
- Northbound Segments**
 - 2830 - San Mateo NB
 - 2810 - Redwood City NB
 - Southbound Segments**
 - 2740 - San Mateo SB
 - 2770 - Redwood City SB
 - Northbound Pricing Zones**
 - 3850 - I-380 NB
 - 3840 - Broadway NB
 - 3830 - SR 92 NB
 - 3820 - Ralston NB
 - 3810 - Marsh NB
 - Southbound Pricing Zones**
 - 3740 - Broadway SB
 - 3750 - 3rd SB
 - 3760 - Ralston SB
 - 3770 - Woodside SB
 - 3780 - Embarcadero SB

- Chart Legend**
- Current EL Volume (Feb 08)
 - Current GP Volume (Feb 08)
 - Current EL Speed (Feb 08)
 - Current GP Speed (Feb 08)
 - Current Toll (Feb 08)
 - Max Operational Toll
 - Historic EL Volume (Feb 01)
 - Historic GP Volume (Feb 01)
 - Historic EL Speed (Feb 01)
 - Historic GP Speed (Feb 01)
 - Historic Toll (Feb 01)
 - Targeted Min. LOS - 45mph

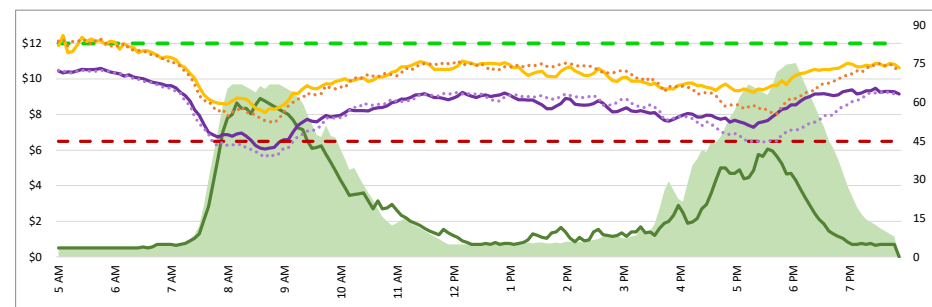
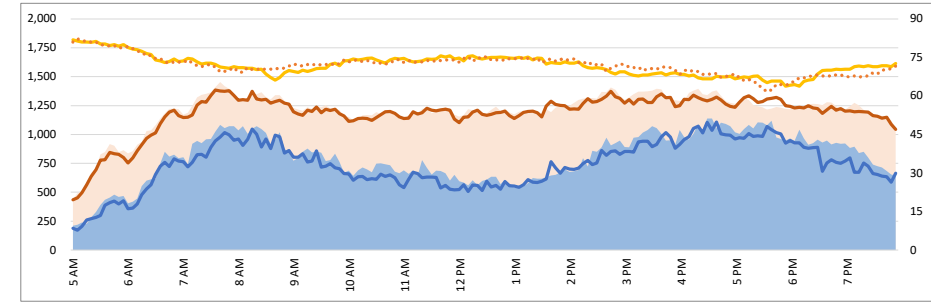
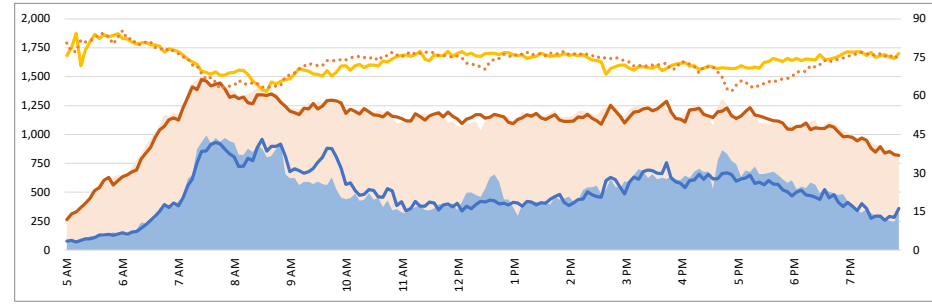
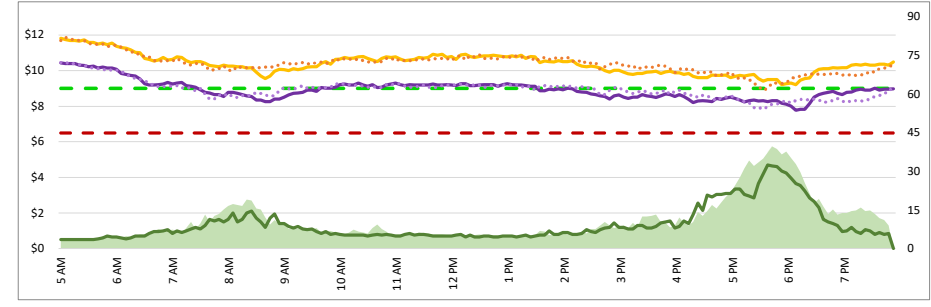
1. Lane Performance

Average Speeds, Volumes & Tolls - Current (Week of 3/25 - 3/29) vs Historic (Week of 3/18 - 3/22)



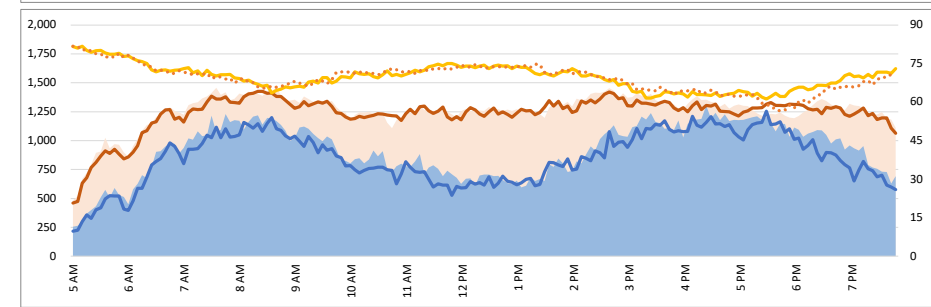
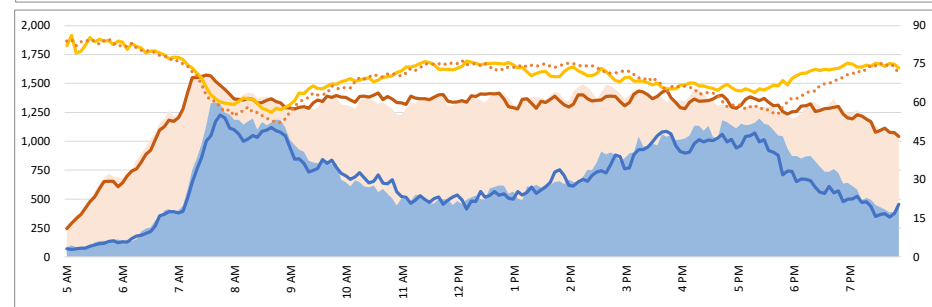
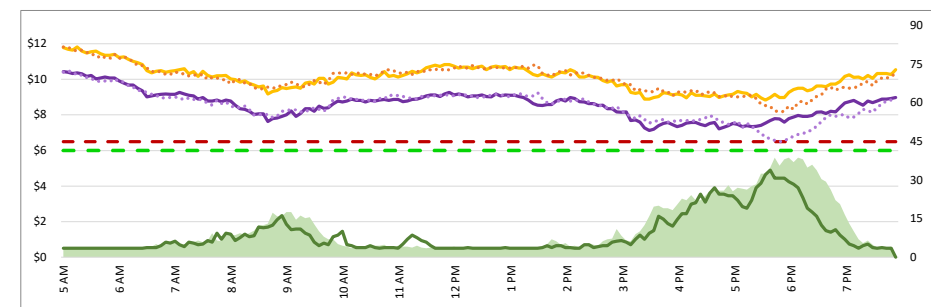
3770 - Woodside SB

3820 - Ralston NB



3780 - Embarcadero SB

3810 - Marsh NB



DATA DATE: Week of 3/25 - 3/29

Map of SM101 Corridor (Not To Scale)

SM101 Express Lanes Corridor Map

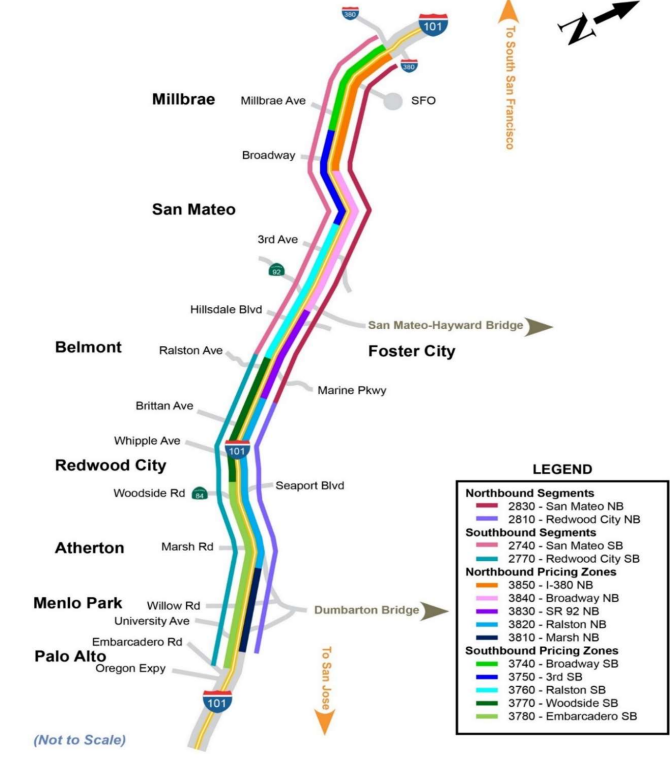


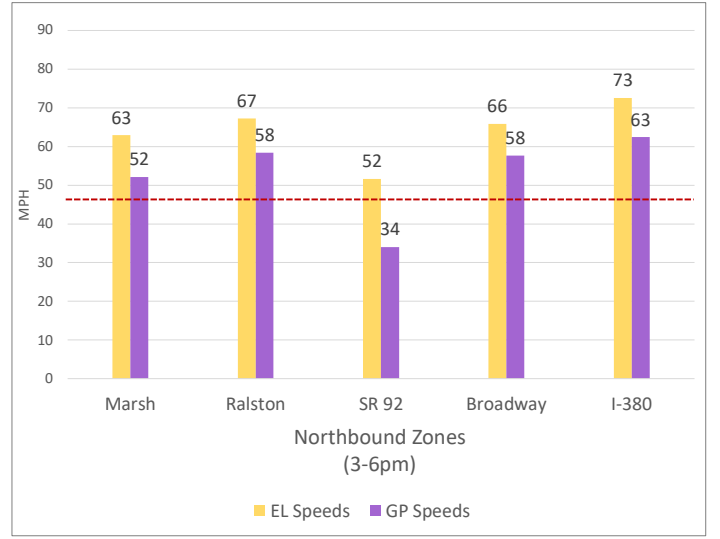
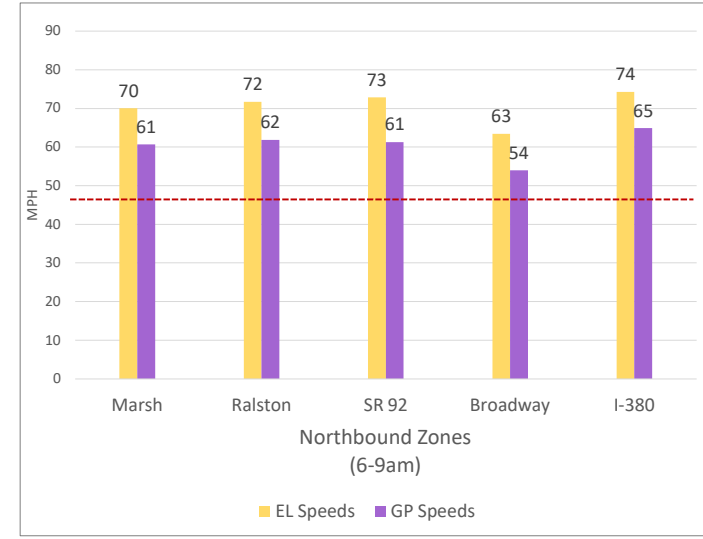
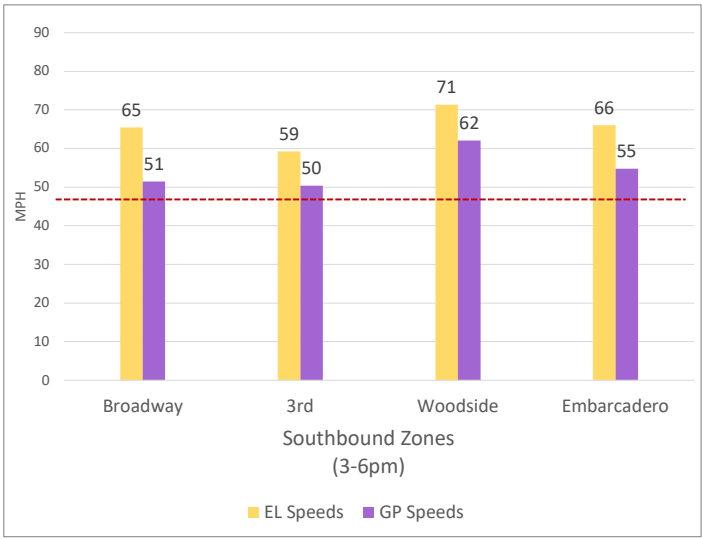
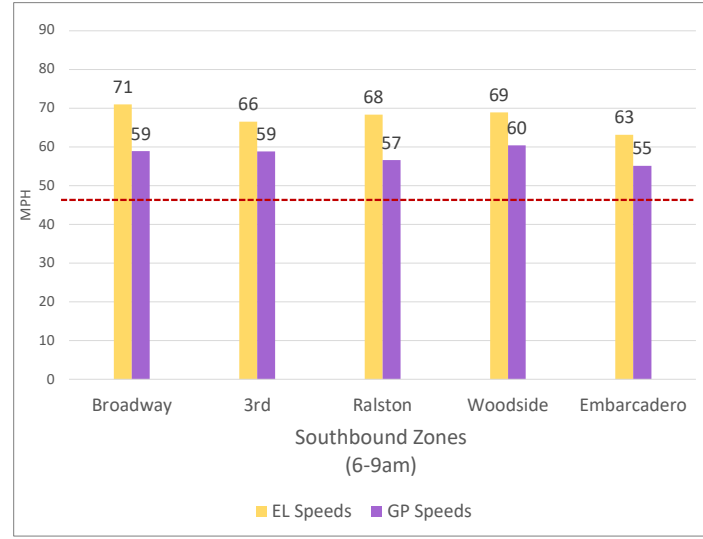
Chart Legend

— Current EL Volume (Feb 08)	— Historic EL Volume (Feb 01)
— Current GP Volume (Feb 08)	— Historic GP Volume (Feb 01)
— Current EL Speed (Feb 08)	— Historic EL Speed (Feb 01)
— Current GP Speed (Feb 08)	— Historic GP Speed (Feb 01)
— Current Toll (Feb 08)	— Historic Toll (Feb 01)
— Max Operational Toll	— Targeted Min. LOS - 45mph

Week of 3/25 - 3/29

2. Toll System Performance

Speed Differential - Directional Peak Periods



--- Targeted Min. LOS - 45mph