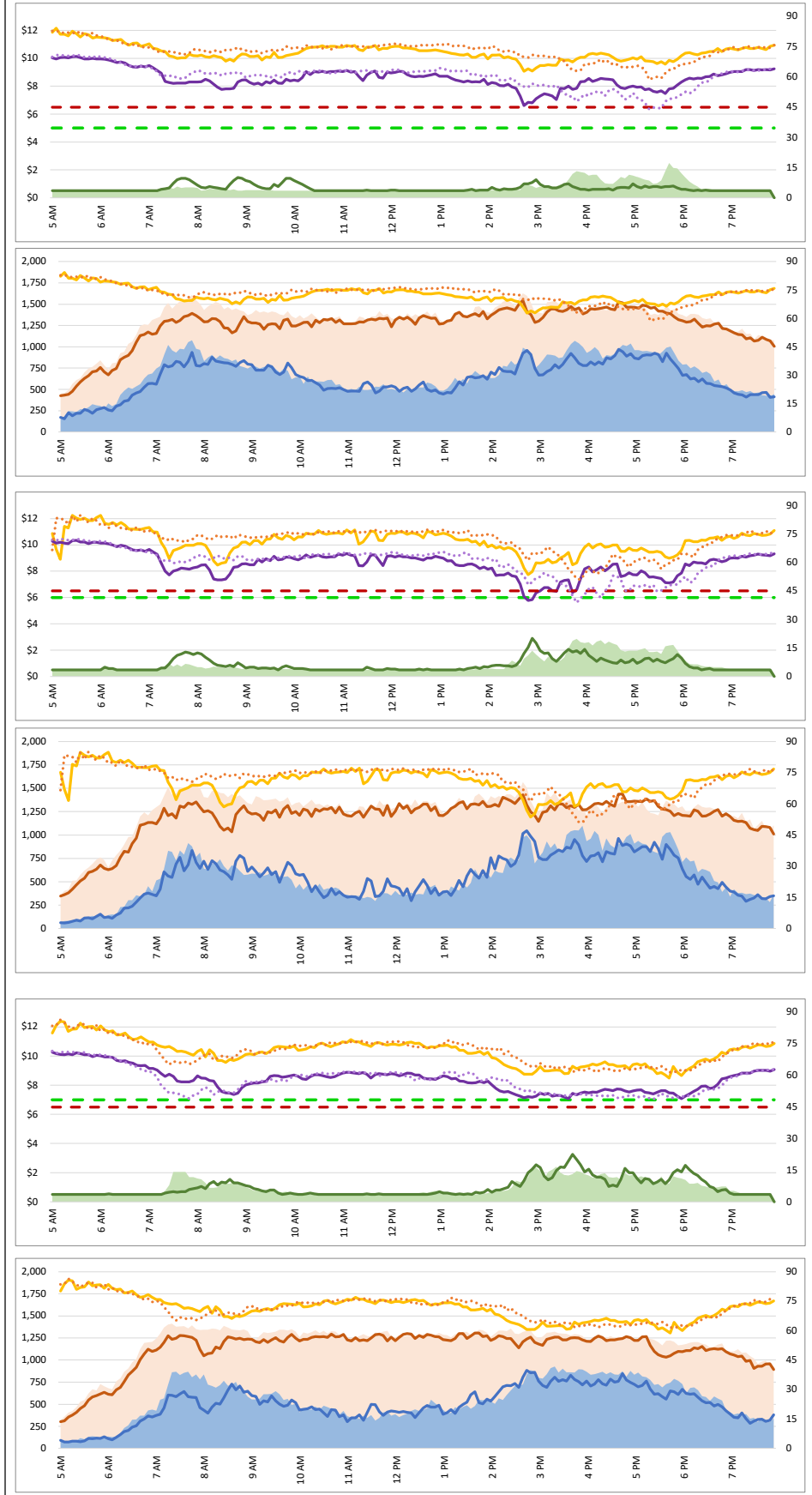
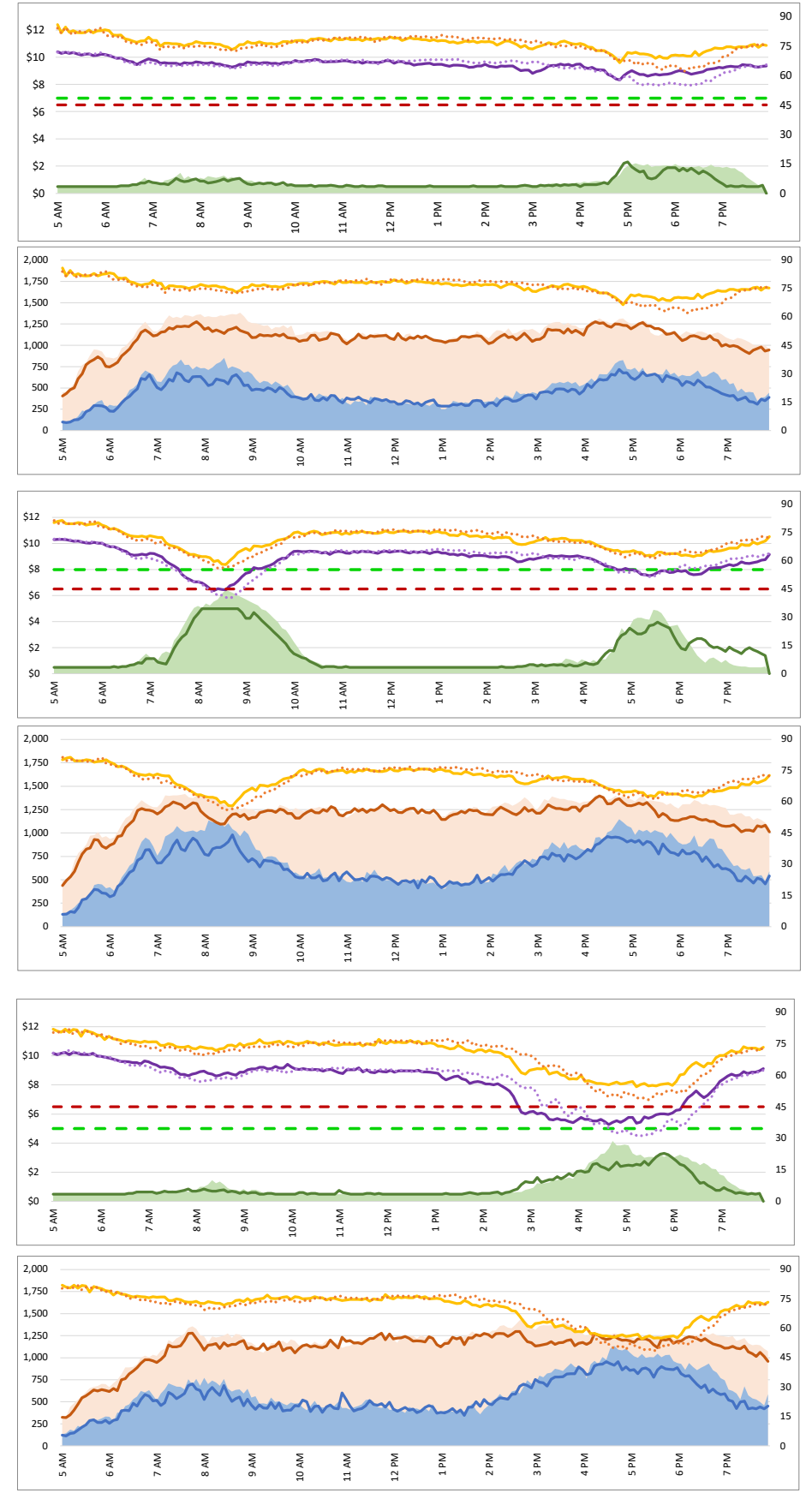


1. Lane Performance

Average Speeds, Volumes & Tolls - Current (Week of 2/19 - 2/23) vs Historic (Week of 2/12 - 2/16)

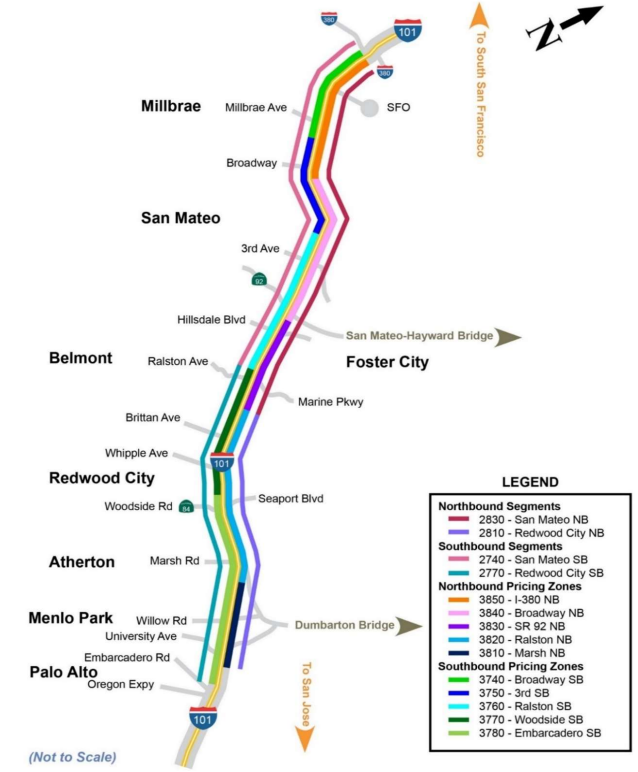


3740 - Broadway SB  
3750 - 3rd SB  
3760 - Ralston SB  
3840 - Broadway NB  
3850 - I-380 NB  
3860 - SR 92 NB



Map of SM101 Corridor (Not To Scale) DATA DATE: Week of 2/19 - 2/23

SM101 Express Lanes Corridor Map

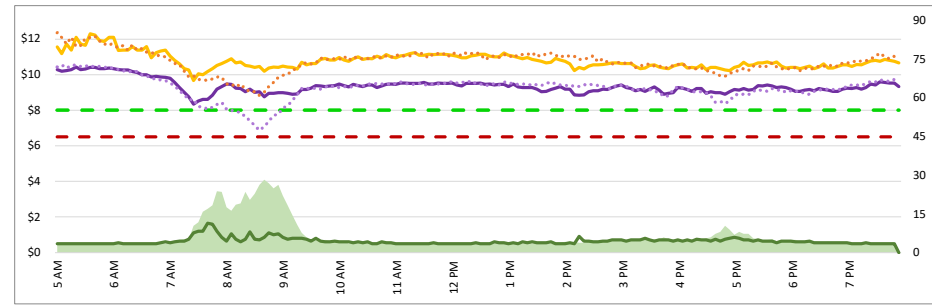


- LEGEND**
- Northbound Segments**
    - 2830 - San Mateo NB
    - 2810 - Redwood City NB
  - Southbound Segments**
    - 2740 - San Mateo SB
    - 2770 - Redwood City SB
  - Northbound Pricing Zones**
    - 3840 - Broadway NB
    - 3830 - SR 92 NB
    - 3820 - Ralston NB
    - 3810 - Marsh NB
  - Southbound Pricing Zones**
    - 3740 - Broadway SB
    - 3750 - 3rd SB
    - 3760 - Ralston SB
    - 3770 - Woodside SB
    - 3780 - Embarcadero SB

- Chart Legend**
- Current EL Volume (Feb 08)
  - Current GP Volume (Feb 08)
  - Current EL Speed (Feb 08)
  - Current GP Speed (Feb 08)
  - Current Toll (Feb 08)
  - Max Operational Toll
  - Historic EL Volume (Feb 01)
  - Historic GP Volume (Feb 01)
  - Historic EL Speed (Feb 01)
  - Historic GP Speed (Feb 01)
  - Historic Toll (Feb 01)
  - Targeted Min. LOS - 45mph

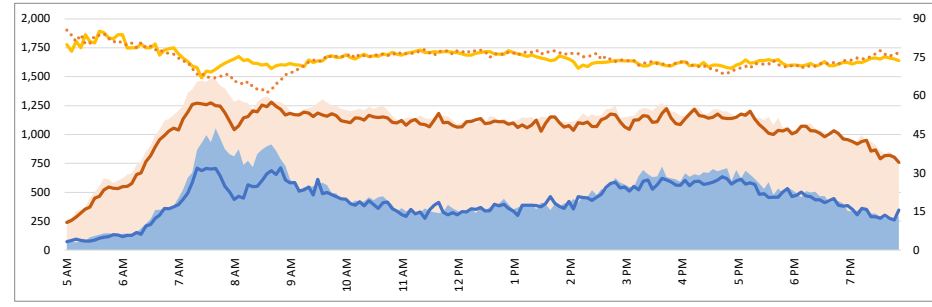
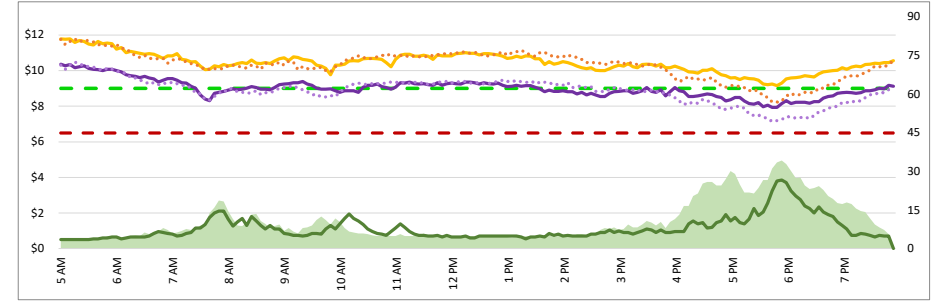
1. Lane Performance

Average Speeds, Volumes & Tolls - Current (Week of 2/19 - 2/23) vs Historic (Week of 2/12 - 2/16)



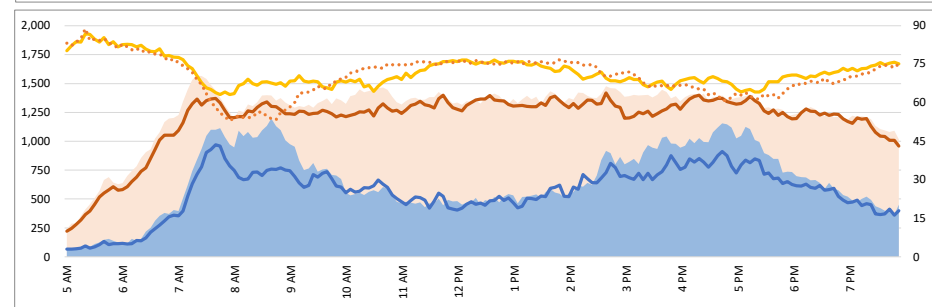
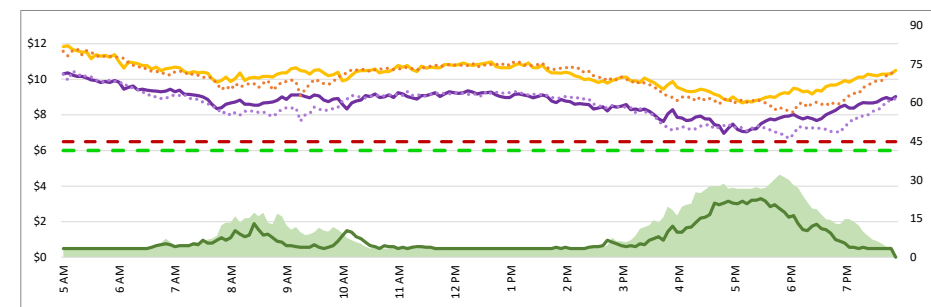
3770 - Woodside SB

3820 - Ralston NB



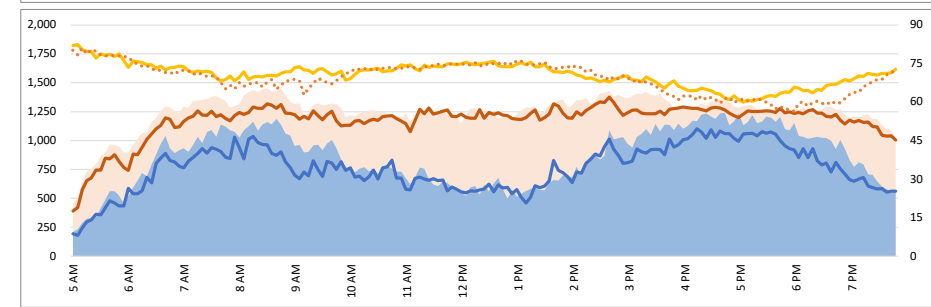
3780 - Embarcadero SB

3810 - Marsh NB



3780 - Embarcadero SB

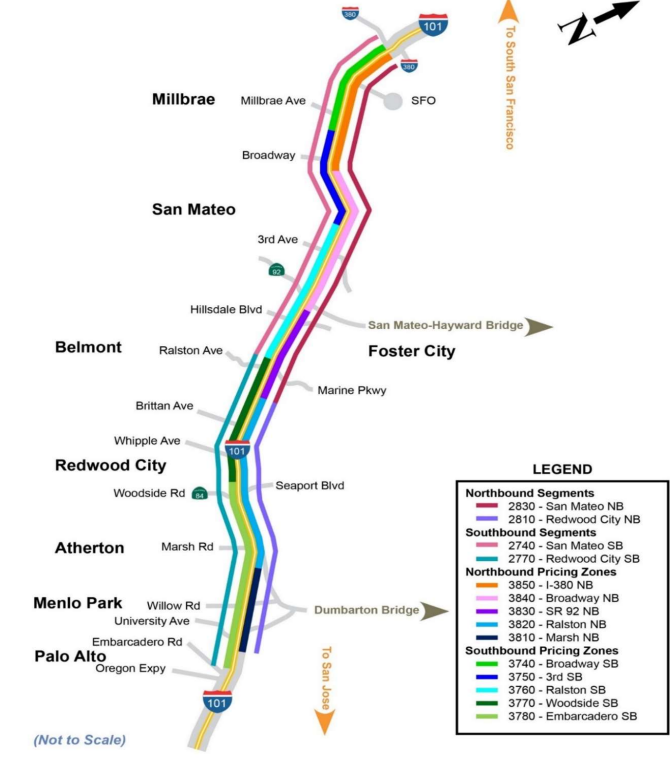
3810 - Marsh NB



DATA DATE: Week of 2/19 - 2/23

Map of SM101 Corridor (Not To Scale)

SM101 Express Lanes Corridor Map



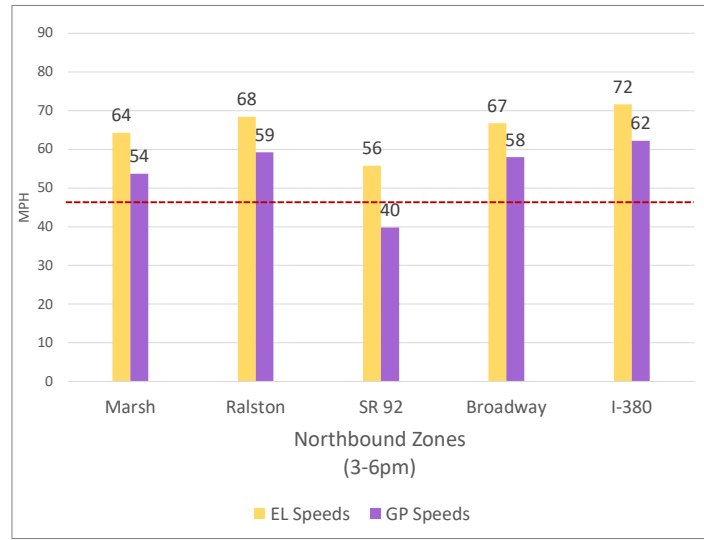
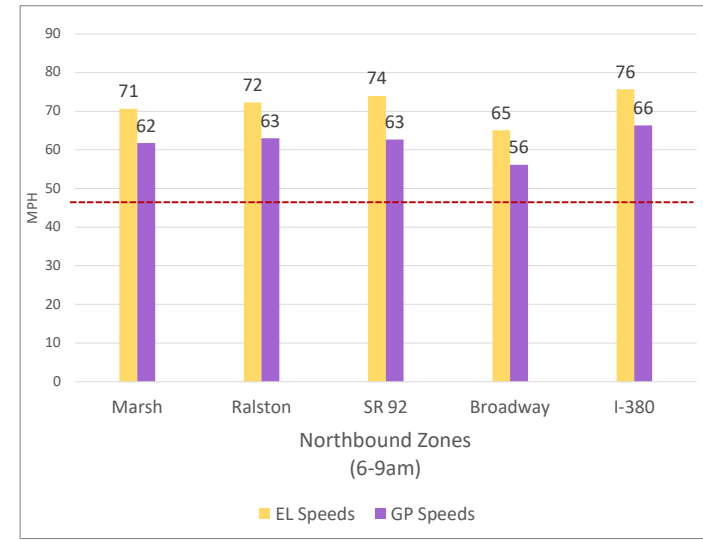
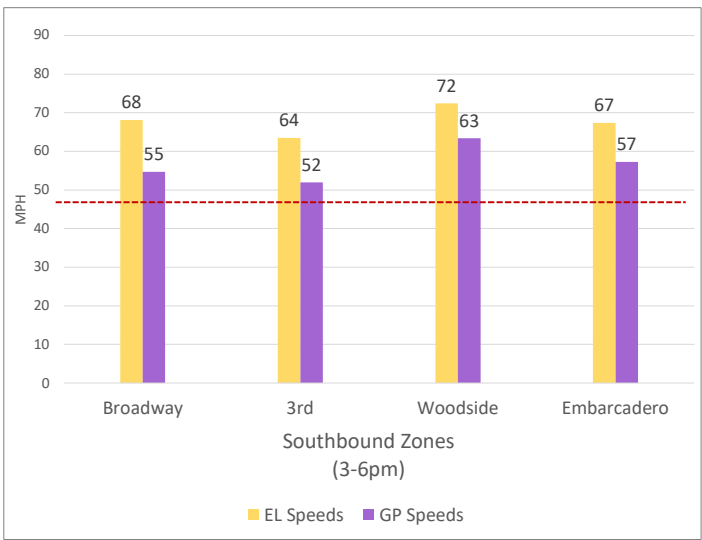
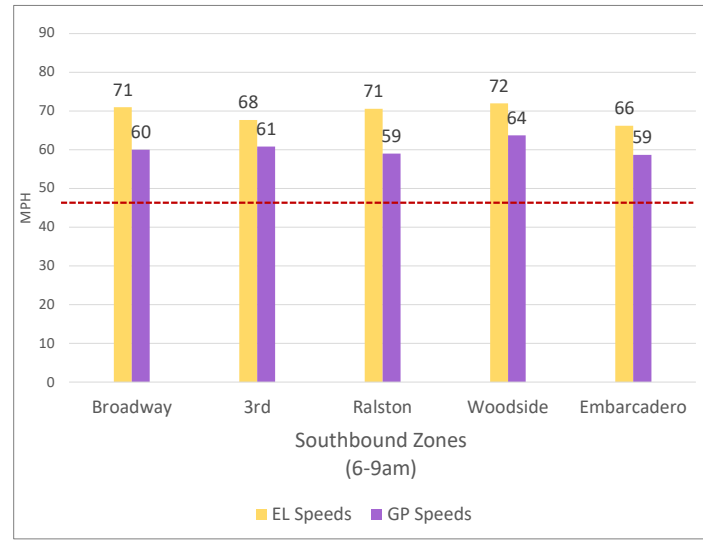
- LEGEND**
- Northbound Segments**
    - 2830 - San Mateo NB
    - 2810 - Redwood City NB
  - Southbound Segments**
    - 2740 - San Mateo SB
    - 2770 - Redwood City SB
  - Northbound Pricing Zones**
    - 3850 - I-380 NB
    - 3840 - Broadway NB
    - 3830 - SR 92 NB
    - 3820 - Ralston NB
    - 3810 - Marsh NB
  - Southbound Pricing Zones**
    - 3740 - Broadway SB
    - 3750 - 3rd SB
    - 3760 - Ralston SB
    - 3770 - Woodside SB
    - 3780 - Embarcadero SB

- Chart Legend**
- Current EL Volume (Feb 08)
  - Current GP Volume (Feb 08)
  - Current EL Speed (Feb 08)
  - Current GP Speed (Feb 08)
  - Current Toll (Feb 08)
  - Max Operational Toll
  - Historic EL Volume (Feb 01)
  - Historic GP Volume (Feb 01)
  - Historic EL Speed (Feb 01)
  - Historic GP Speed (Feb 01)
  - Historic Toll (Feb 01)
  - Targeted Min. LOS - 45mph

DATA DATE: **Week of 2/19 - 2/23**

2. Toll System Performance

Speed Differential - Directional Peak Periods



- - Targeted Min. LOS - 45mph