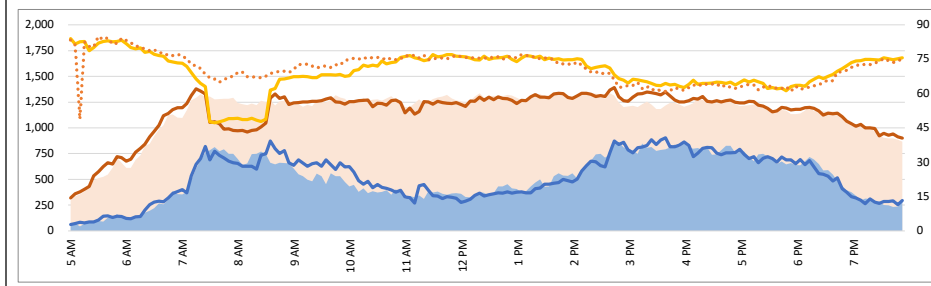
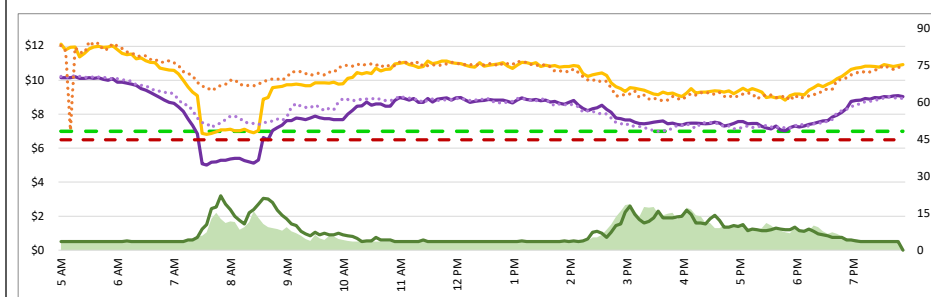
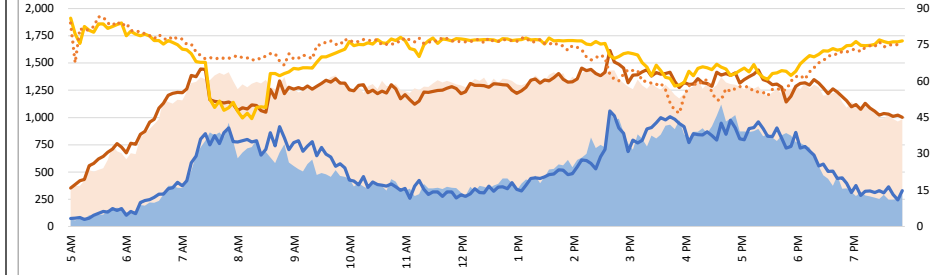
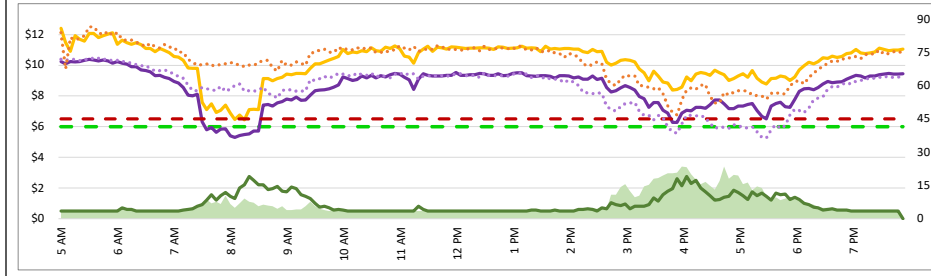
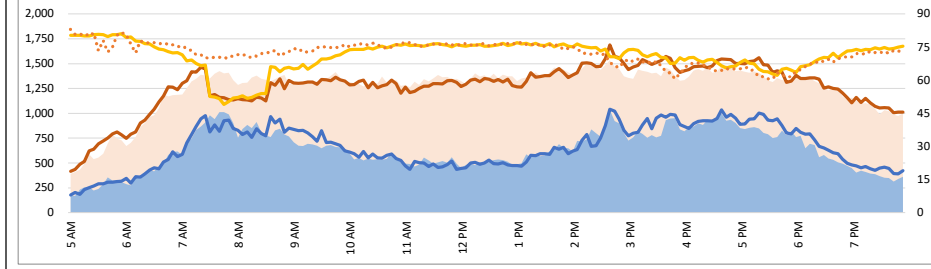
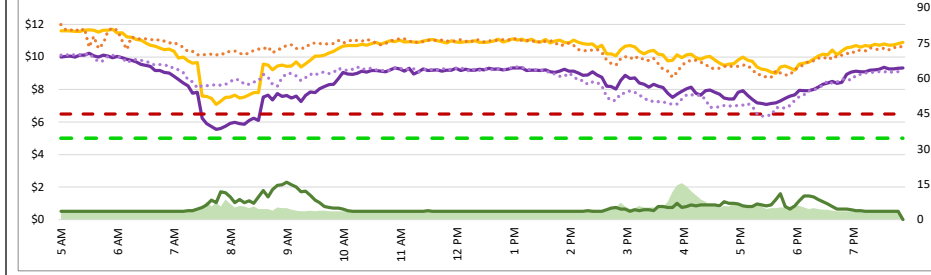


1. Lane Performance

Average Speeds, Volumes & Tolls - Current (Week of 1/22 - 1/26) vs Historic (Week of 1/15 - 1/19)



3740 - Broadway SB

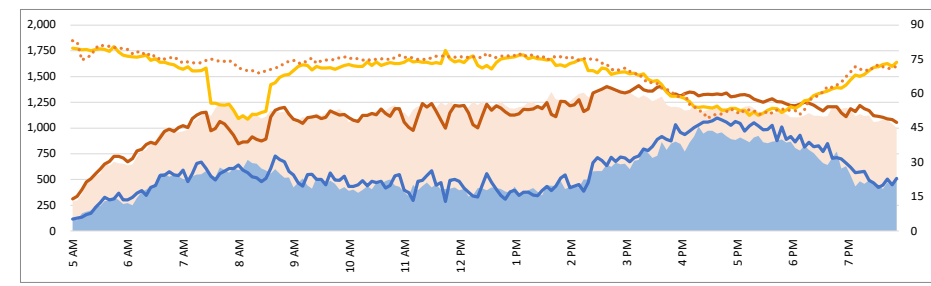
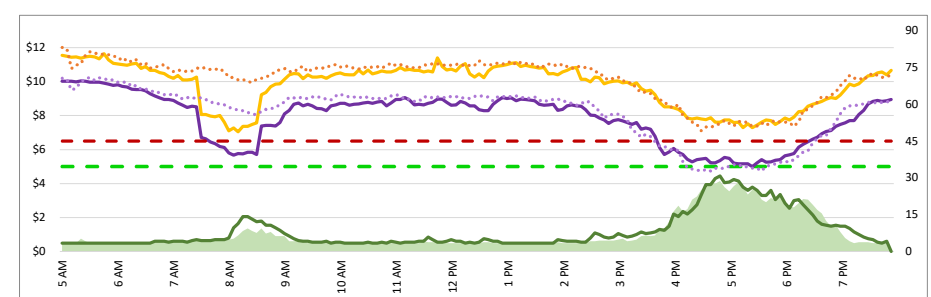
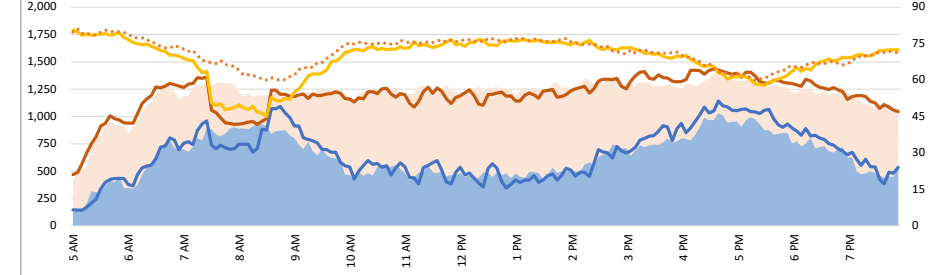
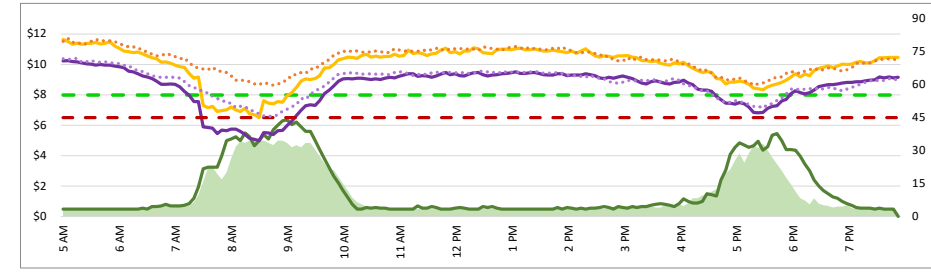
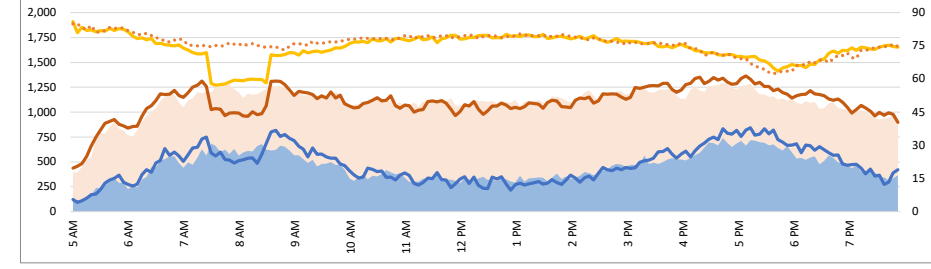
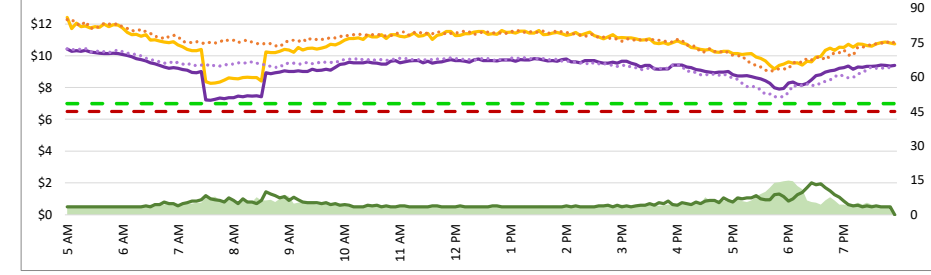
3850 - I-380 NB

3750 - 3rd SB

3840 - Broadway NB

3760 - Ralston SB

3830 - SR 92 NB



Map of SM101 Corridor (Not To Scale) DATA DATE: Week of 1/22 - 1/26

SM101 Express Lanes Corridor Map

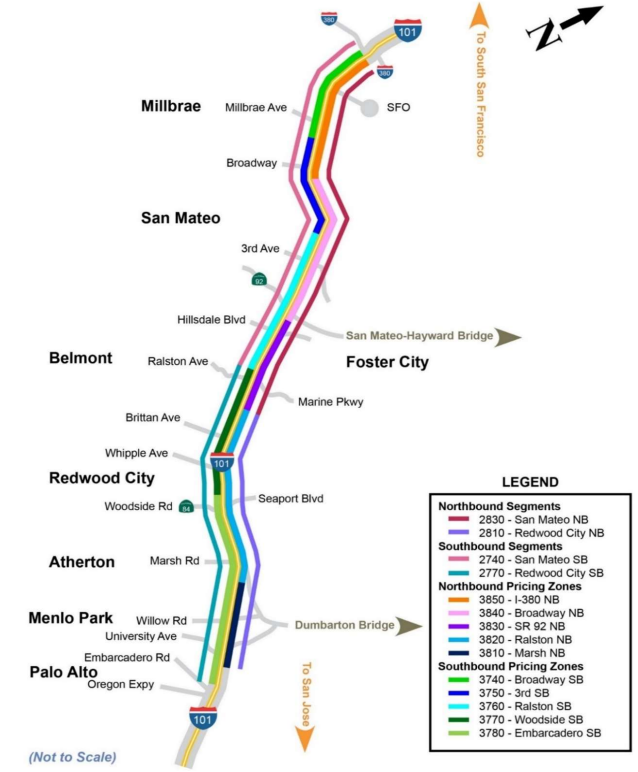
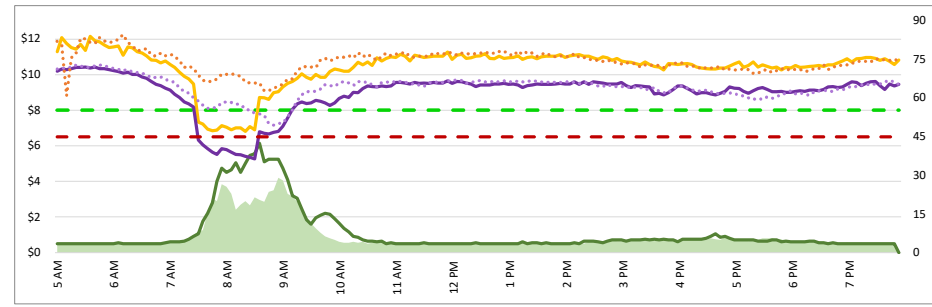


Chart Legend

— Current EL Volume (Feb 08)	— Historic EL Volume (Feb 01)
— Current GP Volume (Feb 08)	— Historic GP Volume (Feb 01)
— Current EL Speed (Feb 08)	— Historic EL Speed (Feb 01)
— Current GP Speed (Feb 08)	— Historic GP Speed (Feb 01)
— Current Toll (Feb 08)	— Historic Toll (Feb 01)
— Max Operational Toll	— Targeted Min. LOS - 45mph

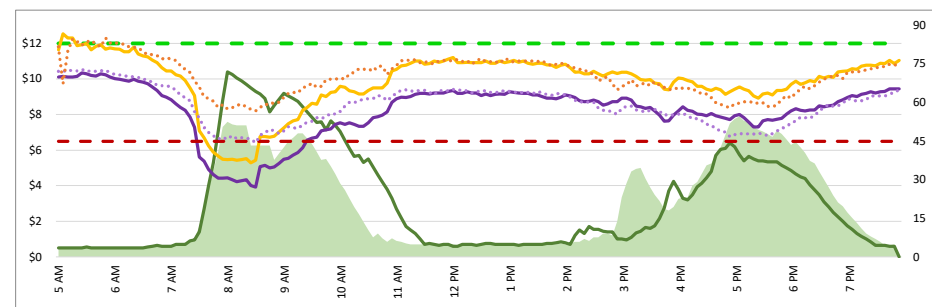
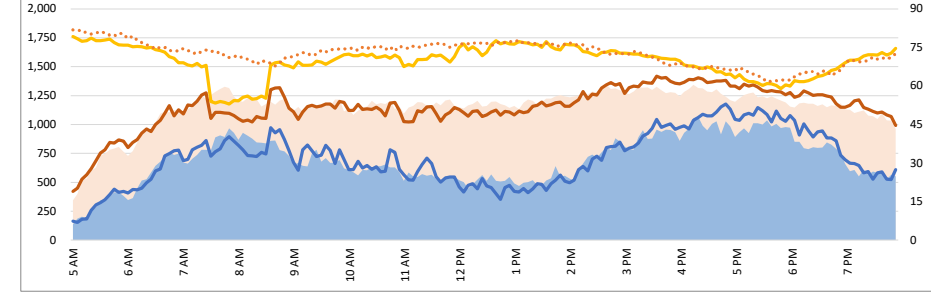
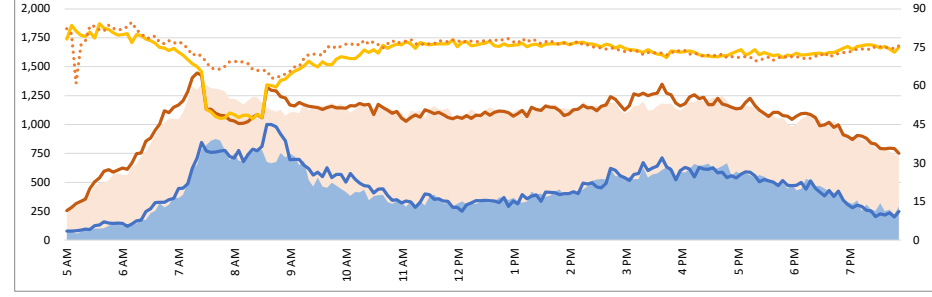
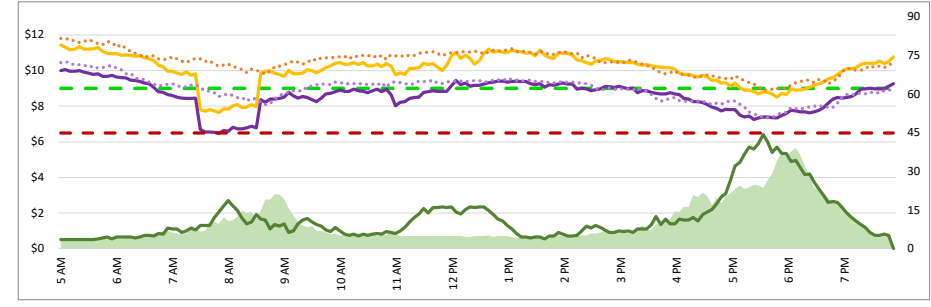
1. Lane Performance

Average Speeds, Volumes & Tolls - Current (Week of 1/22 - 1/26) vs Historic (Week of 1/15 - 1/19)



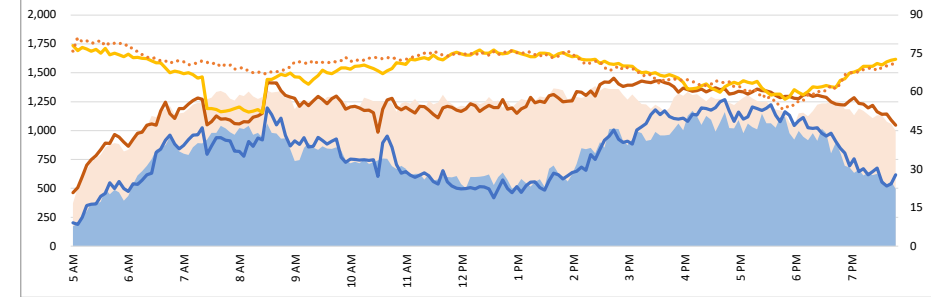
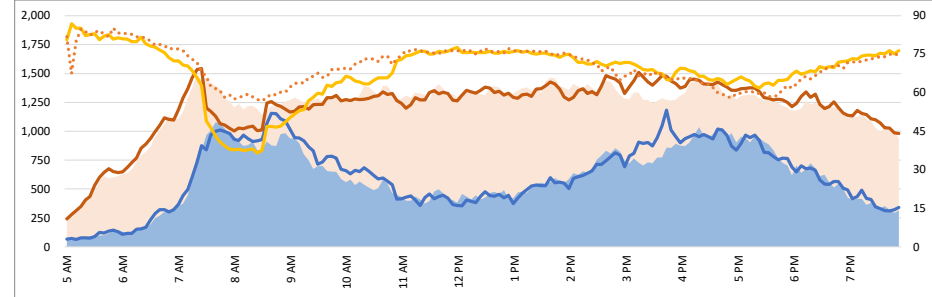
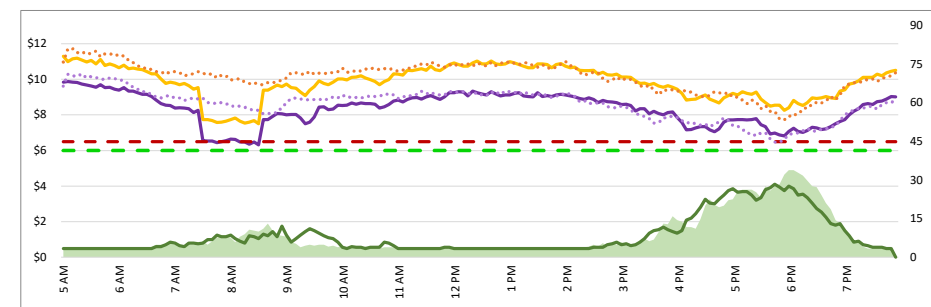
3770 - Woodside SB

3820 - Ralston NB



3780 - Embarcadero SB

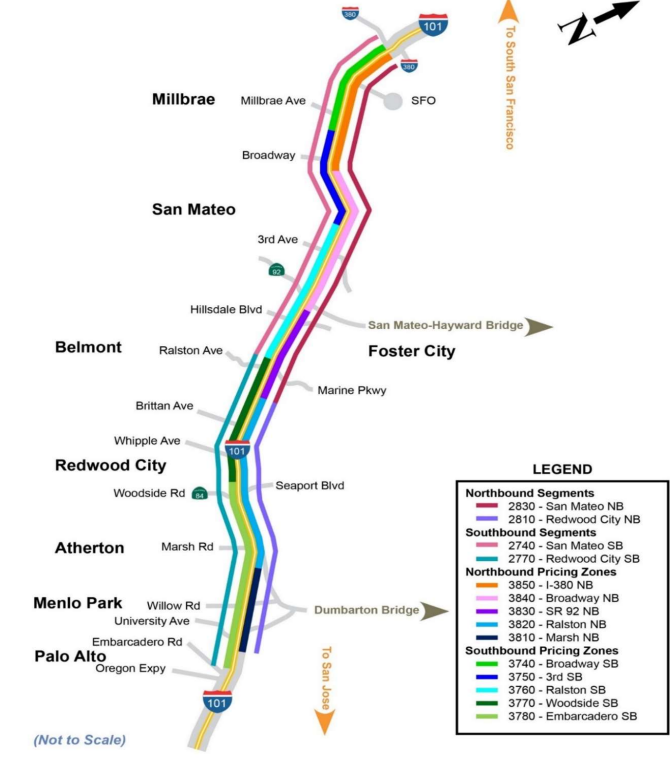
3810 - Marsh NB



DATA DATE: Week of 1/22 - 1/26

Map of SM101 Corridor (Not To Scale)

SM101 Express Lanes Corridor Map



- LEGEND**
- Northbound Segments**
    - 2830 - San Mateo NB
    - 2810 - Redwood City NB
  - Southbound Segments**
    - 2740 - San Mateo SB
    - 2770 - Redwood City SB
  - Northbound Pricing Zones**
    - 3850 - I-380 NB
    - 3840 - Broadway NB
    - 3830 - SR 92 NB
    - 3820 - Ralston NB
    - 3810 - Marsh NB
  - Southbound Pricing Zones**
    - 3740 - Broadway SB
    - 3750 - 3rd SB
    - 3760 - Ralston SB
    - 3770 - Woodside SB
    - 3780 - Embarcadero SB

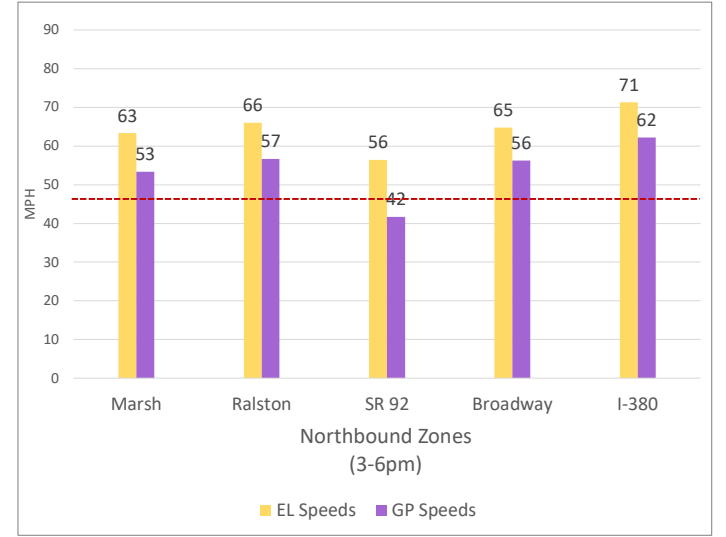
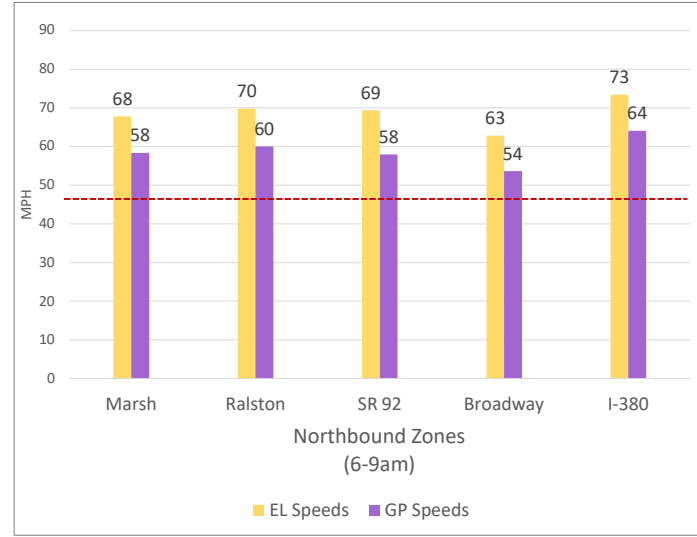
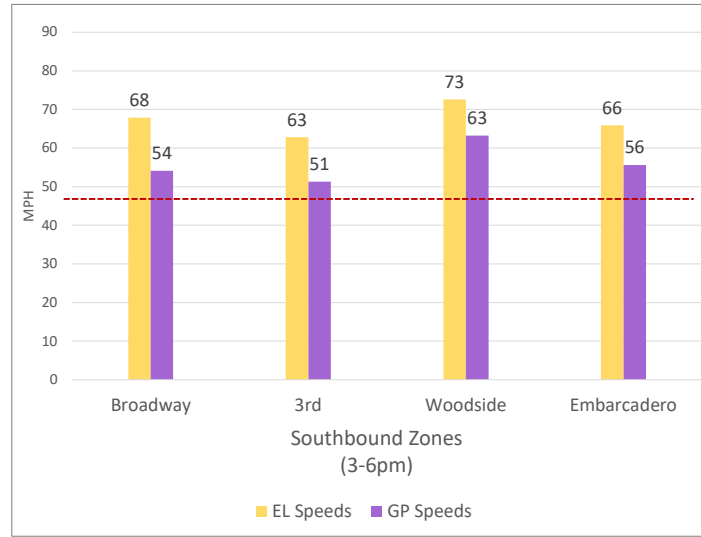
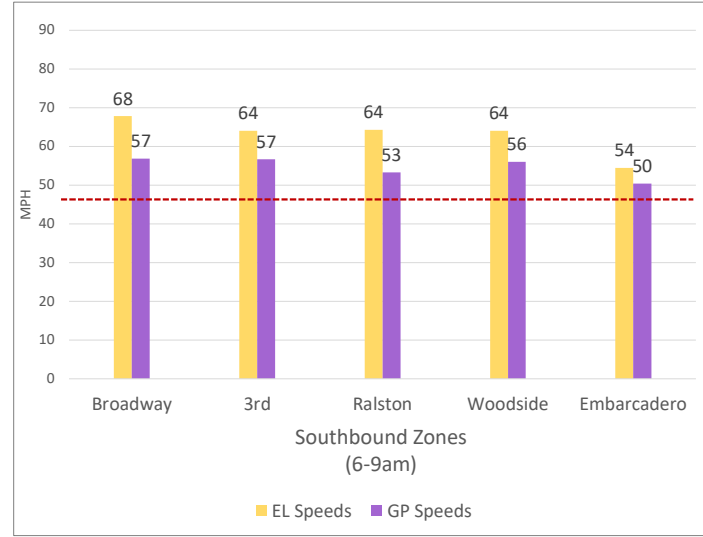
Chart Legend

- Current EL Volume (Feb 08)
- Current GP Volume (Feb 08)
- Current EL Speed (Feb 08)
- Current GP Speed (Feb 08)
- Current Toll (Feb 08)
- Max Operational Toll
- Historic EL Volume (Feb 01)
- Historic GP Volume (Feb 01)
- Historic EL Speed (Feb 01)
- Historic GP Speed (Feb 01)
- Historic Toll (Feb 01)
- Targeted Min. LOS - 45mph

DATA DATE: Week of 1/22 - 1/26

2. Toll System Performance

Speed Differential - Directional Peak Periods



--- Targeted Min. LOS - 45mph