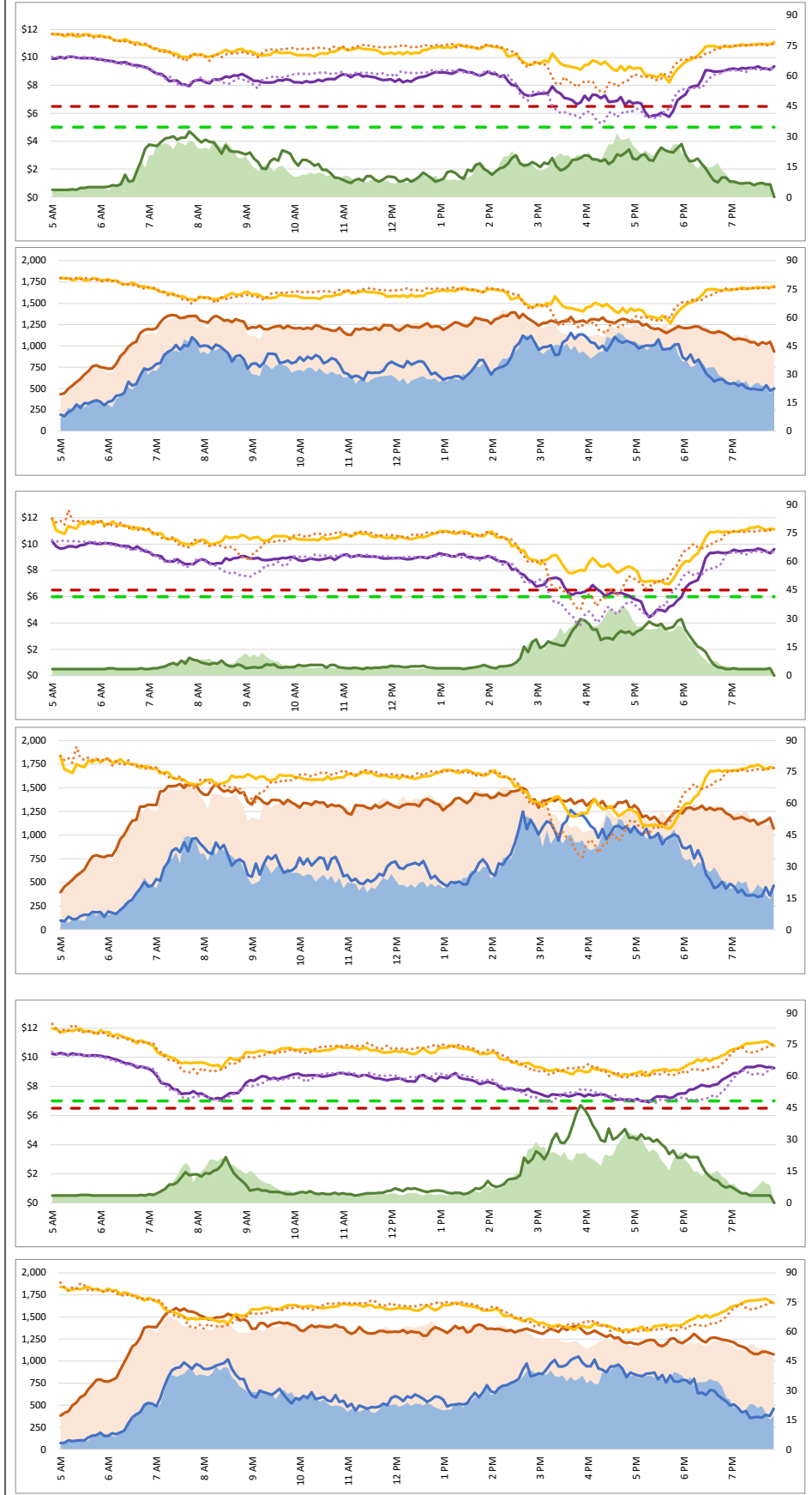


1. Lane Performance

Average Speeds, Volumes & Tolls - Current (Week of 4/21 - 4/25) vs Historic (Week of 4/14 - 4/18)

DATA DATE: Week of 4/21 - 4/25



3740 - Broadway SB

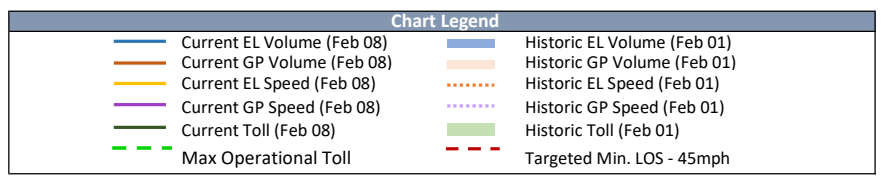
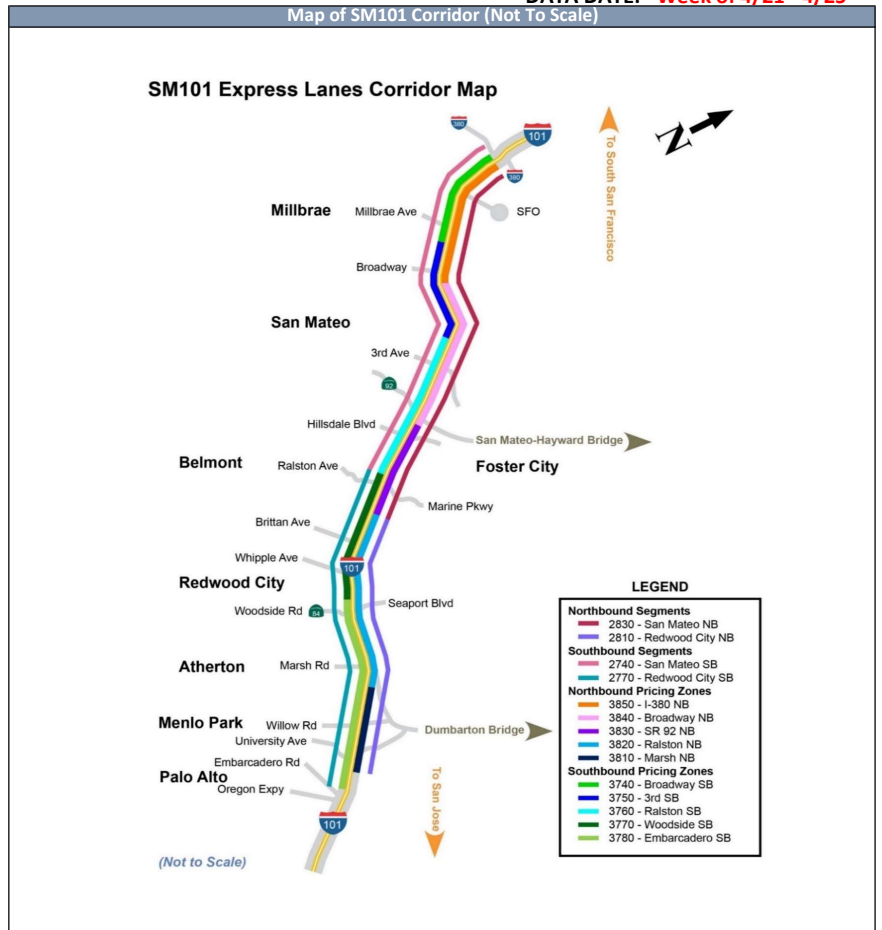
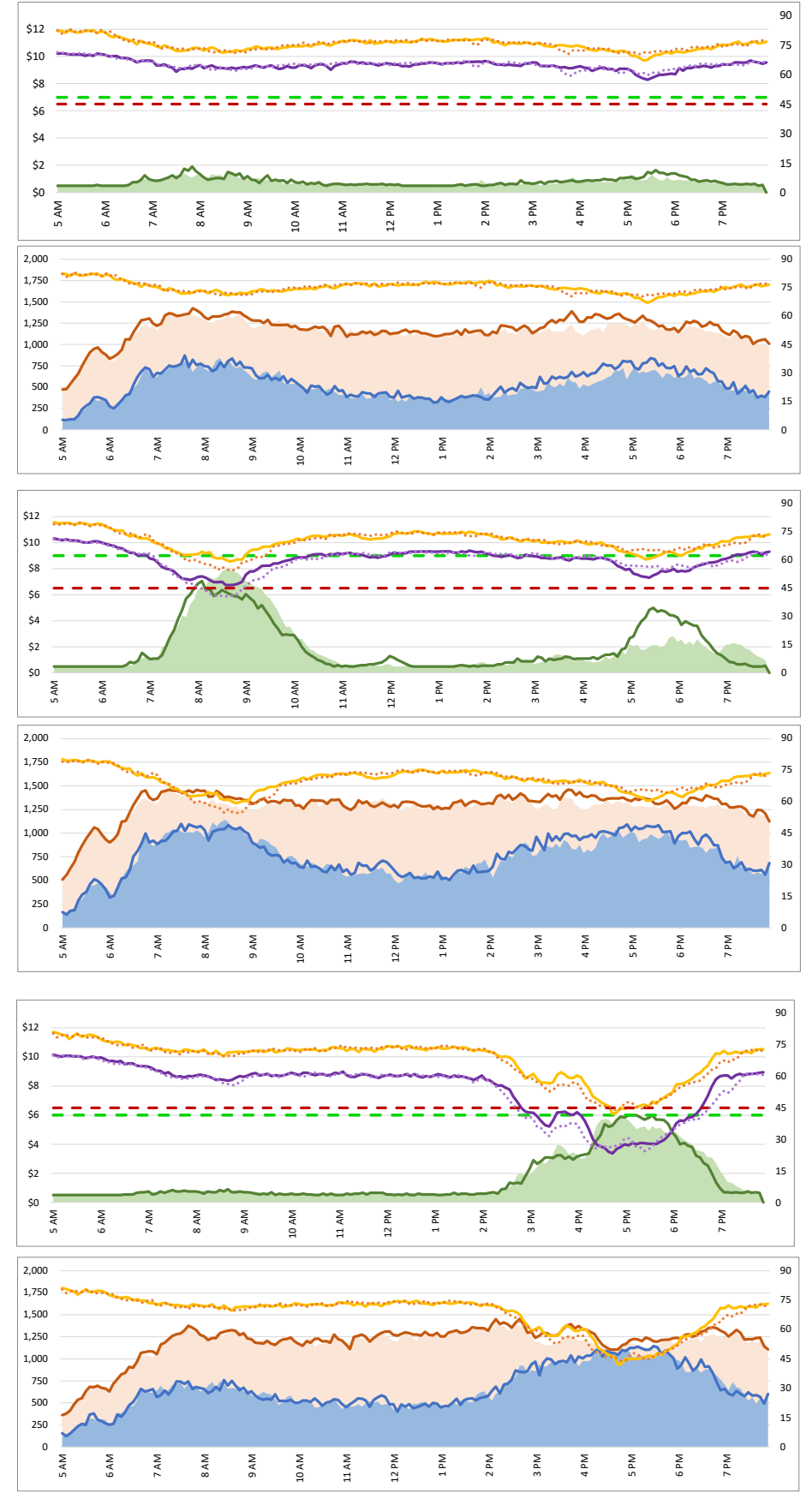
3850 - I-380 NB

3750 - 3rd SB

3840 - Broadway NB

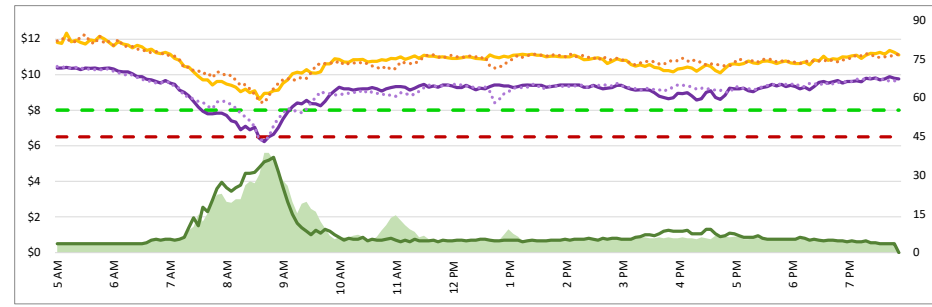
3760 - Ralston SB

3830 - SR 92 NB



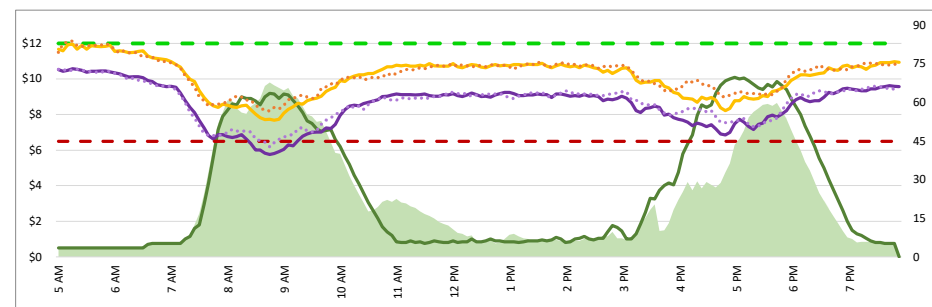
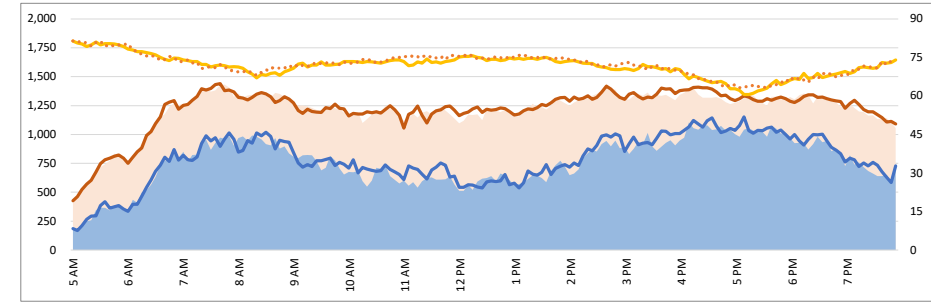
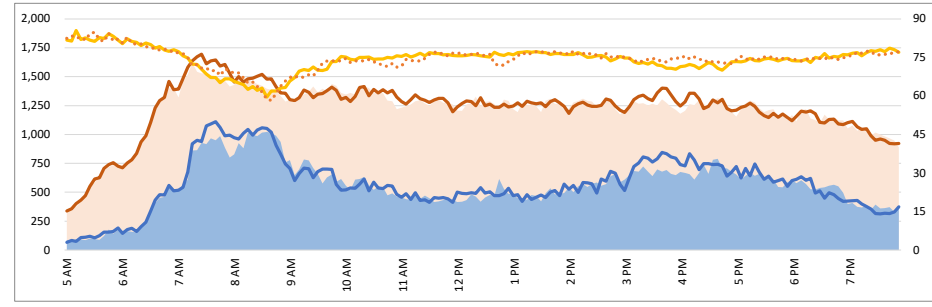
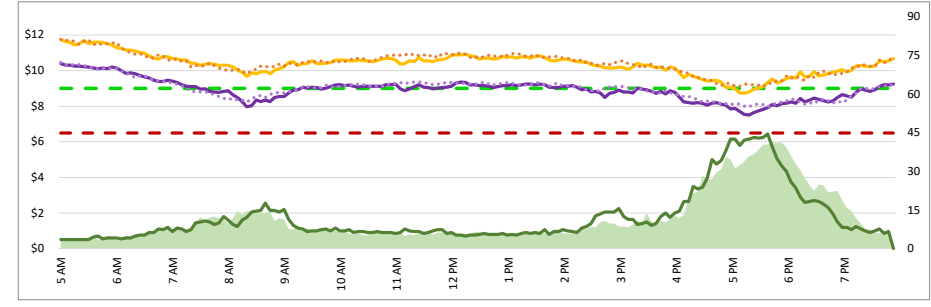
1. Lane Performance

Average Speeds, Volumes & Tolls - Current (Week of 4/21 - 4/25) vs Historic (Week of 4/14 - 4/18)



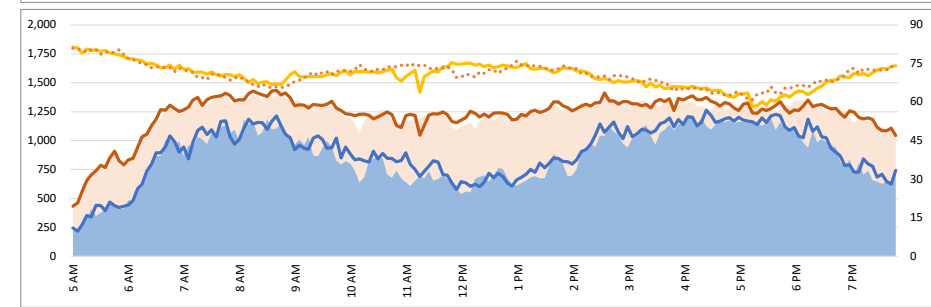
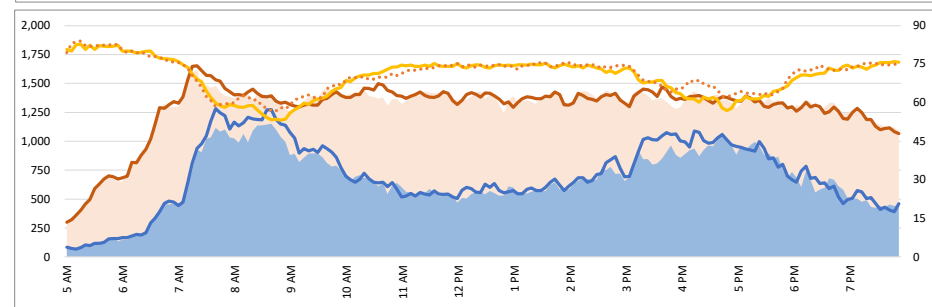
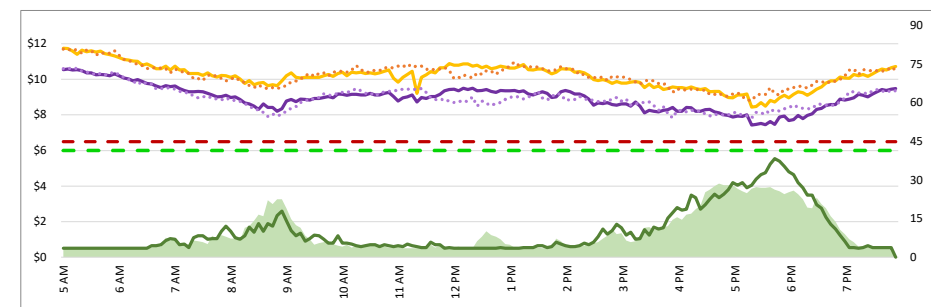
3770 - Woodside SB

3820 - Ralston NB



3780 - Embarcadero SB

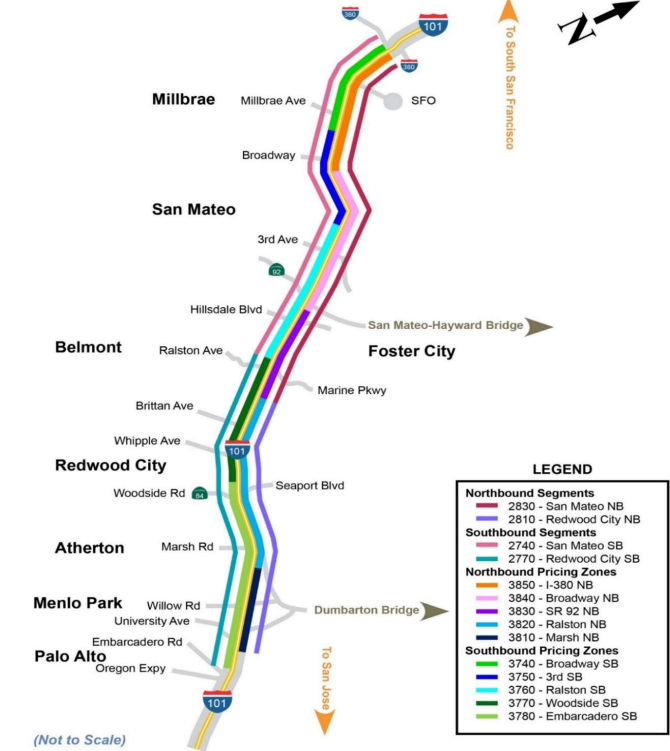
3810 - Marsh NB



DATA DATE: Week of 4/21 - 4/25

Map of SM101 Corridor (Not To Scale)

SM101 Express Lanes Corridor Map



(Not to Scale)

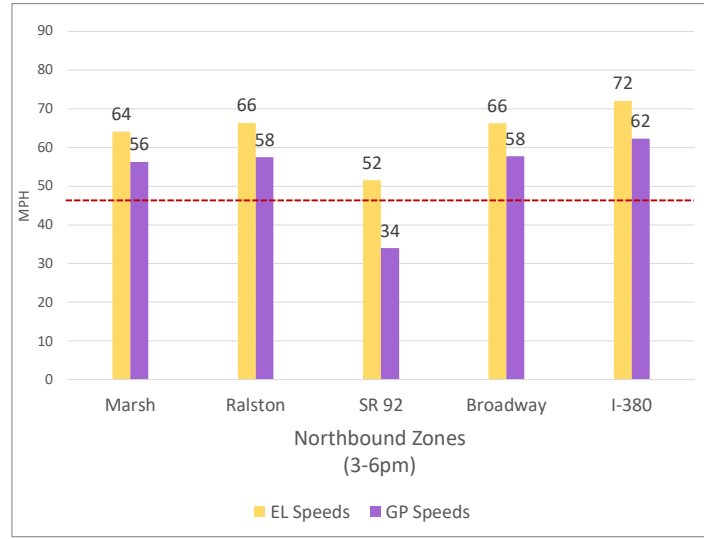
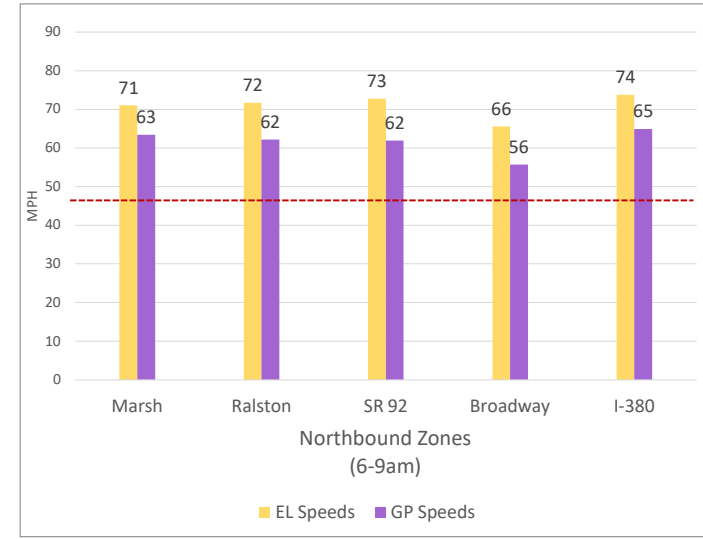
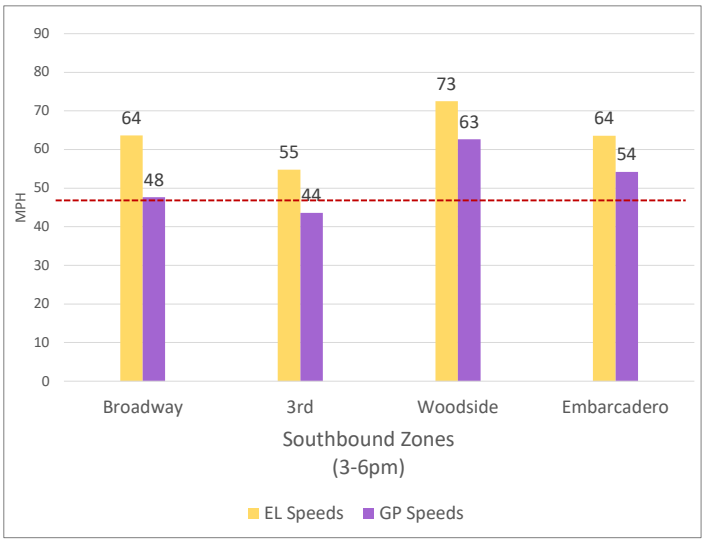
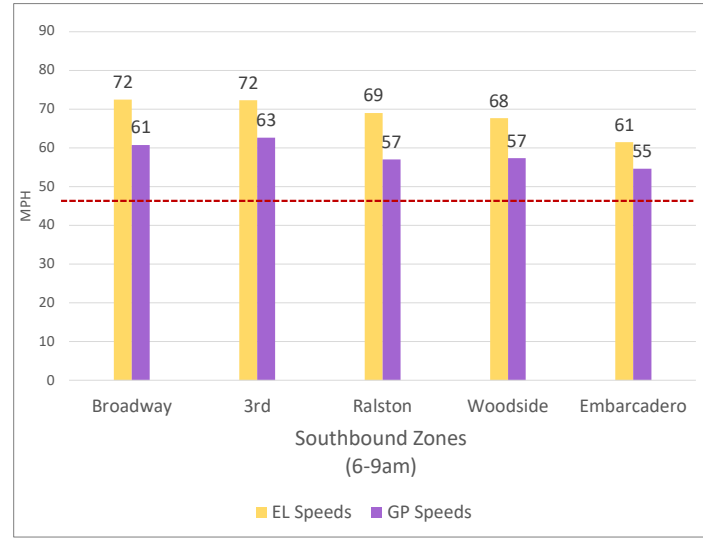
Chart Legend

- Current EL Volume (Feb 08)
- Current GP Volume (Feb 08)
- Current EL Speed (Feb 08)
- Current GP Speed (Feb 08)
- Current Toll (Feb 08)
- - - Max Operational Toll
- Historic EL Volume (Feb 01)
- Historic GP Volume (Feb 01)
- - - Historic EL Speed (Feb 01)
- - - Historic GP Speed (Feb 01)
- Historic Toll (Feb 01)
- - - Targeted Min. LOS - 45mph

DATA DATE: Week of 4/21 - 4/25

2. Toll System Performance

Speed Differential - Directional Peak Periods



-- Targeted Min. LOS - 45mph