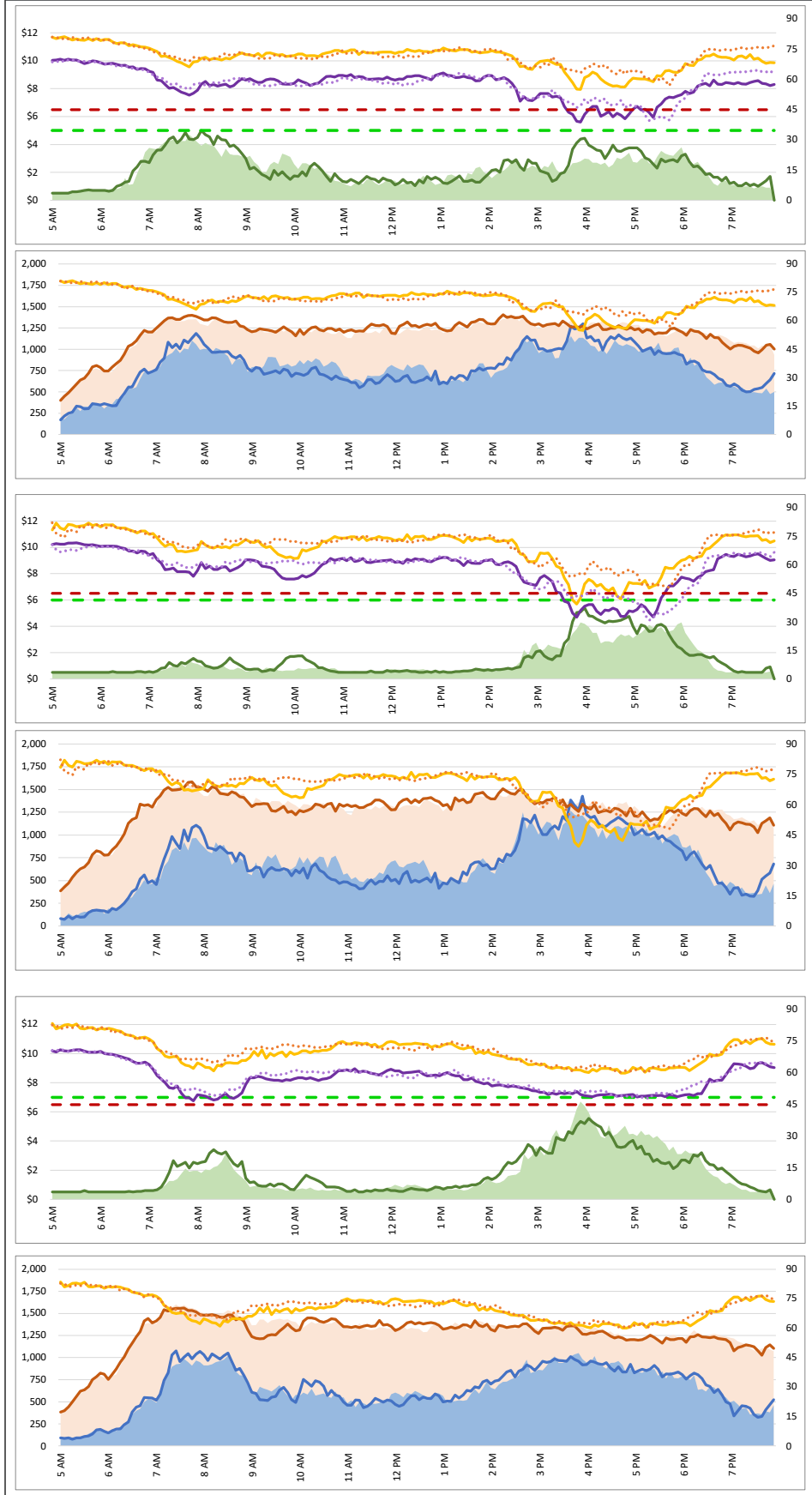
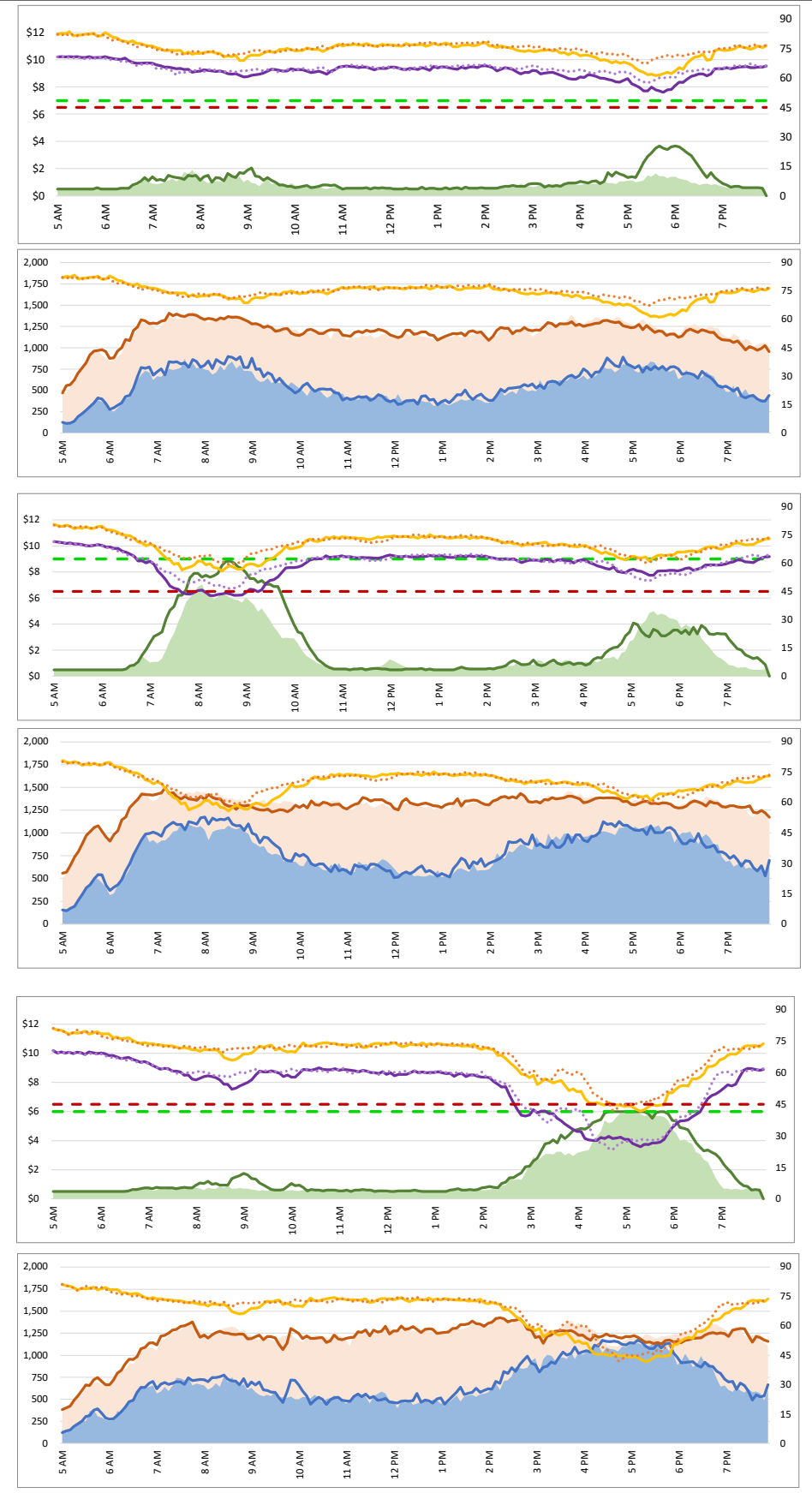


1. Lane Performance

Average Speeds, Volumes & Tolls - Current (Week of 4/28 - 5/2) vs Historic (Week of 4/21 - 4/25)

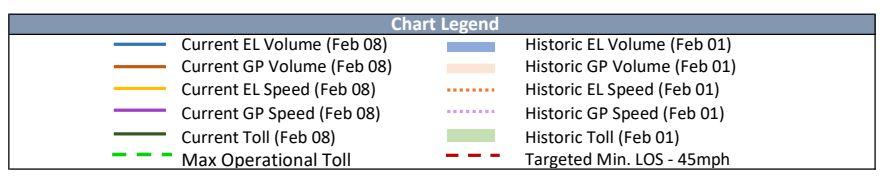
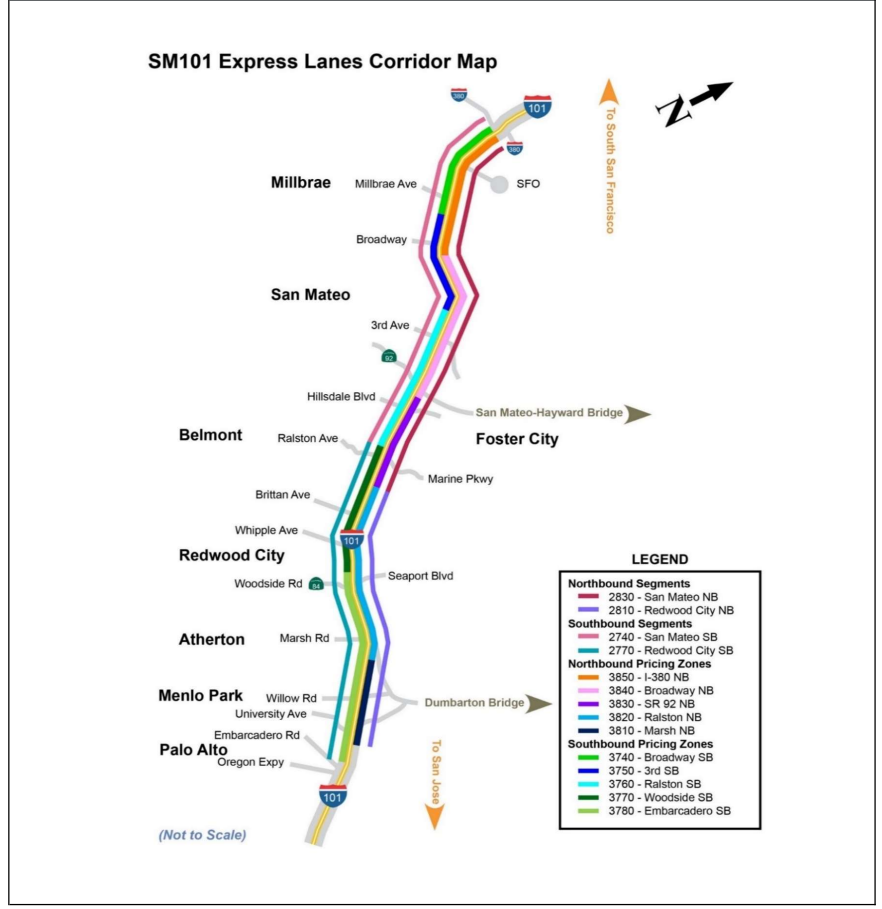


3740 - Broadway SB  
3750 - 3rd SB  
3760 - Ralston SB  
3770 - Woodside SB



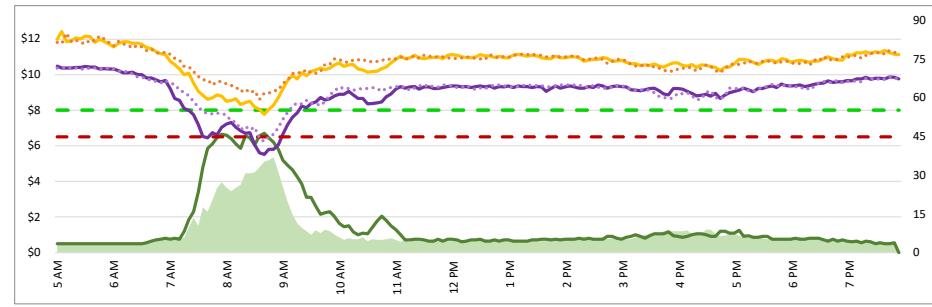
3850 - I-380 NB  
3840 - Broadway NB  
3830 - SR 92 NB  
3820 - Ralston NB

Map of SM101 Corridor (Not To Scale) DATA DATE: Week of 4/28 - 5/2



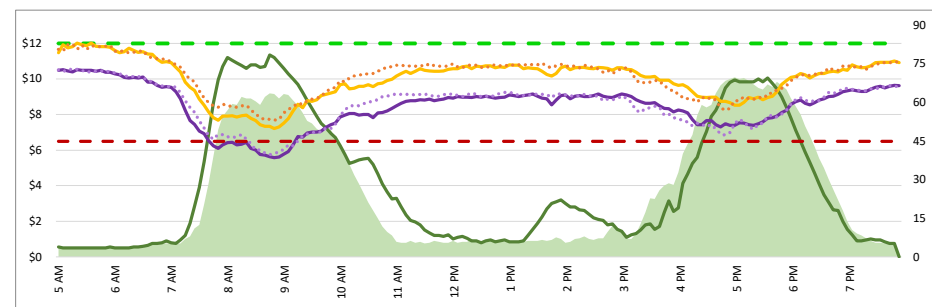
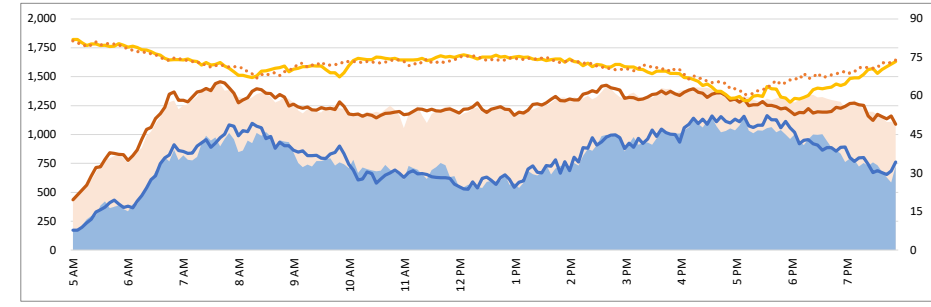
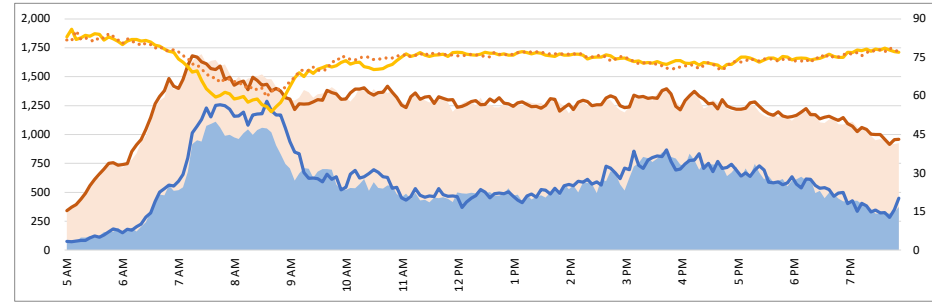
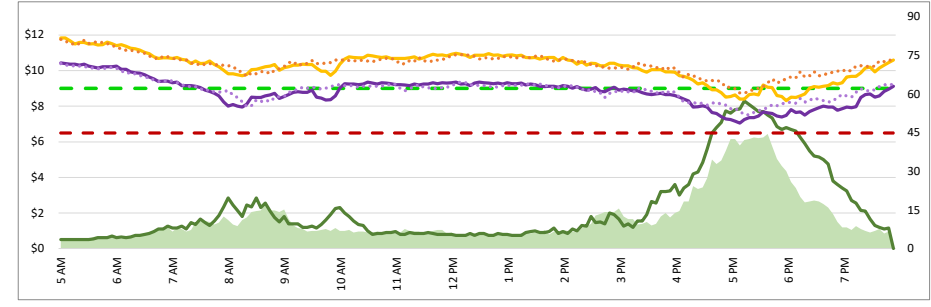
1. Lane Performance

Average Speeds, Volumes & Tolls - Current (Week of 4/28 - 5/2) vs Historic (Week of 4/21 - 4/25)



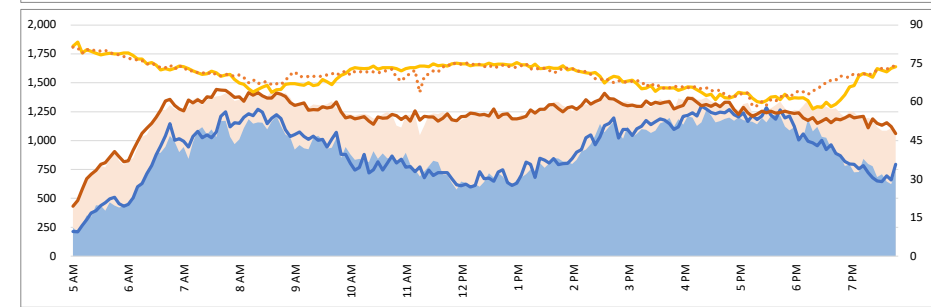
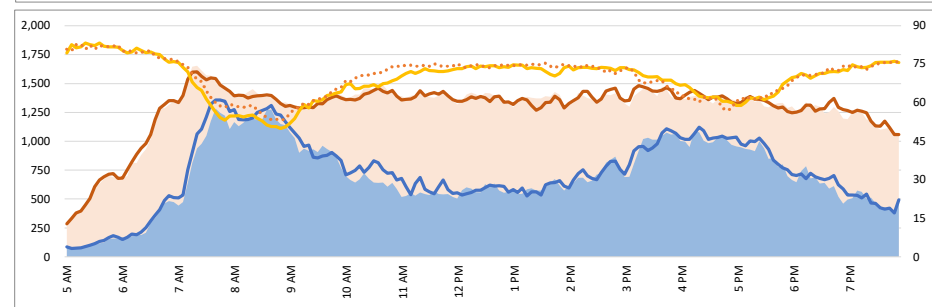
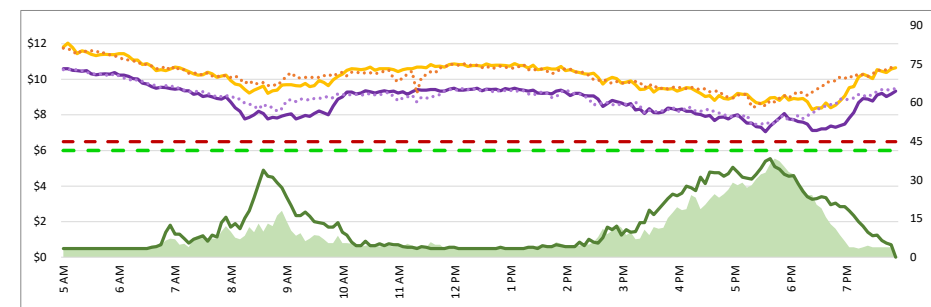
3770 - Woodside SB

3820 - Ralston NB



3780 - Embarcadero SB

3810 - Marsh NB



DATA DATE: Week of 4/28 - 5/2

Map of SM101 Corridor (Not To Scale)

SM101 Express Lanes Corridor Map

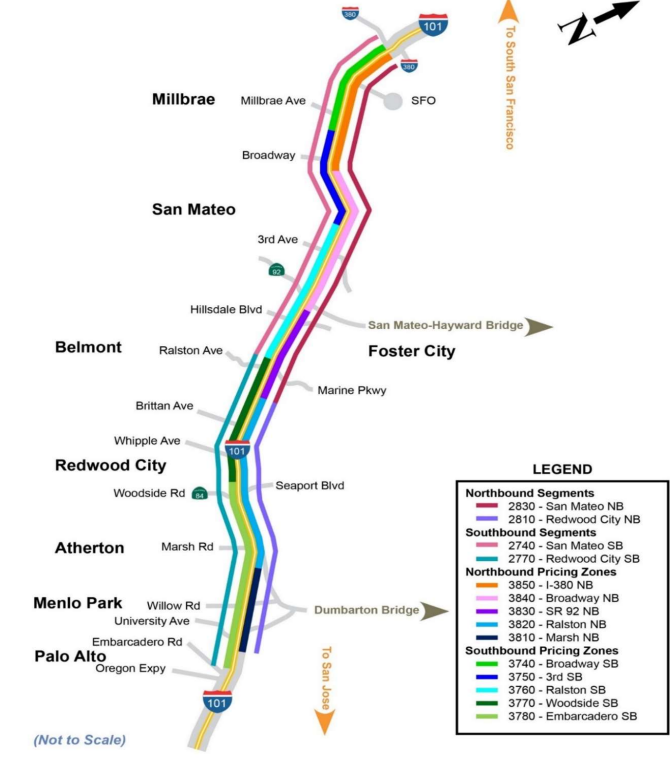


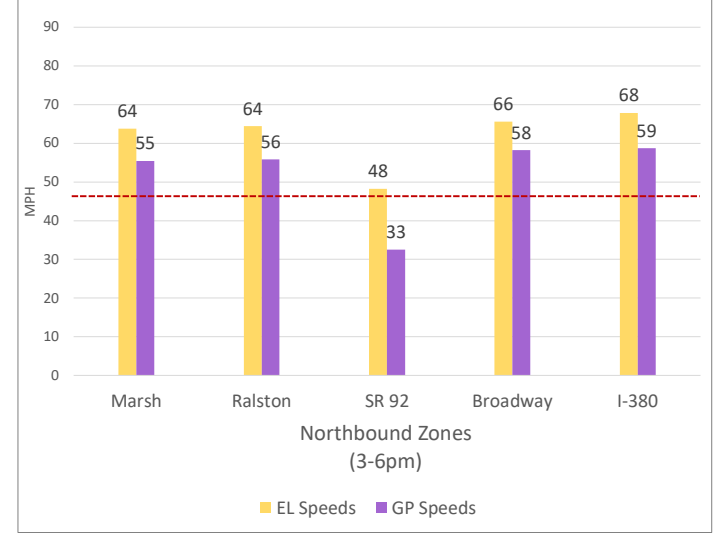
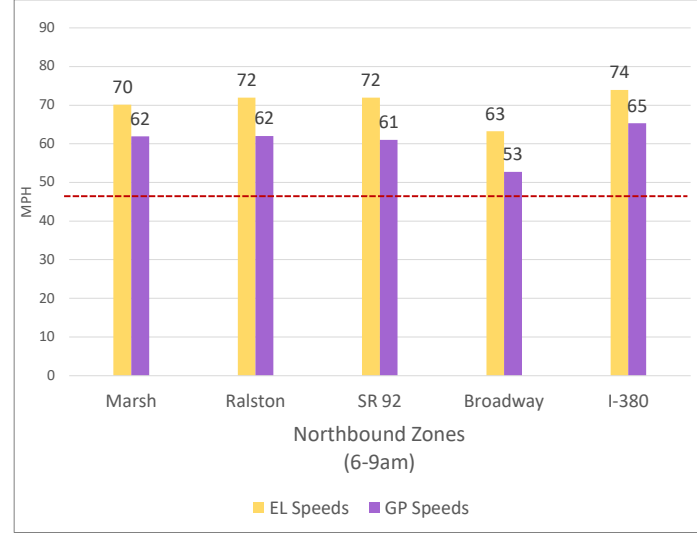
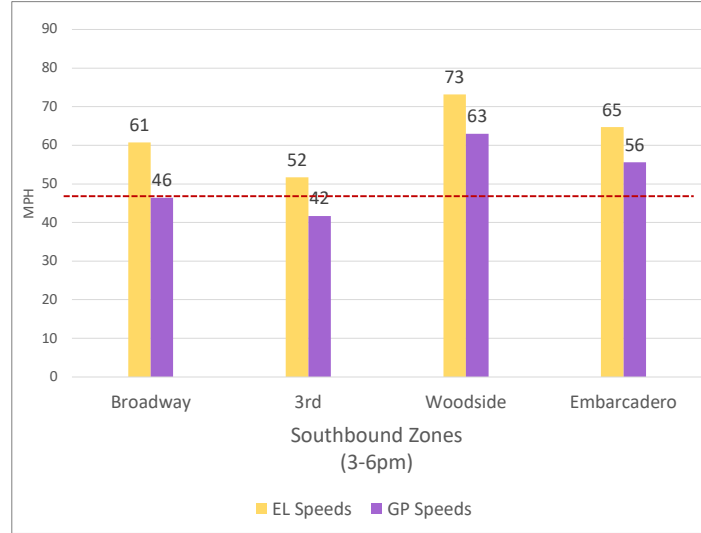
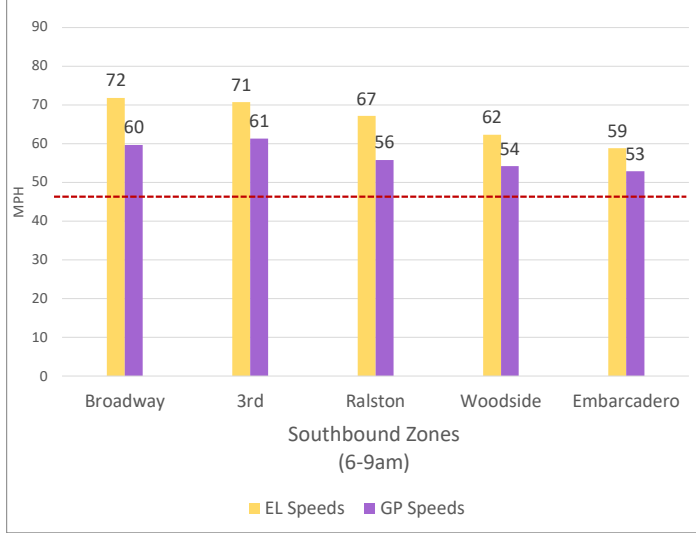
Chart Legend

— Current EL Volume (Feb 08)	— Historic EL Volume (Feb 01)
— Current GP Volume (Feb 08)	— Historic GP Volume (Feb 01)
— Current EL Speed (Feb 08)	— Historic EL Speed (Feb 01)
— Current GP Speed (Feb 08)	— Historic GP Speed (Feb 01)
— Current Toll (Feb 08)	— Historic Toll (Feb 01)
— Max Operational Toll	— Targeted Min. LOS - 45mph

DATA DATE: **Week of 4/28 - 5/2**

2. Toll System Performance

Speed Differential - Directional Peak Periods



- - Targeted Min. LOS - 45mph