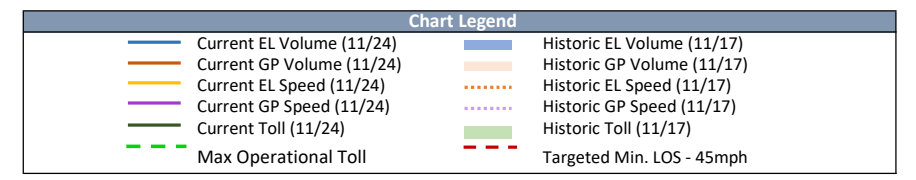
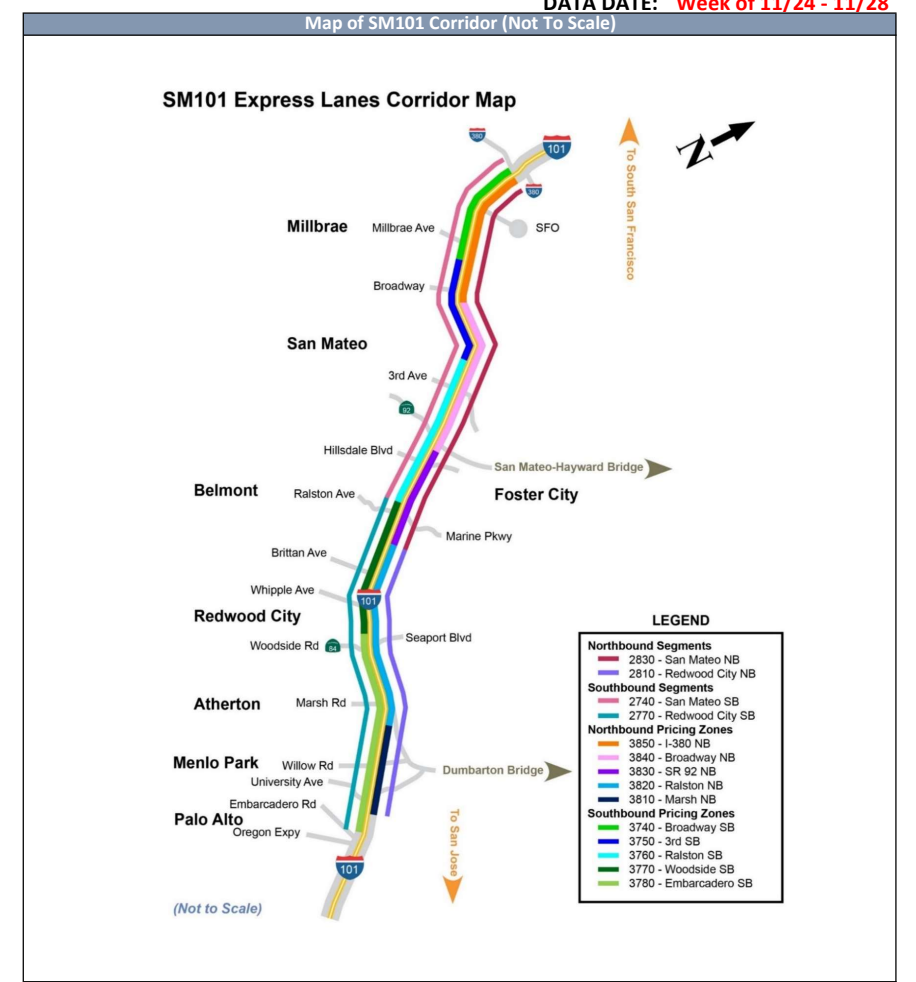
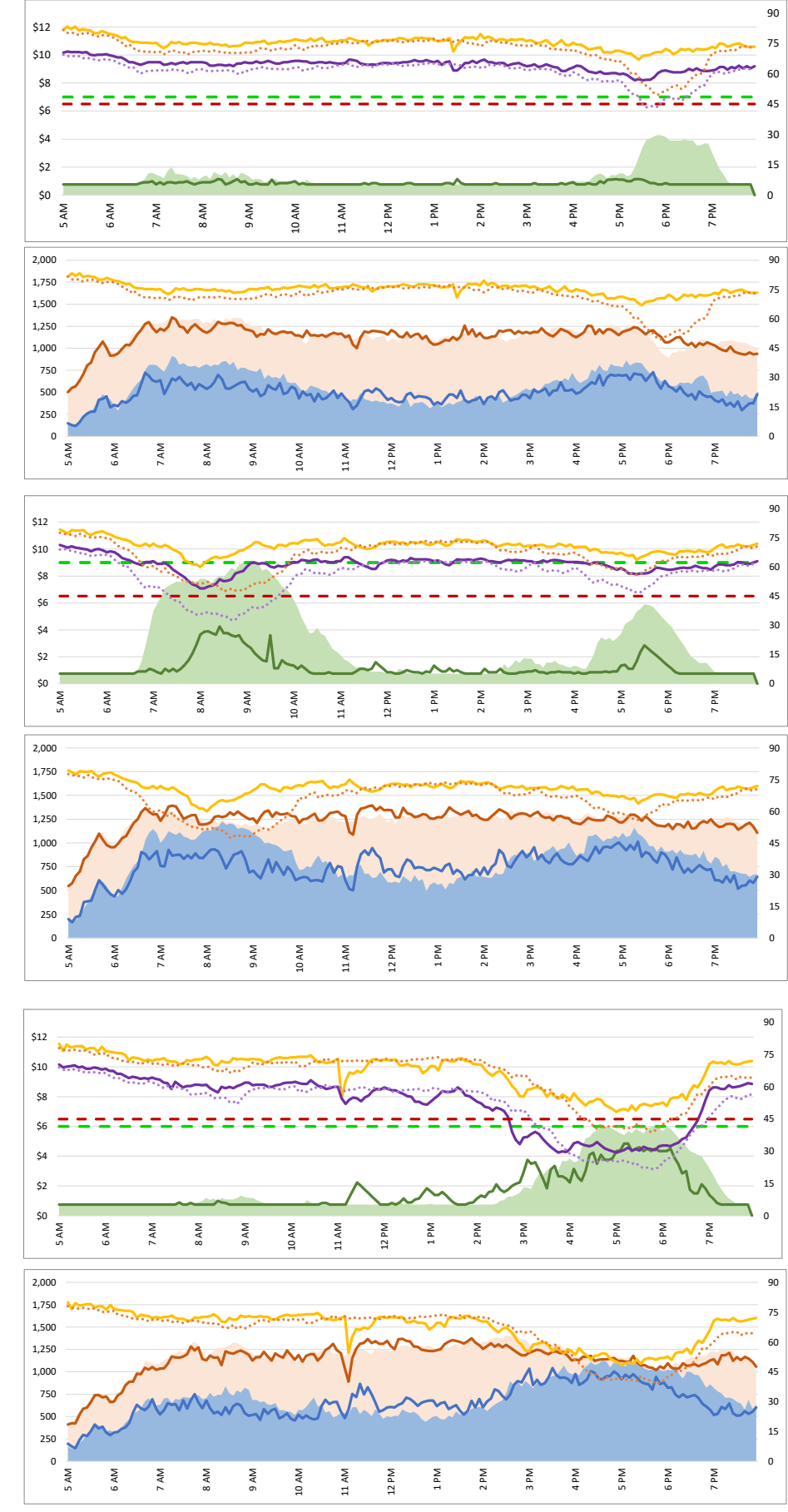
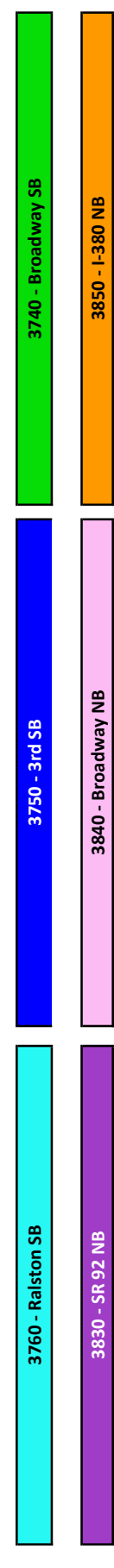
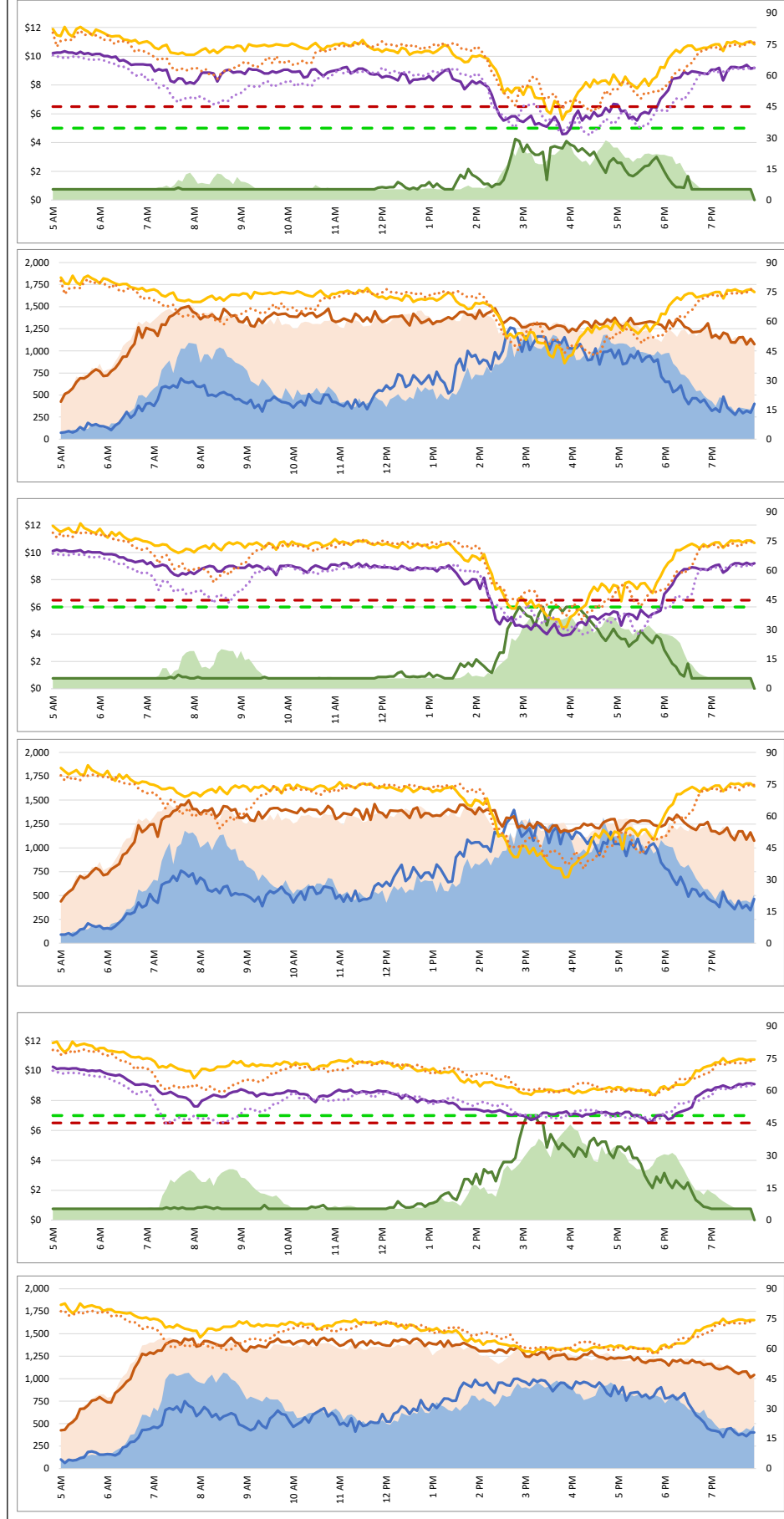


1. Lane Performance

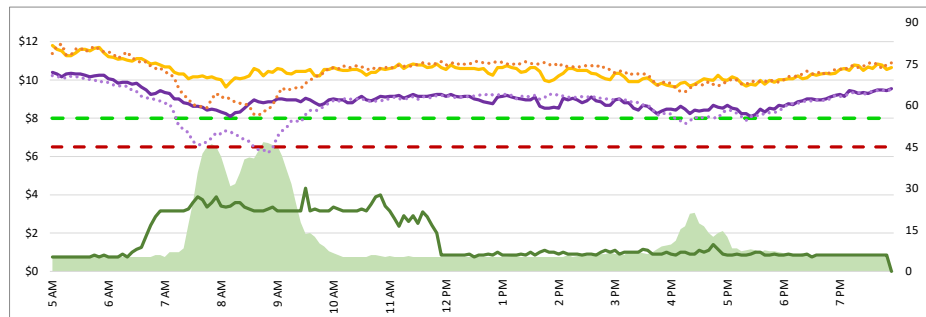
Average Speeds, Volumes & Tolls - Current (Week of 11/24 - 11/28) vs Historic (Week of 11/17 - 11/21)

DATA DATE: **Week of 11/24 - 11/28**



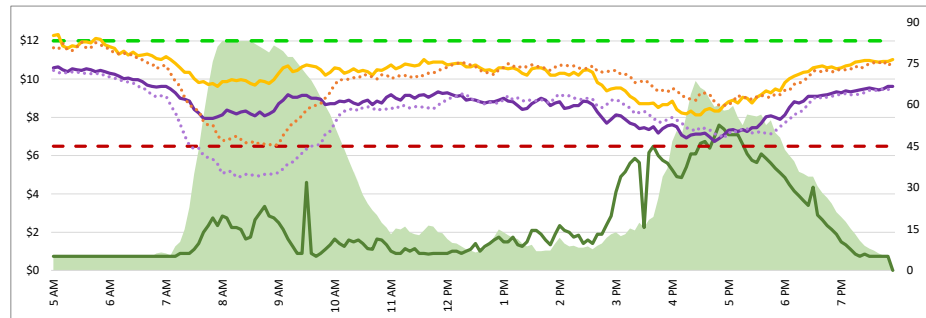
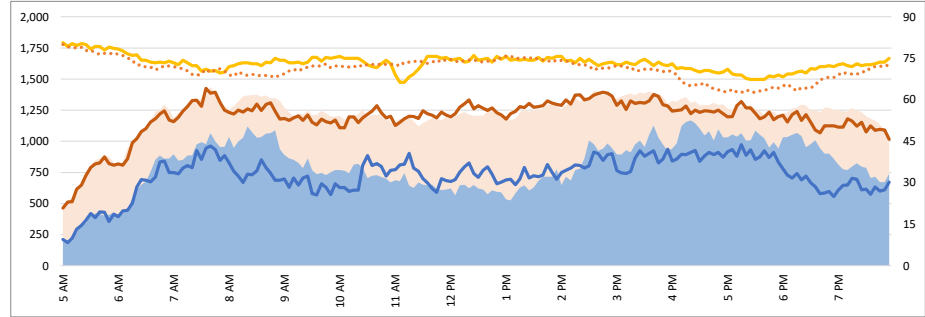
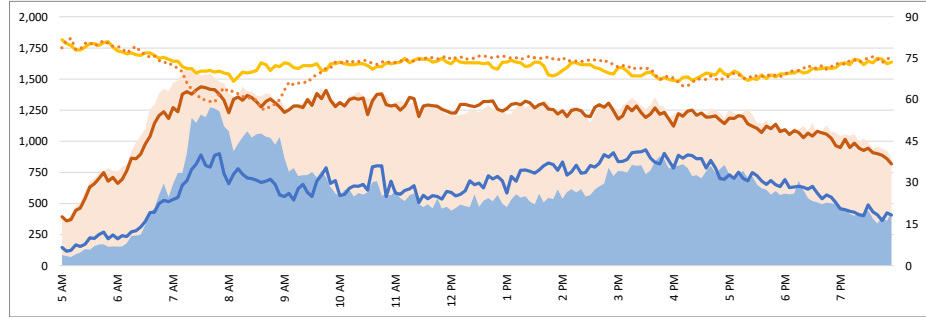
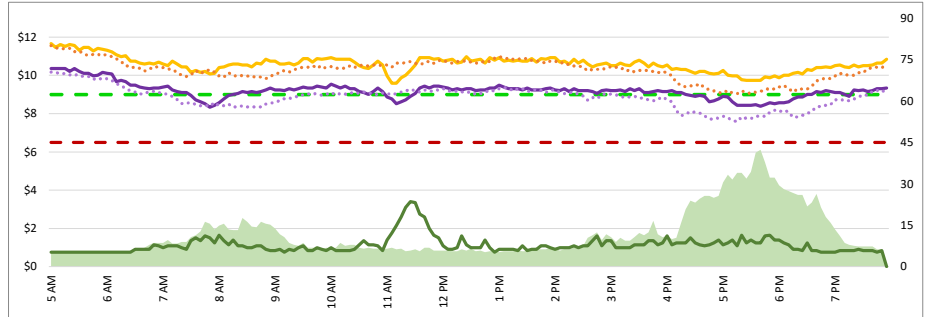
1. Lane Performance

Average Speeds, Volumes & Tolls - Current (Week of 11/24 - 11/28) vs Historic (Week of 11/17 - 11/21)



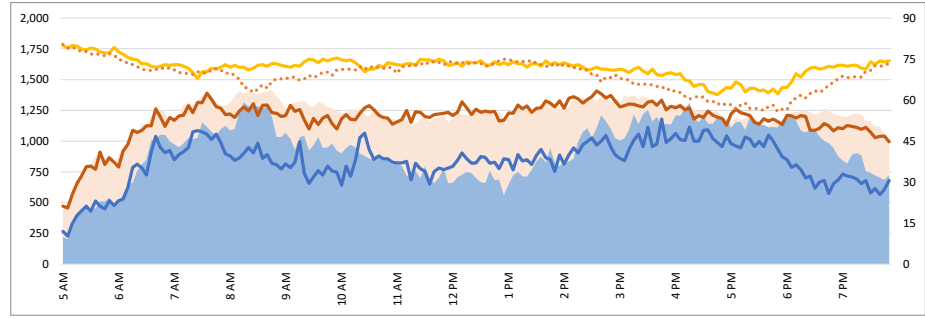
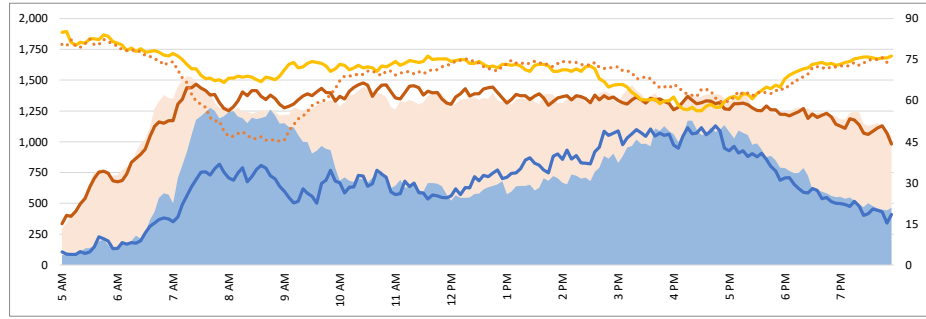
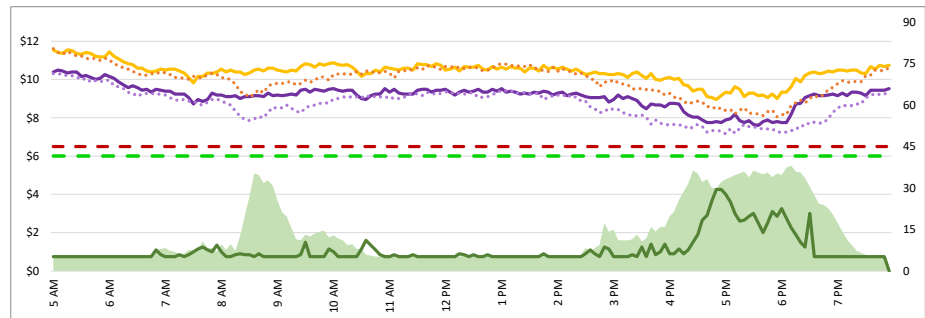
3770 - Woodside SB

3820 - Ralston NB



3780 - Embarcadero SB

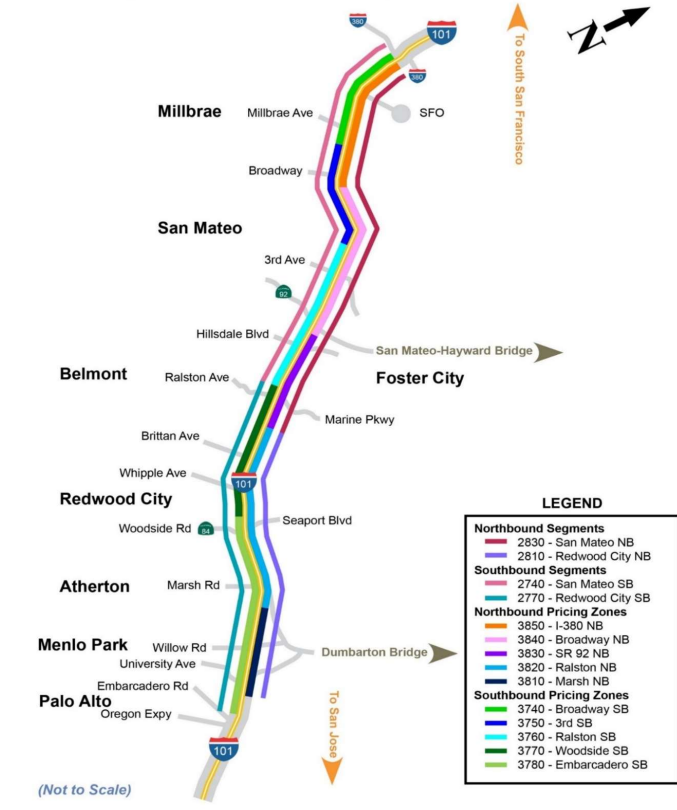
3810 - Marsh NB



DATA DATE: Week of 11/24 - 11/28

Map of SM101 Corridor (Not To Scale)

SM101 Express Lanes Corridor Map



LEGEND

- Northbound Segments**
 - 2830 - San Mateo NB
 - 2810 - Redwood City NB
- Southbound Segments**
 - 2740 - San Mateo SB
 - 2770 - Redwood City SB
- Northbound Pricing Zones**
 - 3850 - I-380 NB
 - 3840 - Broadway NB
 - 3830 - SR 92 NB
 - 3820 - Ralston NB
 - 3810 - Marsh NB
- Southbound Pricing Zones**
 - 3740 - Broadway SB
 - 3750 - 3rd SB
 - 3780 - Ralston SB
 - 3770 - Woodside SB
 - 3780 - Embarcadero SB

(Not to Scale)

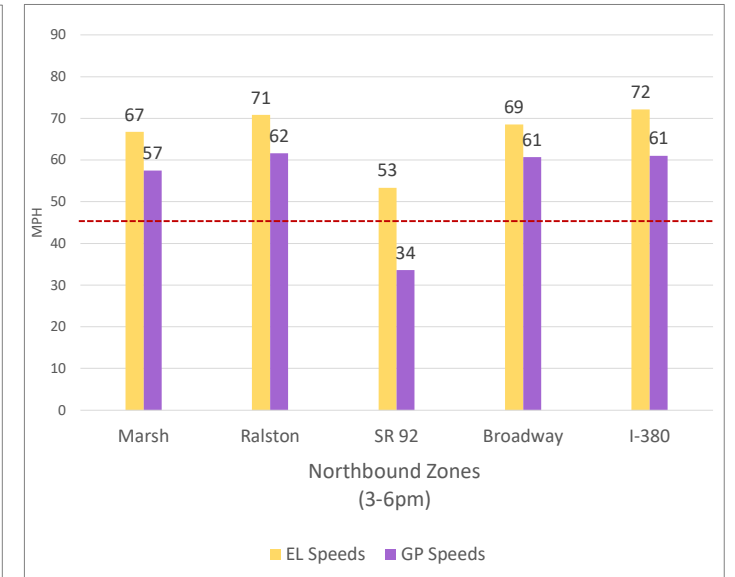
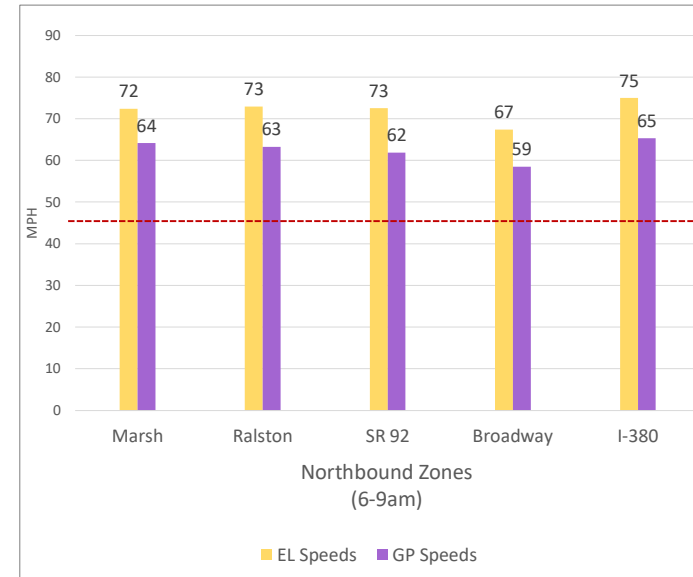
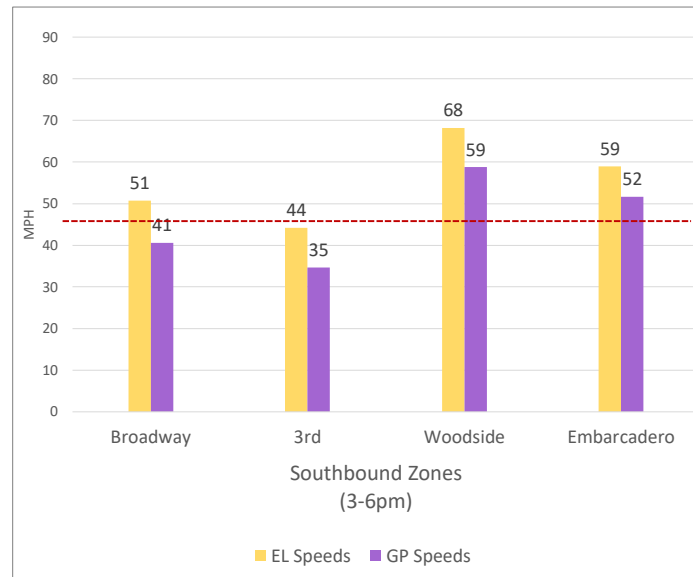
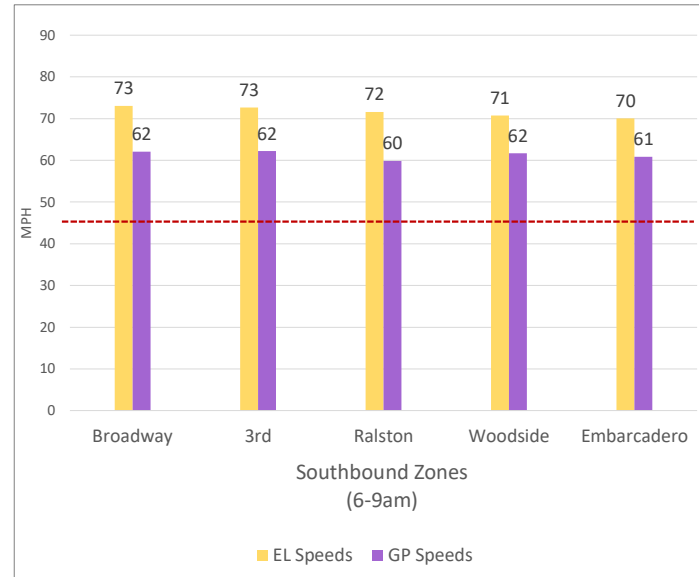
Chart Legend

- Current EL Volume (11/24)
- Current GP Volume (11/24)
- Current EL Speed (11/24)
- Current GP Speed (11/24)
- Current Toll (11/24)
- Max Operational Toll
- Historic EL Volume (11/17)
- Historic GP Volume (11/17)
- Historic EL Speed (11/17)
- Historic GP Speed (11/17)
- Historic Toll (11/17)
- Targeted Min. LOS - 45mph

2. Toll System Performance

DATA DATE: **Week of 11/24 - 11/28**

Speed Differential - Directional Peak Periods



--- Targeted Min. LOS - 45mph