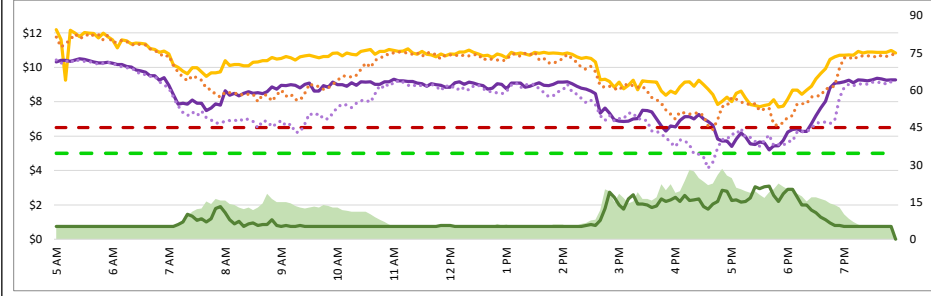


1. Lane Performance

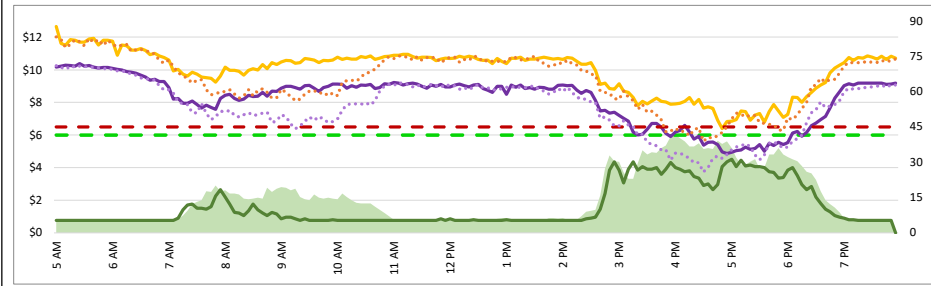
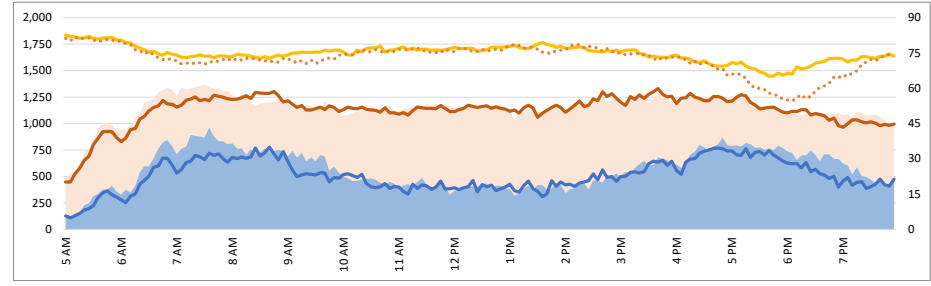
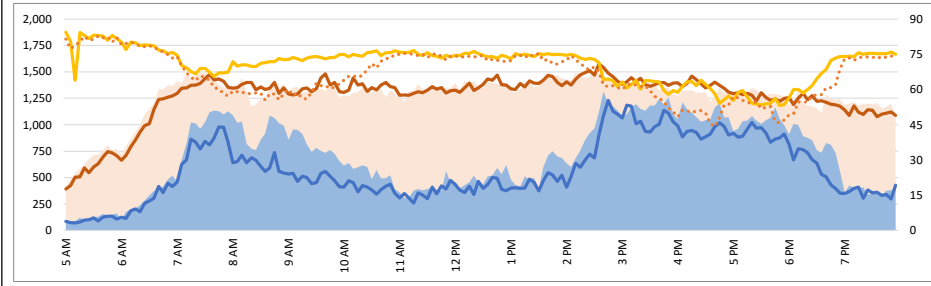
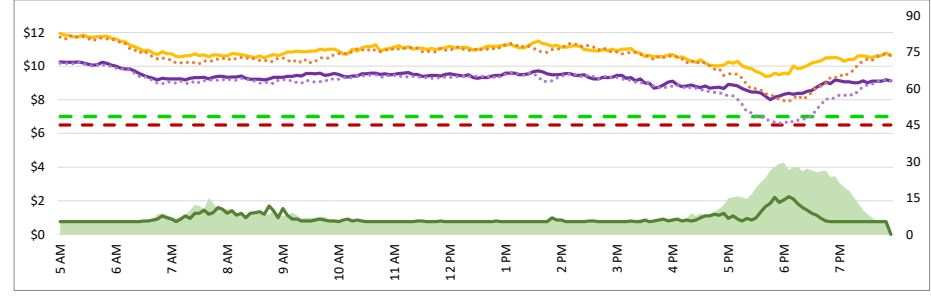
Average Speeds, Volumes & Tolls - Current (Week of 1/19 - 1/23) vs Historic (Week of 1/12 - 1/16)

DATA DATE: Week of 1/19 - 1/23



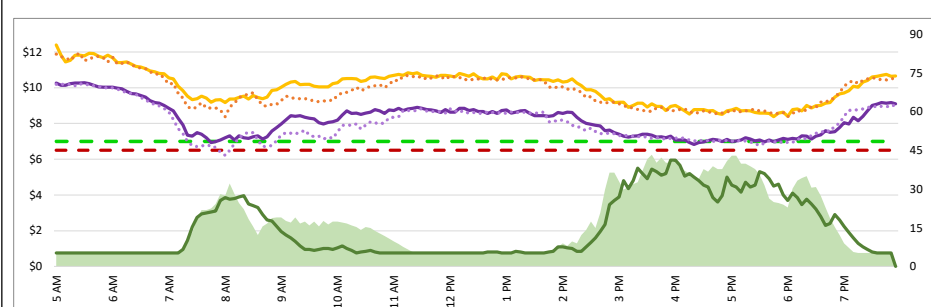
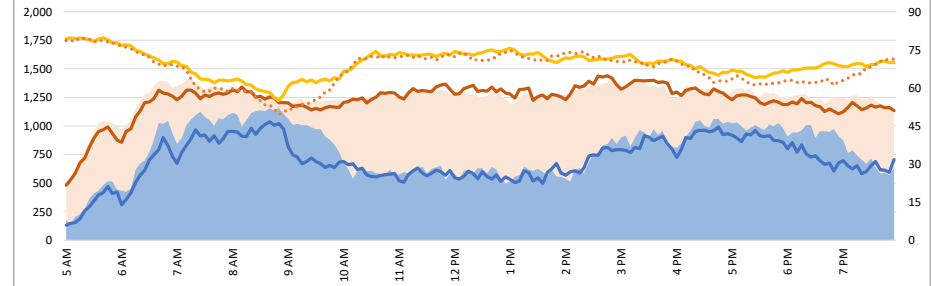
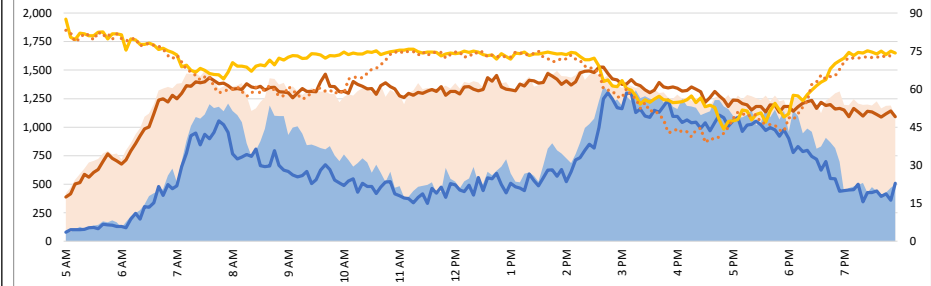
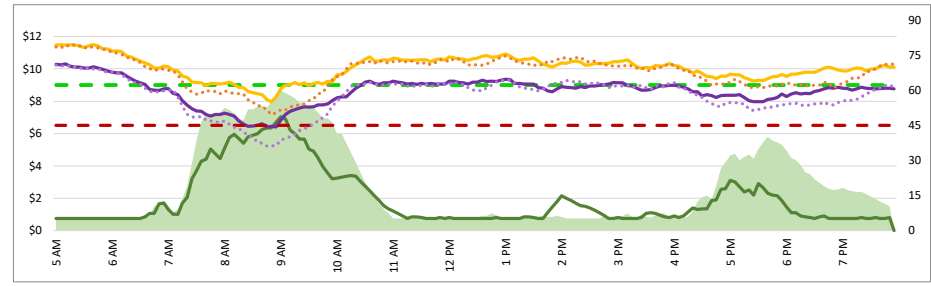
3740 - Broadway SB

3850 - I-380 NB



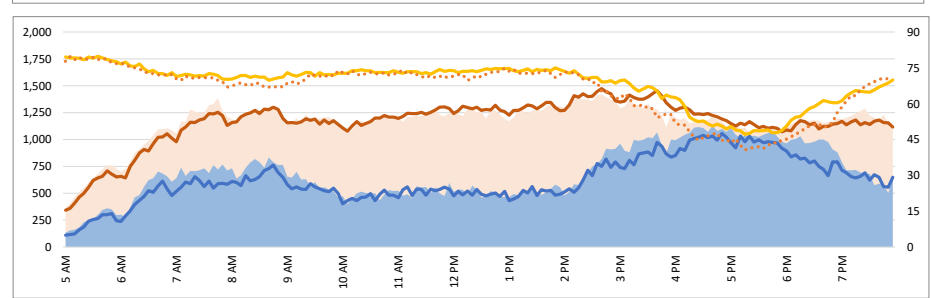
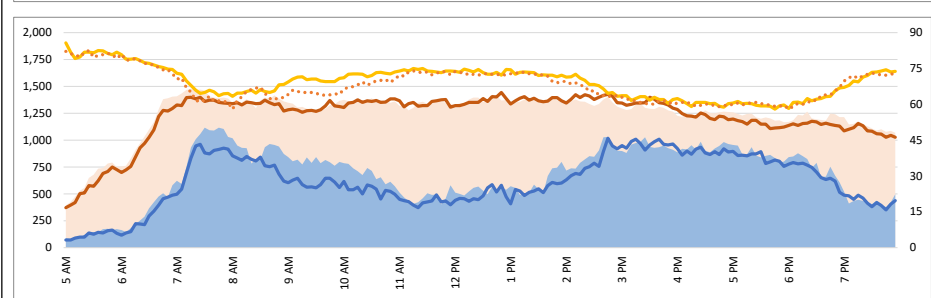
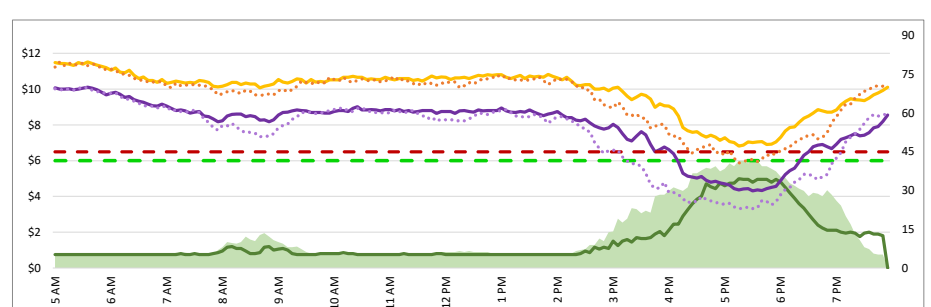
3750 - 3rd SB

3840 - Broadway NB



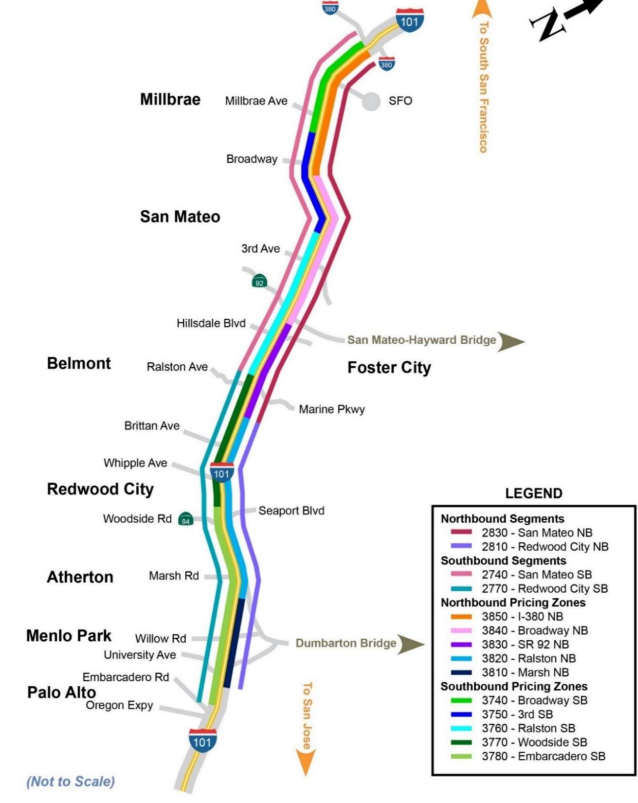
3760 - Ralston SB

3830 - SR 92 NB



Map of SM101 Corridor (Not To Scale)

SM101 Express Lanes Corridor Map

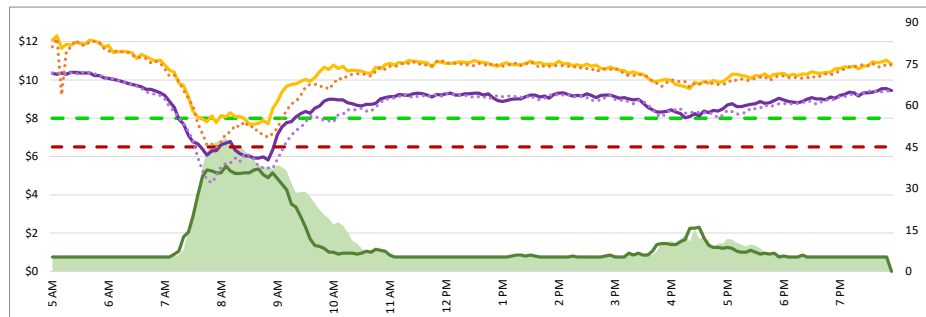


- LEGEND**
- Northbound Segments**
    - 2830 - San Mateo NB
    - 2810 - Redwood City NB
  - Southbound Segments**
    - 2740 - San Mateo SB
    - 2770 - Redwood City SB
  - Northbound Pricing Zones**
    - 3850 - I-380 NB
    - 3840 - Broadway NB
    - 3830 - SR 92 NB
    - 3820 - Ralston NB
    - 3810 - Marsh NB
  - Southbound Pricing Zones**
    - 3740 - Broadway SB
    - 3750 - 3rd SB
    - 3760 - Ralston SB
    - 3770 - Woodside SB
    - 3780 - Embarcadero SB

- Chart Legend**
- Current EL Volume (01/19)
  - Current GP Volume (01/19)
  - Current EL Speed (01/19)
  - Current GP Speed (01/19)
  - Current Toll (01/19)
  - Max Operational Toll
  - Historic EL Volume (01/12)
  - Historic GP Volume (01/12)
  - Historic EL Speed (01/12)
  - Historic GP Speed (01/12)
  - Historic Toll (01/12)
  - Targeted Min. LOS - 45mph

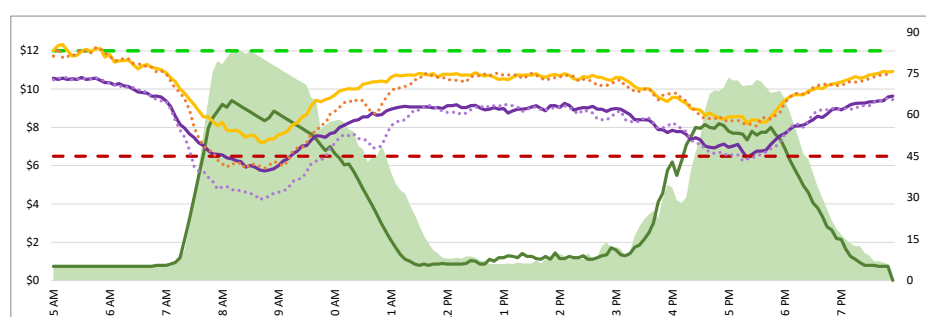
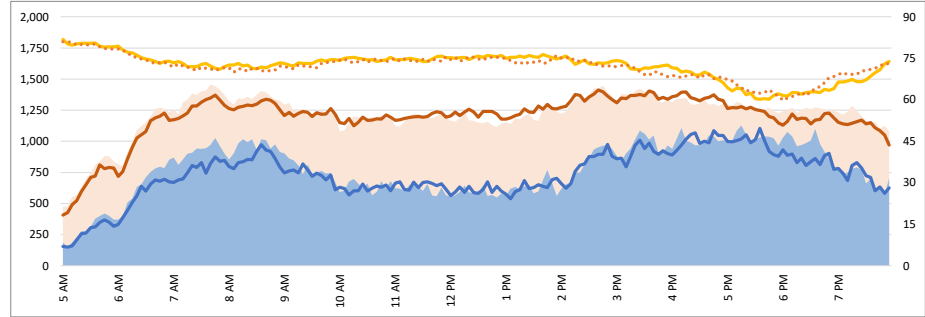
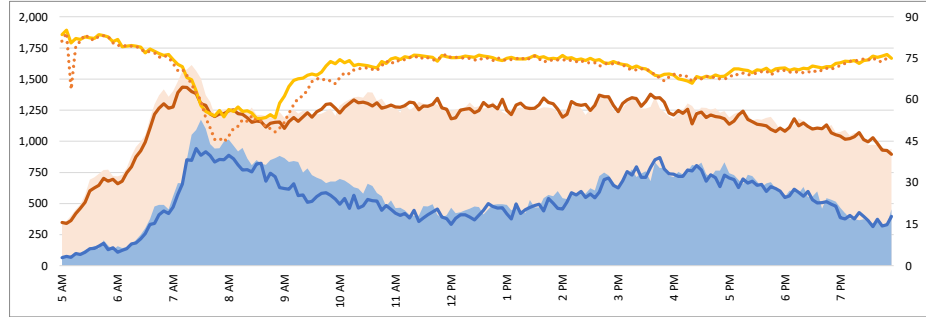
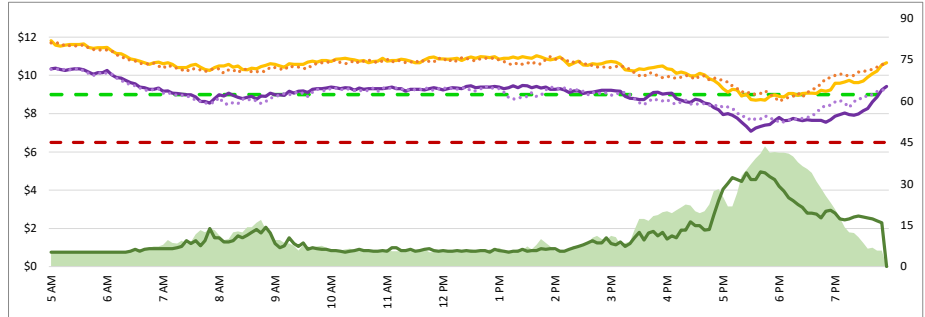
1. Lane Performance

Average Speeds, Volumes & Tolls - Current (Week of 1/19 - 1/23) vs Historic (Week of 1/12 - 1/16)



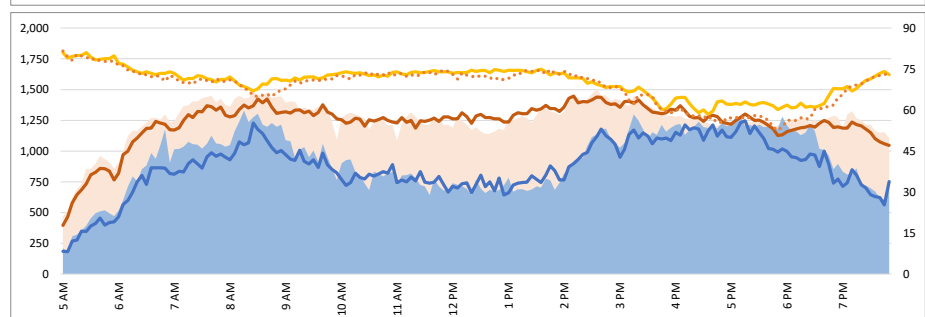
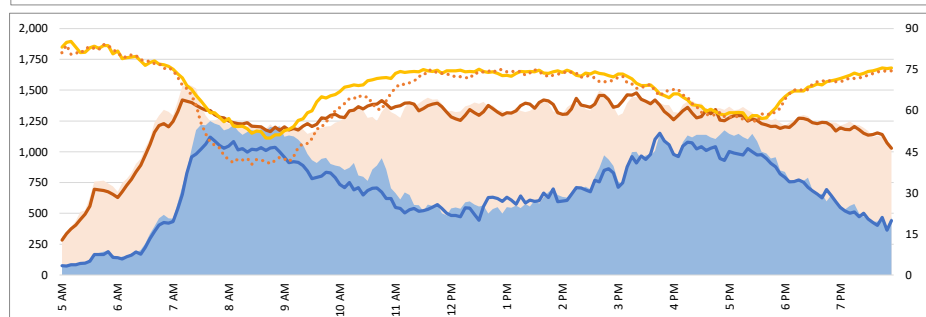
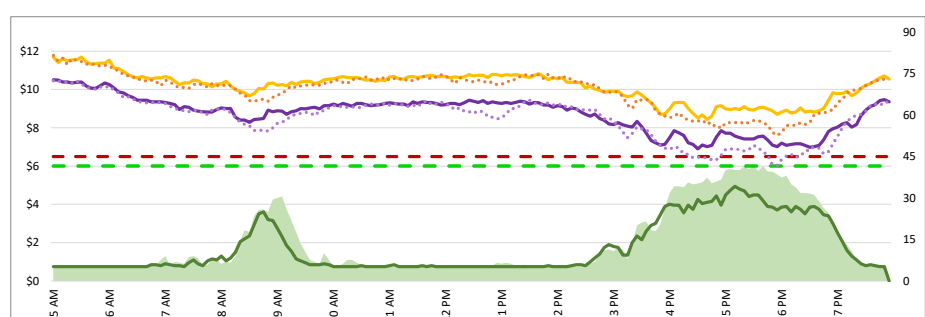
3770 - Woodside SB

3820 - Ralston NB



3780 - Embarcadero SB

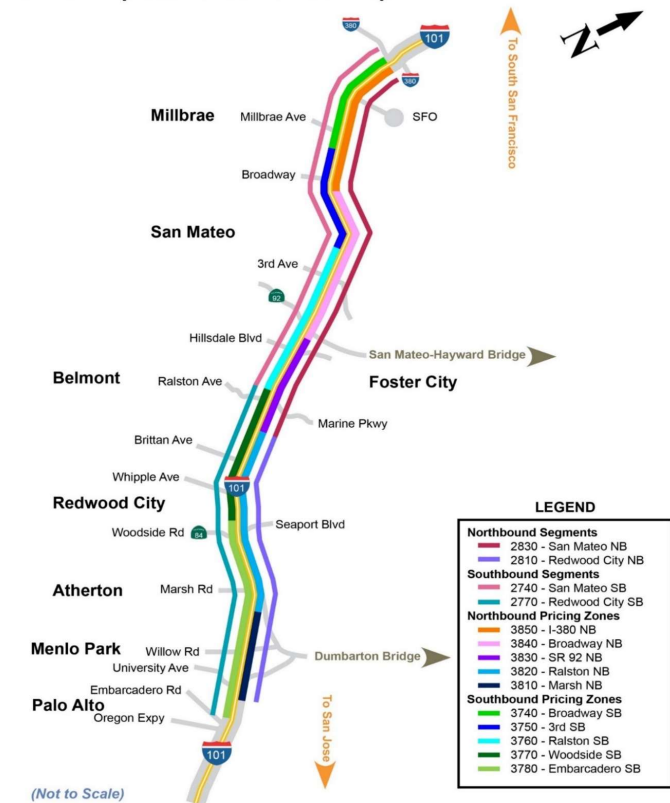
3810 - Marsh NB



DATA DATE: Week of 1/19 - 1/23

Map of SM101 Corridor (Not To Scale)

SM101 Express Lanes Corridor Map



**LEGEND**

- Northbound Segments**
  - 2830 - San Mateo NB
  - 2810 - Redwood City NB
- Southbound Segments**
  - 2740 - San Mateo SB
  - 2770 - Redwood City SB
- Northbound Pricing Zones**
  - 3850 - I-380 NB
  - 3640 - Broadway NB
  - 3830 - SR 92 NB
  - 3820 - Ralston NB
  - 3810 - Marsh NB
- Southbound Pricing Zones**
  - 3740 - Broadway SB
  - 3750 - 3rd SB
  - 3780 - Ralston SB
  - 3770 - Woodside SB
  - 3780 - Embarcadero SB

(Not to Scale)

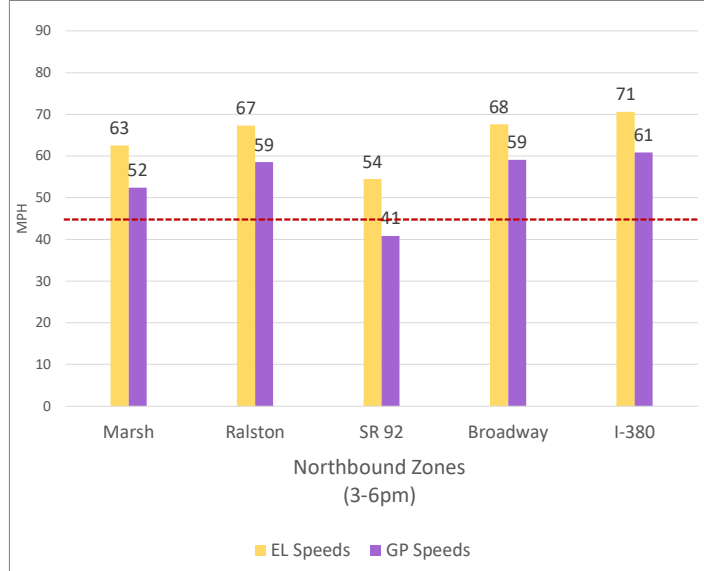
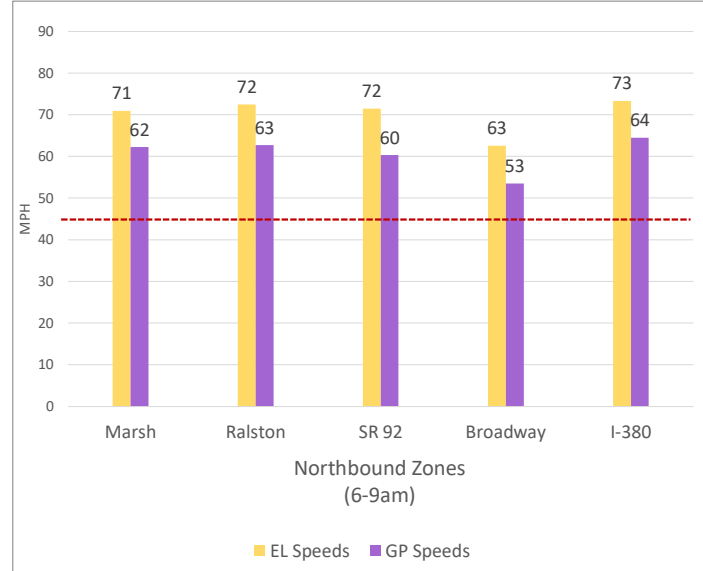
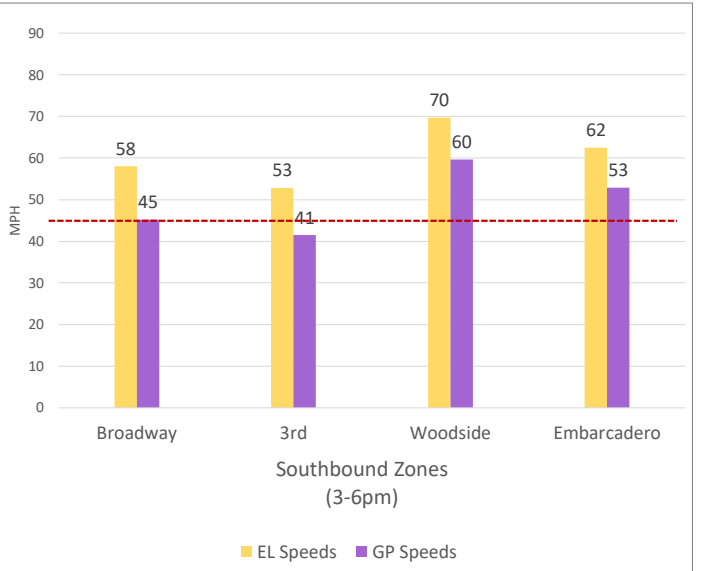
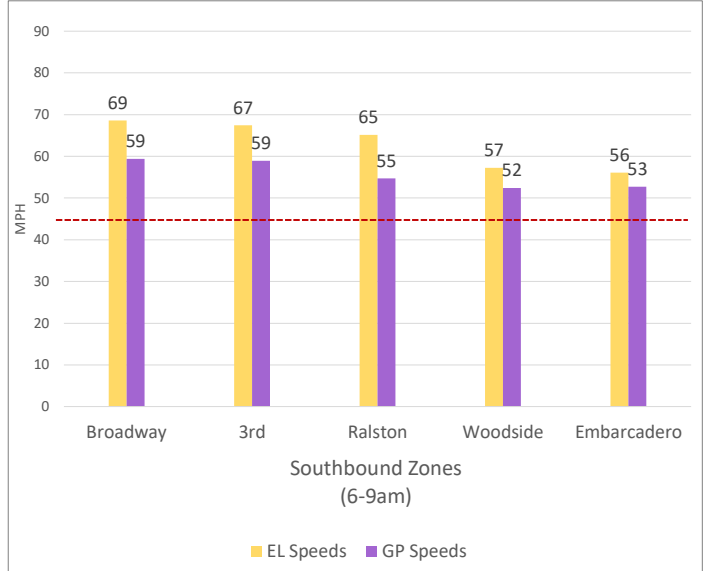
Chart Legend

- Current EL Volume (01/19)
- Current GP Volume (01/19)
- Current EL Speed (01/19)
- Current GP Speed (01/19)
- Current Toll (01/19)
- Max Operational Toll
- Historic EL Volume (01/12)
- Historic GP Volume (01/12)
- Historic EL Speed (01/12)
- Historic GP Speed (01/12)
- Historic Toll (01/12)
- Targeted Min. LOS - 45mph

2. Toll System Performance

DATA DATE: **Week of 1/19 - 1/23**

Speed Differential - Directional Peak Periods



--- Targeted Min. LOS - 45mph