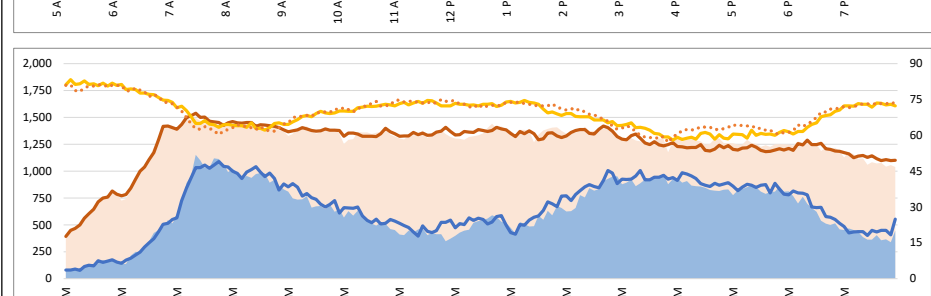
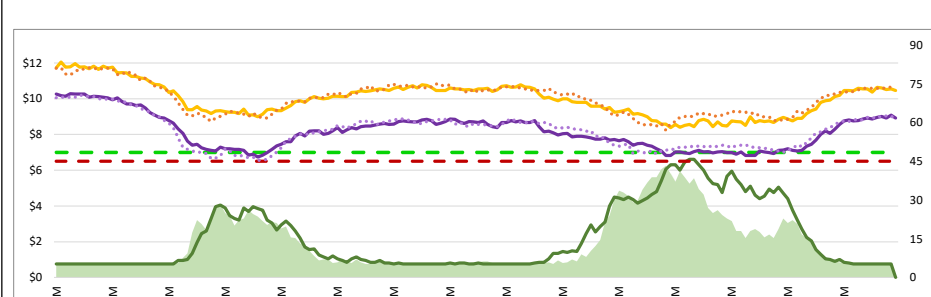
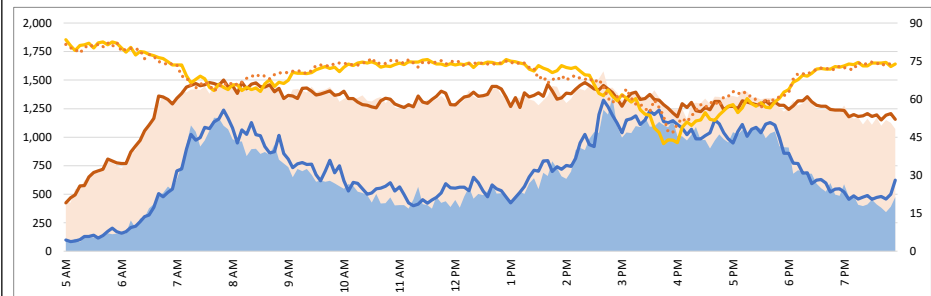
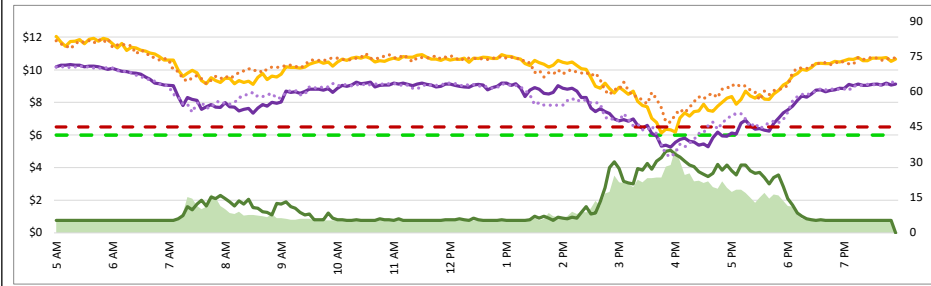
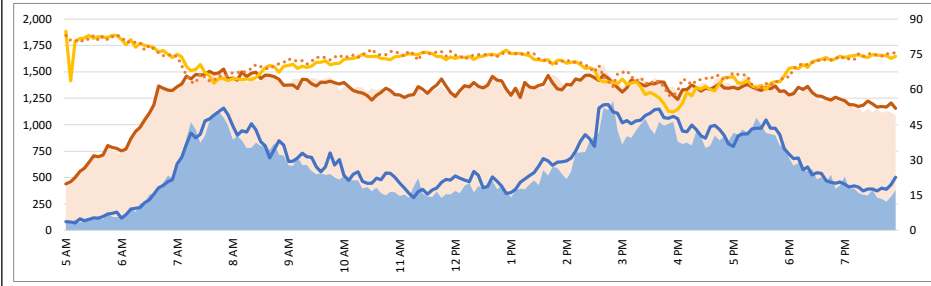
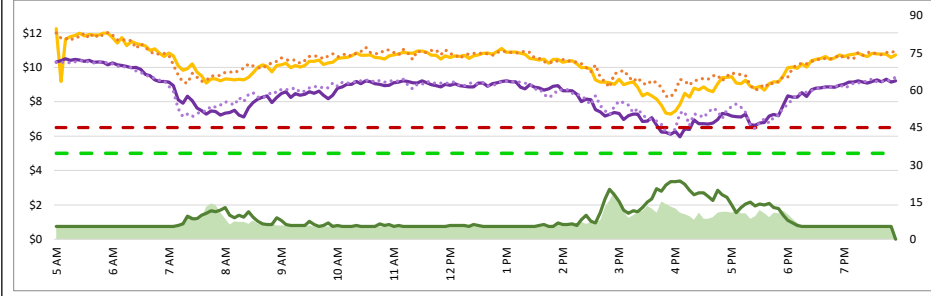


1. Lane Performance

Average Speeds, Volumes & Tolls - Current (Week of 2/2 - 2/6) vs Historic (Week of 1/26 - 1/30)

DATA DATE: **Week of 2/2 - 2/6**



3740 - Broadway SB

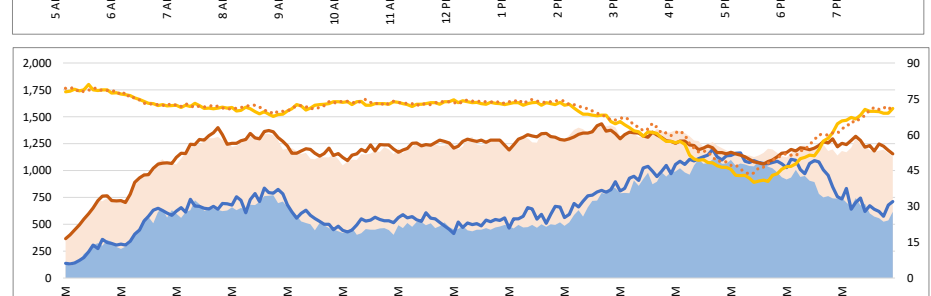
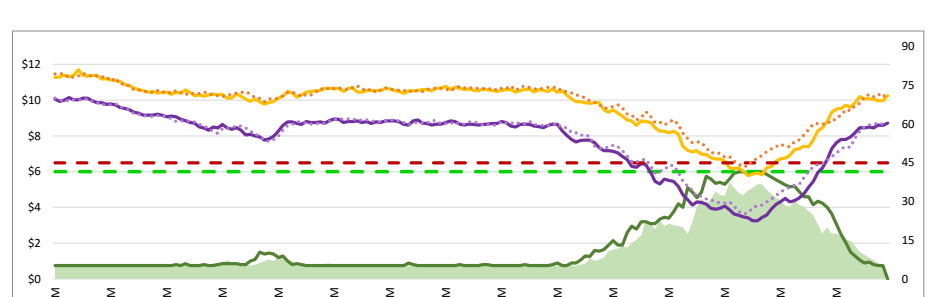
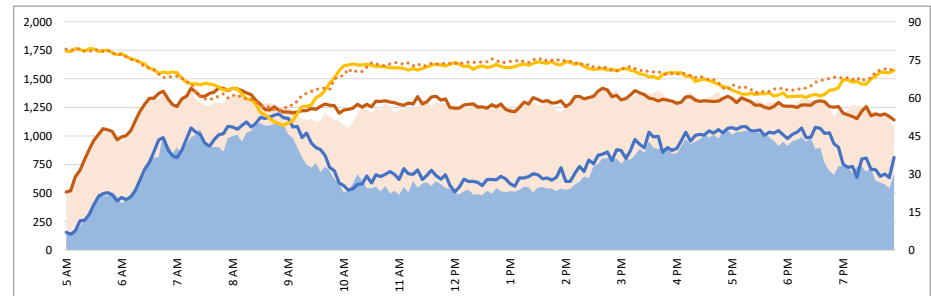
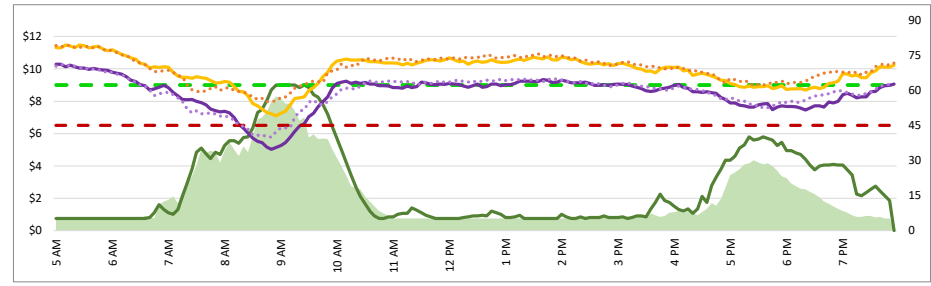
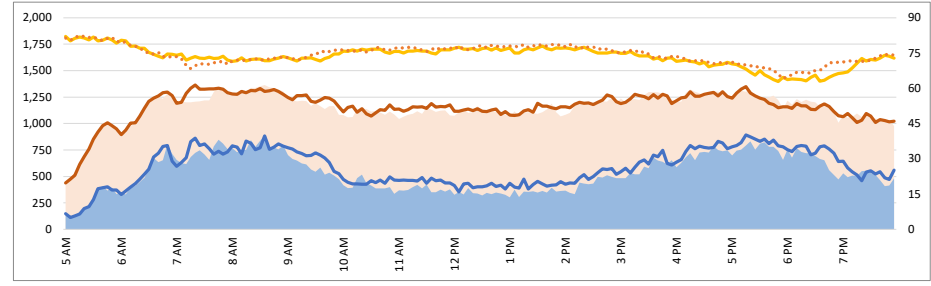
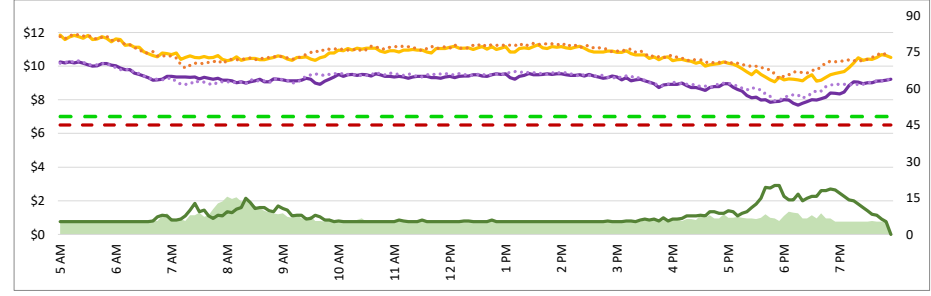
3850 - I-380 NB

3750 - 3rd SB

3840 - Broadway NB

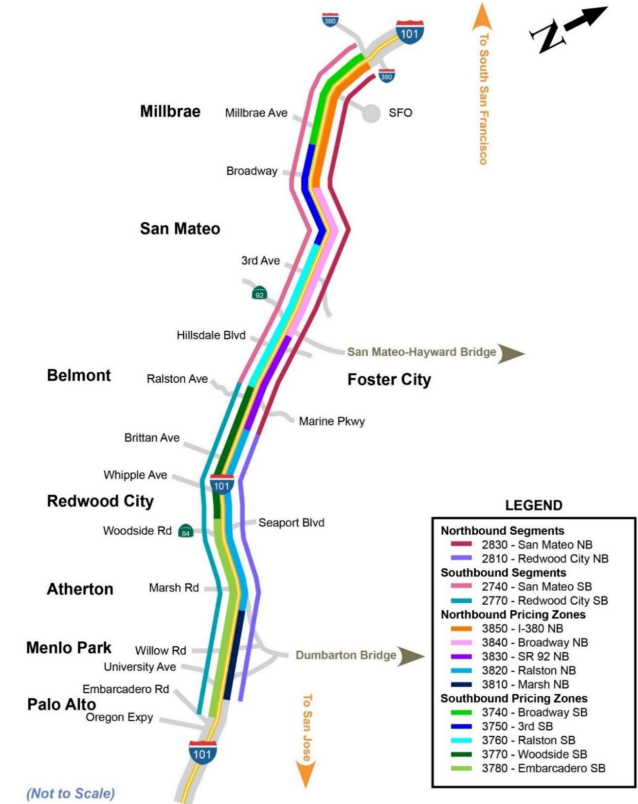
3760 - Ralston SB

3830 - SR 92 NB



Map of SM101 Corridor (Not To Scale)

SM101 Express Lanes Corridor Map



LEGEND

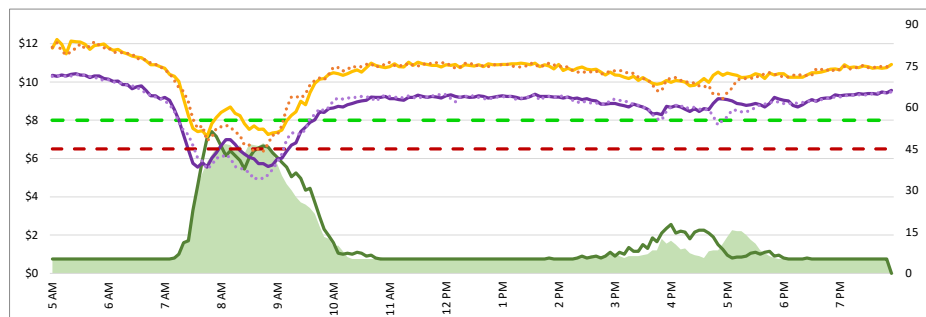
Northbound Segments	2830 - San Mateo NB
Southbound Segments	2740 - San Mateo SB
Northbound Pricing Zones	2770 - Redwood City SB
Southbound Pricing Zones	3850 - I-380 NB
	3840 - Broadway NB
	3830 - SR 92 NB
	3820 - Ralston NB
	3810 - Marsh NB
Southbound Pricing Zones	3740 - Broadway SB
	3750 - 3rd SB
	3760 - Ralston SB
	3770 - Woodside SB
	3780 - Embarcadero SB

Chart Legend

—	Current EL Volume (02/02)	—	Historic EL Volume (01/26)
—	Current GP Volume (02/02)	—	Historic GP Volume (01/26)
—	Current EL Speed (02/02)	—	Historic EL Speed (01/26)
—	Current GP Speed (02/02)	—	Historic GP Speed (01/26)
—	Current Toll (02/02)	—	Historic Toll (01/26)
—	Max Operational Toll	—	Targeted Min. LOS - 45mph

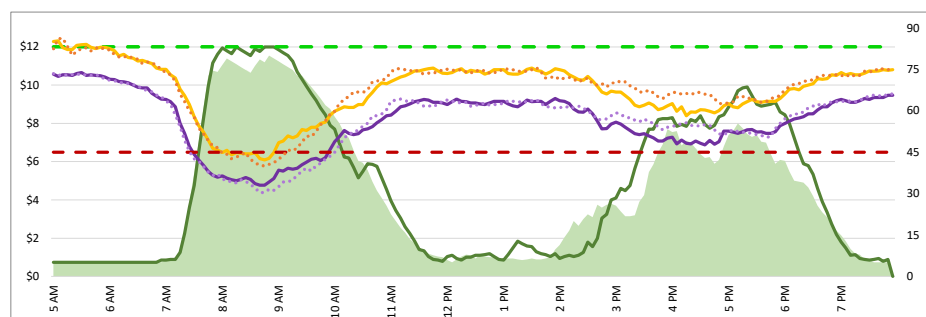
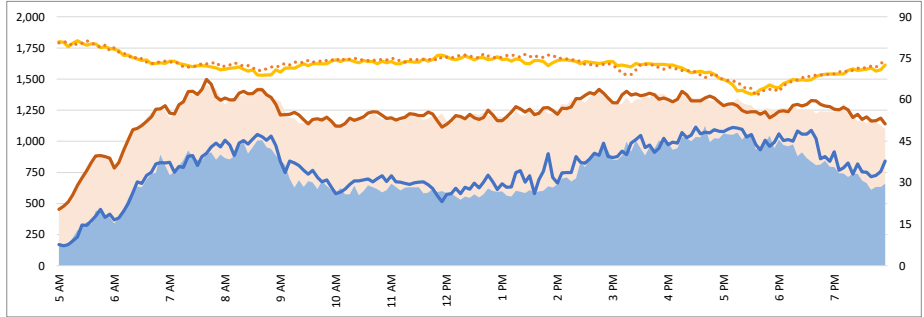
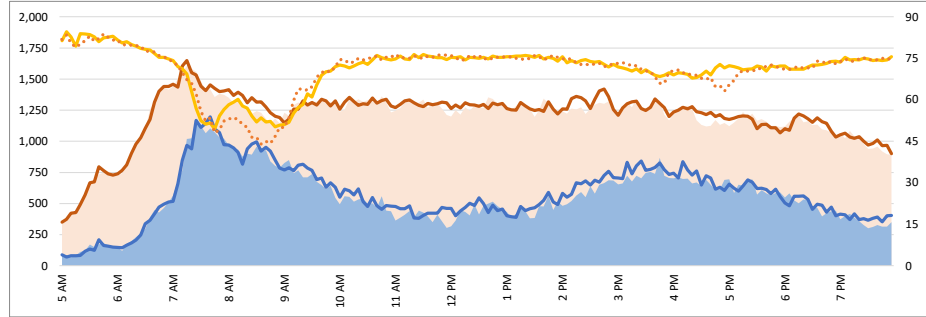
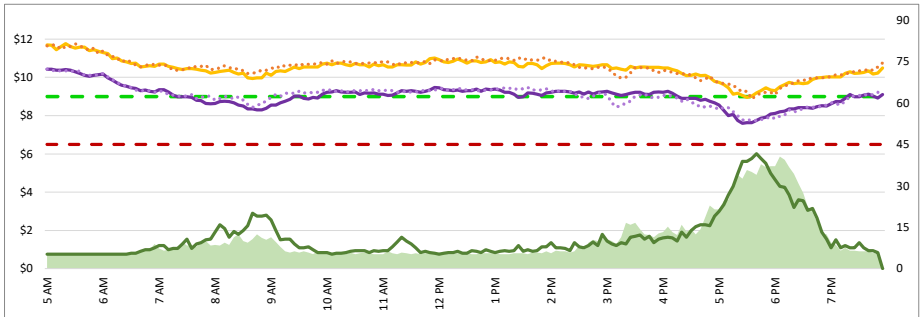
1. Lane Performance

Average Speeds, Volumes & Tolls - Current (Week of 2/2 - 2/6) vs Historic (Week of 1/26 - 1/30)



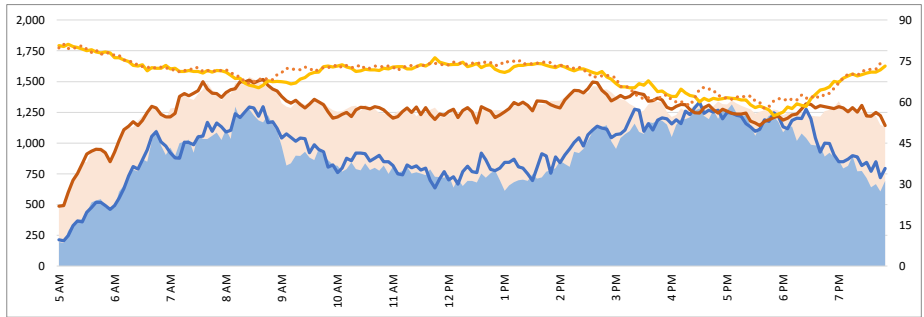
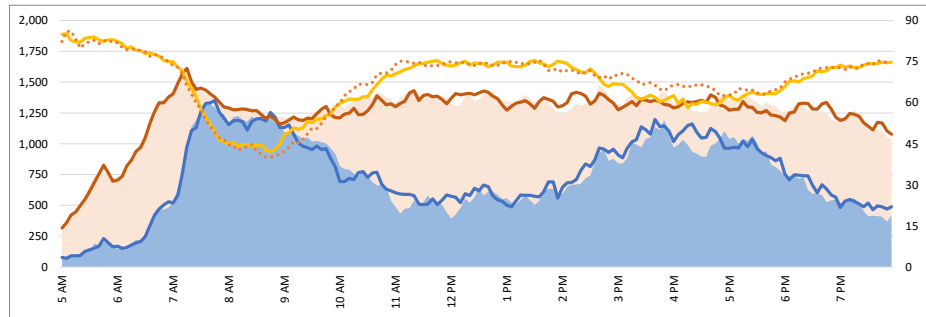
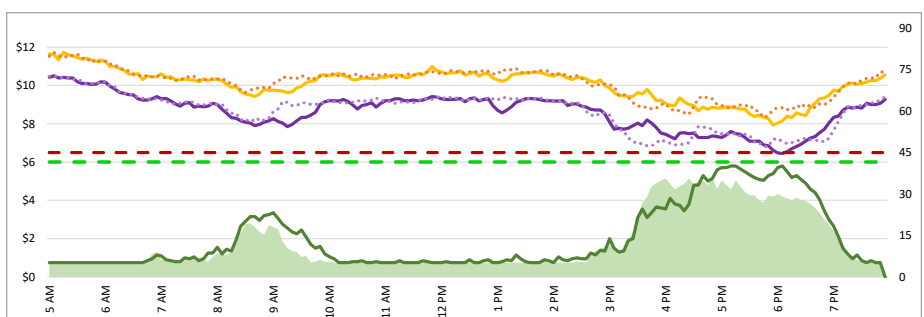
3770 - Woodside SB

3820 - Ralston NB



3780 - Embarcadero SB

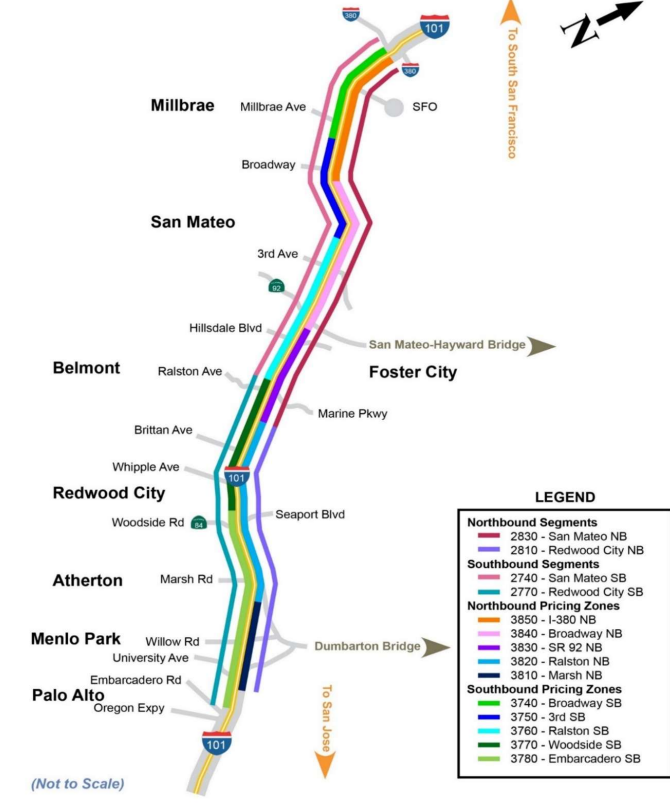
3810 - Marsh NB



DATA DATE: Week of 2/2 - 2/6

Map of SM101 Corridor (Not To Scale)

SM101 Express Lanes Corridor Map



LEGEND

- Northbound Segments**
 - 2830 - San Mateo NB
 - 2810 - Redwood City NB
- Southbound Segments**
 - 2740 - San Mateo SB
 - 2770 - Redwood City SB
- Northbound Pricing Zones**
 - 3850 - I-380 NB
 - 3840 - Broadway NB
 - 3830 - SR 92 NB
 - 3820 - Ralston NB
 - 3810 - Marsh NB
- Southbound Pricing Zones**
 - 3740 - Broadway SB
 - 3750 - 3rd SB
 - 3760 - Ralston SB
 - 3770 - Woodside SB
 - 3780 - Embarcadero SB

(Not to Scale)

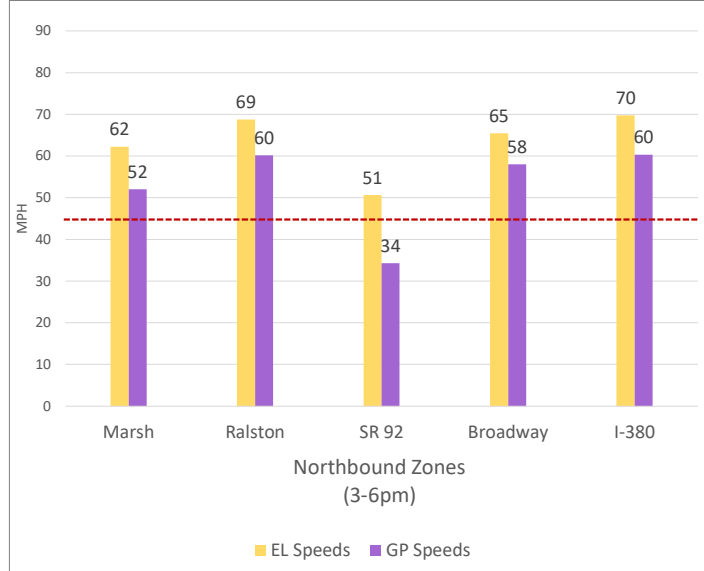
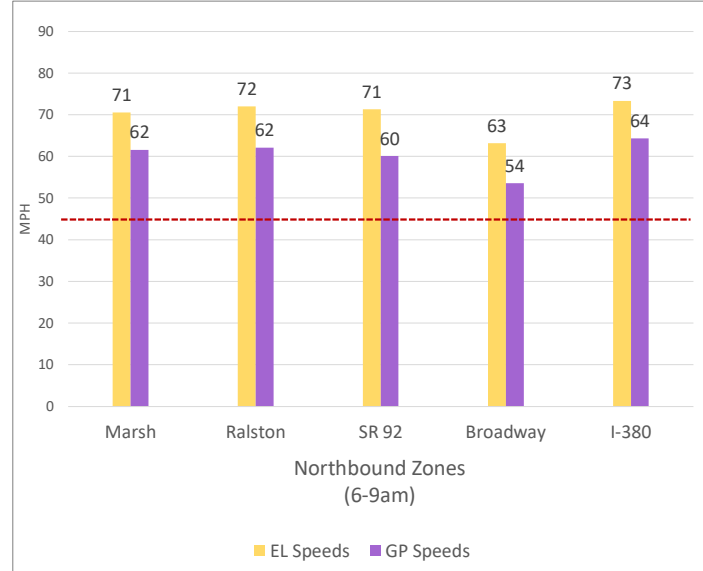
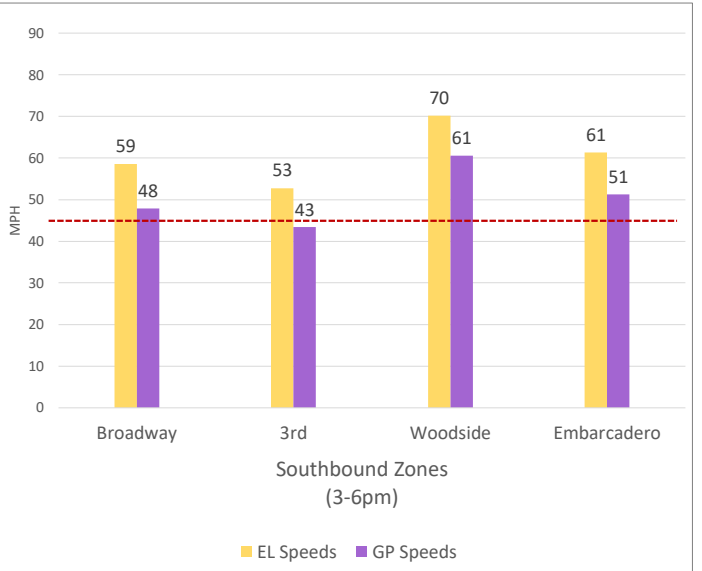
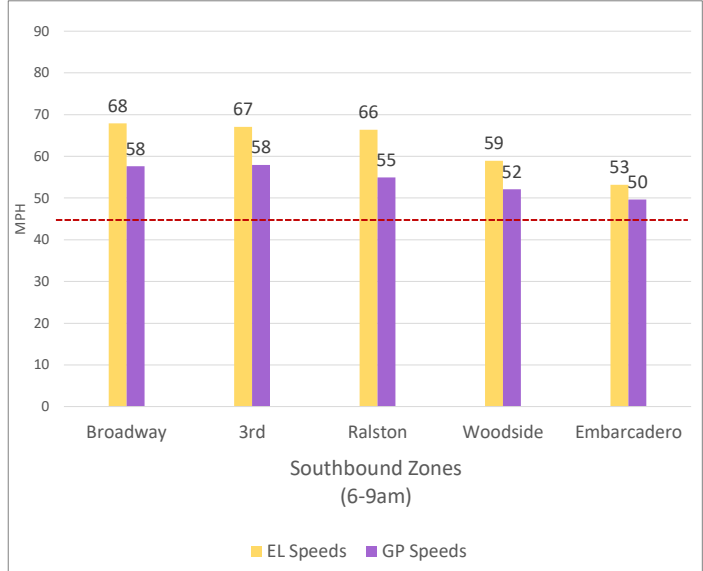
Chart Legend

- Current EL Volume (02/02)
- Current GP Volume (02/02)
- Current EL Speed (02/02)
- Current GP Speed (02/02)
- Current Toll (02/02)
- Max Operational Toll
- Historic EL Volume (01/26)
- Historic GP Volume (01/26)
- Historic EL Speed (01/26)
- Historic GP Speed (01/26)
- Historic Toll (01/26)
- Targeted Min. LOS - 45mph

2. Toll System Performance

DATA DATE: **Week of 2/2 - 2/6**

Speed Differential - Directional Peak Periods



--- Targeted Min. LOS - 45mph