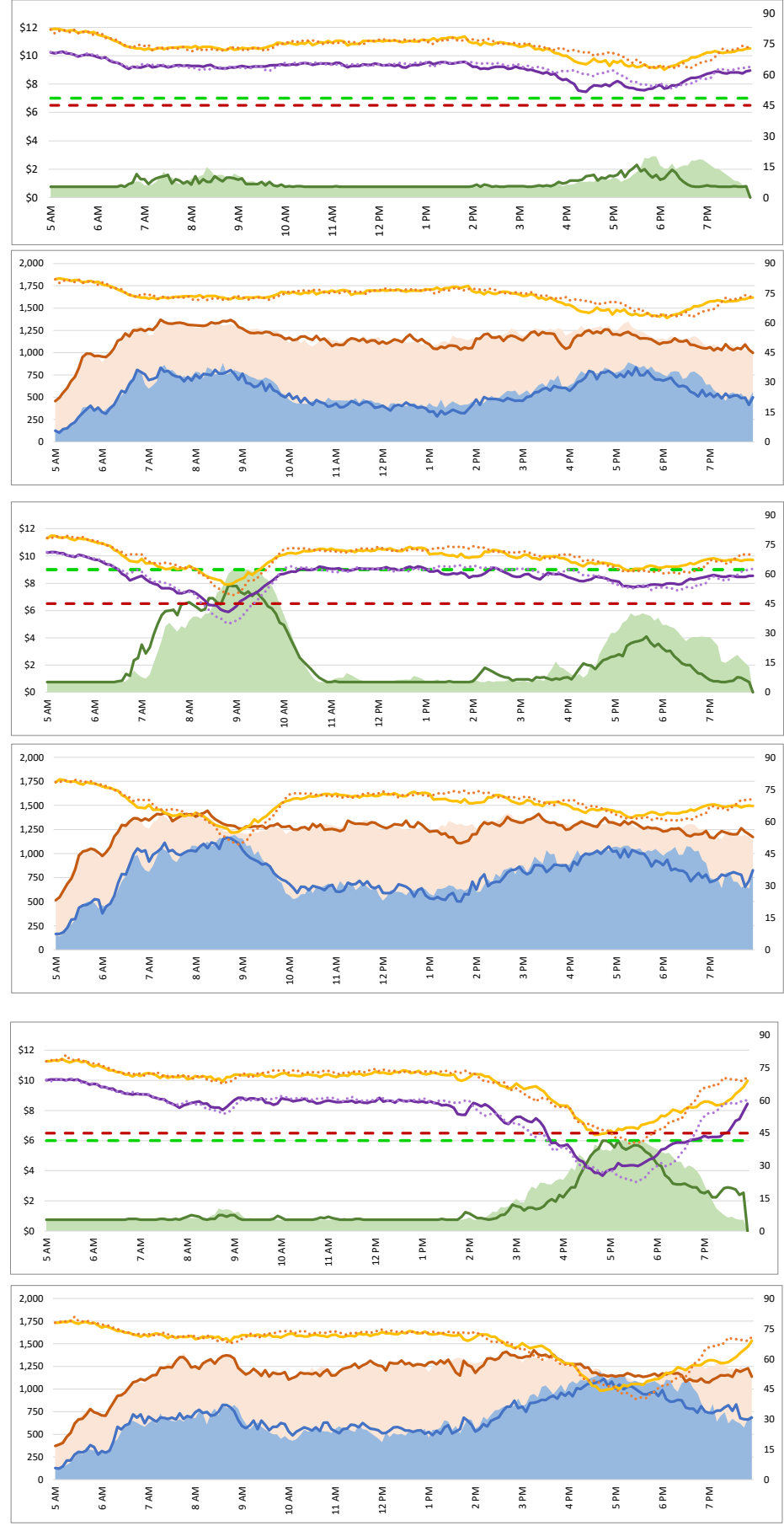
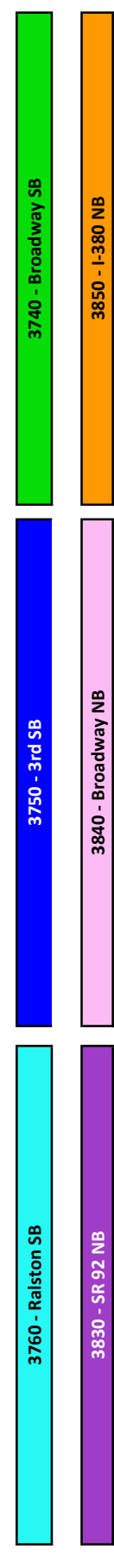
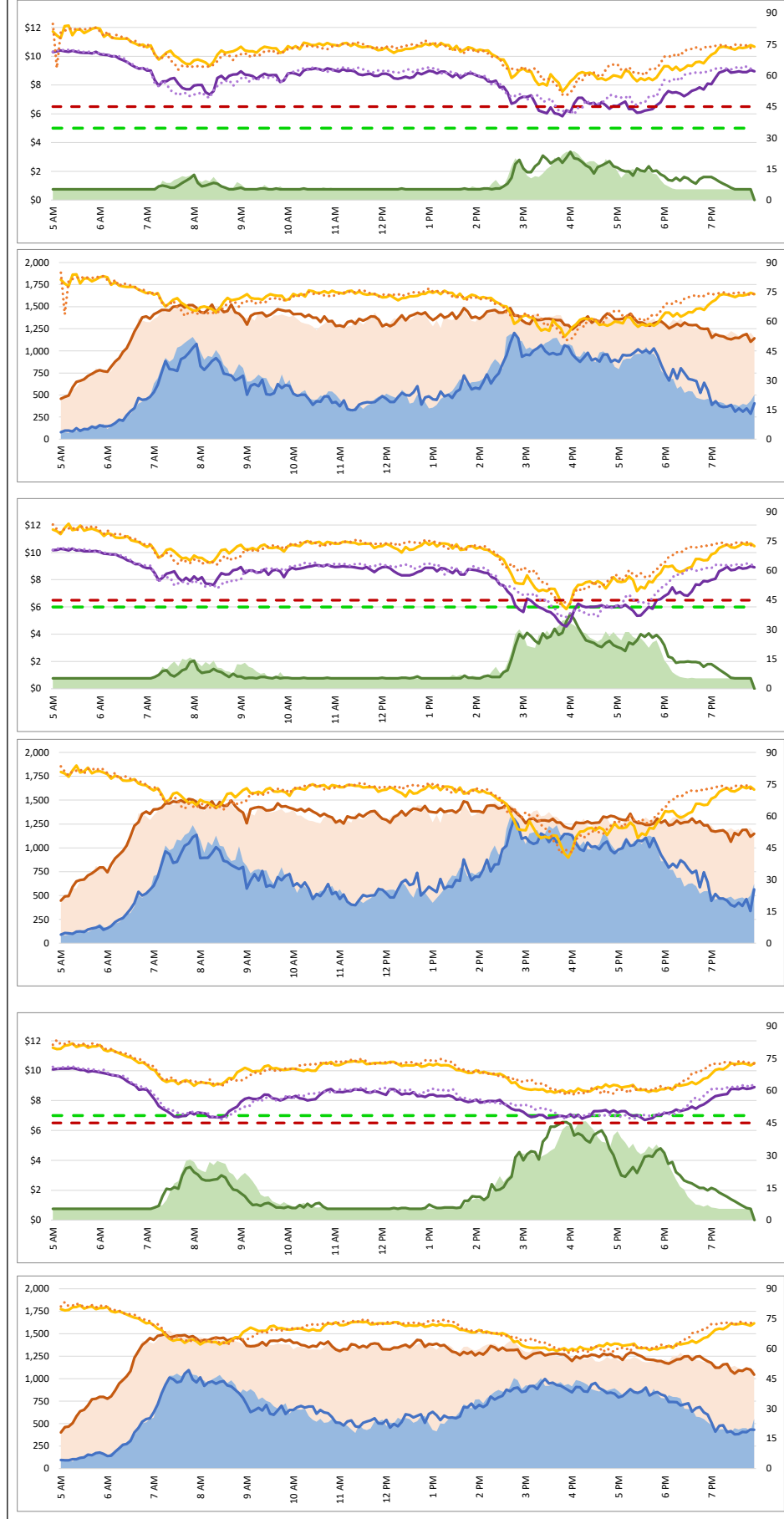
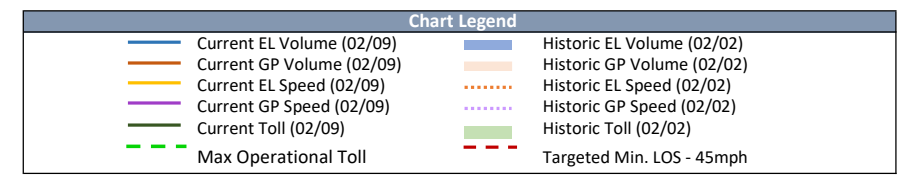
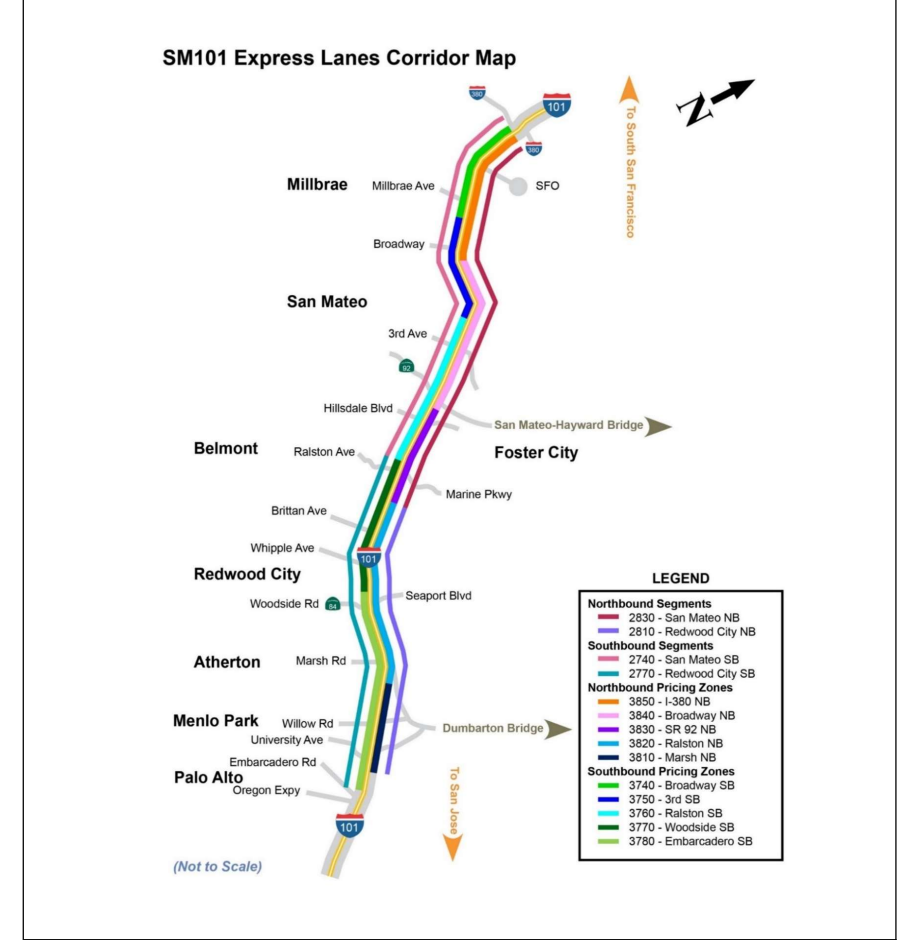


1. Lane Performance

Average Speeds, Volumes & Tolls - Current (Week of 2/9 - 2/13) vs Historic (Week of 2/2 - 2/6)

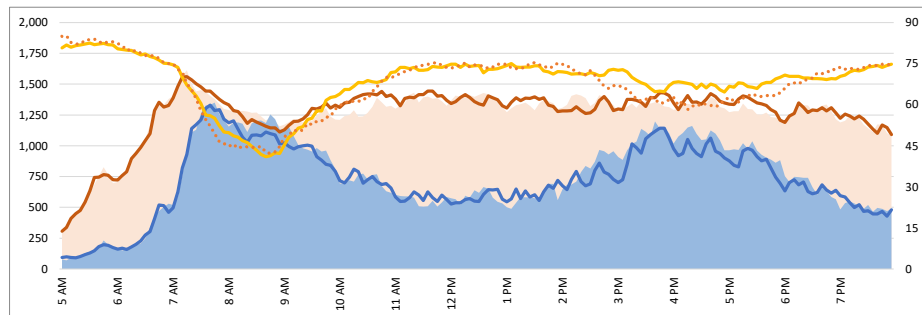
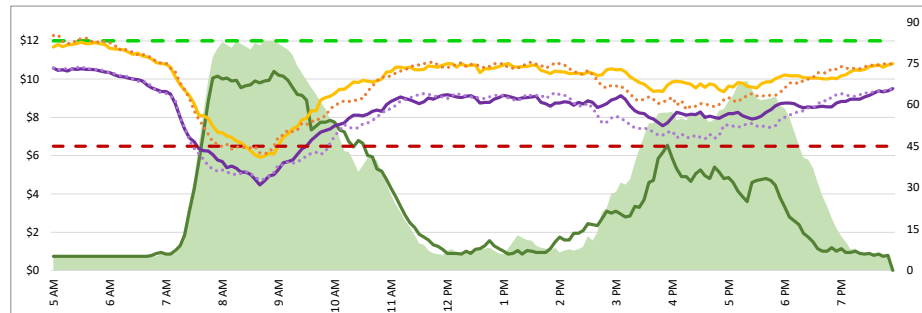
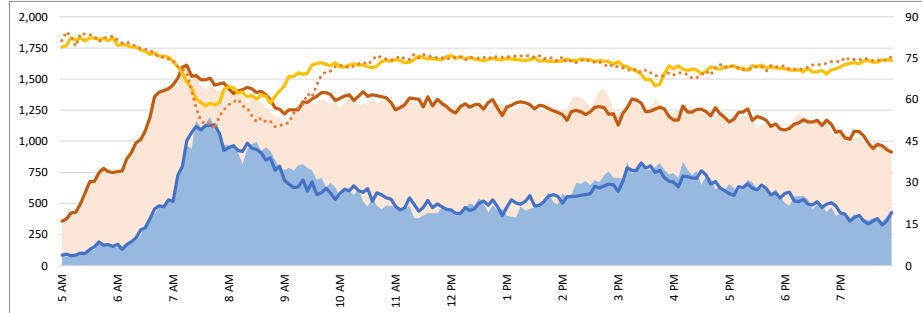
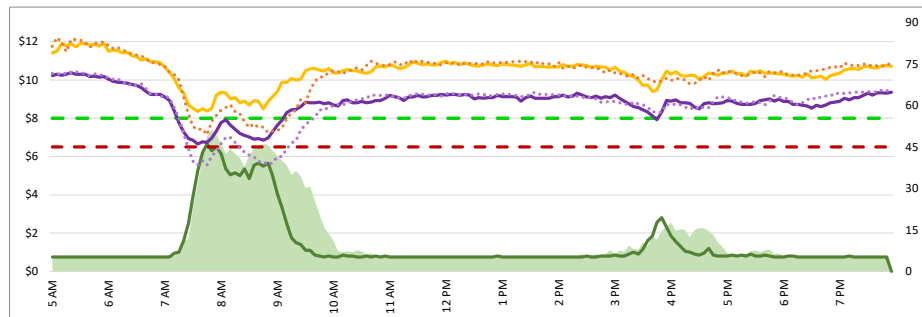


Map of SM101 Corridor (Not To Scale) DATA DATE: Week of 2/9 - 2/13



1. Lane Performance

Average Speeds, Volumes & Tolls - Current (Week of 2/9 - 2/13) vs Historic (Week of 2/2 - 2/6)

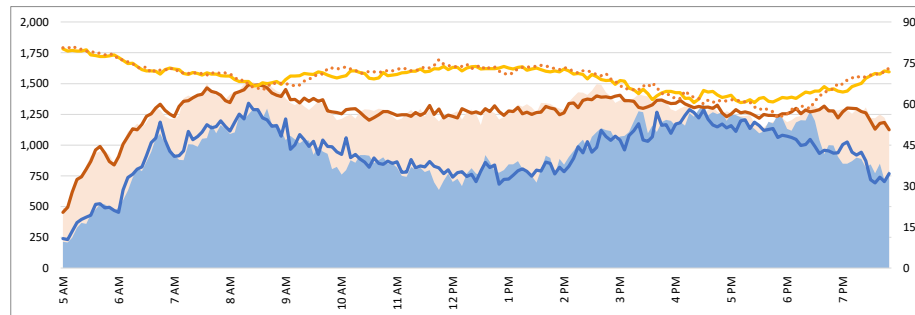
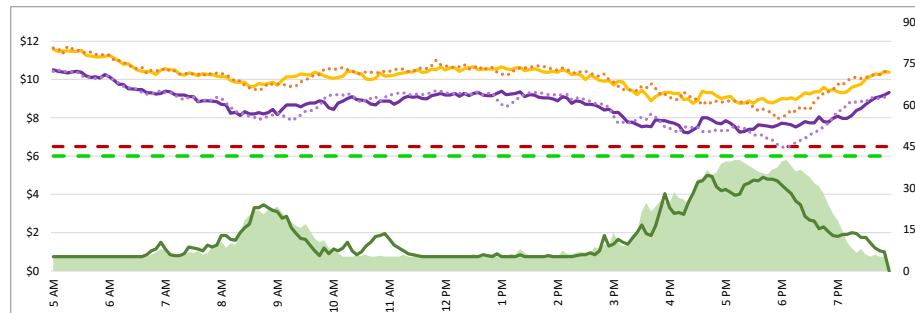
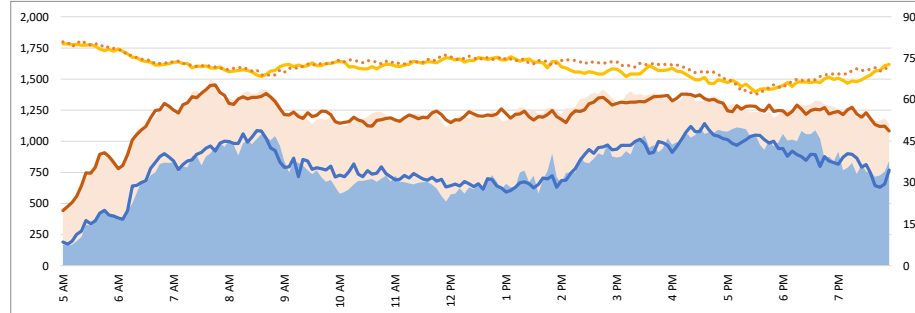
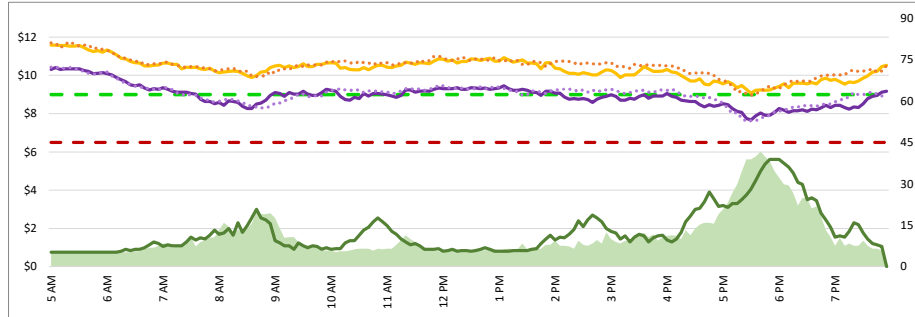


3770 - Woodside SB

3820 - Ralston NB

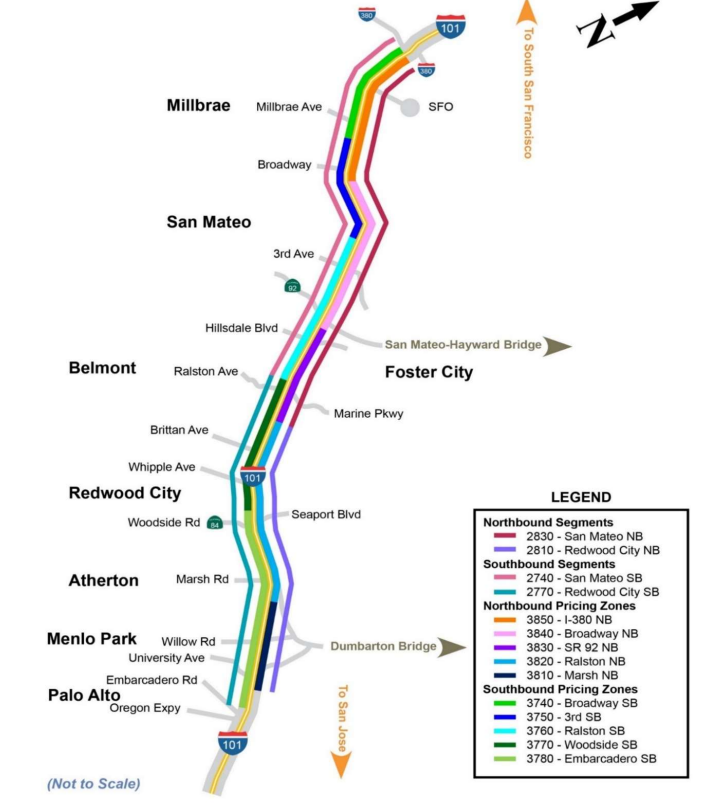
3780 - Embarcadero SB

3810 - Marsh NB



Map of SM101 Corridor (Not To Scale) DATA DATE: Week of 2/9 - 2/13

SM101 Express Lanes Corridor Map



LEGEND

—	2830 - San Mateo NB
—	2810 - Redwood City NB
—	2740 - San Mateo SB
—	2770 - Redwood City SB
—	3850 - I-380 NB
—	3640 - Broadway NB
—	3830 - SR 92 NB
—	3820 - Ralston NB
—	3810 - Marsh NB
—	3740 - Broadway SB
—	3750 - 3rd SB
—	3780 - Ralston SB
—	3770 - Woodside SB
—	3780 - Embarcadero SB

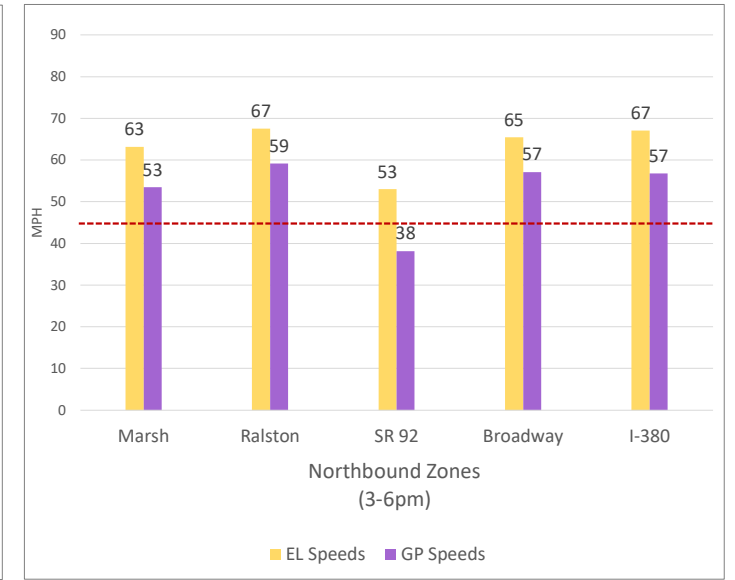
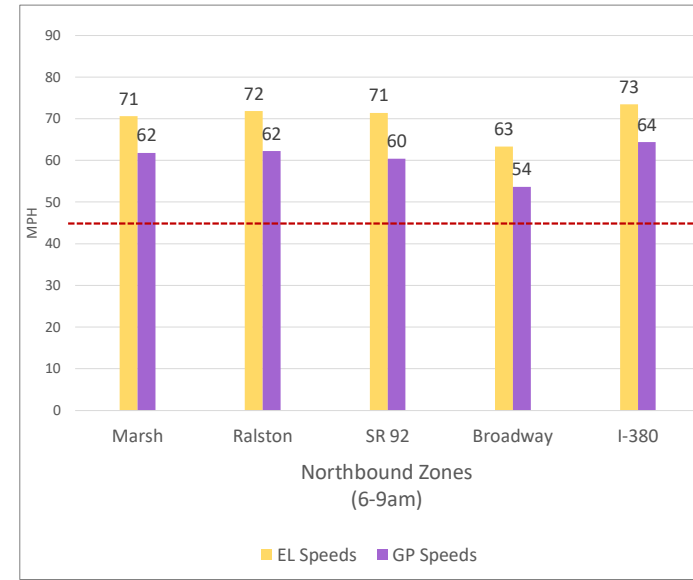
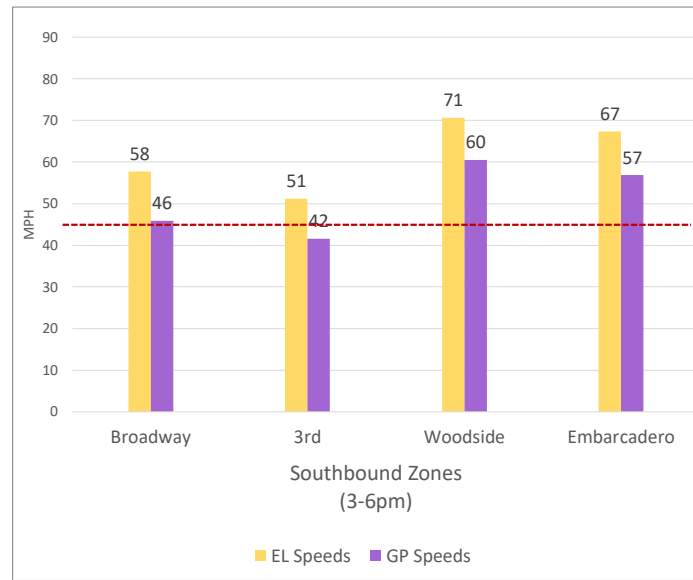
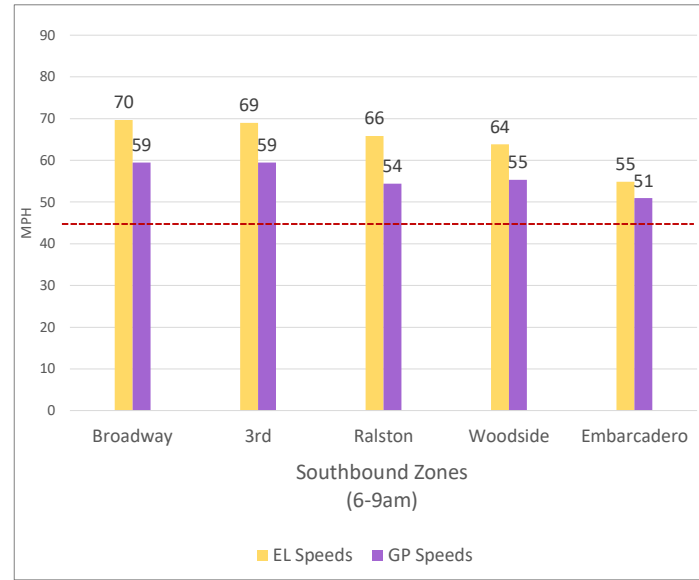
Chart Legend

—	Current EL Volume (02/09)	—	Historic EL Volume (02/02)
—	Current GP Volume (02/09)	—	Historic GP Volume (02/02)
—	Current EL Speed (02/09)	—	Historic EL Speed (02/02)
—	Current GP Speed (02/09)	—	Historic GP Speed (02/02)
—	Current Toll (02/09)	—	Historic Toll (02/02)
- - -	Max Operational Toll	- - -	Targeted Min. LOS - 45mph

2. Toll System Performance

DATA DATE: **Week of 2/9 - 2/13**

Speed Differential - Directional Peak Periods



--- Targeted Min. LOS - 45mph