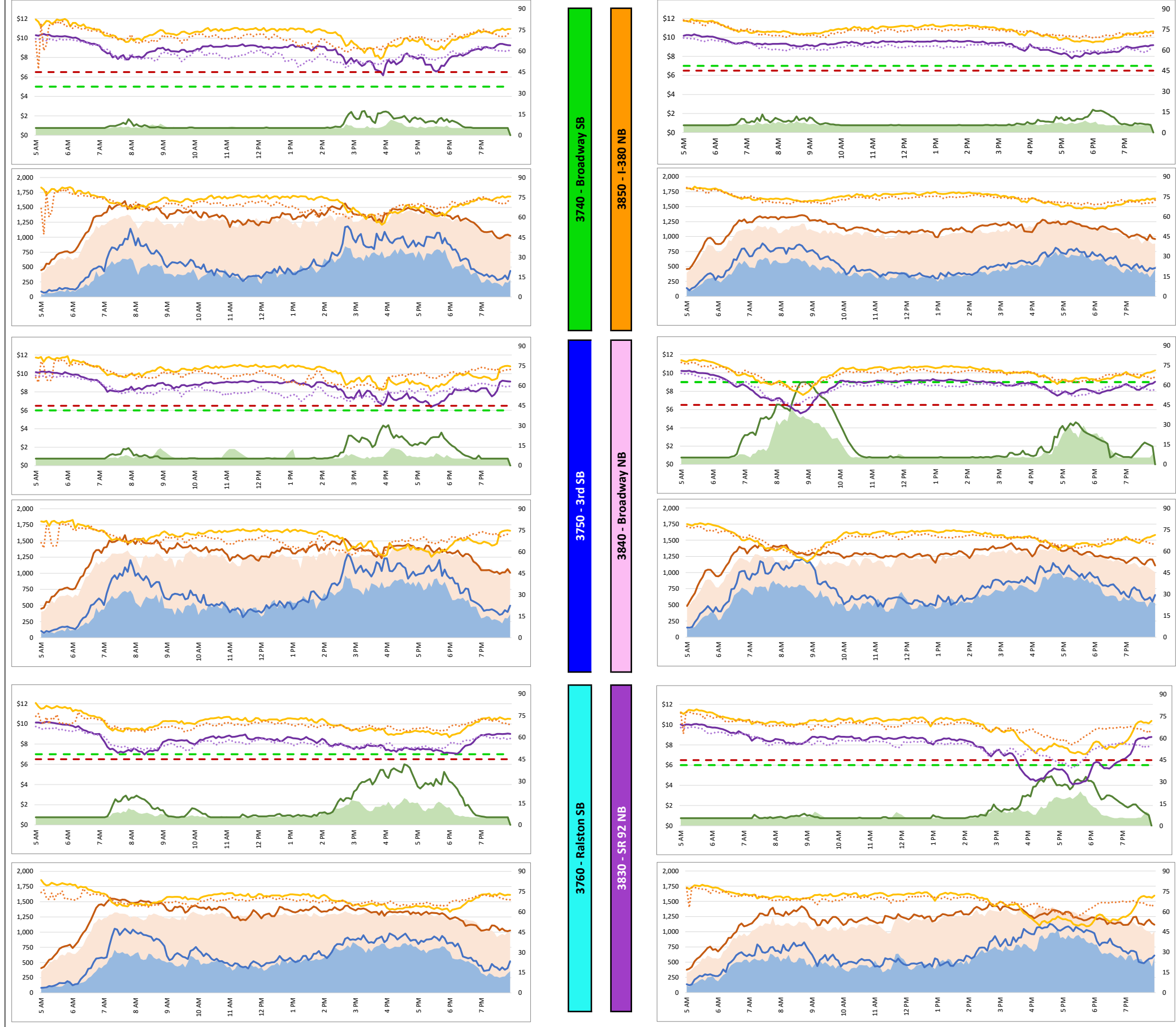


1. Lane Performance

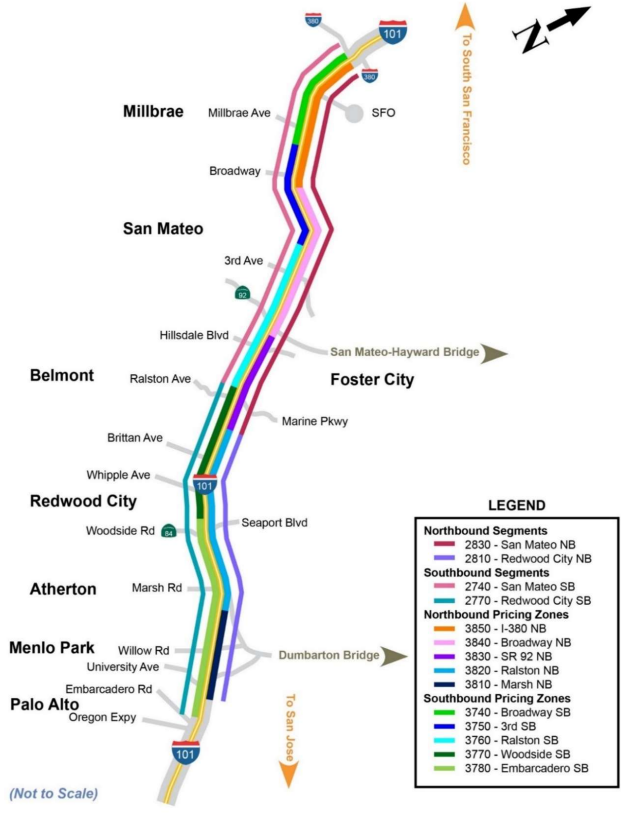
Average Speeds, Volumes & Tolls - Current (Week of 2/23 - 2/27) vs Historic (Week of 2/16 - 2/20)



DATA DATE: **Week of 2/23 - 2/27**

Map of SM101 Corridor (Not To Scale)

SM101 Express Lanes Corridor Map



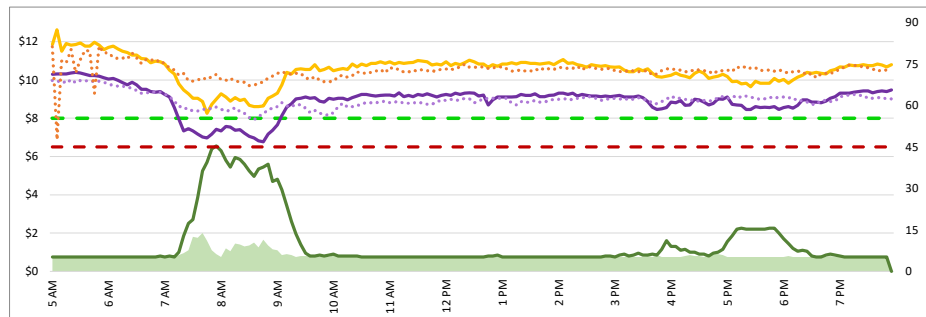
- LEGEND**
- Northbound Segments**
    - 2830 - San Mateo NB
    - 2810 - Redwood City NB
  - Southbound Segments**
    - 2740 - San Mateo SB
    - 2770 - Redwood City SB
  - Northbound Pricing Zones**
    - 3850 - I-380 NB
    - 3840 - Broadway NB
    - 3830 - SR 92 NB
    - 3820 - Ralston NB
    - 3810 - Marsh NB
  - Southbound Pricing Zones**
    - 3740 - Broadway SB
    - 3750 - 3rd SB
    - 3760 - Ralston SB
    - 3770 - Woodside SB
    - 3780 - Embarcadero SB

Chart Legend

- Current EL Volume (02/23)
- Current GP Volume (02/23)
- Current EL Speed (02/23)
- Current GP Speed (02/23)
- Current Toll (02/23)
- Max Operational Toll
- Historic EL Volume (02/16)
- Historic GP Volume (02/16)
- Historic EL Speed (02/16)
- Historic GP Speed (02/16)
- Historic Toll (02/16)
- Targeted Min. LOS - 45mph

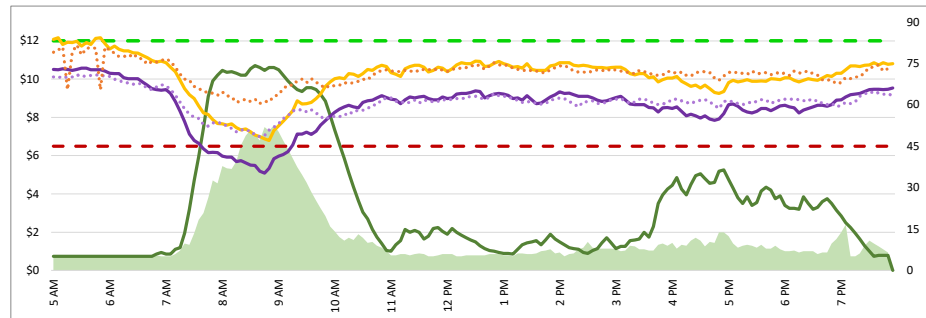
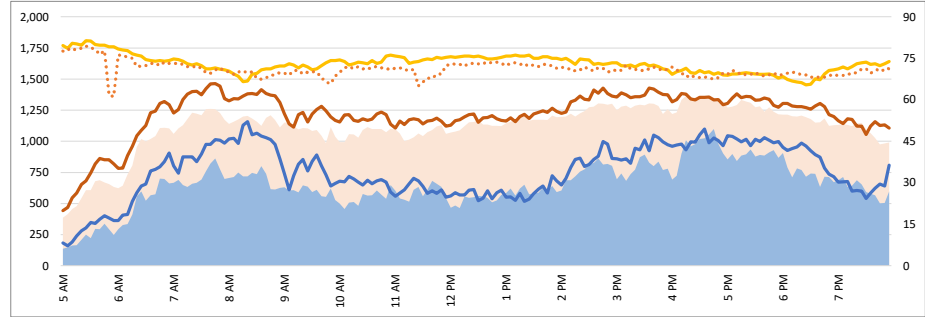
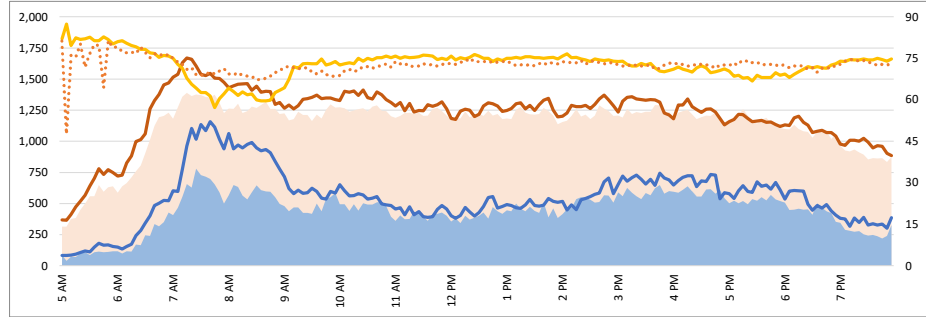
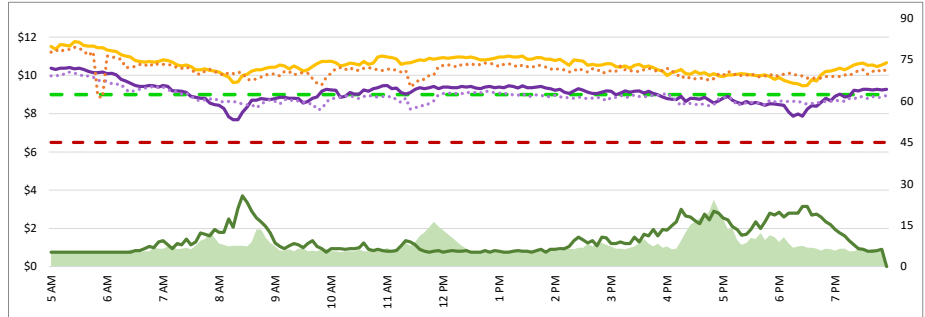
1. Lane Performance

Average Speeds, Volumes & Tolls - Current (Week of 2/23 - 2/27) vs Historic (Week of 2/16 - 2/20)



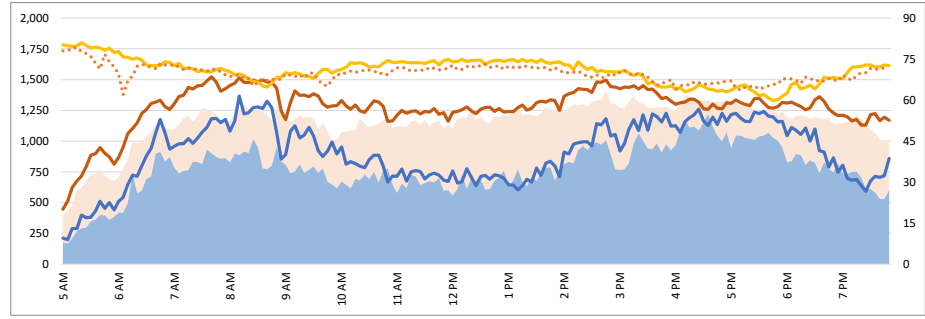
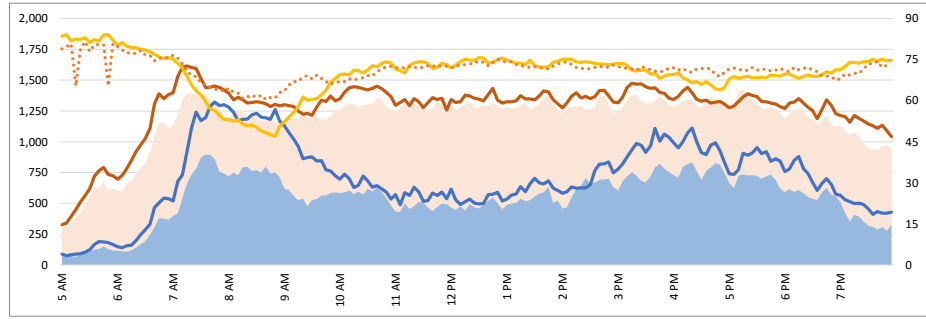
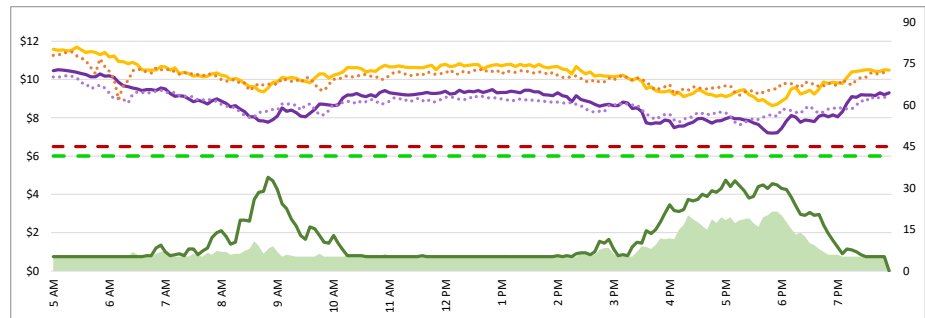
3770 - Woodside SB

3820 - Ralston NB



3780 - Embarcadero SB

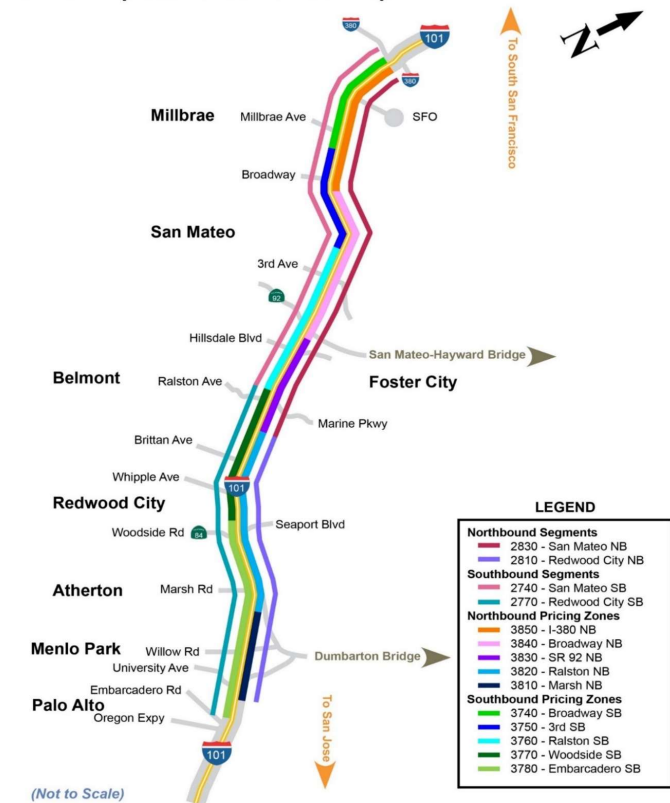
3810 - Marsh NB



DATA DATE: Week of 2/23 - 2/27

Map of SM101 Corridor (Not To Scale)

SM101 Express Lanes Corridor Map



**LEGEND**

- Northbound Segments**
  - 2830 - San Mateo NB
  - 2810 - Redwood City NB
- Southbound Segments**
  - 2740 - San Mateo SB
  - 2770 - Redwood City SB
- Northbound Pricing Zones**
  - 3850 - I-380 NB
  - 3840 - Broadway NB
  - 3830 - SR 92 NB
  - 3820 - Ralston NB
  - 3810 - Marsh NB
- Southbound Pricing Zones**
  - 3740 - Broadway SB
  - 3750 - 3rd SB
  - 3760 - Ralston SB
  - 3770 - Woodside SB
  - 3780 - Embarcadero SB

(Not to Scale)

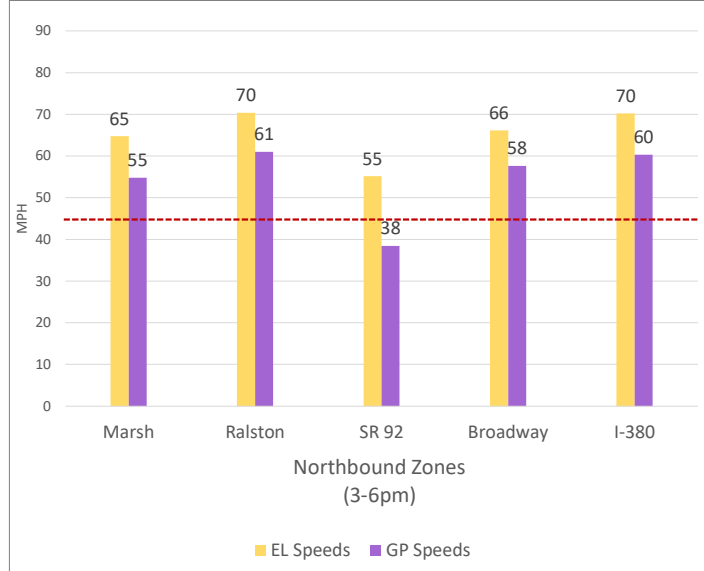
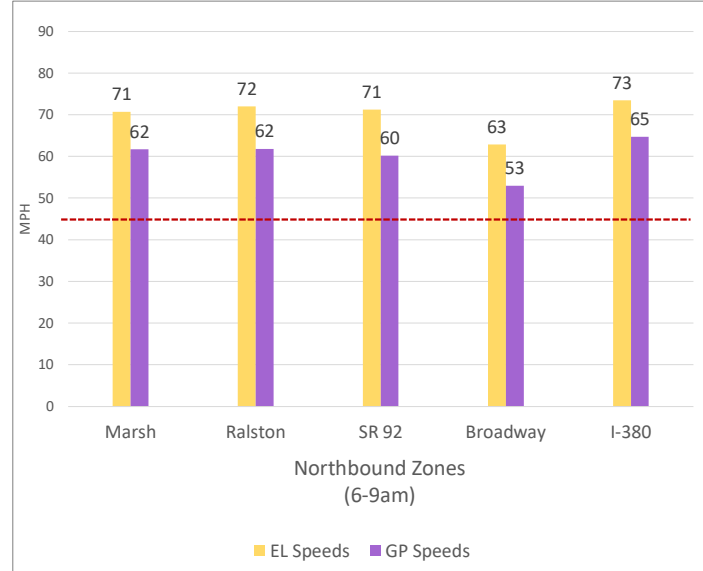
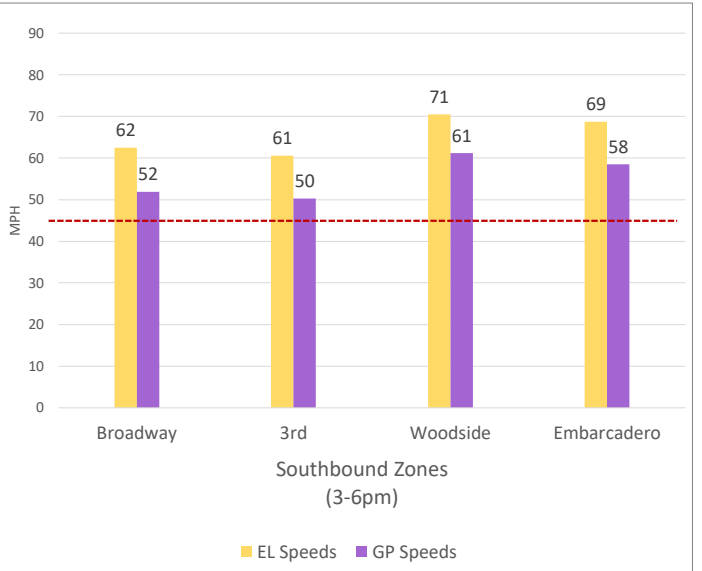
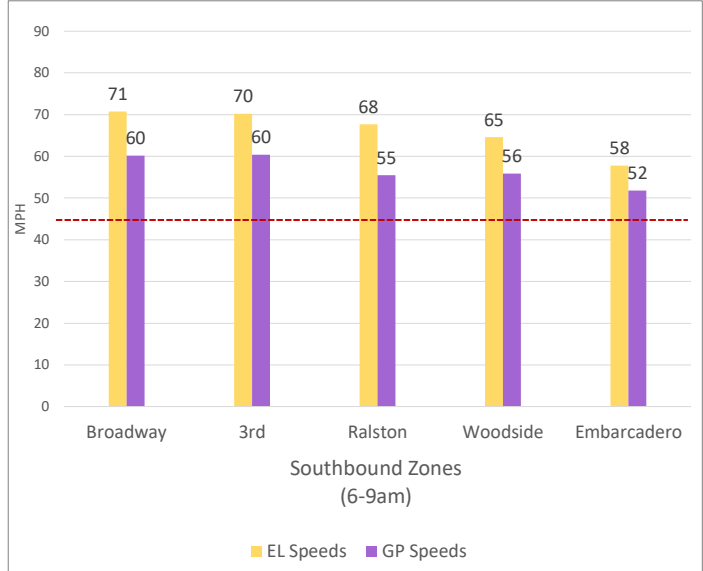
Chart Legend

- Current EL Volume (02/23)
- Current GP Volume (02/23)
- Current EL Speed (02/23)
- Current GP Speed (02/23)
- Current Toll (02/23)
- Max Operational Toll
- Historic EL Volume (02/16)
- Historic GP Volume (02/16)
- Historic EL Speed (02/16)
- Historic GP Speed (02/16)
- Historic Toll (02/16)
- Targeted Min. LOS - 45mph

2. Toll System Performance

DATA DATE: **Week of 2/23 - 2/27**

Speed Differential - Directional Peak Periods



--- Targeted Min. LOS - 45mph