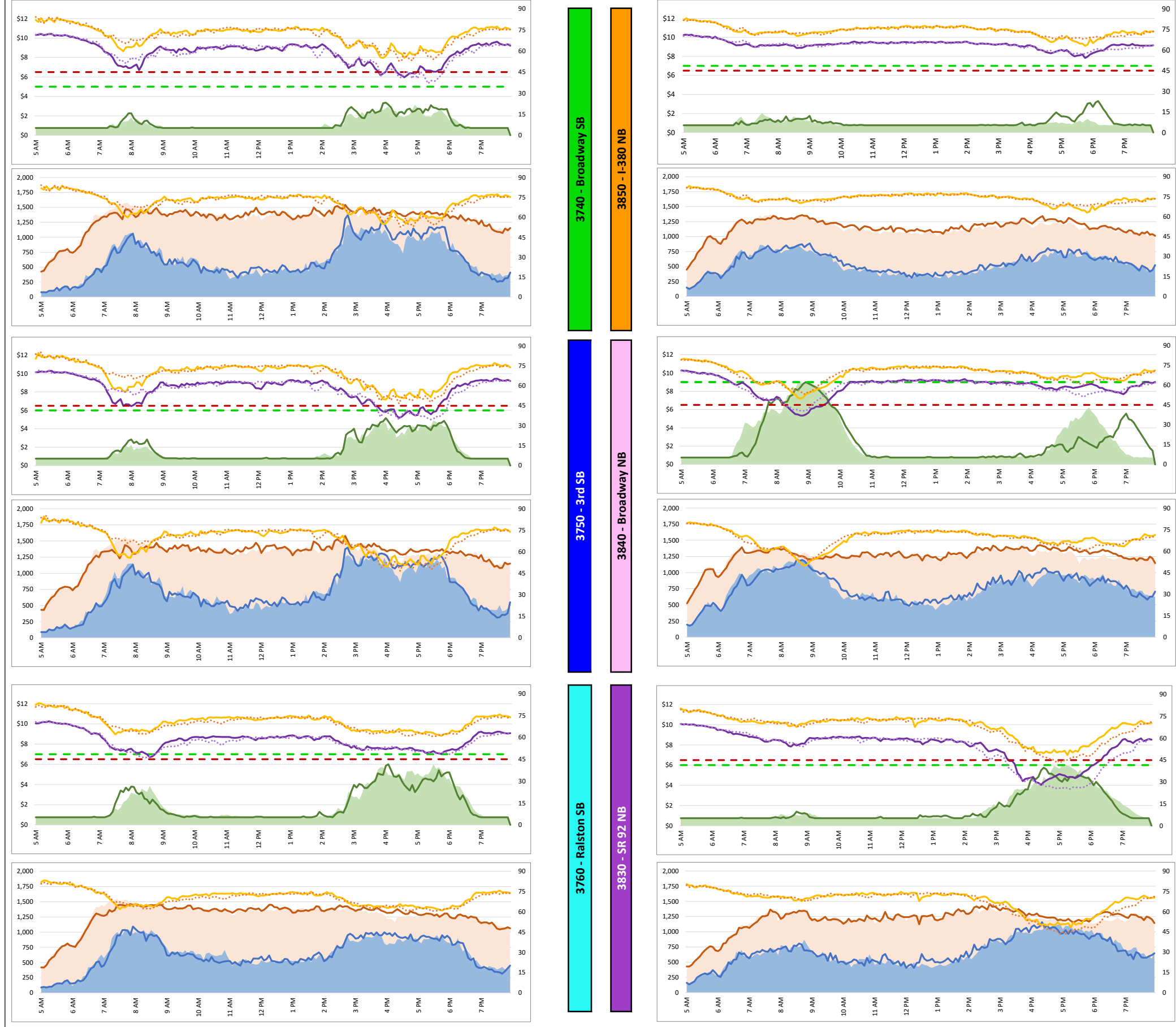


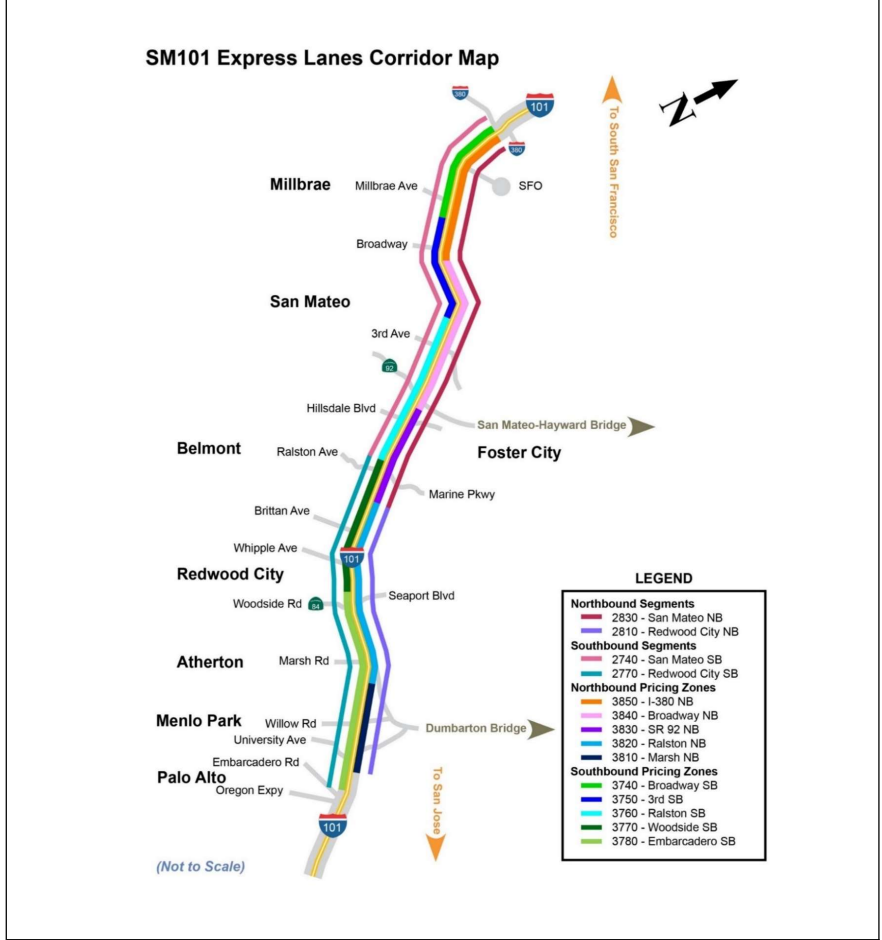
1. Lane Performance

Average Speeds, Volumes & Tolls - Current (Week of 3/9 - 3/13) vs Historic (Week of 3/2 - 3/6)



DATA DATE: **Week of 3/9 - 3/13**

Map of SM101 Corridor (Not To Scale)

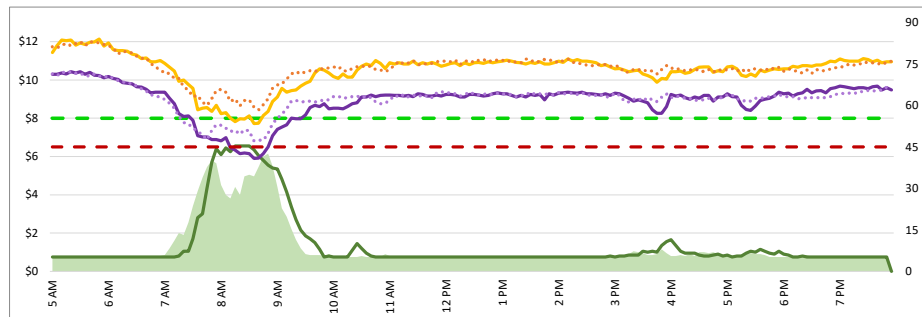


- LEGEND**
- Northbound Segments**
    - 2830 - San Mateo NB
    - 2810 - Redwood City NB
  - Southbound Segments**
    - 2740 - San Mateo SB
    - 2770 - Redwood City SB
  - Northbound Pricing Zones**
    - 3850 - I-380 NB
    - 3840 - Broadway NB
    - 3830 - SR 92 NB
    - 3820 - Ralston NB
    - 3810 - Marsh NB
  - Southbound Pricing Zones**
    - 3740 - Broadway SB
    - 3750 - 3rd SB
    - 3760 - Ralston SB
    - 3770 - Woodside SB
    - 3780 - Embarcadero SB

- Chart Legend**
- Current EL Volume (03/09)
  - Current GP Volume (03/09)
  - Current EL Speed (03/09)
  - Current GP Speed (03/09)
  - Current Toll (03/09)
  - Max Operational Toll
  - Historic EL Volume (03/02)
  - Historic GP Volume (03/02)
  - Historic EL Speed (03/02)
  - Historic GP Speed (03/02)
  - Historic Toll (03/02)
  - Targeted Min. LOS - 45mph

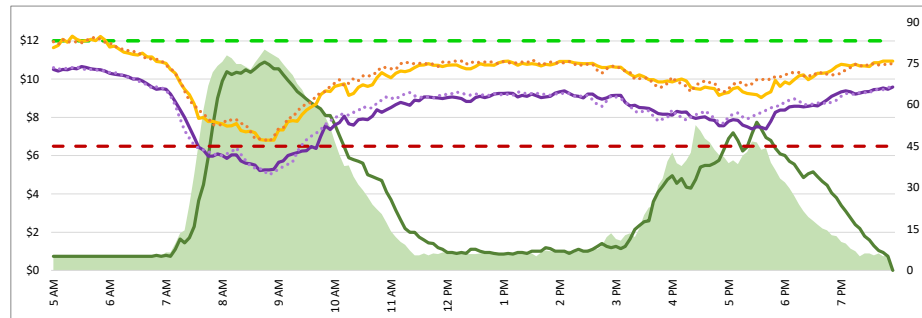
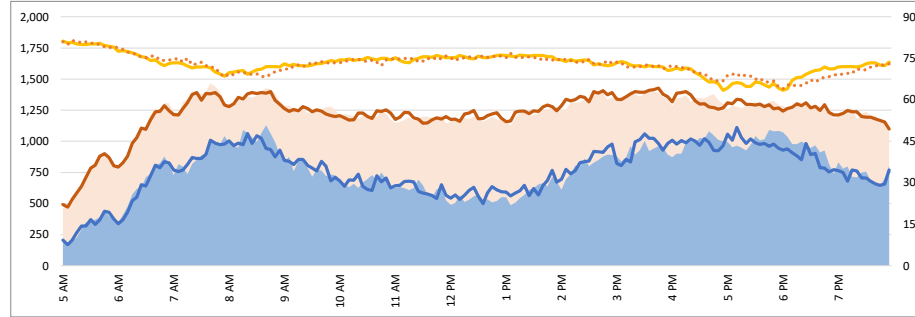
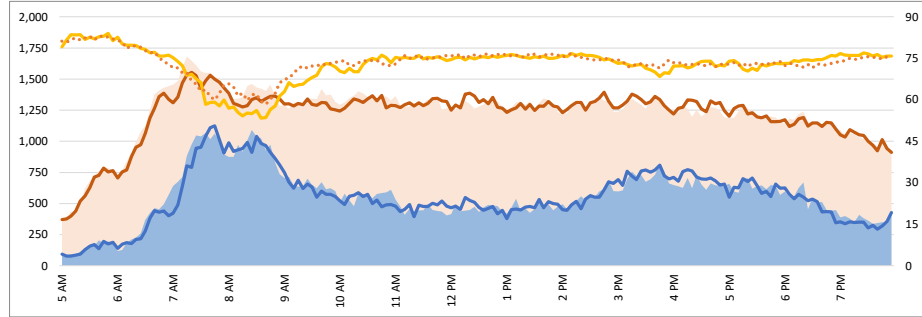
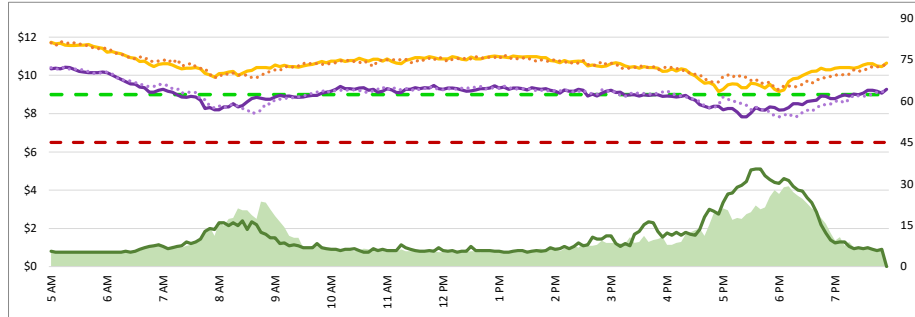
1. Lane Performance

Average Speeds, Volumes & Tolls - Current (Week of 3/9 - 3/13) vs Historic (Week of 3/2 - 3/6)



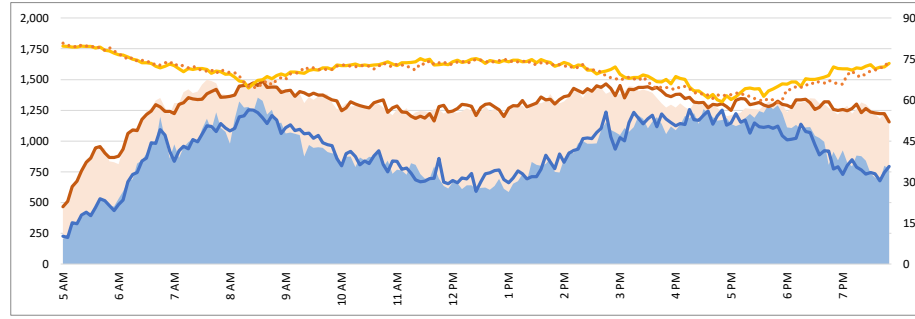
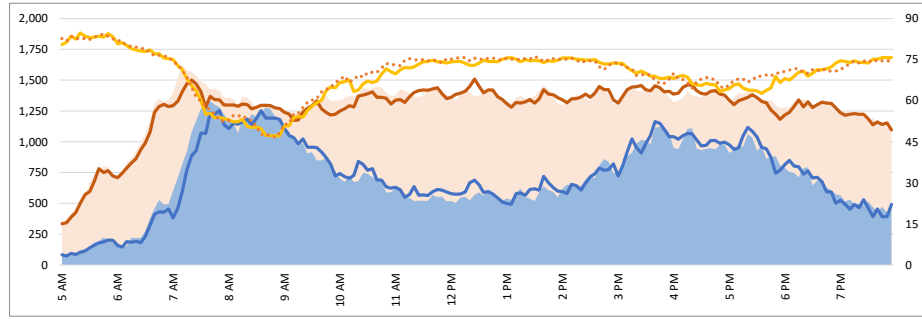
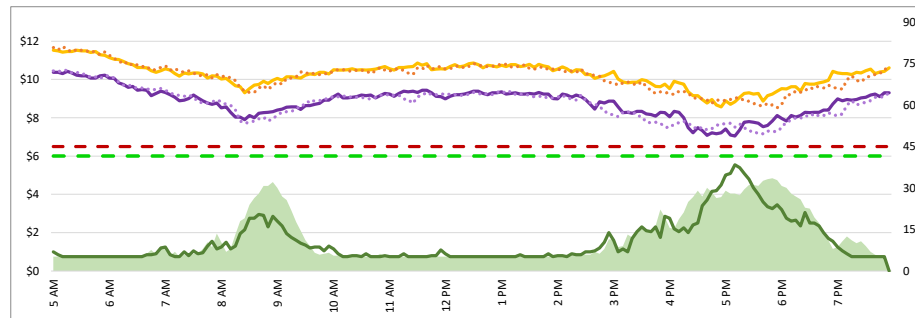
3770 - Woodside SB

3820 - Ralston NB



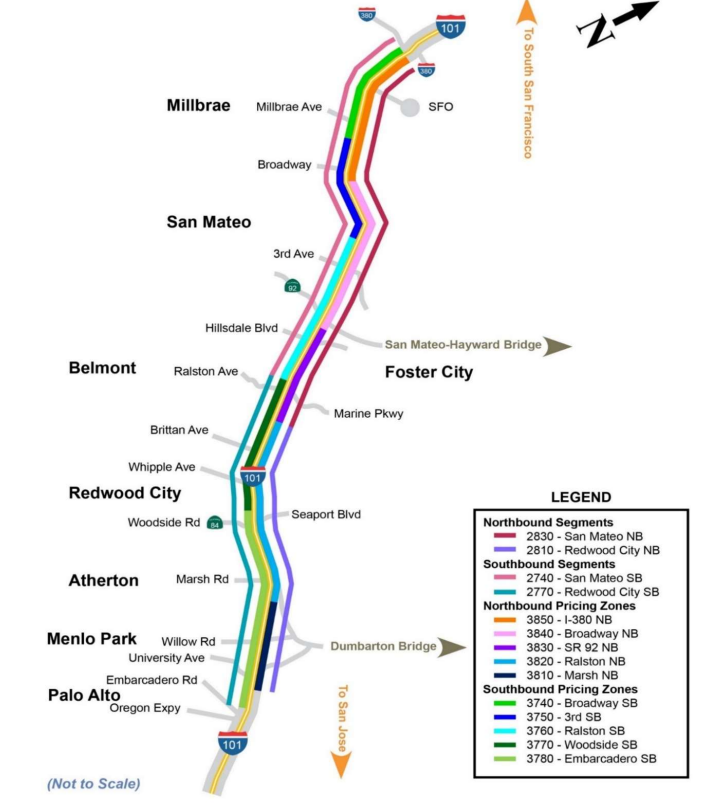
3780 - Embarcadero SB

3810 - Marsh NB



Map of SM101 Corridor (Not To Scale) DATA DATE: Week of 3/9 - 3/13

SM101 Express Lanes Corridor Map



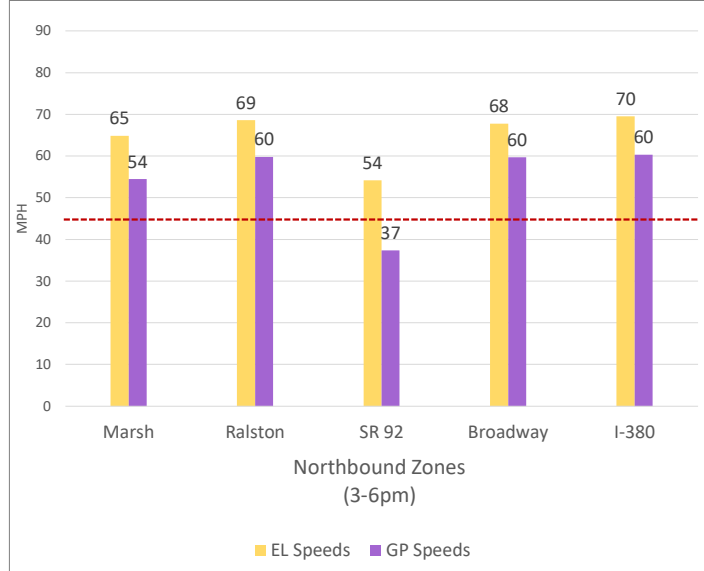
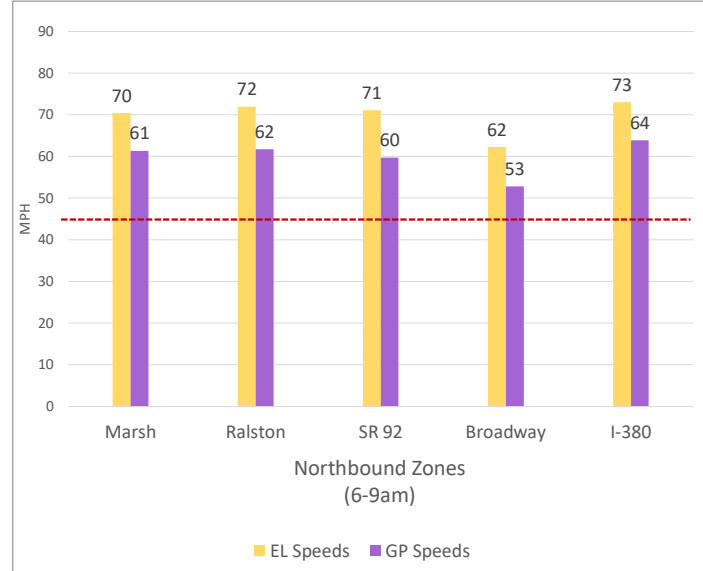
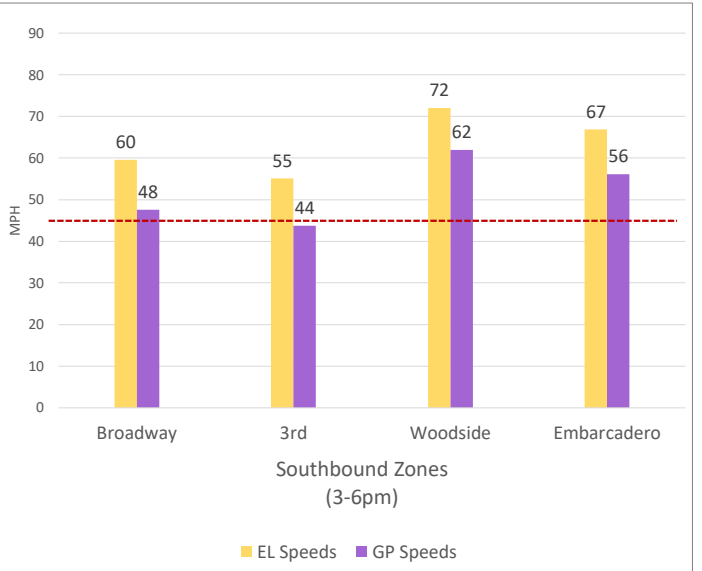
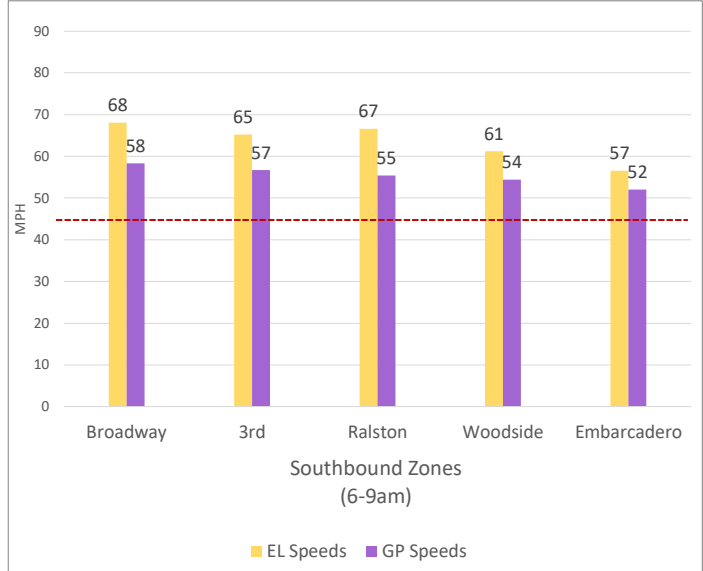
- LEGEND**
- Northbound Segments**
    - 2830 - San Mateo NB
    - 2810 - Redwood City NB
  - Southbound Segments**
    - 2740 - San Mateo SB
    - 2770 - Redwood City SB
  - Northbound Pricing Zones**
    - 3850 - I-380 NB
    - 3840 - Broadway NB
    - 3830 - SR 92 NB
    - 3820 - Ralston NB
    - 3810 - Marsh NB
  - Southbound Pricing Zones**
    - 3740 - Broadway SB
    - 3750 - 3rd SB
    - 3780 - Ralston SB
    - 3770 - Woodside SB
    - 3780 - Embarcadero SB

- Chart Legend**
- Current EL Volume (03/09)
  - Historic EL Volume (03/02)
  - Current GP Volume (03/09)
  - Historic GP Volume (03/02)
  - Current EL Speed (03/09)
  - Historic EL Speed (03/02)
  - Current GP Speed (03/09)
  - Historic GP Speed (03/02)
  - Current Toll (03/09)
  - Historic Toll (03/02)
  - Max Operational Toll
  - Targeted Min. LOS - 45mph

2. Toll System Performance

DATA DATE: **Week of 3/9 - 3/13**

Speed Differential - Directional Peak Periods



--- Targeted Min. LOS - 45mph