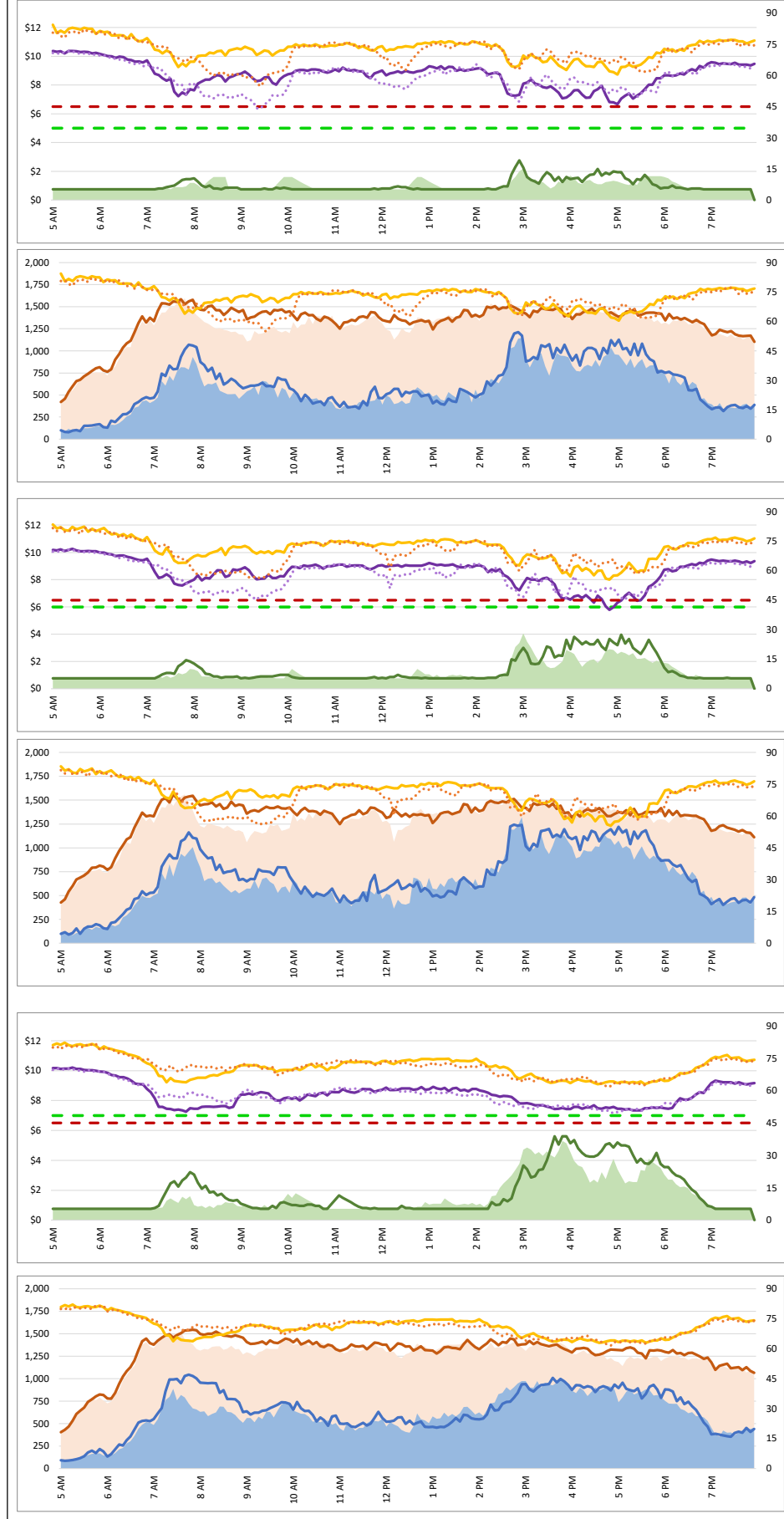


1. Lane Performance

Average Speeds, Volumes & Tolls - Current (Week of 4/13 - 4/17) vs Historic (Week of 4/6 - 4/10)



3740 - Broadway SB

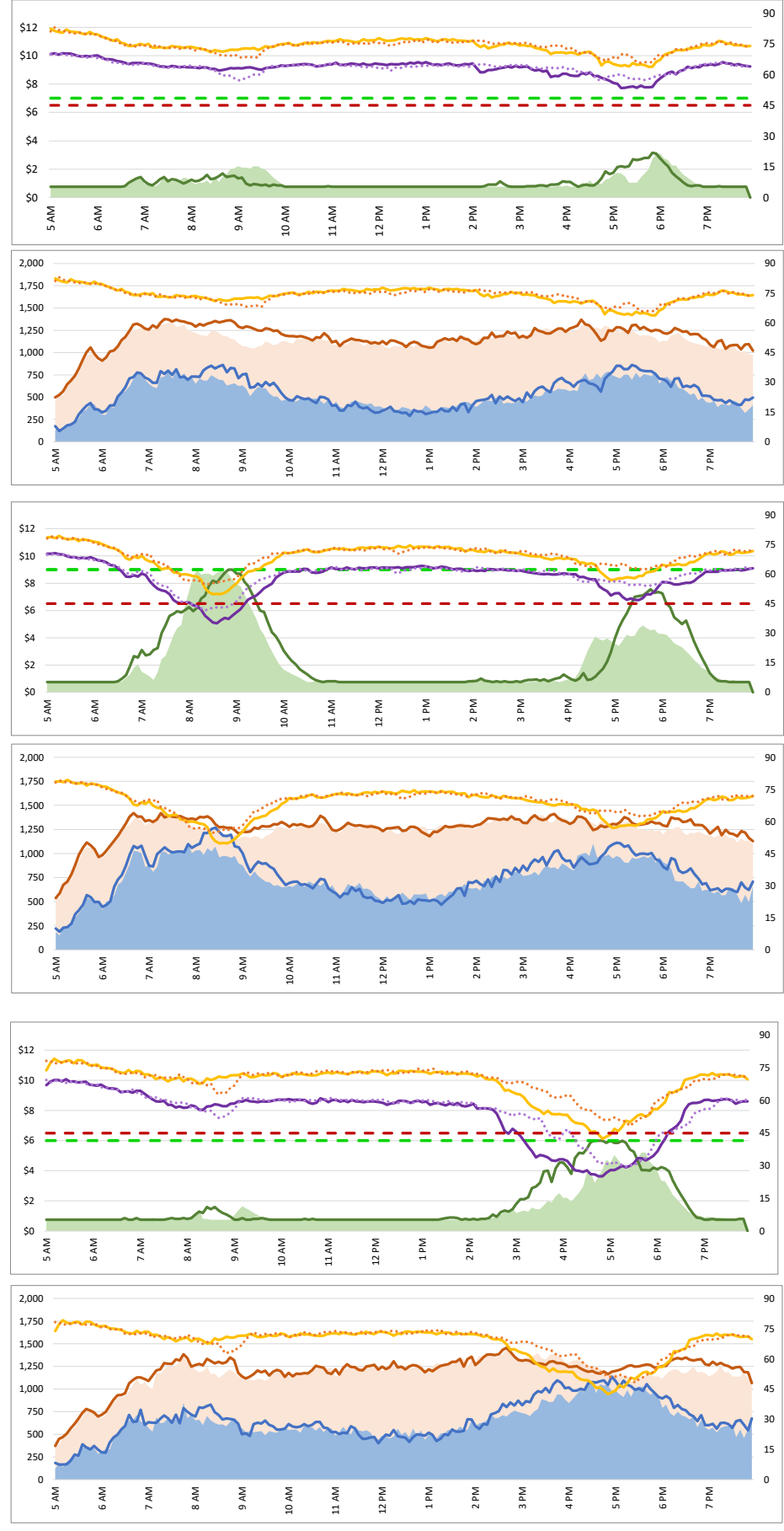
3850 - I-380 NB

3750 - 3rd SB

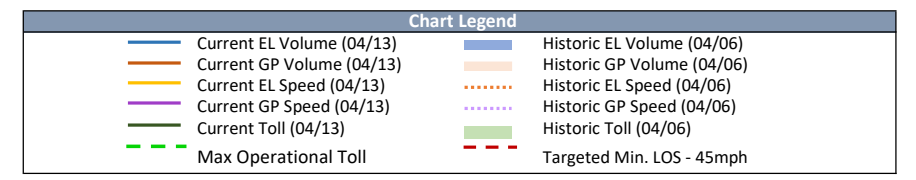
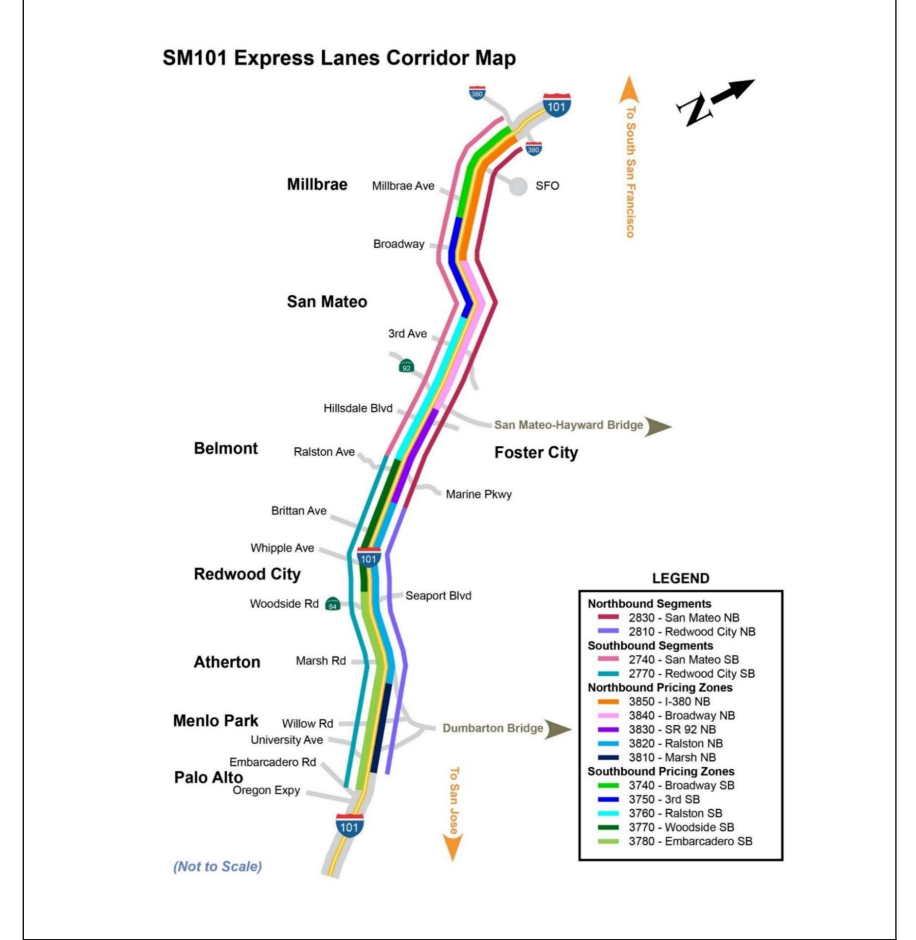
3840 - Broadway NB

3760 - Ralston SB

3880 - SR 92 NB

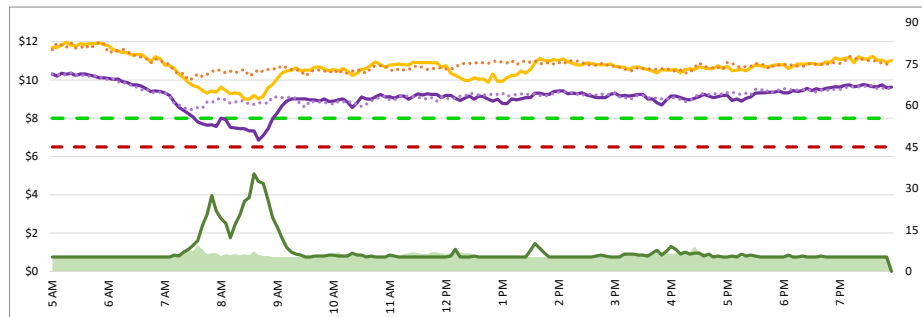


Map of SM101 Corridor (Not To Scale) DATA DATE: Week of 4/13 - 4/17



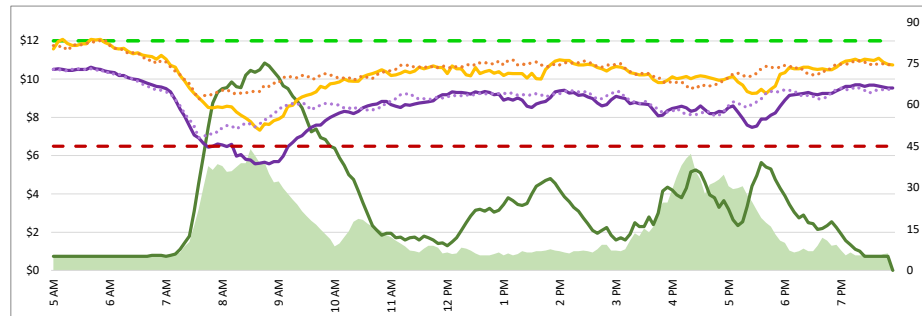
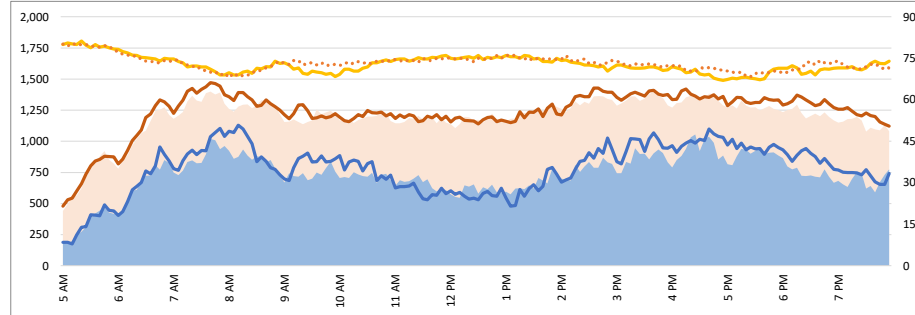
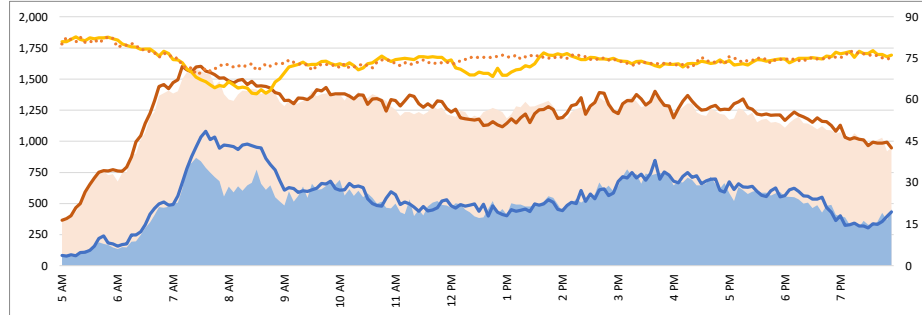
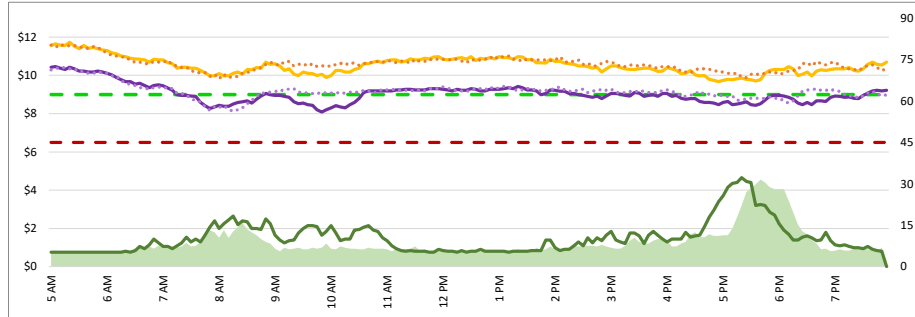
1. Lane Performance

Average Speeds, Volumes & Tolls - Current (Week of 4/13 - 4/17) vs Historic (Week of 4/6 - 4/10)



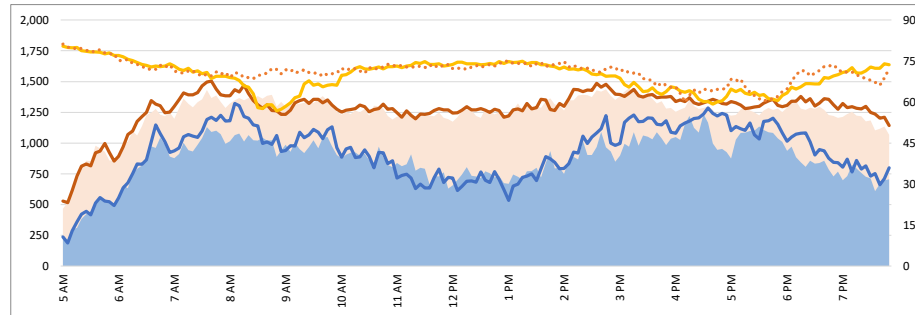
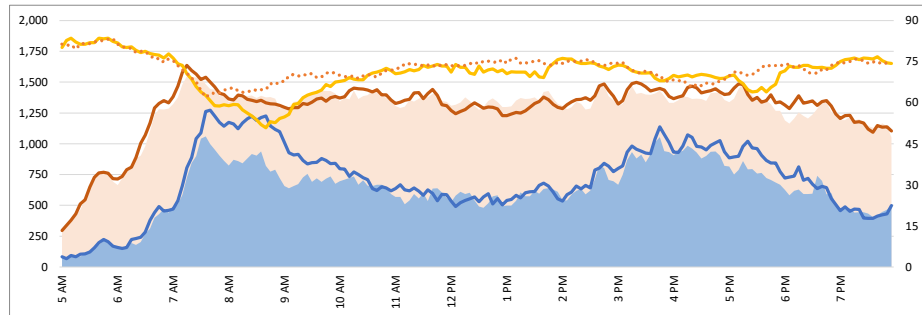
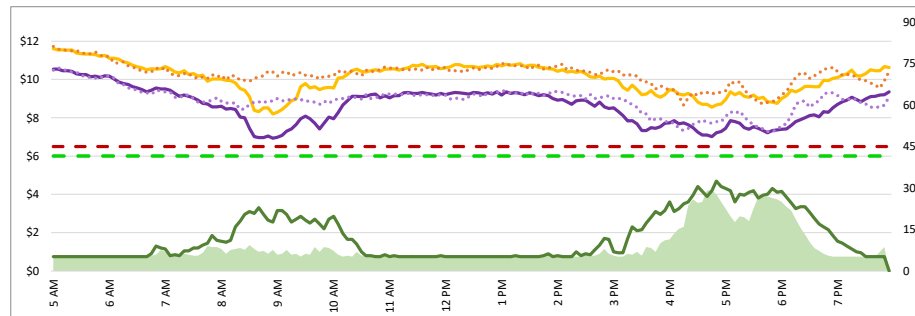
3770 - Woodside SB

3820 - Ralston NB



3780 - Embarcadero SB

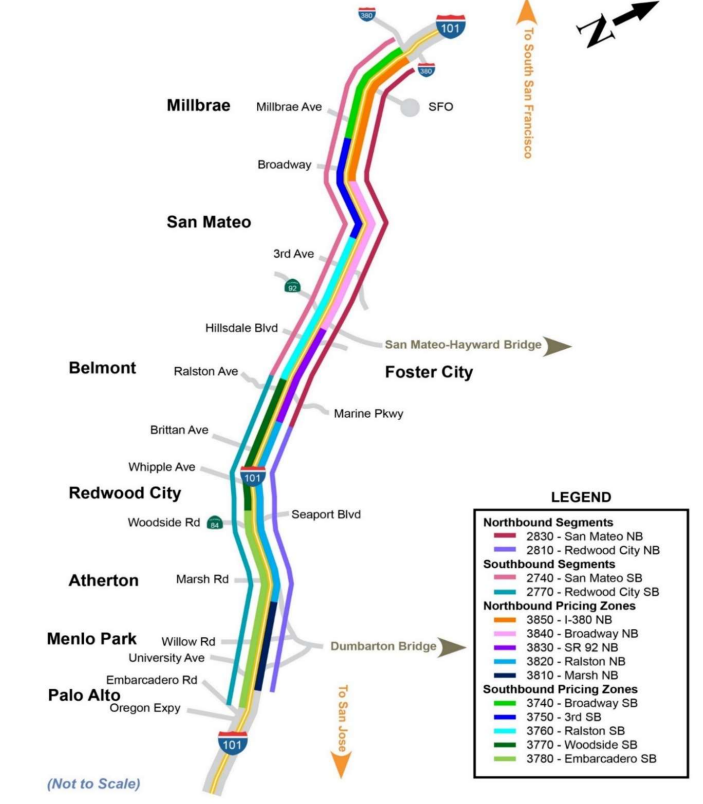
3810 - Marsh NB



DATA DATE: Week of 4/13 - 4/17

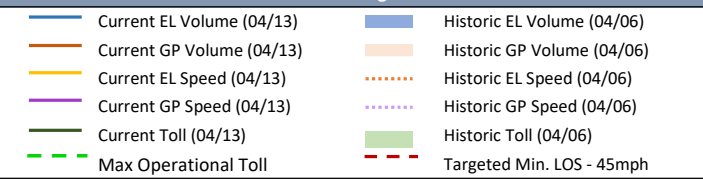
Map of SM101 Corridor (Not To Scale)

SM101 Express Lanes Corridor Map



(Not to Scale)

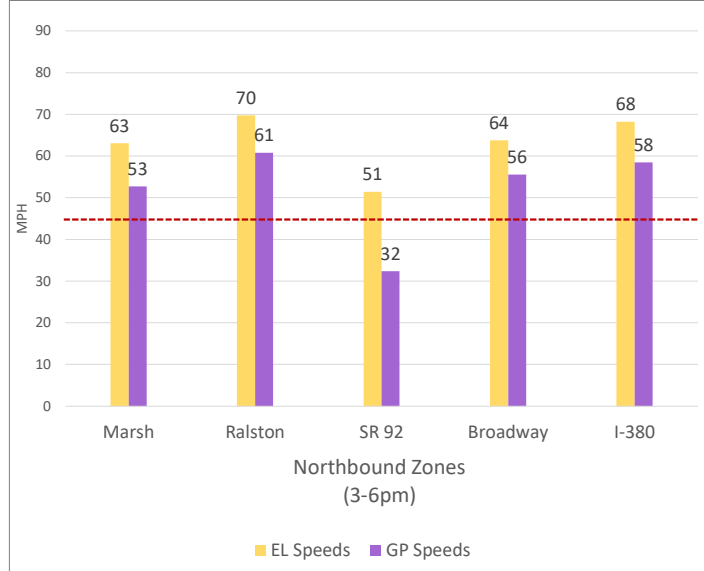
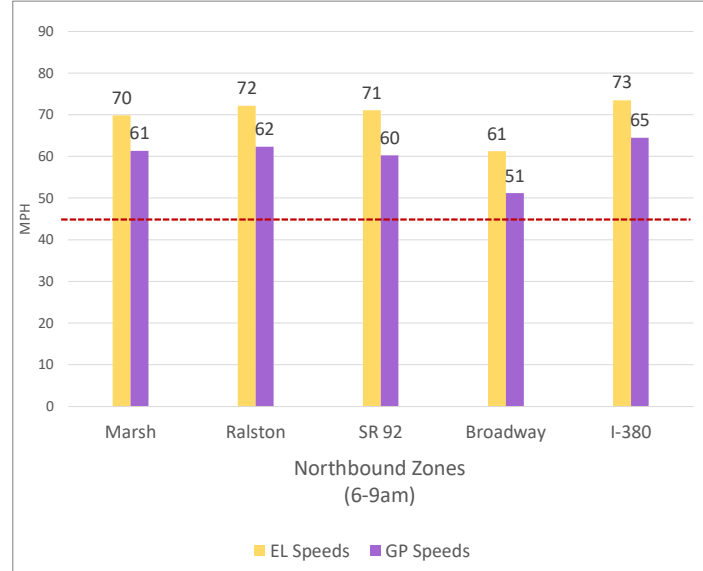
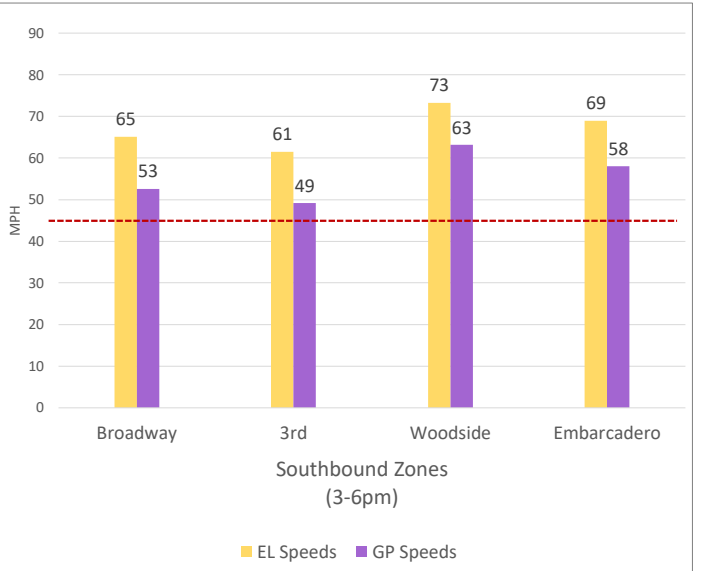
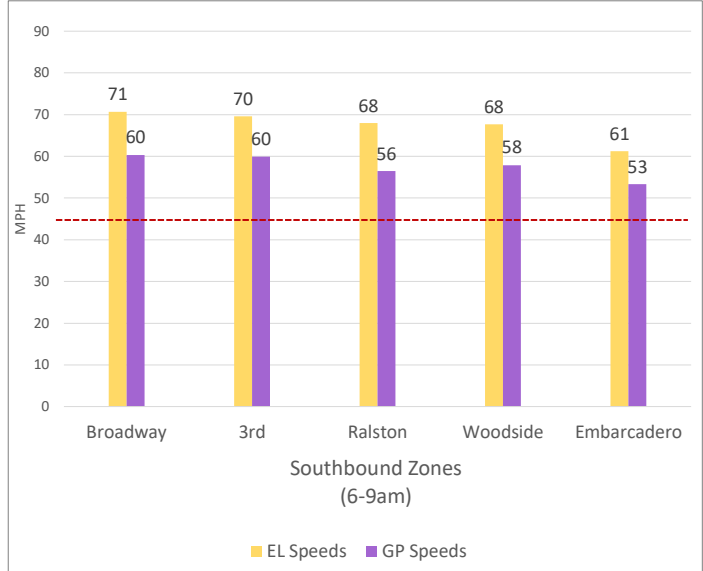
Chart Legend



2. Toll System Performance

DATA DATE: **Week of 4/13 - 4/17**

Speed Differential - Directional Peak Periods



--- Targeted Min. LOS - 45mph