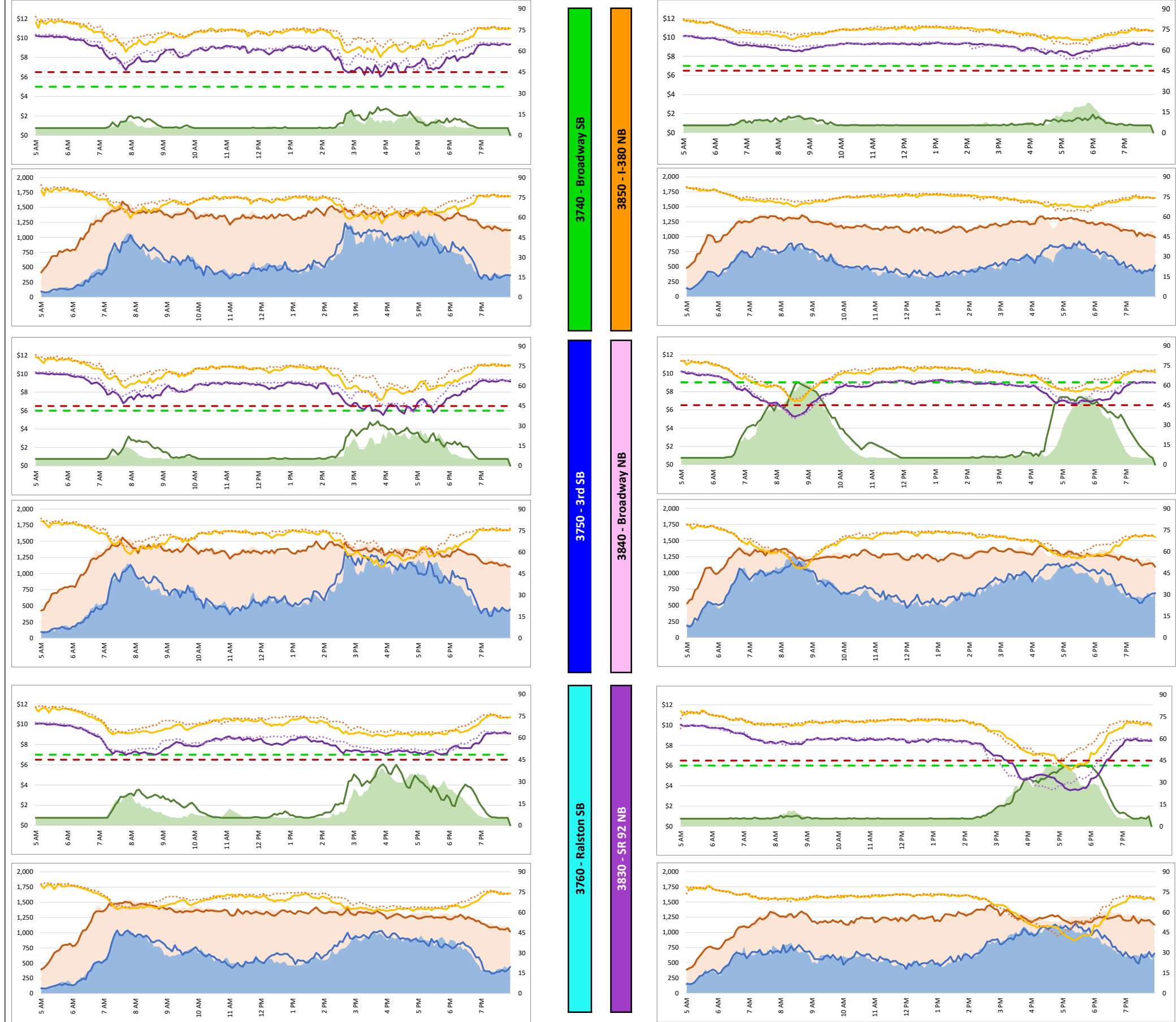


1. Lane Performance

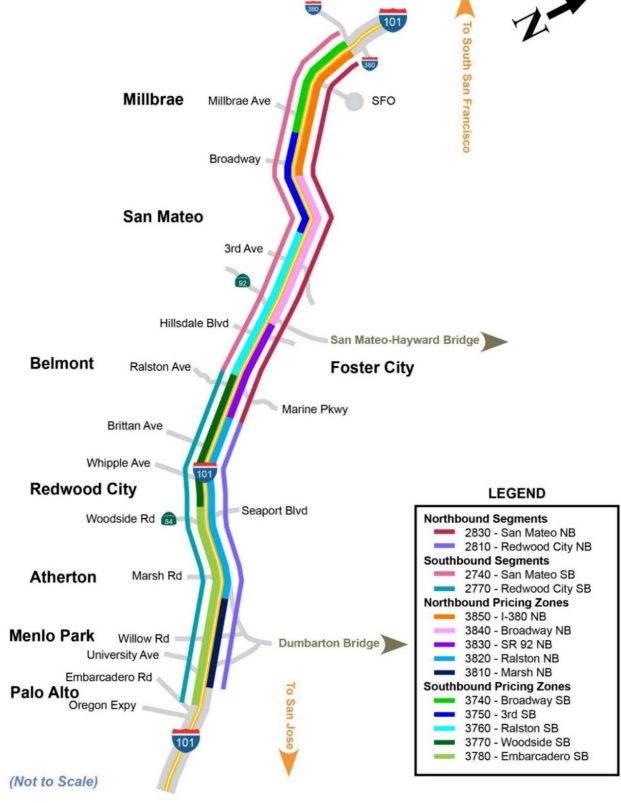
Average Speeds, Volumes & Tolls - Current (Week of 4/20 - 4/24) vs Historic (Week of 4/13 - 4/17)



DATA DATE: **Week of 4/20 - 4/24**

Map of SM101 Corridor (Not To Scale)

SM101 Express Lanes Corridor Map



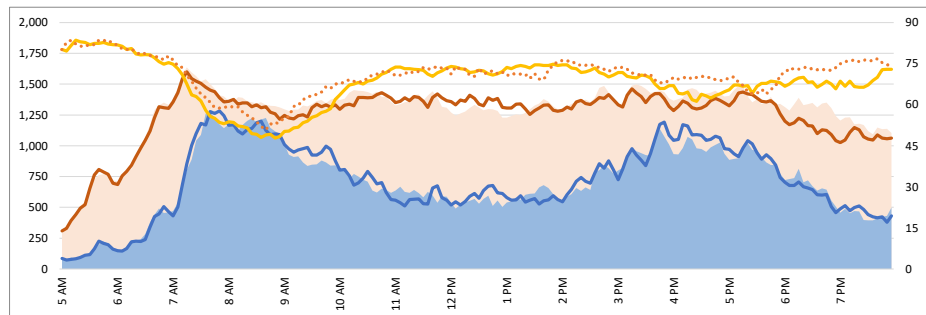
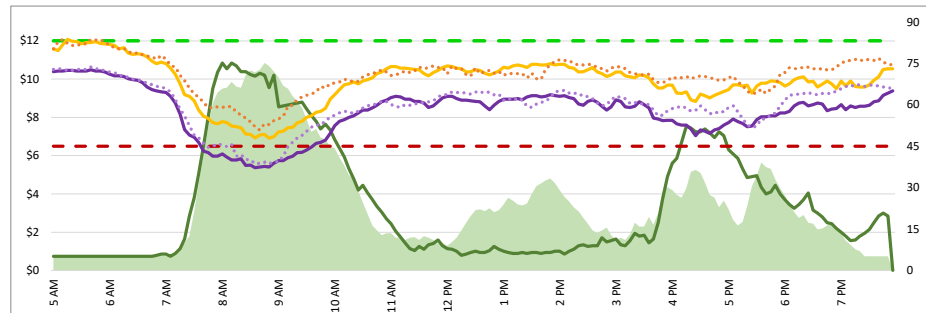
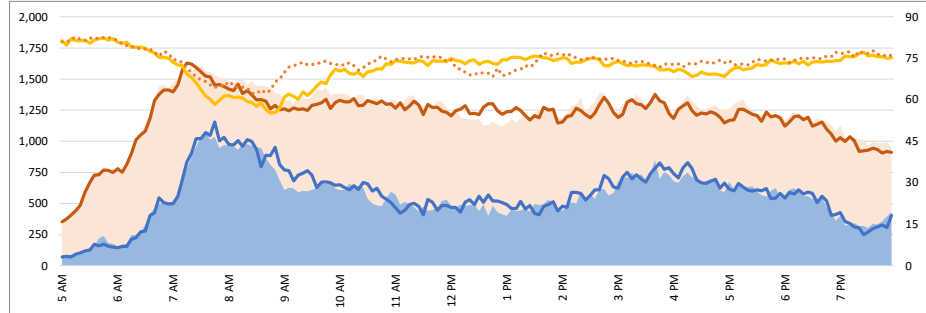
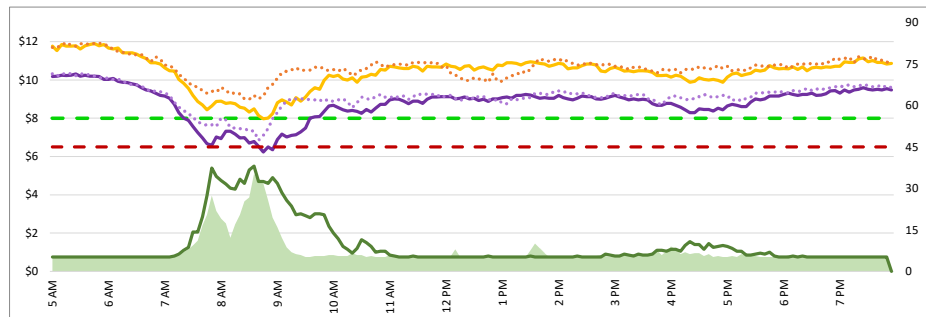
- LEGEND**
- Northbound Segments**
 - 2830 - San Mateo NB
 - 2810 - Redwood City NB
 - Southbound Segments**
 - 2740 - San Mateo SB
 - 2770 - Redwood City SB
 - Northbound Pricing Zones**
 - 3850 - I-380 NB
 - 3840 - Broadway NB
 - 3830 - SR 92 NB
 - 3820 - Ralston NB
 - 3810 - Marsh NB
 - Southbound Pricing Zones**
 - 3740 - Broadway SB
 - 3750 - 3rd SB
 - 3760 - Ralston SB
 - 3770 - Woodside SB
 - 3780 - Embarcadero SB

Chart Legend

- Current EL Volume (04/20)
- Current GP Volume (04/20)
- Current EL Speed (04/20)
- Current GP Speed (04/20)
- Current Toll (04/20)
- Max Operational Toll
- Historic EL Volume (04/13)
- Historic GP Volume (04/13)
- Historic EL Speed (04/13)
- Historic GP Speed (04/13)
- Historic Toll (04/13)
- Targeted Min. LOS - 45mph

1. Lane Performance

Average Speeds, Volumes & Tolls - Current (Week of 4/20 - 4/24) vs Historic (Week of 4/13 - 4/17)

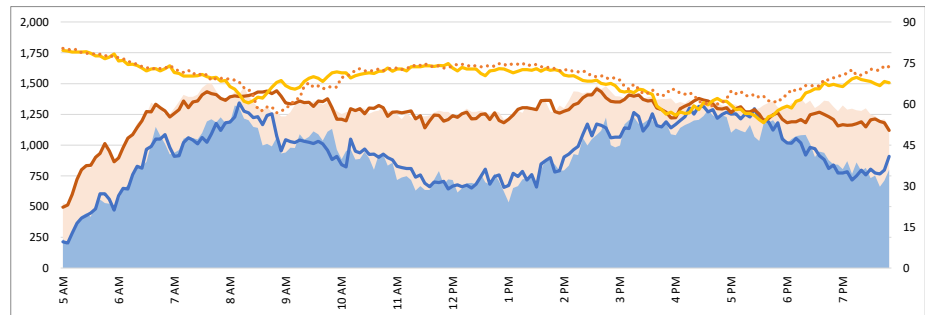
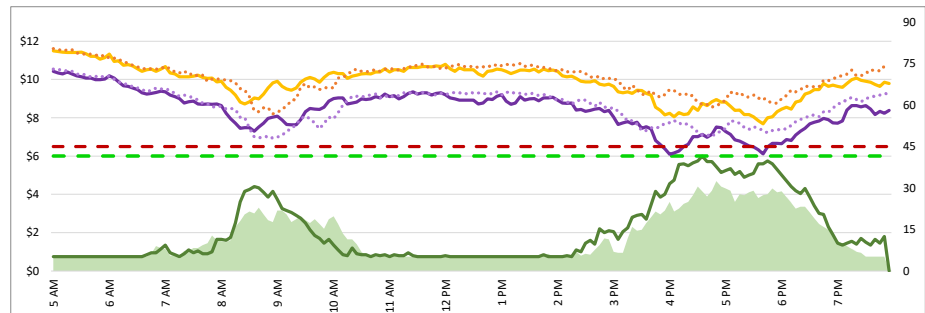
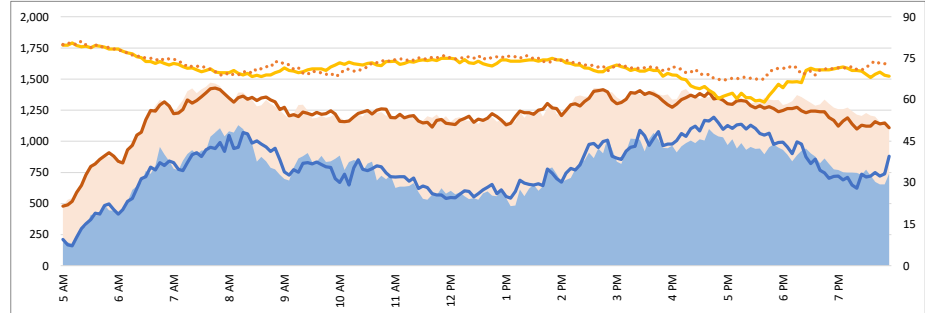
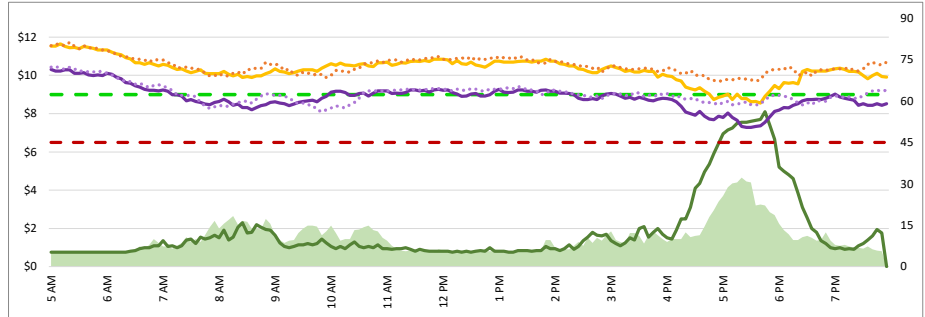


3770 - Woodside SB

3820 - Ralston NB

3780 - Embarcadero SB

3810 - Marsh NB



Map of SM101 Corridor (Not To Scale) DATA DATE: Week of 4/20 - 4/24

SM101 Express Lanes Corridor Map

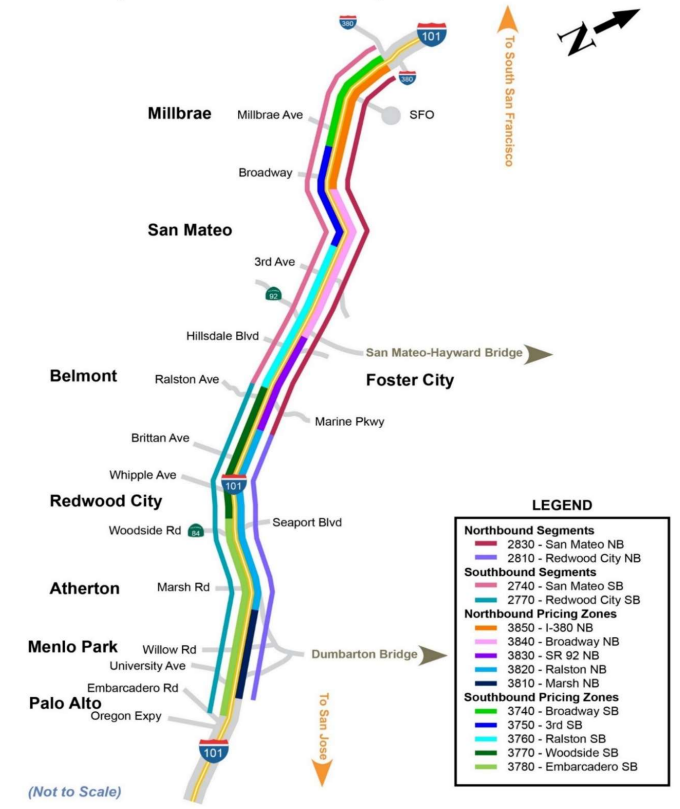
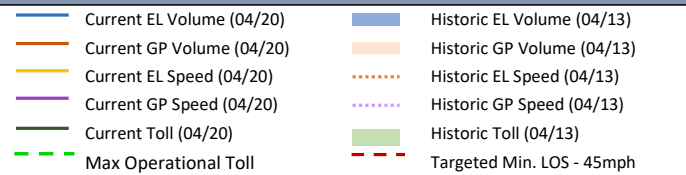


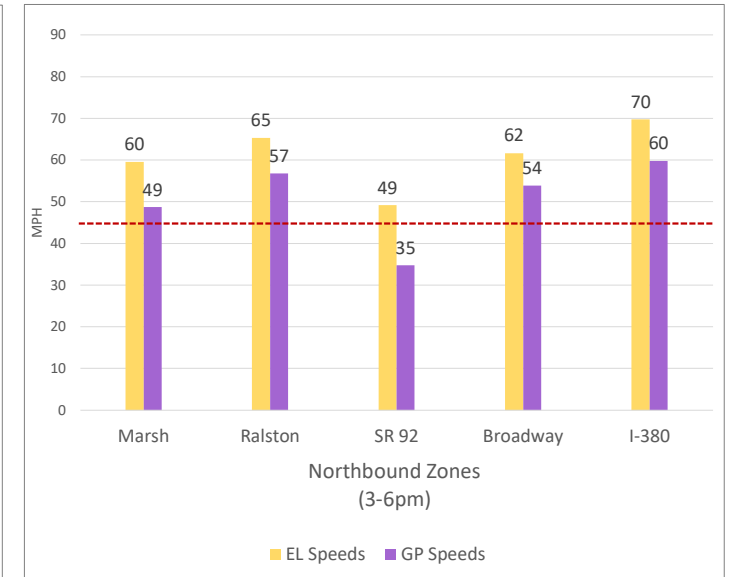
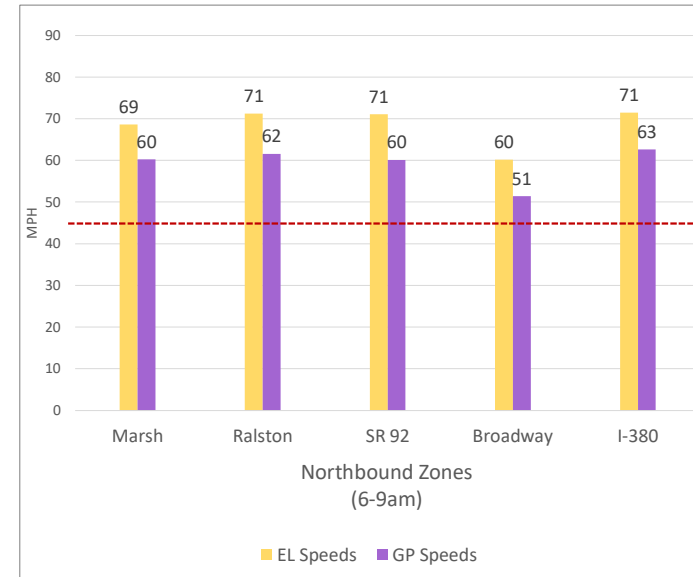
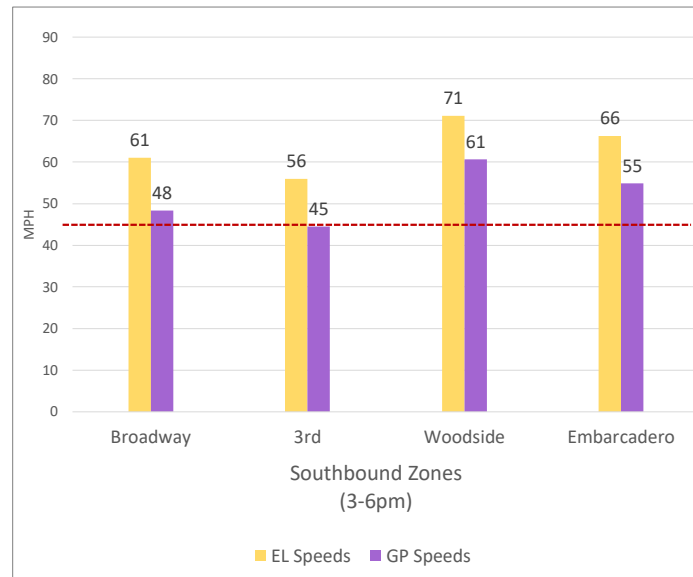
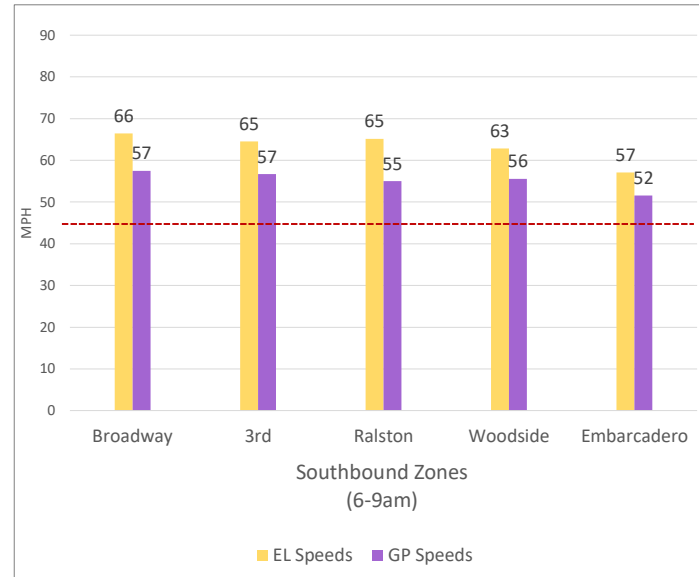
Chart Legend



2. Toll System Performance

DATA DATE: **Week of 4/20 - 4/24**

Speed Differential - Directional Peak Periods



--- Targeted Min. LOS - 45mph