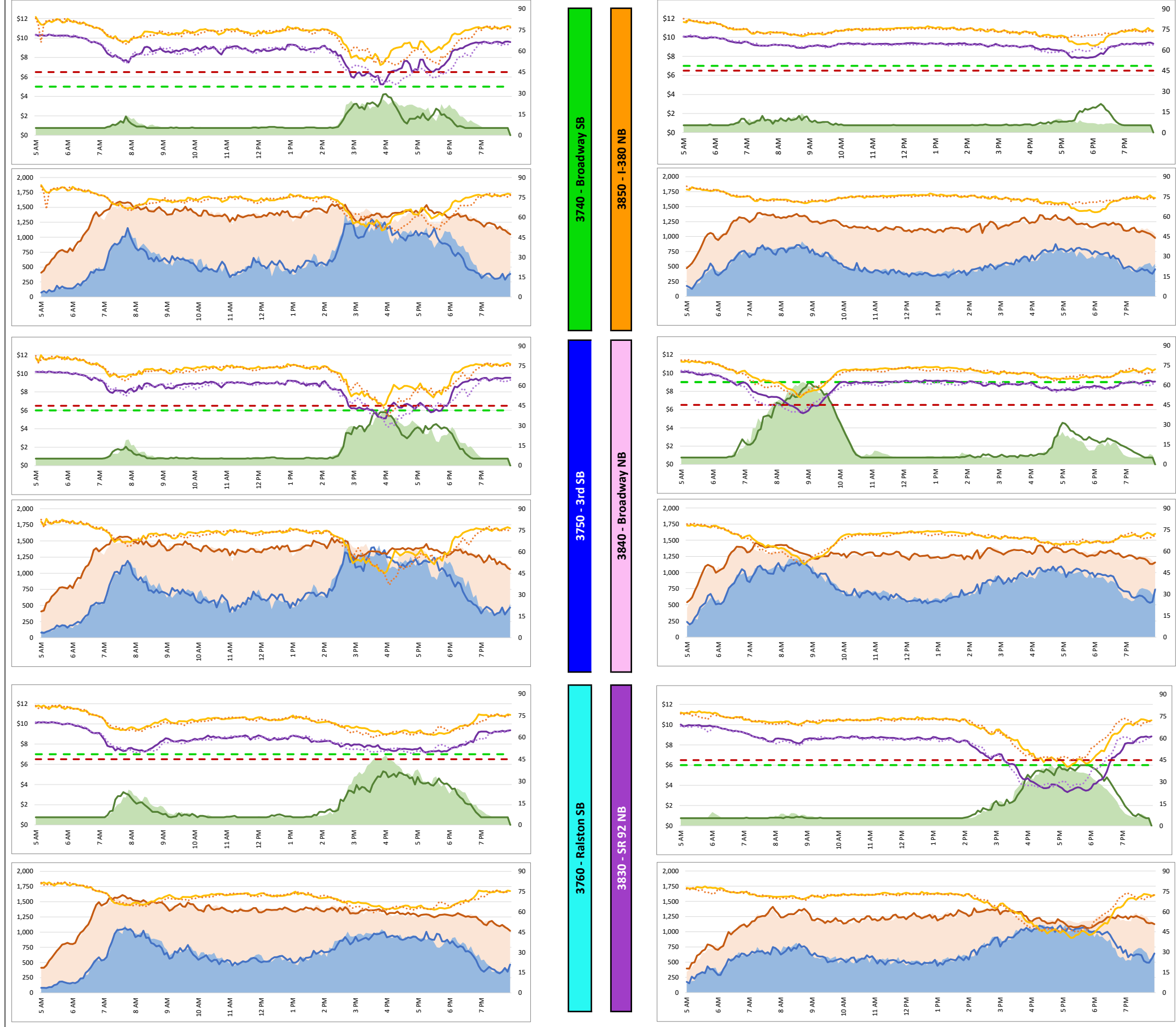
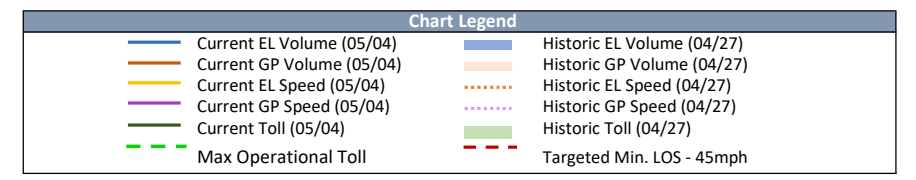
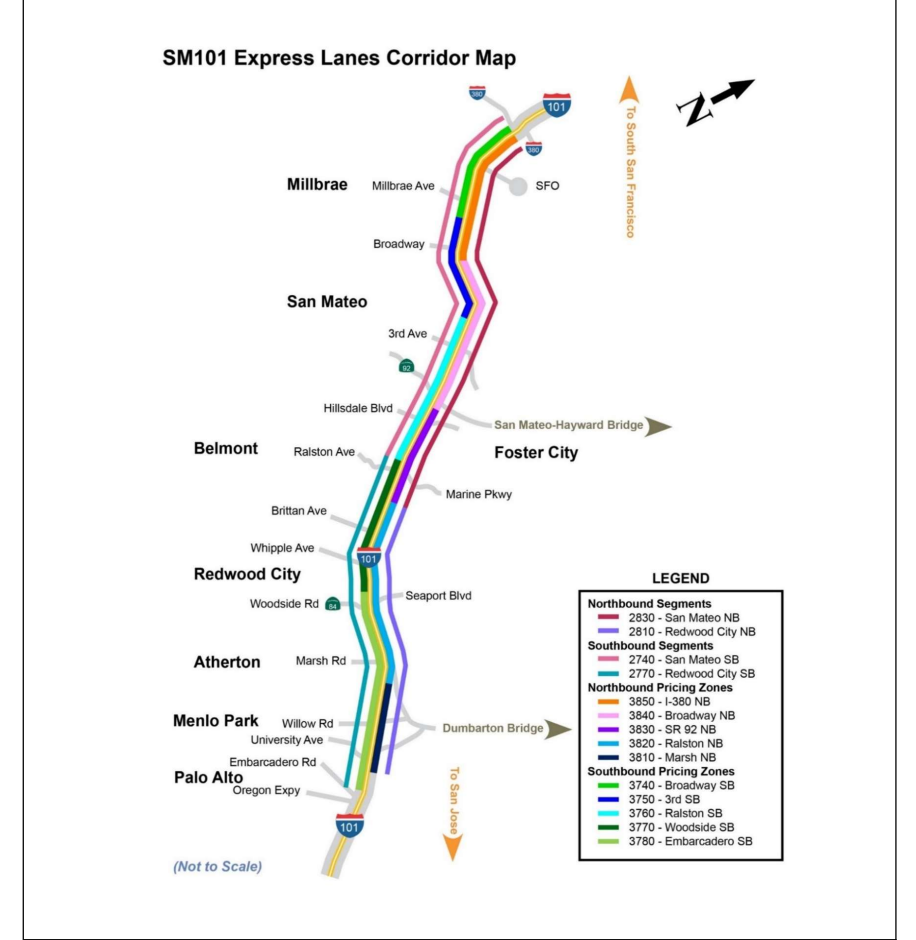


1. Lane Performance

Average Speeds, Volumes & Tolls - Current (Week of 5/4 - 5/8) vs Historic (Week of 4/27 - 5/1)

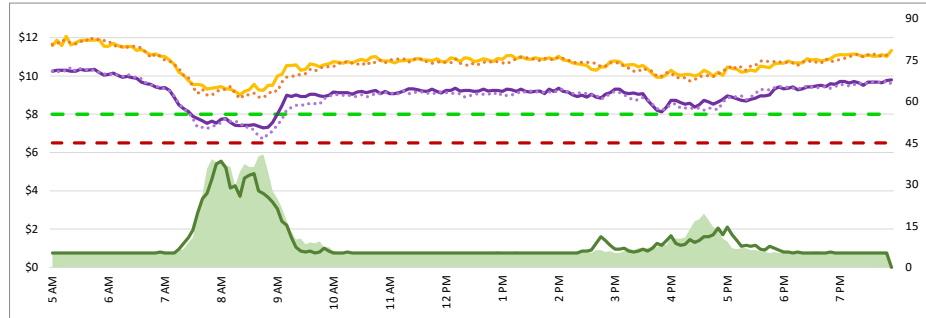


Map of SM101 Corridor (Not To Scale) DATA DATE: Week of 5/4 - 5/8



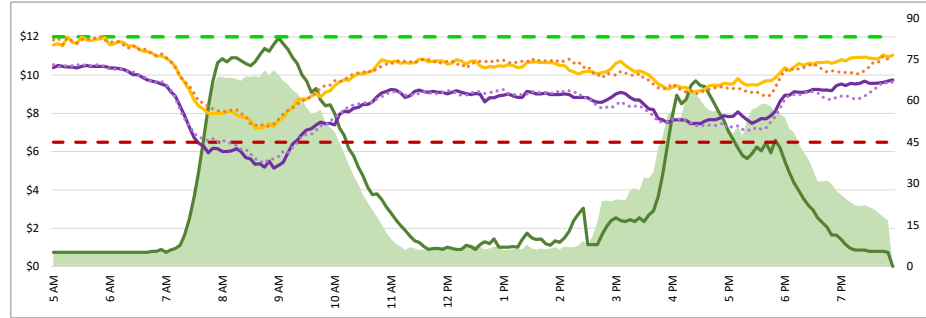
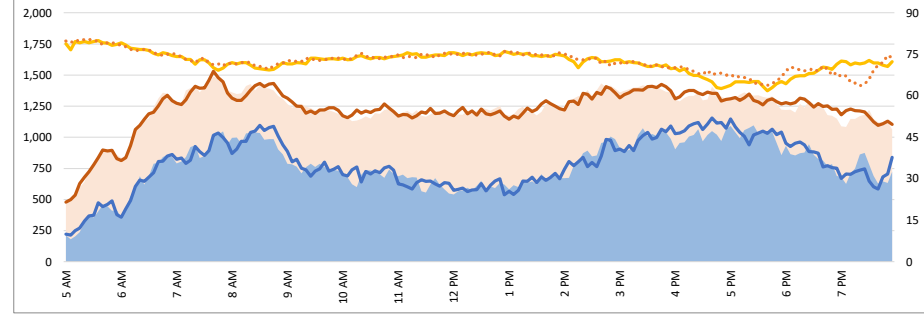
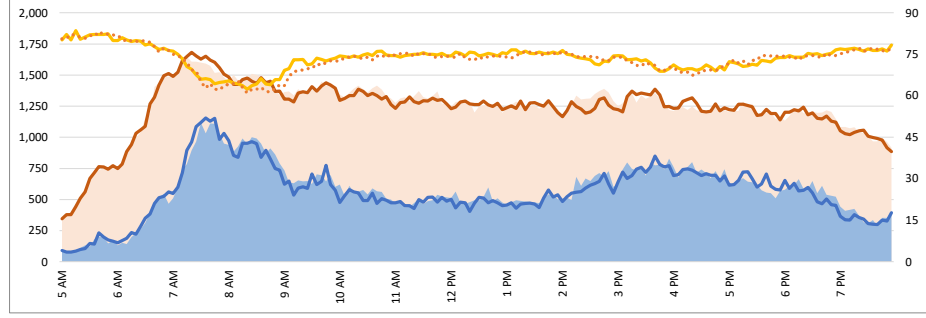
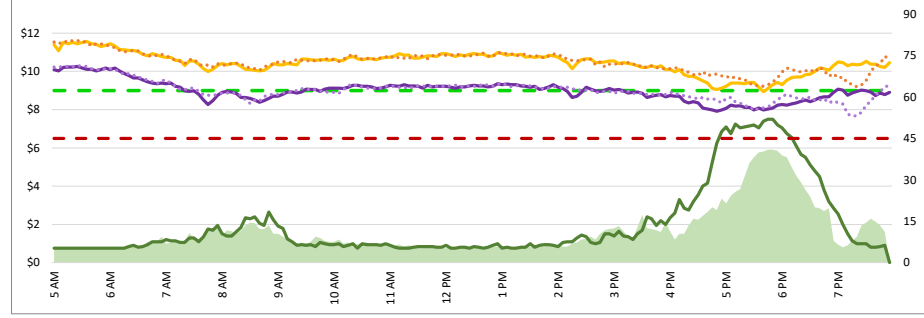
1. Lane Performance

Average Speeds, Volumes & Tolls - Current (Week of 5/4 - 5/8) vs Historic (Week of 4/27 - 5/1)



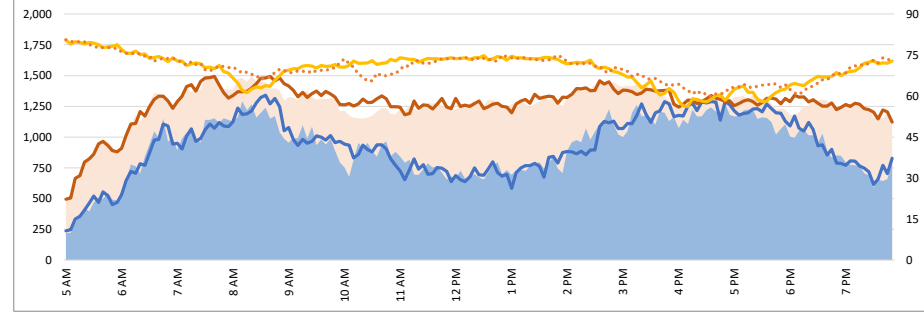
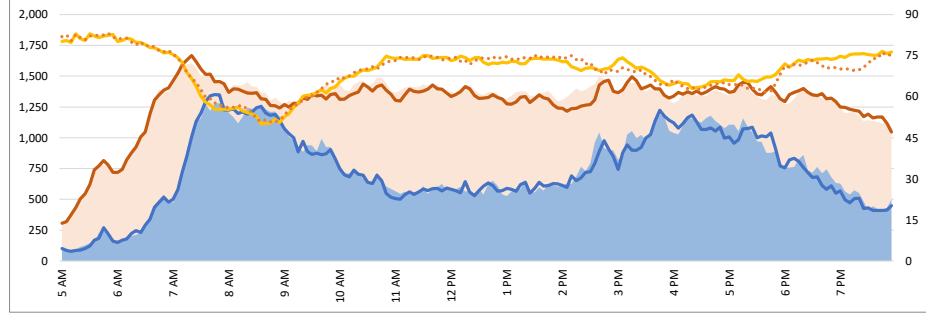
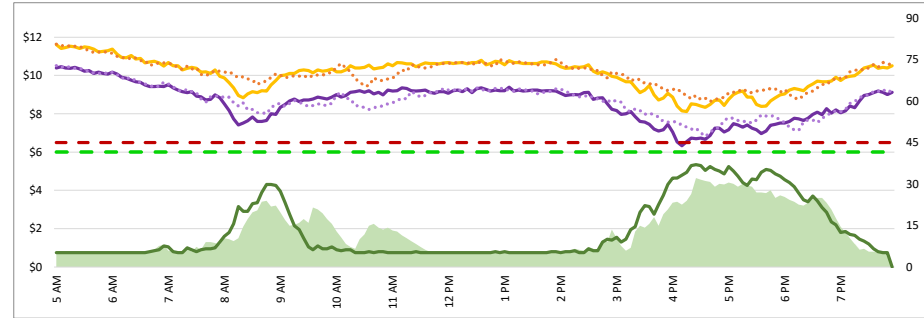
3770 - Woodside SB

3820 - Ralston NB



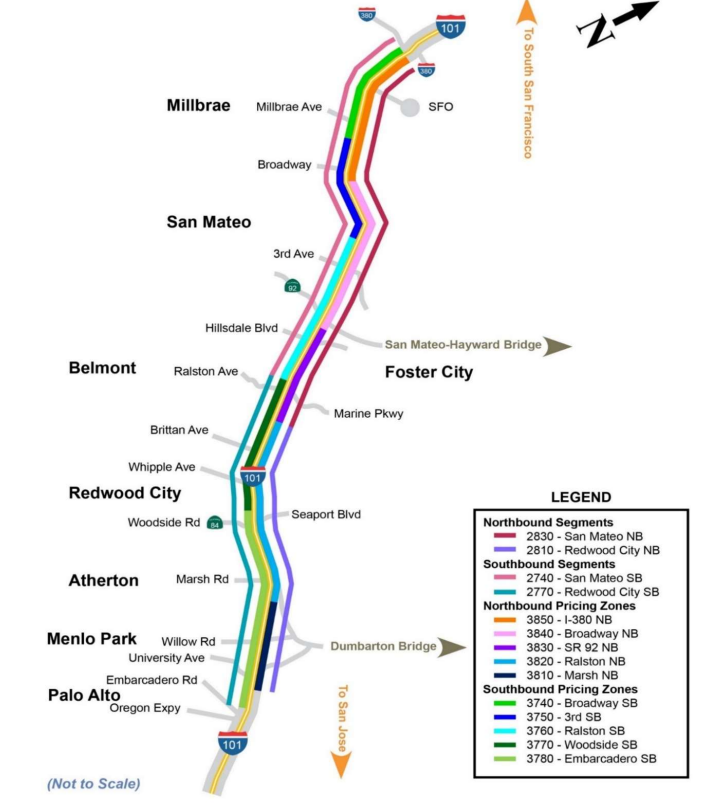
3780 - Embarcadero SB

3810 - Marsh NB



Map of SM101 Corridor (Not To Scale) DATA DATE: Week of 5/4 - 5/8

SM101 Express Lanes Corridor Map



LEGEND

- Northbound Segments**
 - 2830 - San Mateo NB
 - 2810 - Redwood City NB
- Southbound Segments**
 - 2740 - San Mateo SB
 - 2770 - Redwood City SB
- Northbound Pricing Zones**
 - 3850 - I-380 NB
 - 3840 - Broadway NB
 - 3830 - SR 92 NB
 - 3820 - Ralston NB
 - 3810 - Marsh NB
- Southbound Pricing Zones**
 - 3740 - Broadway SB
 - 3750 - 3rd SB
 - 3780 - Ralston SB
 - 3770 - Woodside SB
 - 3780 - Embarcadero SB

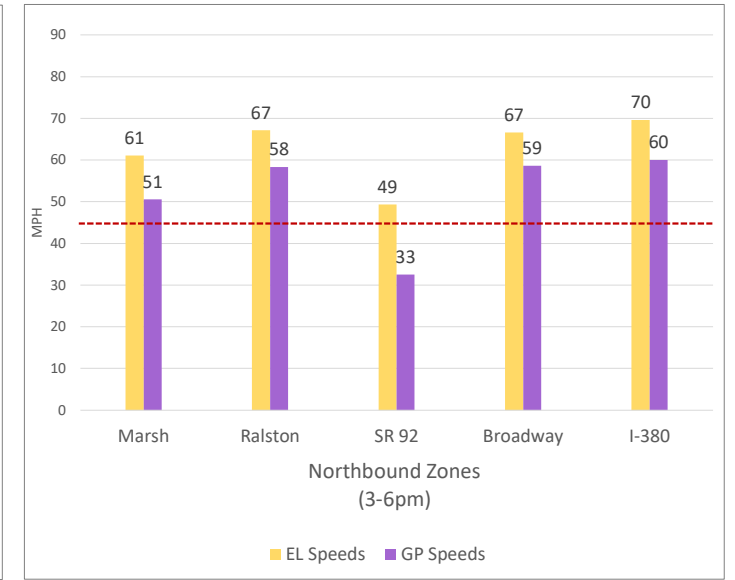
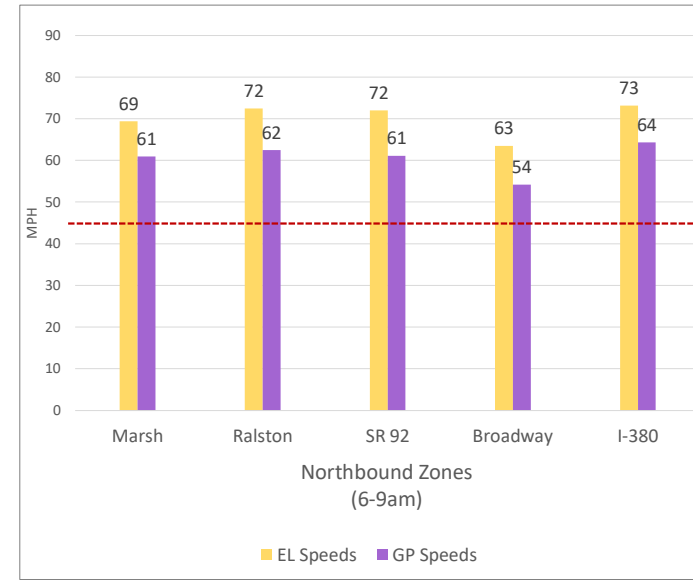
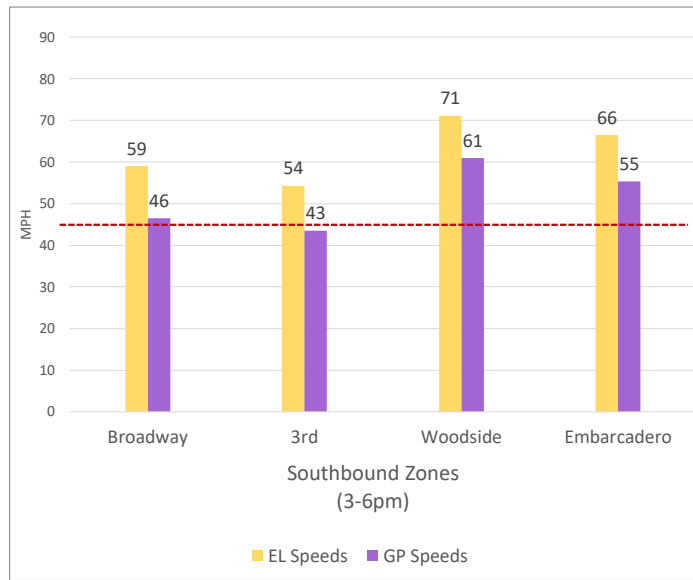
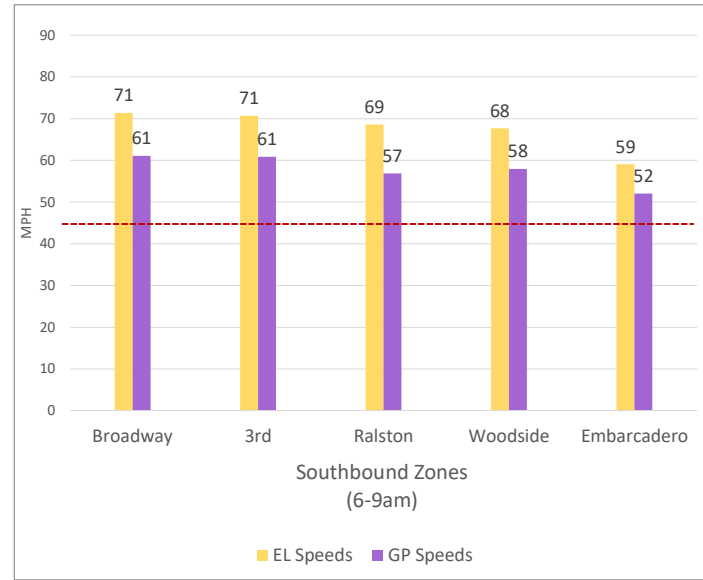
Chart Legend

- Current EL Volume (05/04)
- Current GP Volume (05/04)
- Current EL Speed (05/04)
- Current GP Speed (05/04)
- Current Toll (05/04)
- Max Operational Toll
- Historic EL Volume (04/27)
- Historic GP Volume (04/27)
- Historic EL Speed (04/27)
- Historic GP Speed (04/27)
- Historic Toll (04/27)
- Targeted Min. LOS - 45mph

2. Toll System Performance

DATA DATE: **Week of 5/4 - 5/8**

Speed Differential - Directional Peak Periods



--- Targeted Min. LOS - 45mph