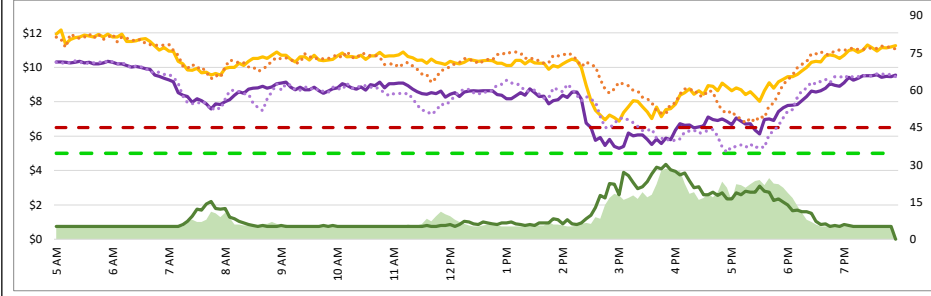


1. Lane Performance

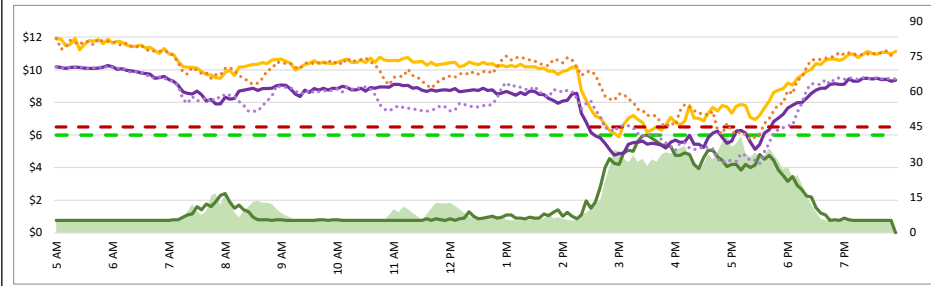
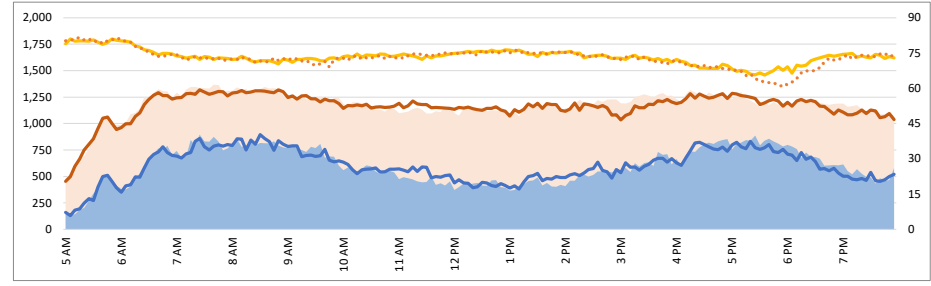
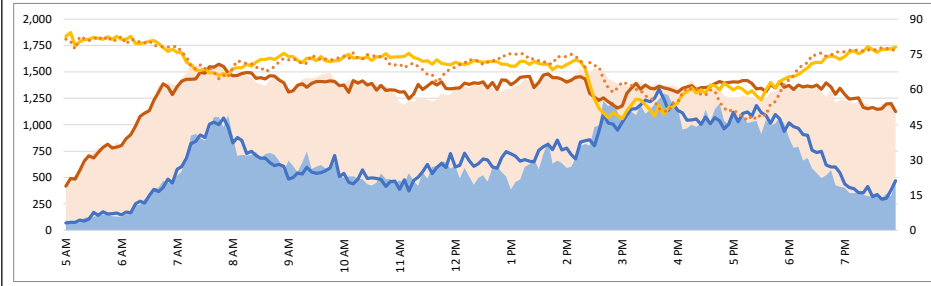
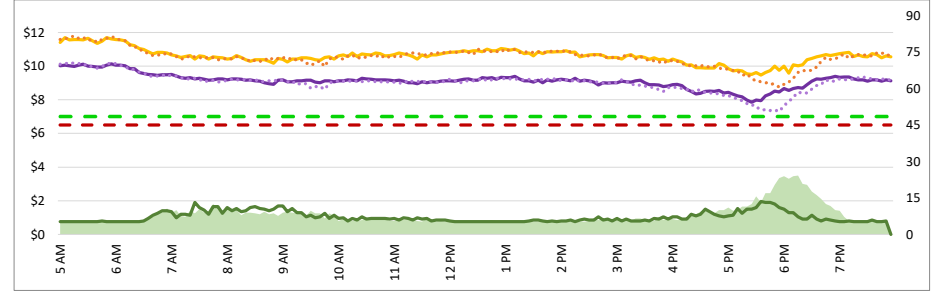
Average Speeds, Volumes & Tolls - Current (Week of 5/18 - 5/22) vs Historic (Week of 5/11 - 5/15)

DATA DATE: **Week of 5/18 - 5/22**



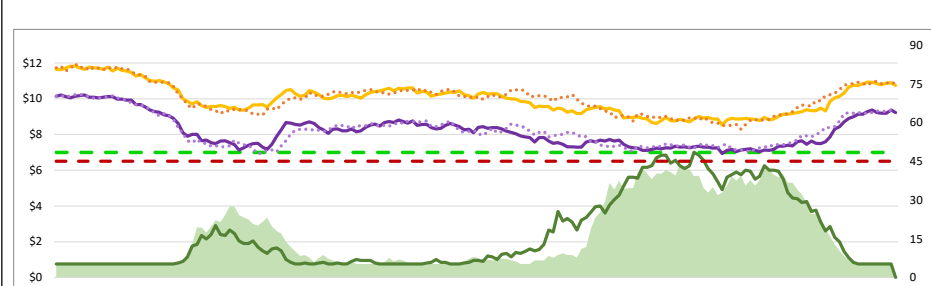
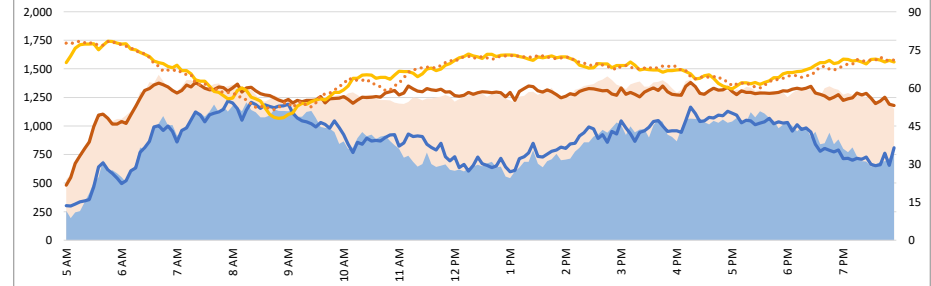
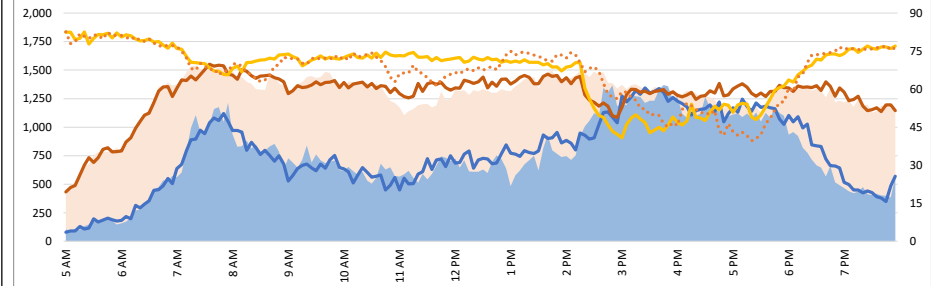
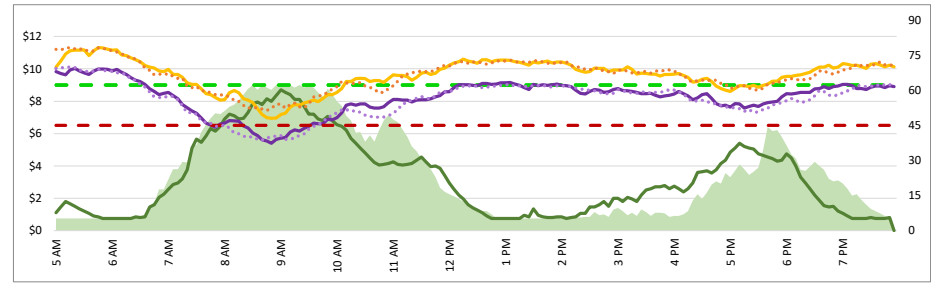
3740 - Broadway SB

3850 - I-380 NB



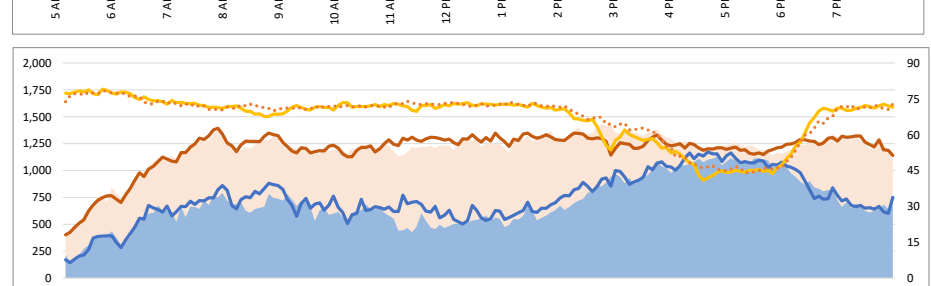
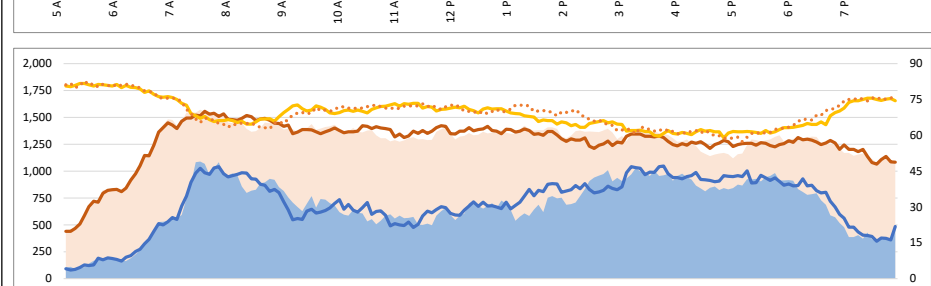
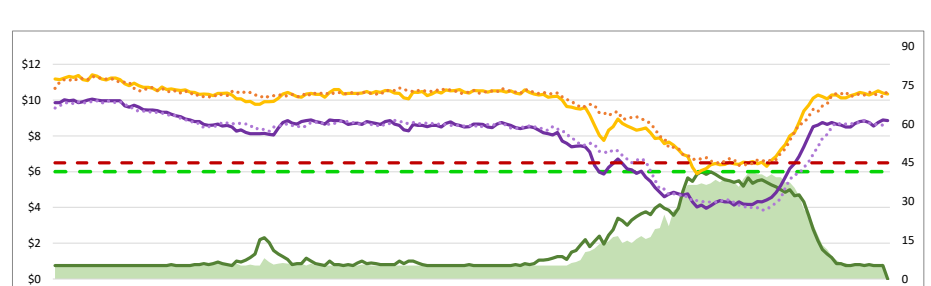
3750 - 3rd SB

3840 - Broadway NB



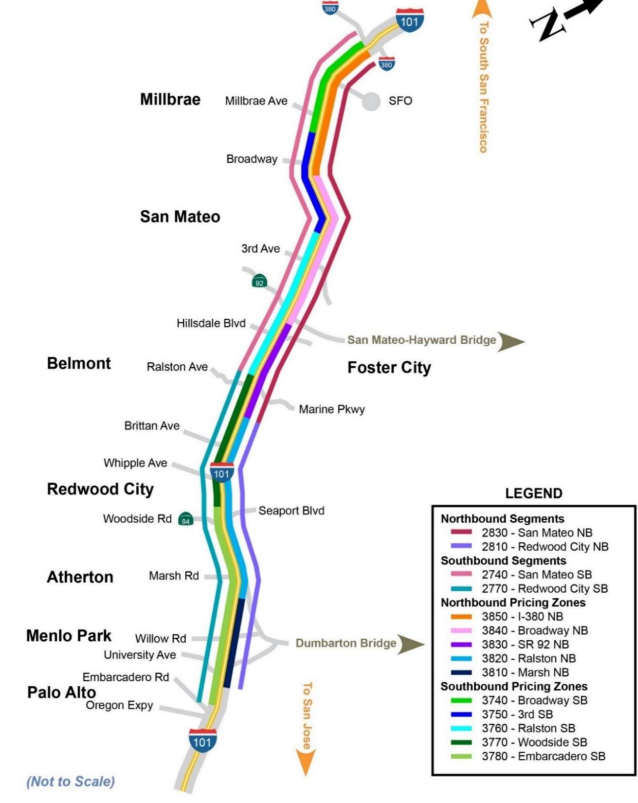
3760 - Ralston SB

3830 - SR 92 NB



Map of SM101 Corridor (Not To Scale)

SM101 Express Lanes Corridor Map



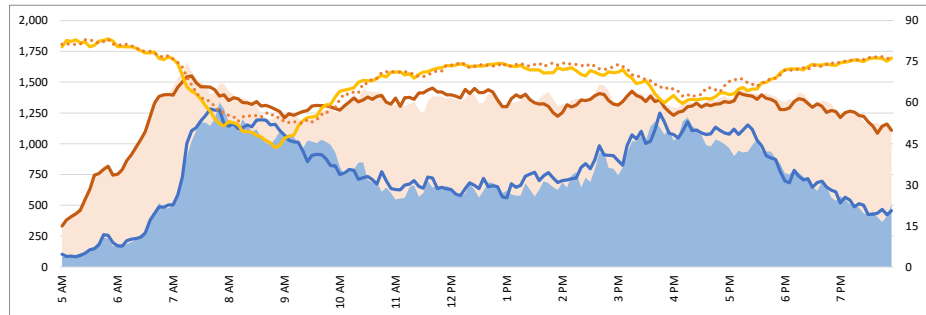
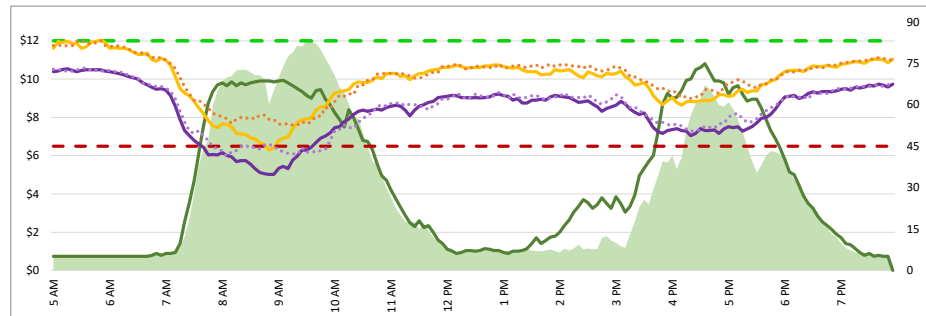
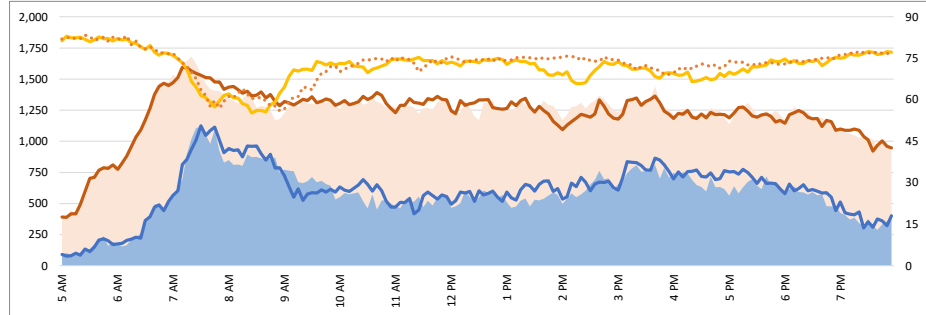
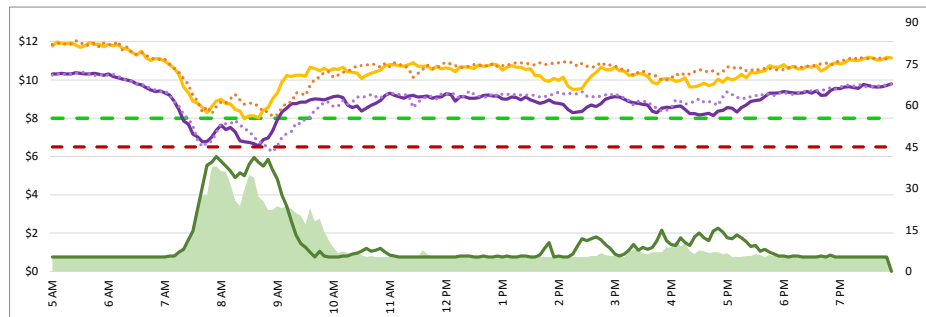
- LEGEND**
- Northbound Segments**
    - 2830 - San Mateo NB
    - 2810 - Redwood City NB
  - Southbound Segments**
    - 2740 - San Mateo SB
    - 2770 - Redwood City SB
  - Northbound Pricing Zones**
    - 3850 - I-380 NB
    - 3840 - Broadway NB
    - 3830 - SR 92 NB
    - 3820 - Ralston NB
    - 3810 - Marsh NB
  - Southbound Pricing Zones**
    - 3740 - Broadway SB
    - 3750 - 3rd SB
    - 3760 - Ralston SB
    - 3770 - Woodside SB
    - 3780 - Embarcadero SB

Chart Legend

- Current EL Volume (05/18)
- Current GP Volume (05/18)
- Current EL Speed (05/18)
- Current GP Speed (05/18)
- Current Toll (05/18)
- Max Operational Toll
- Historic EL Volume (05/11)
- Historic GP Volume (05/11)
- Historic EL Speed (05/11)
- Historic GP Speed (05/11)
- Historic Toll (05/11)
- Targeted Min. LOS - 45mph

1. Lane Performance

Average Speeds, Volumes & Tolls - Current (Week of 5/18 - 5/22) vs Historic (Week of 5/11 - 5/15)

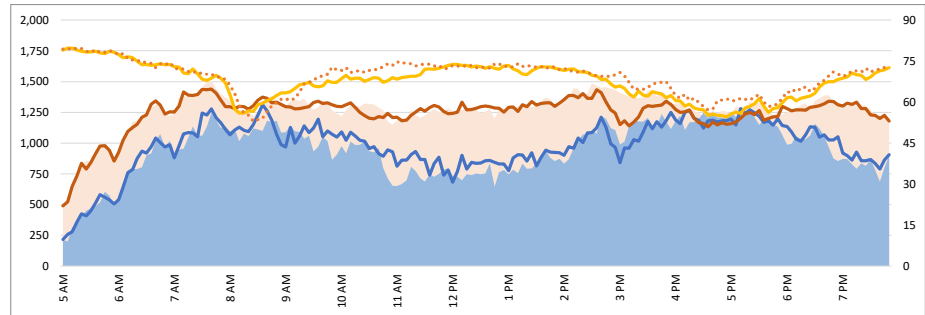
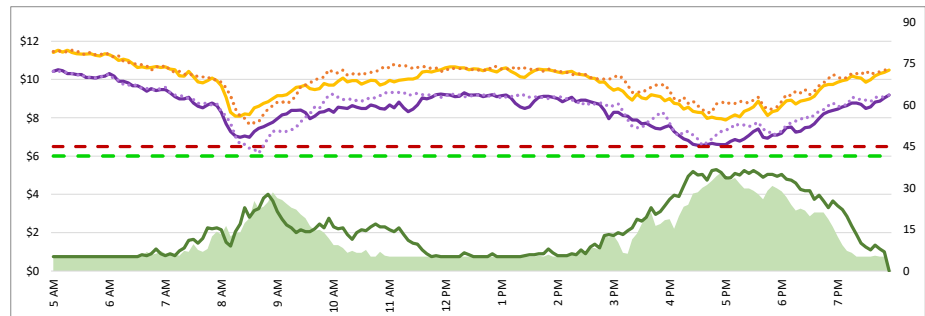
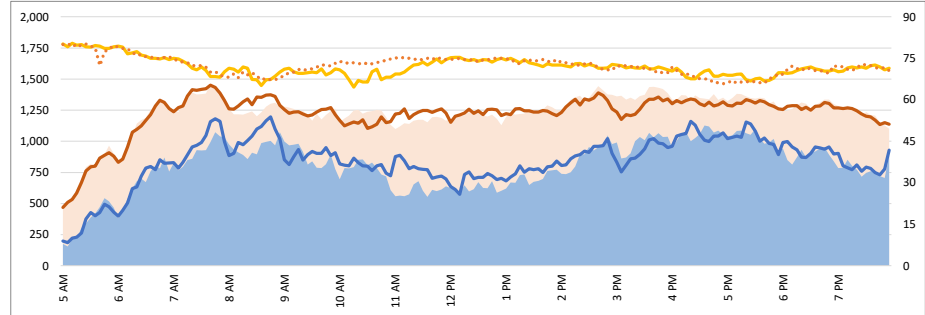
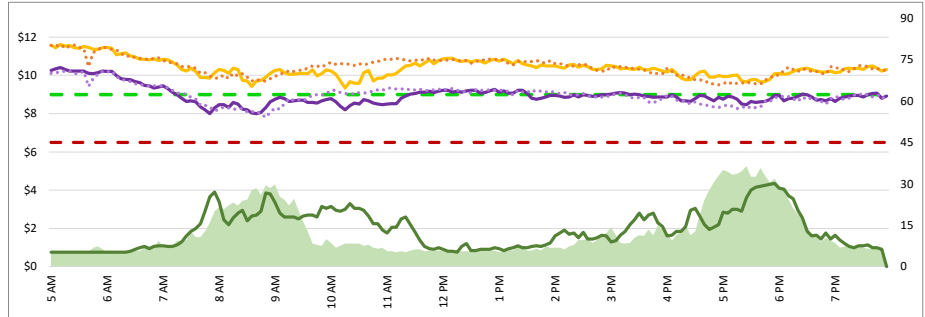


3770 - Woodside SB

3820 - Ralston NB

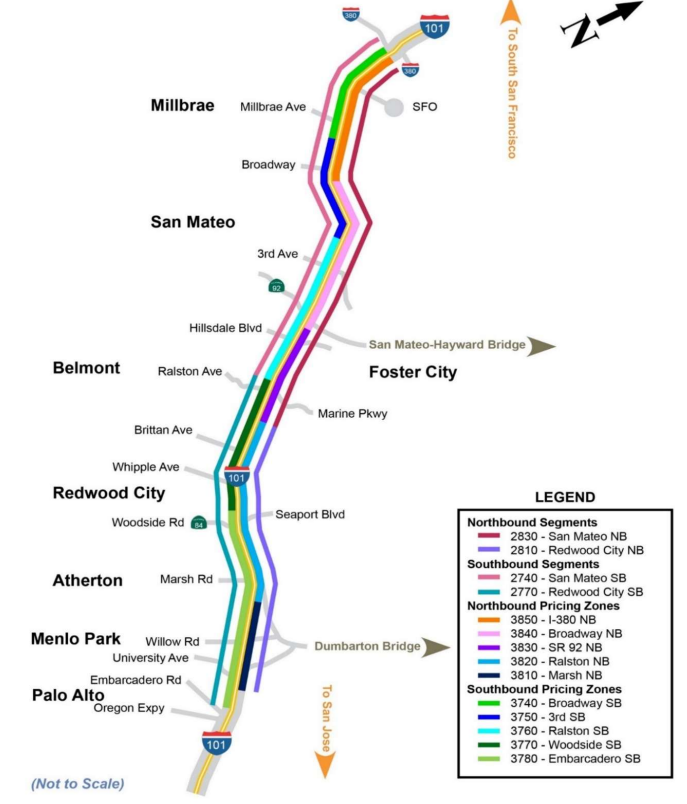
3780 - Embarcadero SB

3810 - Marsh NB



Map of SM101 Corridor (Not To Scale) DATA DATE: Week of 5/18 - 5/22

SM101 Express Lanes Corridor Map



**LEGEND**

- Northbound Segments**
  - 2830 - San Mateo NB
  - 2810 - Redwood City NB
- Southbound Segments**
  - 2740 - San Mateo SB
  - 2770 - Redwood City SB
- Northbound Pricing Zones**
  - 3850 - I-380 NB
  - 3840 - Broadway NB
  - 3830 - SR 92 NB
  - 3820 - Ralston NB
  - 3810 - Marsh NB
- Southbound Pricing Zones**
  - 3740 - Broadway SB
  - 3750 - 3rd SB
  - 3780 - Ralston SB
  - 3770 - Woodside SB
  - 3780 - Embarcadero SB

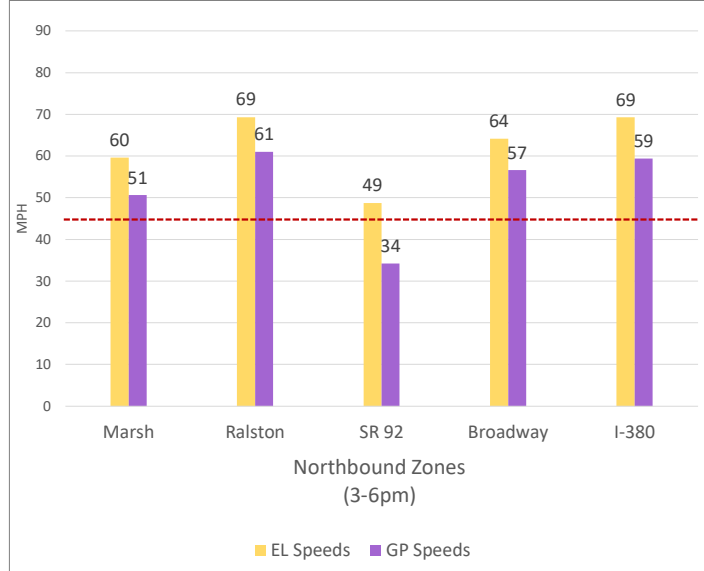
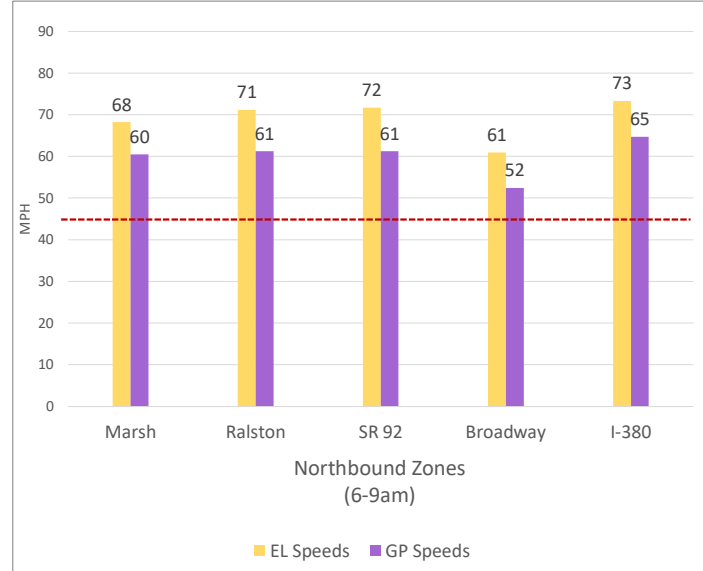
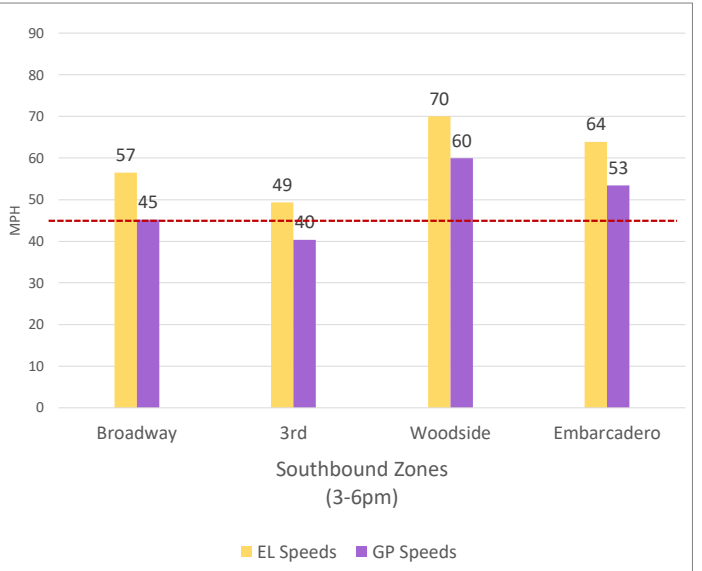
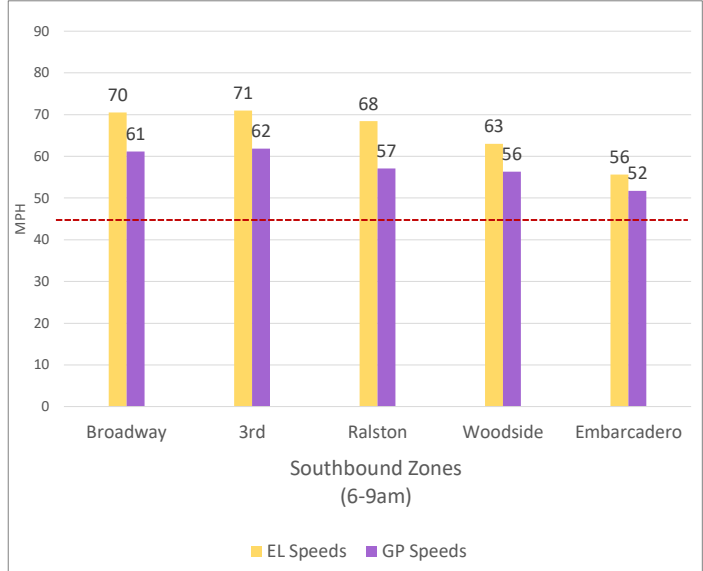
**Chart Legend**

- Current EL Volume (05/18)
- Current GP Volume (05/18)
- Current EL Speed (05/18)
- Current GP Speed (05/18)
- Current Toll (05/18)
- Max Operational Toll
- Historic EL Volume (05/11)
- Historic GP Volume (05/11)
- Historic EL Speed (05/11)
- Historic GP Speed (05/11)
- Historic Toll (05/11)
- Targeted Min. LOS - 45mph

2. Toll System Performance

DATA DATE: **Week of 5/18 - 5/22**

Speed Differential - Directional Peak Periods



--- Targeted Min. LOS - 45mph