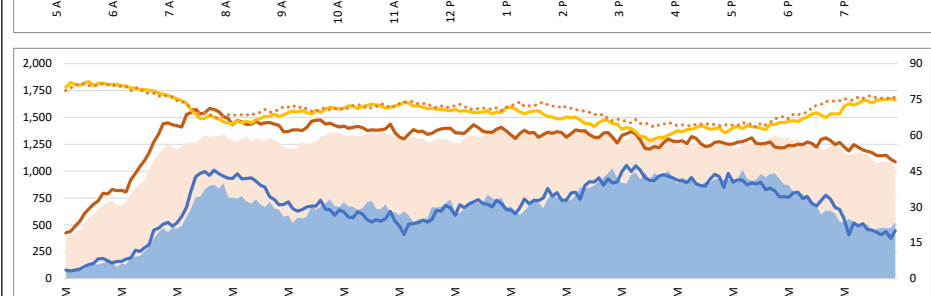
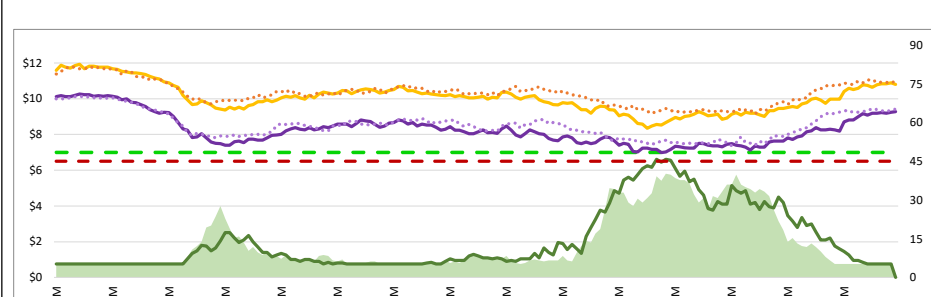
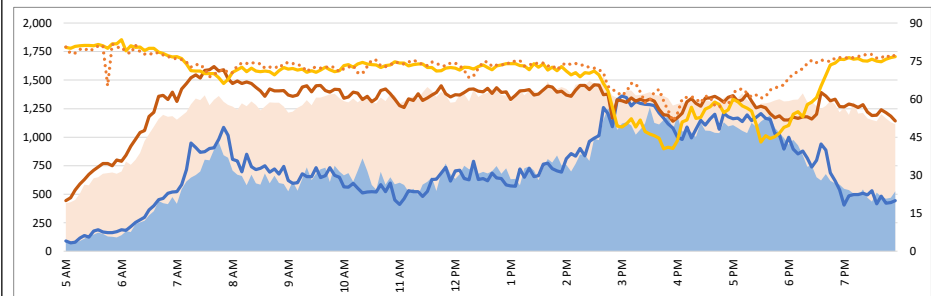
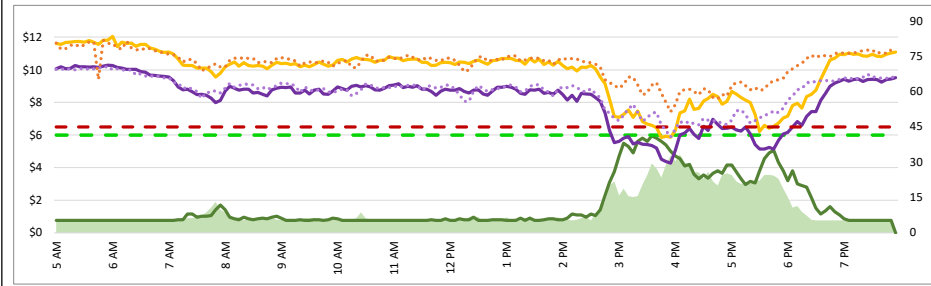
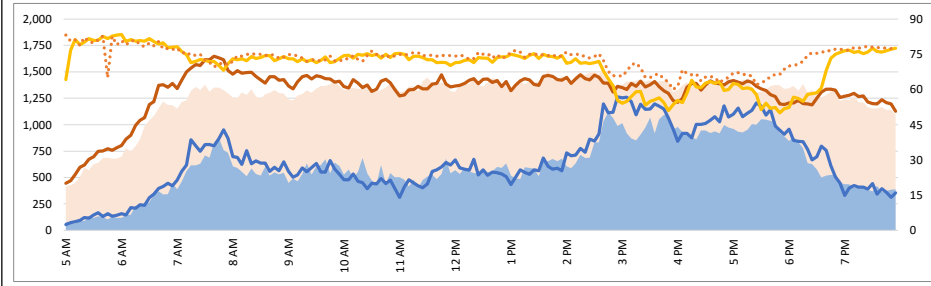
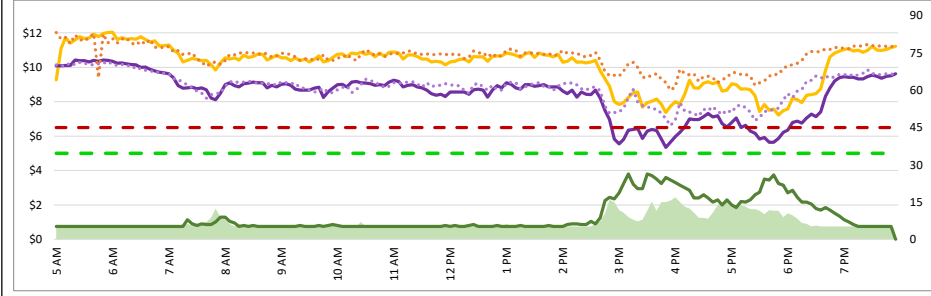


1. Lane Performance

Average Speeds, Volumes & Tolls - Current (Week of 6/1 - 6/5) vs Historic (Week of 5/25 - 5/29)

DATA DATE: Week of 6/1 - 6/5



3740 - Broadway SB

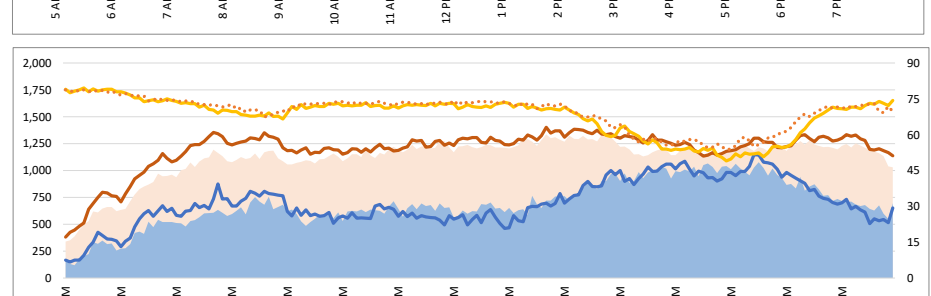
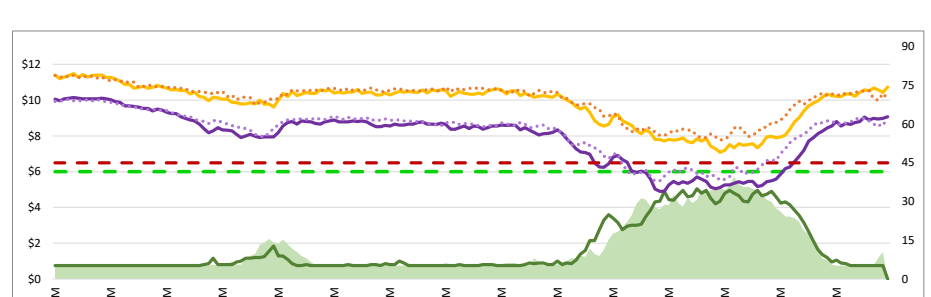
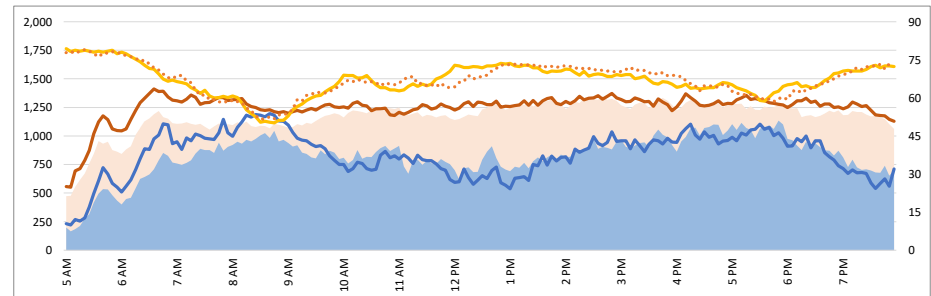
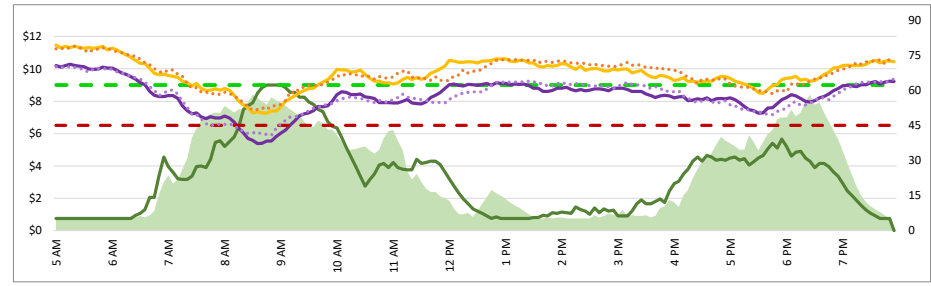
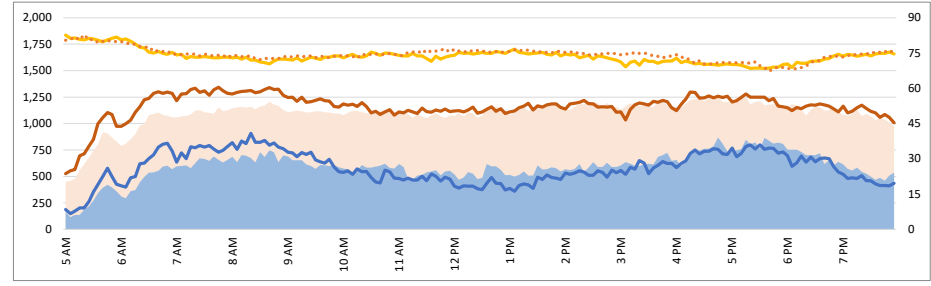
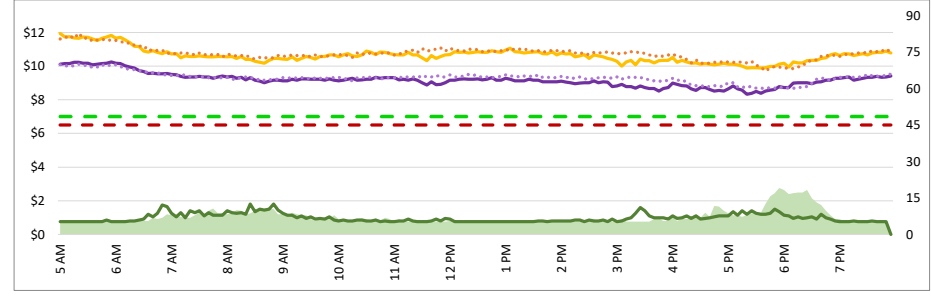
3850 - I-380 NB

3750 - 3rd SB

3840 - Broadway NB

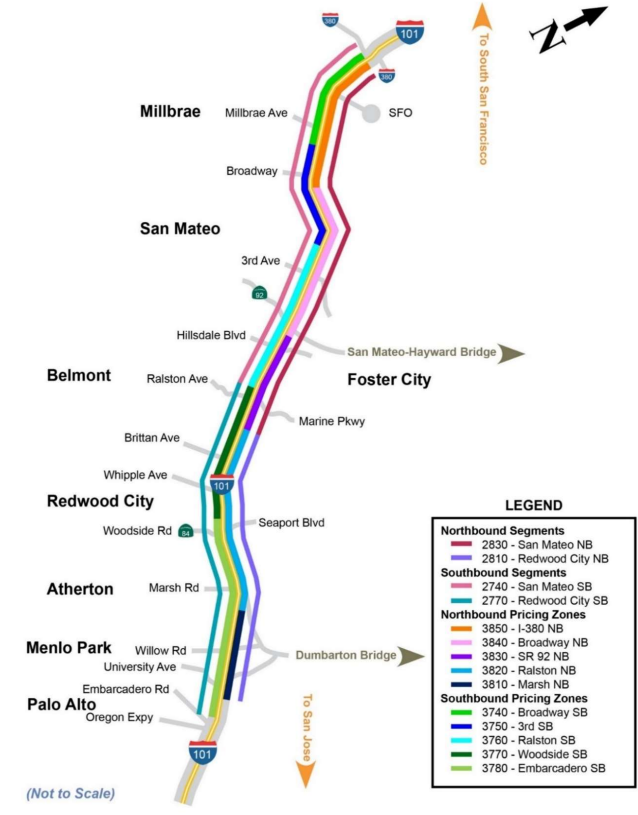
3760 - Ralston SB

3830 - SR 92 NB



Map of SM101 Corridor (Not To Scale)

SM101 Express Lanes Corridor Map



LEGEND

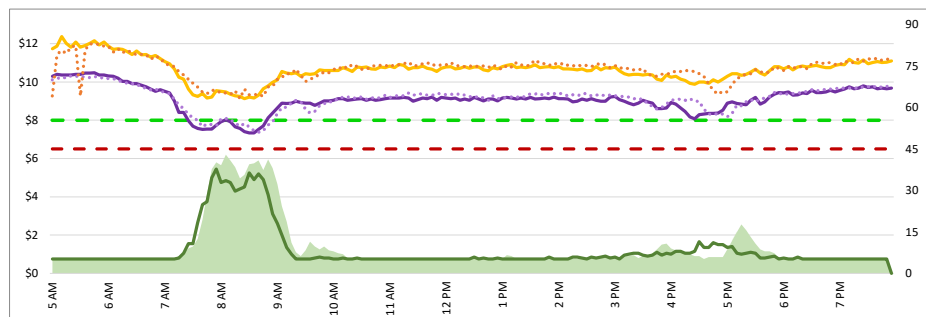
Northbound Segments	2830 - San Mateo NB
Southbound Segments	2740 - San Mateo SB
Northbound Pricing Zones	2770 - Redwood City SB
Southbound Pricing Zones	3740 - Broadway SB
	3750 - 3rd SB
	3760 - Ralston SB
	3770 - Woodside SB
	3780 - Embarcadero SB

Chart Legend

—	Current EL Volume (06/01)	—	Historic EL Volume (05/25)
—	Current GP Volume (06/01)	—	Historic GP Volume (05/25)
—	Current EL Speed (06/01)	—	Historic EL Speed (05/25)
—	Current GP Speed (06/01)	—	Historic GP Speed (05/25)
—	Current Toll (06/01)	—	Historic Toll (05/25)
—	Max Operational Toll	—	Targeted Min. LOS - 45mph

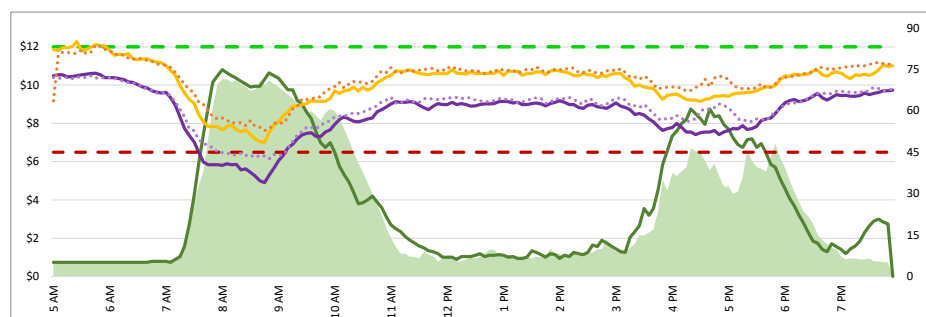
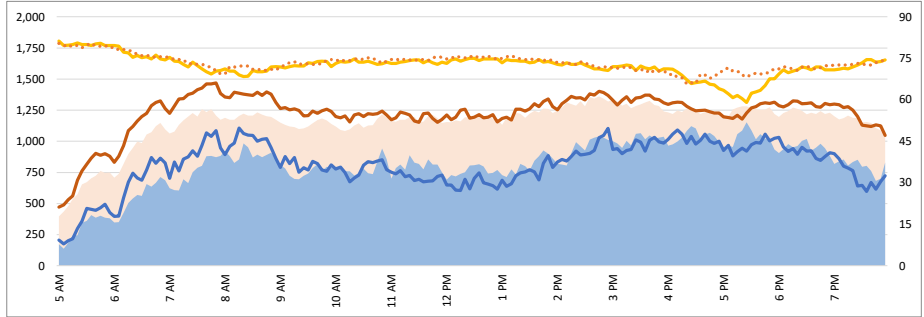
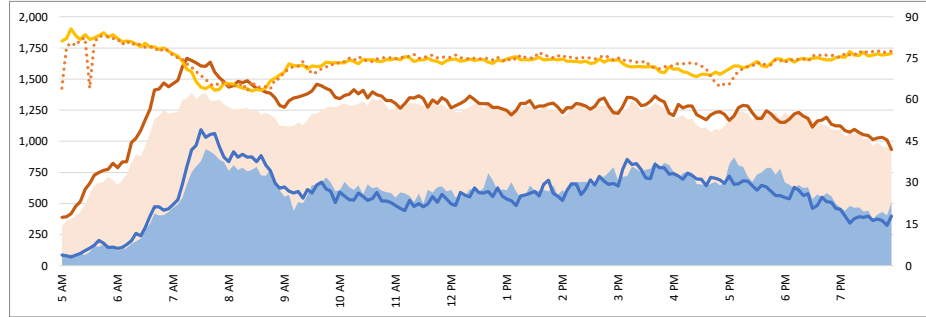
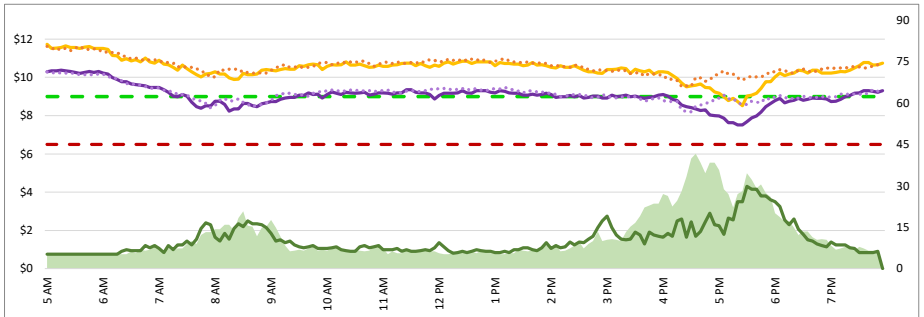
1. Lane Performance

Average Speeds, Volumes & Tolls - Current (Week of 6/1 - 6/5) vs Historic (Week of 5/25 - 5/29)



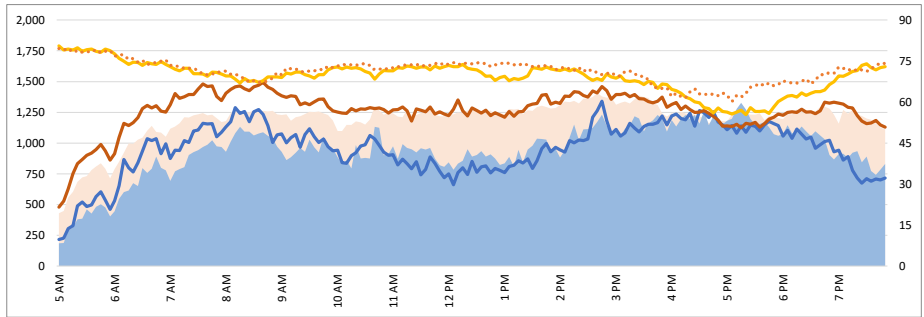
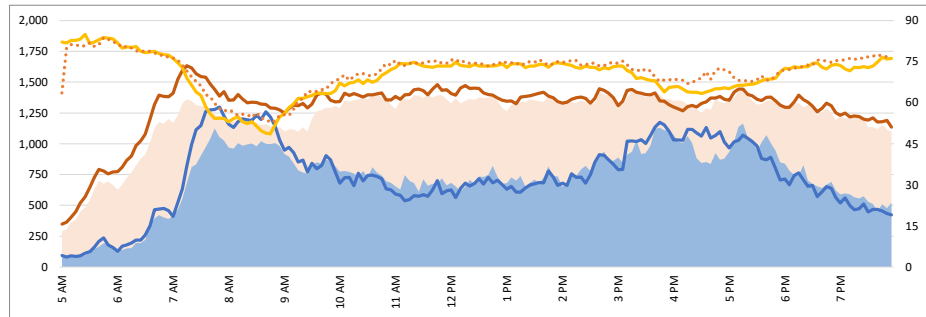
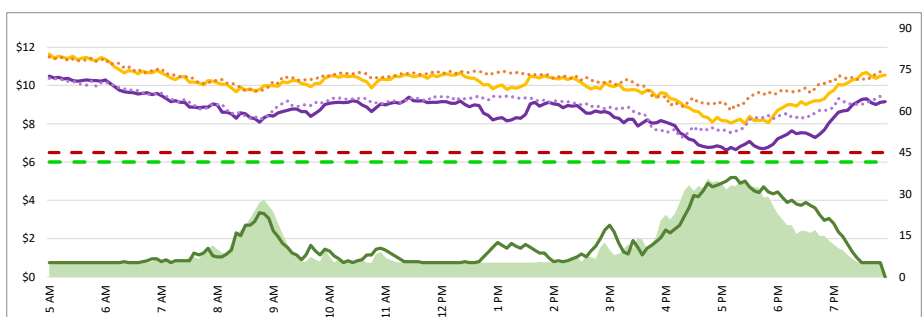
3770 - Woodside SB

3820 - Ralston NB



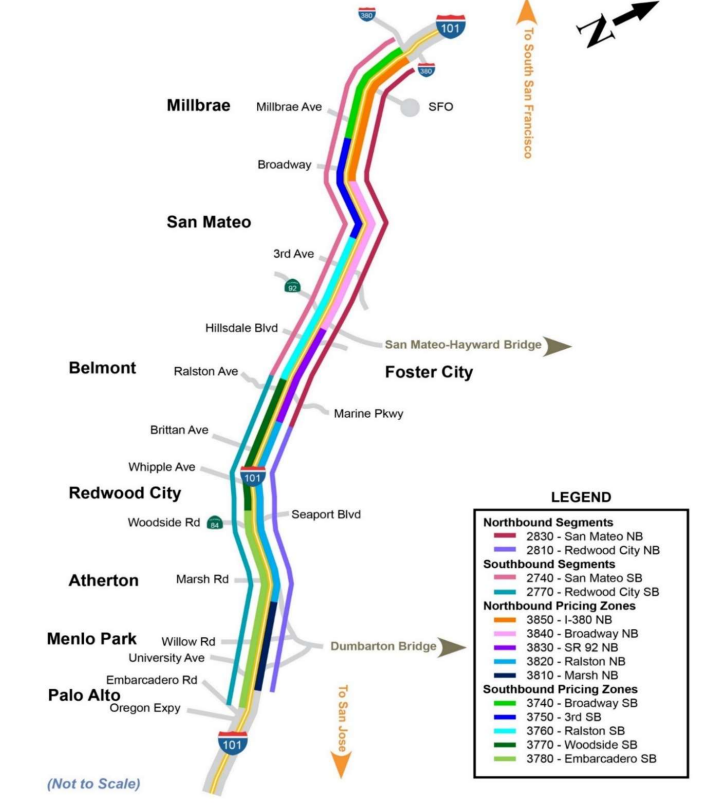
3780 - Embarcadero SB

3810 - Marsh NB



Map of SM101 Corridor (Not To Scale) DATA DATE: Week of 6/1 - 6/5

SM101 Express Lanes Corridor Map



LEGEND

- Northbound Segments**
 - 2830 - San Mateo NB
 - 2810 - Redwood City NB
- Southbound Segments**
 - 2740 - San Mateo SB
 - 2770 - Redwood City SB
- Northbound Pricing Zones**
 - 3850 - I-380 NB
 - 3840 - Broadway NB
 - 3830 - SR 92 NB
 - 3820 - Ralston NB
 - 3810 - Marsh NB
- Southbound Pricing Zones**
 - 3740 - Broadway SB
 - 3750 - 3rd SB
 - 3780 - Ralston SB
 - 3770 - Woodside SB
 - 3780 - Embarcadero SB

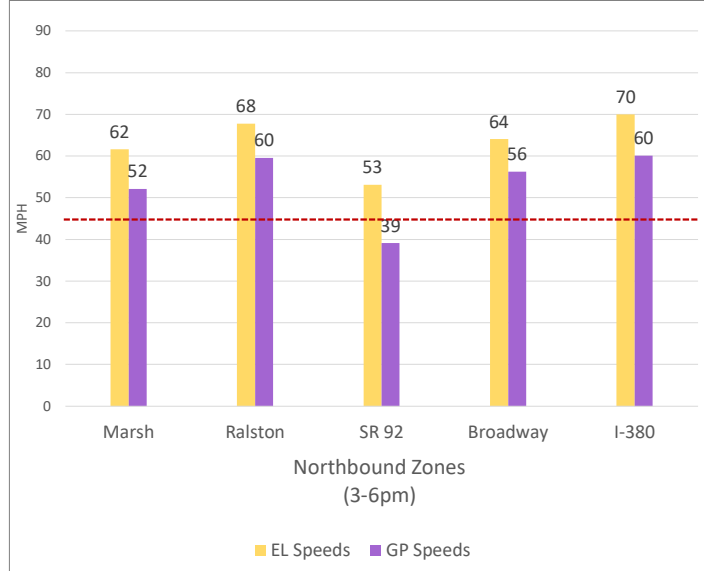
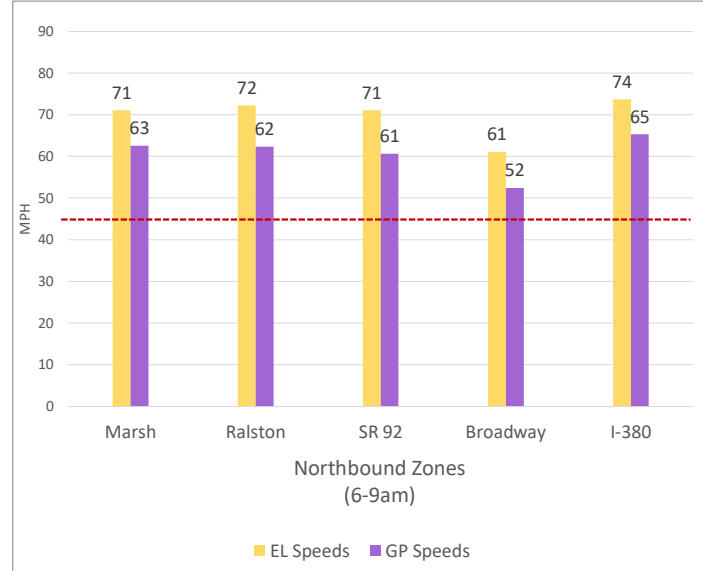
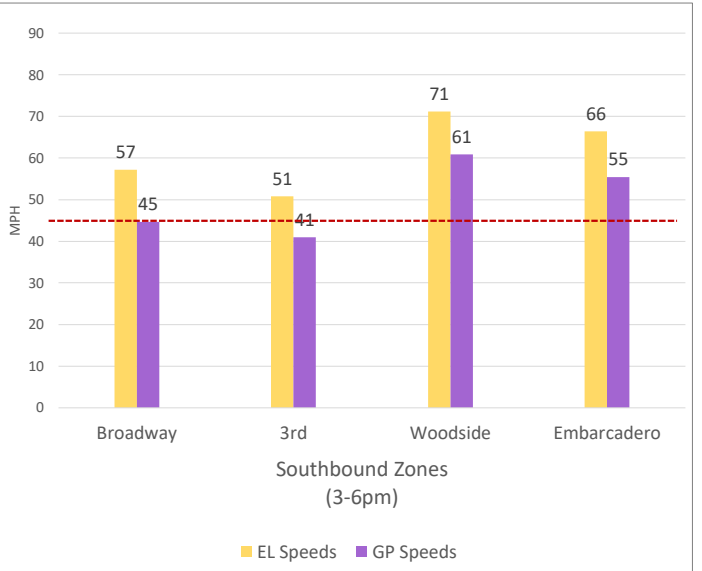
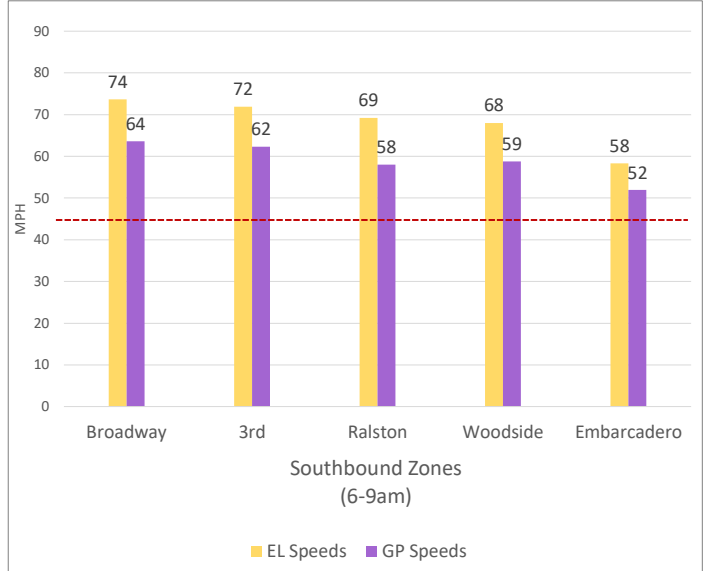
Chart Legend

- Current EL Volume (06/01)
- Current GP Volume (06/01)
- Current EL Speed (06/01)
- Current GP Speed (06/01)
- Current Toll (06/01)
- Max Operational Toll
- Historic EL Volume (05/25)
- Historic GP Volume (05/25)
- Historic EL Speed (05/25)
- Historic GP Speed (05/25)
- Historic Toll (05/25)
- Targeted Min. LOS - 45mph

2. Toll System Performance

DATA DATE: **Week of 6/1 - 6/5**

Speed Differential - Directional Peak Periods



--- Targeted Min. LOS - 45mph